

16. Nkhata Lakeshore Catchment

Key

- Town/City
- Fault
- Waterbody
- River
- Catchment Boundary
- Malawi Border

Geogenic Groundwater Fluoride Zones

- ★ EXCESSIVE FLUORIDE - Hot Spring (100% likelihood of fluoride exceeding *1.5 mg/l & 75% likelihood of fluoride exceeding **4 mg/l)
- ELEVATED GEOGENIC FLUORIDE (>60% likelihood of fluoride exceeding *1.5 mg/l & 0% likelihood of fluoride exceeding **4 mg/l)
- MODERATE-LOW GEOGENIC FLUORIDE (10- 17% likelihood of fluoride exceeding *1.5 mg/l & 0% likelihood of fluoride exceeding **4 mg/l)
- LOW GEOGENIC FLUORIDE (<10% likelihood of fluoride exceeding *1.5 mg/l & 0% likelihood of fluoride exceeding **4 mg/l)
- Insufficient Mineralogical or Water Quality Data to Determine Geogenic Fluoride Risk

*WHO standard limit for fluoride in drinking water

**Malawian proposed interim standard for fluoride in drinking water

Summary Statistics

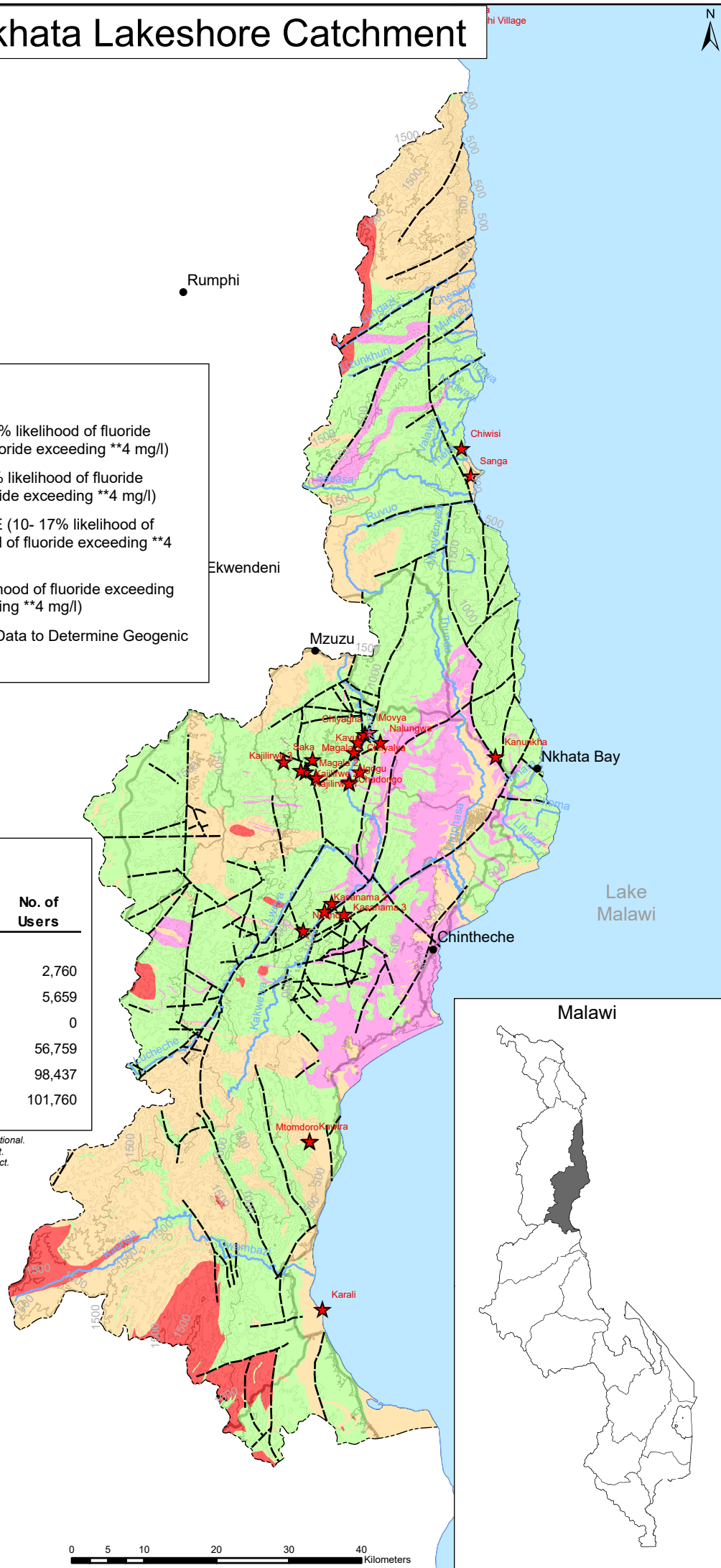
Geogenic Groundwater Fluoride Zones	No. of Water Points		No. of Users
	n	%	
*Excessive (Hot Springs)	24	1.35	2,760
*Elevated	48	2.7	5,659
Moderate-high	0	0	0
Moderate-low	454	25.5	56,759
Low	740	41.55	98,437
Insufficient Data	515	28.92	101,760

ALL water points are direct groundwater sources and are either functional or partly functional.

No. of users calculation is based on the number of users per each individual water point.

No. of users for hot springs based on average number of users per water point for district.

* Requires priority review and replacement water supply



Malawi

Zambia

0 5 10 20 30 40 Kilometers