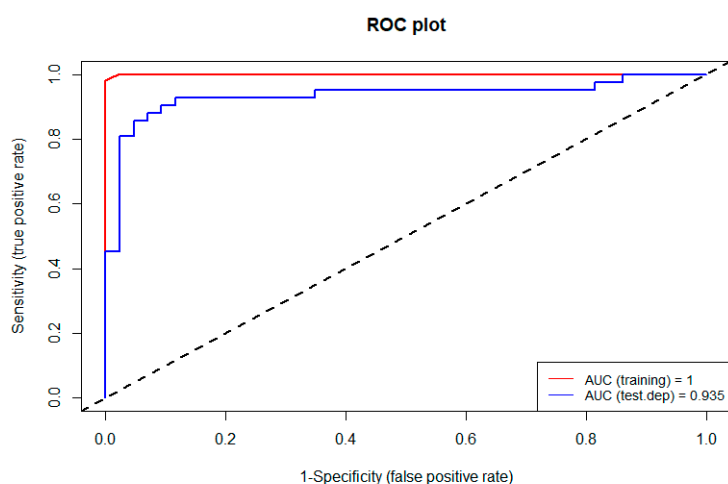


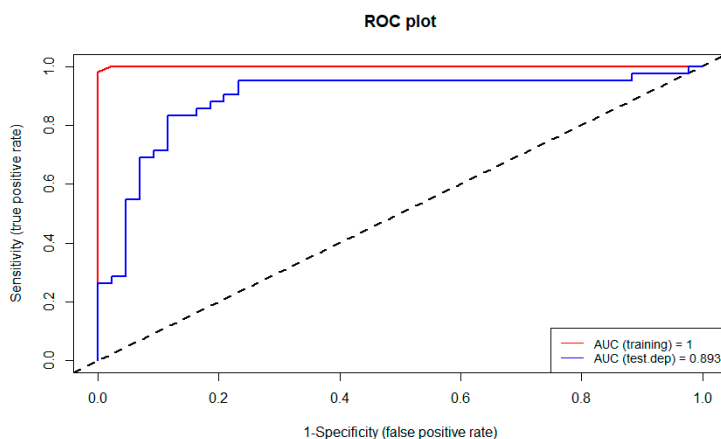
# A Modeling Comparison of Groundwater Potential Mapping in a Mountain Bedrock Aquifer: QUEST, GARP, and RF Models

Davoud Davoudi Moghaddam <sup>1</sup>, Omid Rahmati <sup>2</sup>, Ali Haghizadeh <sup>1</sup> and Zahra Kalantari <sup>3,\*</sup>

ROC Curves of Training and Validation Steps for the Different Models and Sampling Datasets (S1-S3).



**Figure S1.** ROC curves of the training and validation steps for the RF model using dataset S1.



**Figure S2.** ROC curves of the training and validation steps for the RF model using dataset S2.

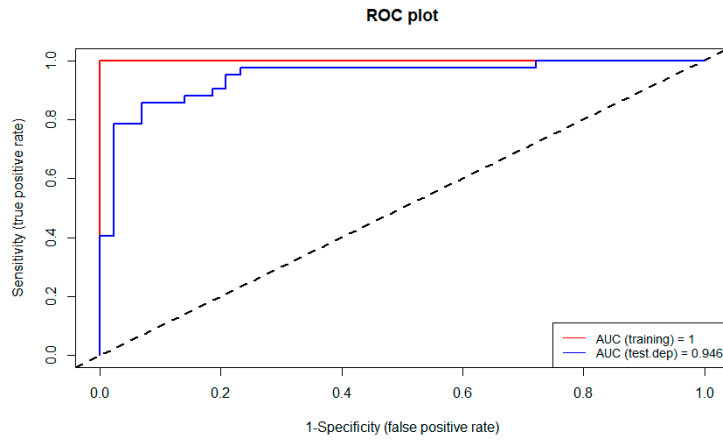


Figure S3. ROC curves of the training and validation steps for the RF model using dataset S3.

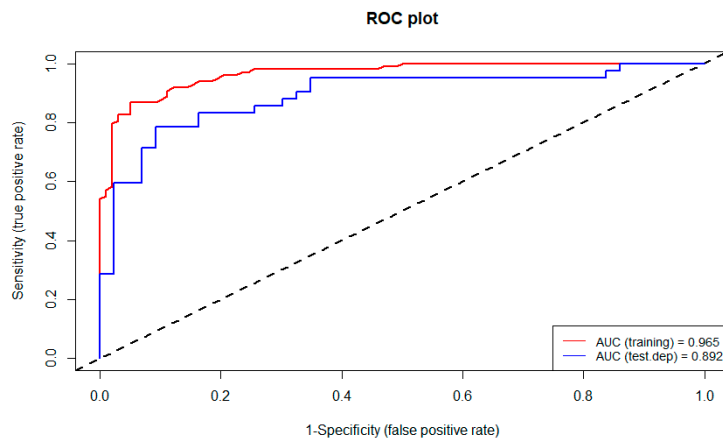


Figure S4. ROC curves of the training and validation steps for the GARP model using dataset S1.

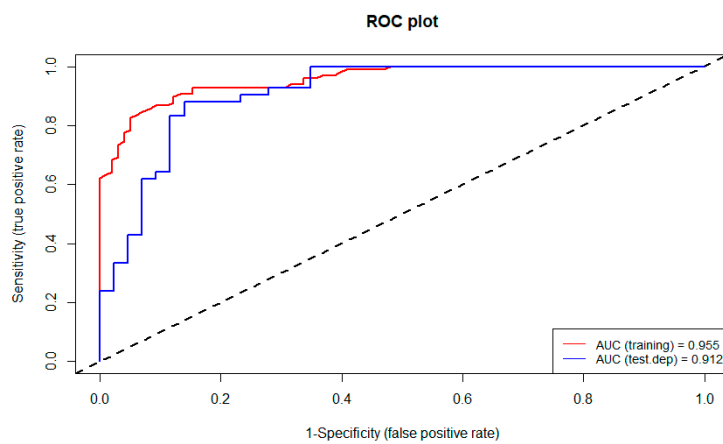


Figure S5. ROC curves of the training and validation steps for the GARP model using dataset S2.

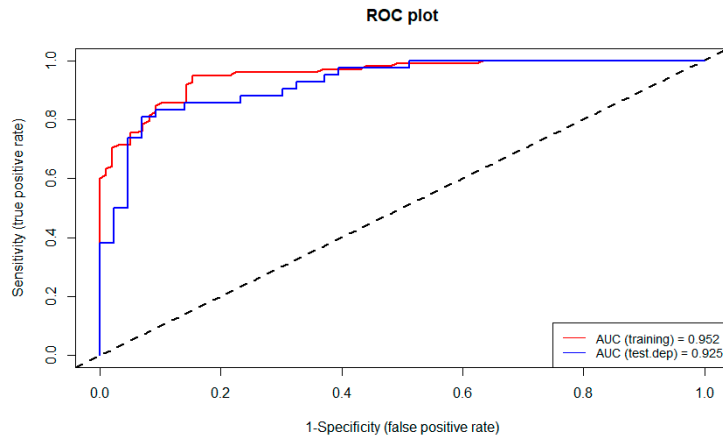


Figure S6. ROC curves of the training and validation steps for the GARP model using dataset S3.

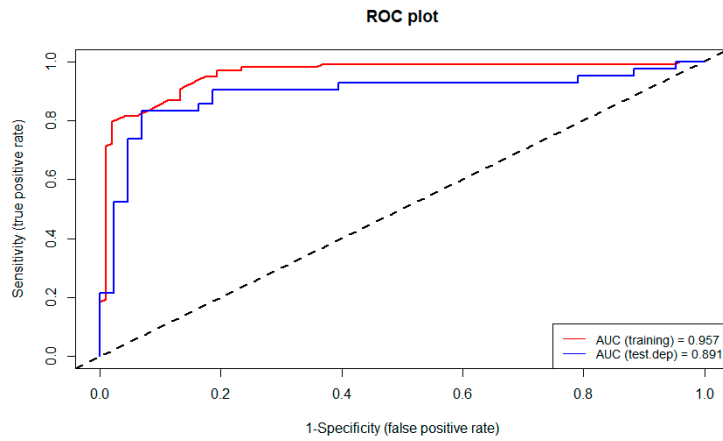


Figure S7. ROC curves of the training and validation steps for the QUEST model using dataset S1.

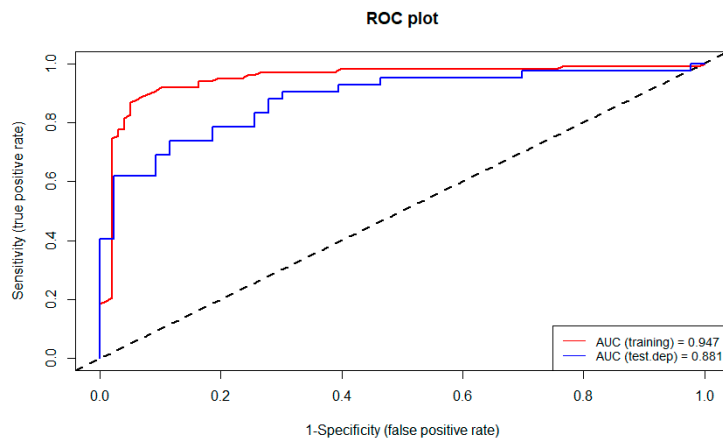


Figure S8. ROC curves of the training and validation steps for the QUEST model using dataset S2.

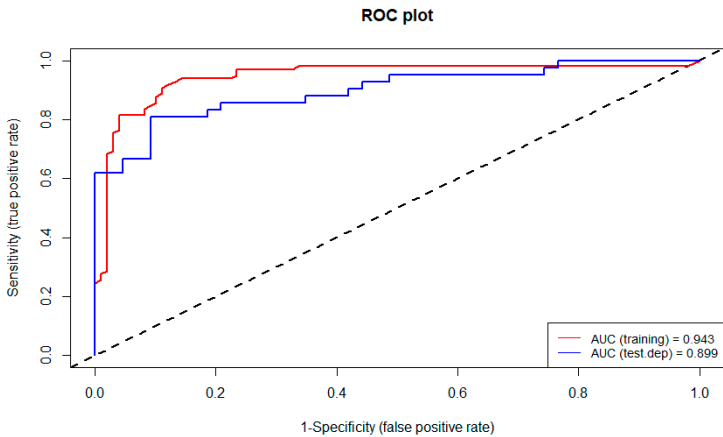


Figure S9. ROC curves of the training and validation steps for the QUEST model using dataset S3.