

Supplementary Material for

**A Probabilistic Approach for Characterization of Sub-Annual Socioeconomic  
Drought Intensity-Duration-Frequency (IDF) Relationships in a Changing  
Environment**

Hadi Heidari <sup>1,\*</sup>, Mazdak Arabi <sup>1</sup>, Mahshid Ghanbari <sup>1</sup>, and Travis Warziniack <sup>2</sup>

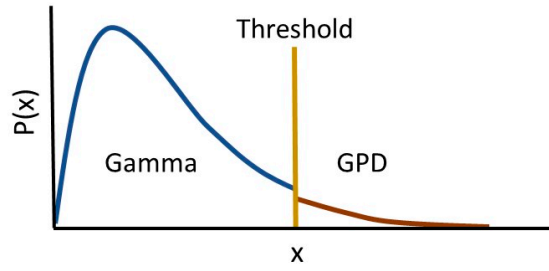
<sup>1</sup> Department of Civil and Environmental Engineering, Colorado State University, 1372

Campus Delivery, Fort Collins, CO 80523-1372, United States

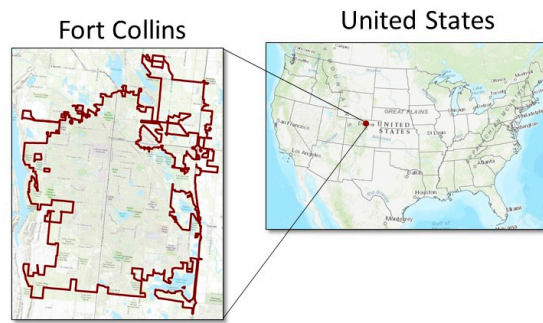
<sup>2</sup> Rocky Mountain Research Station, U. S. Forest Service, Fort Collins, CO 80526,

United States

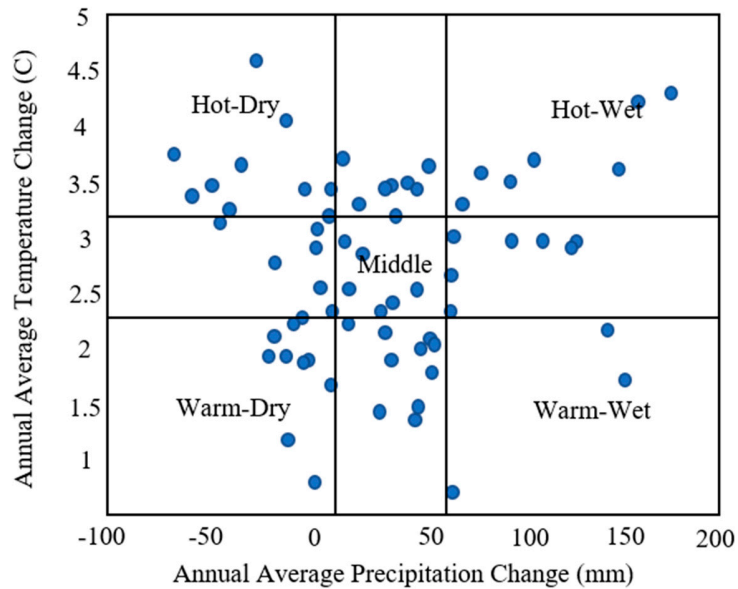
Corresponding author: Hadi Heidari (Hadi.Heidari@colostate.edu)



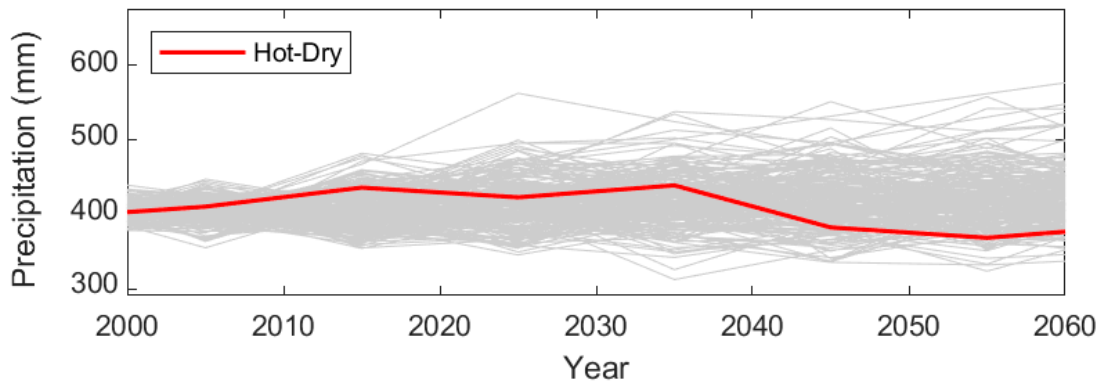
**Figure 1.** Schematic of Gamma-GPD mixture model.



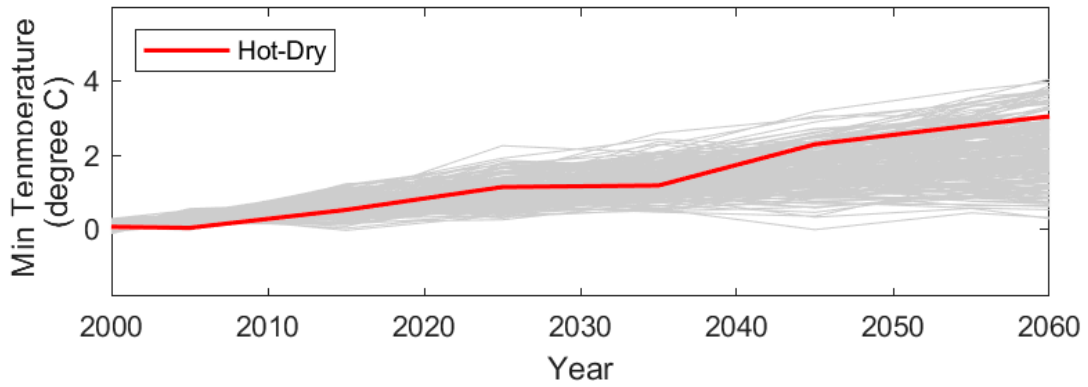
**Figure S2.** City of Fort Collins, Colorado, USA.



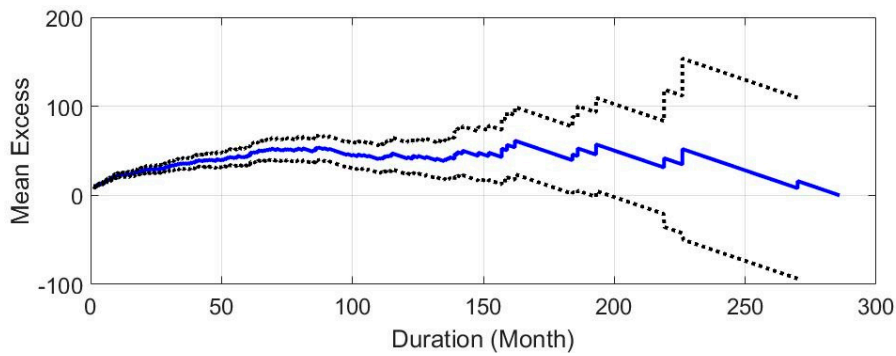
**Figure S3.** Classification of downscaled climate scenarios into hot-dry, hot-wet, warm-dry, warm-wet, and median categories based on the difference in current and future temperature and precipitation.



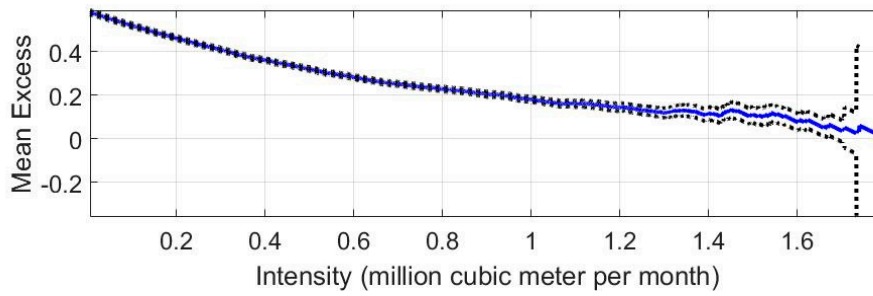
**Figure S4.** 30-year normal annual precipitation from the current conditions to the future



**Figure S5.** 30-year normal annual minimum temperature from the current conditions to the future



**Figure S6.** Mean residual life plot of drought durations



**Figure S7.** Mean residual life plot of drought intensities

**Table S1.** Boundaries of mixture model parameters

Parameter	Minimum	Maximum
GPD Shape	-0.3	0.3
GPD Scale	0.1	0.3
GPD Location	1.0	1.3
Gamma Shape	1.0	2.0
Gamma Scale	0.2	0.3

**Table S2.** First order sensitivity indices of mixture model parameters

Intensity	GPD			Gamma		Sum
	Shape	Scale	Location	Shape	Scale	
0.01	0.000	0.000	0.000	0.978	0.018	0.997
0.50	0.000	0.000	0.005	0.735	0.247	0.987
1.00	0.000	0.000	0.514	0.266	0.171	0.685
1.30	0.026	0.170	0.219	0.000	0.000	0.415

**Table S3.** Total order sensitivity indices of mixture model parameters

<b>Intensity</b>	<b>GPD</b>			<b>Gamma</b>		<b>Sum</b>
	<b>Shape</b>	<b>Scale</b>	<b>Location</b>	<b>Shape</b>	<b>Scale</b>	
0.01	0.000	0.000	0.000	0.991	0.031	1.022
0.50	0.000	0.000	0.005	0.759	0.271	1.035
1.00	0.000	0.000	0.568	0.300	0.195	1.063
1.30	0.454	0.720	0.792	0.000	0.000	1.966