

Supplementary Material

Real-time behavior of a microalgae-bacteria consortium treating wastewater in Sequencing Batch Reactor in response to feeding time and agitation mode

Emna Mhedhbi ^{1,*}, Nadia Khelifi ^{1,2}, Paola Foladori ³ and Issam Smaali ¹

¹ LIP-MB Laboratory (LR11ES24), Department of Biological and Chemical Engineering -National Institute of Applied Sciences and Technology, University of Carthage, BP 676 Tunis cedex, Tunisia; khelifi.nad@gmail.com (N.K.); Issam.smaali@insat.rnu.tn (I.S.)

² Higher Institute of Fisheries and Aquaculture of Bizerte, University of Carthage, BP 15 Errimel 7080, Bizerte, Tunisia

³ Department of Civil Environmental and Mechanical Engineering, University of Trento, Trento, 38122 Trento TN, Italy; paola.foladori@unitn.it.

* Correspondence: emna.baka@gmail.com; Tel: +216-71-703-627; Fax: +216-71-704-329

Supplementary Material

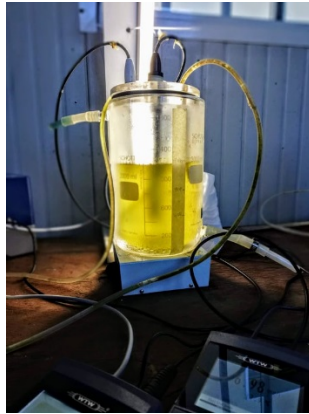


Figure S1. Photobioreactor (PBR) used for lab-scale microalgae-bacteria consortium culturing.

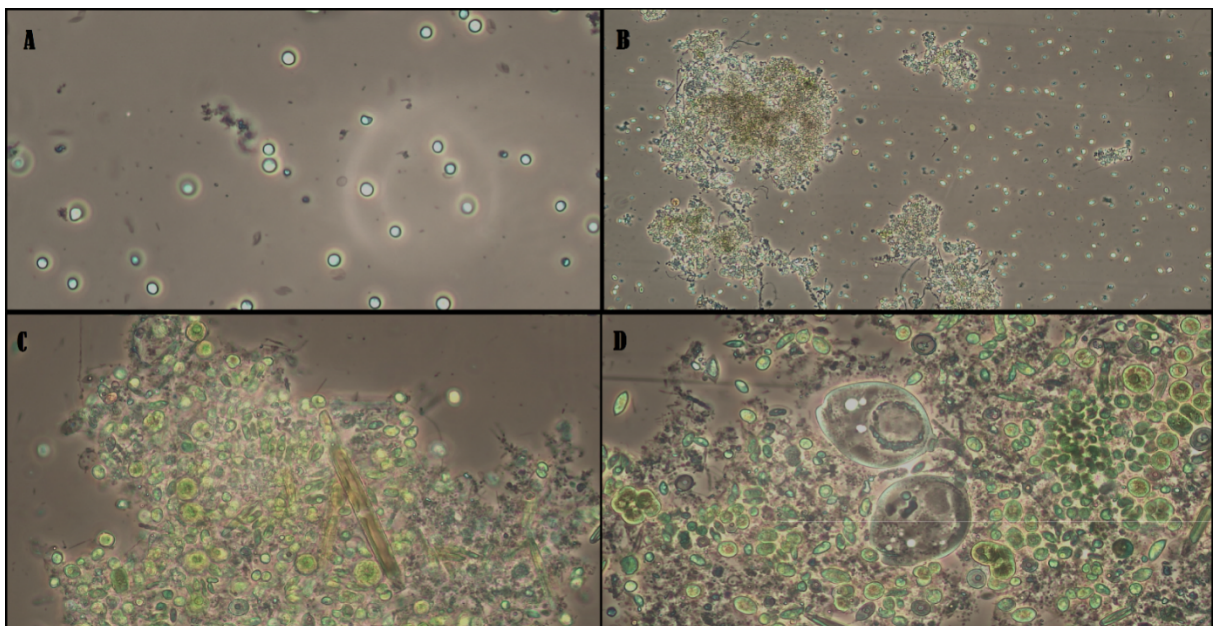


Figure 2. Microscopic observation of the consortium development.

- (A) Inoculum picture showing only *Nannochloropsis gaditana* (500 x).
- (B) Consortium resulted after 1 month of experimenting at 8 days HRT (125 x).
- (C) Consortium aged of 2 months resulted from the 8 and 6 d HRT (400 x).
- (D) The final consortium after 4 months of experimentations where different strains of microalgae, bacteria (protozoa...) have been developed (400 x).