

Figure S1. Comparison between training series (a and c) and testing series (b and d) for water quality index (WQI) and residual sodium bicarbonate (RSBC) using the developed ANFIS model.

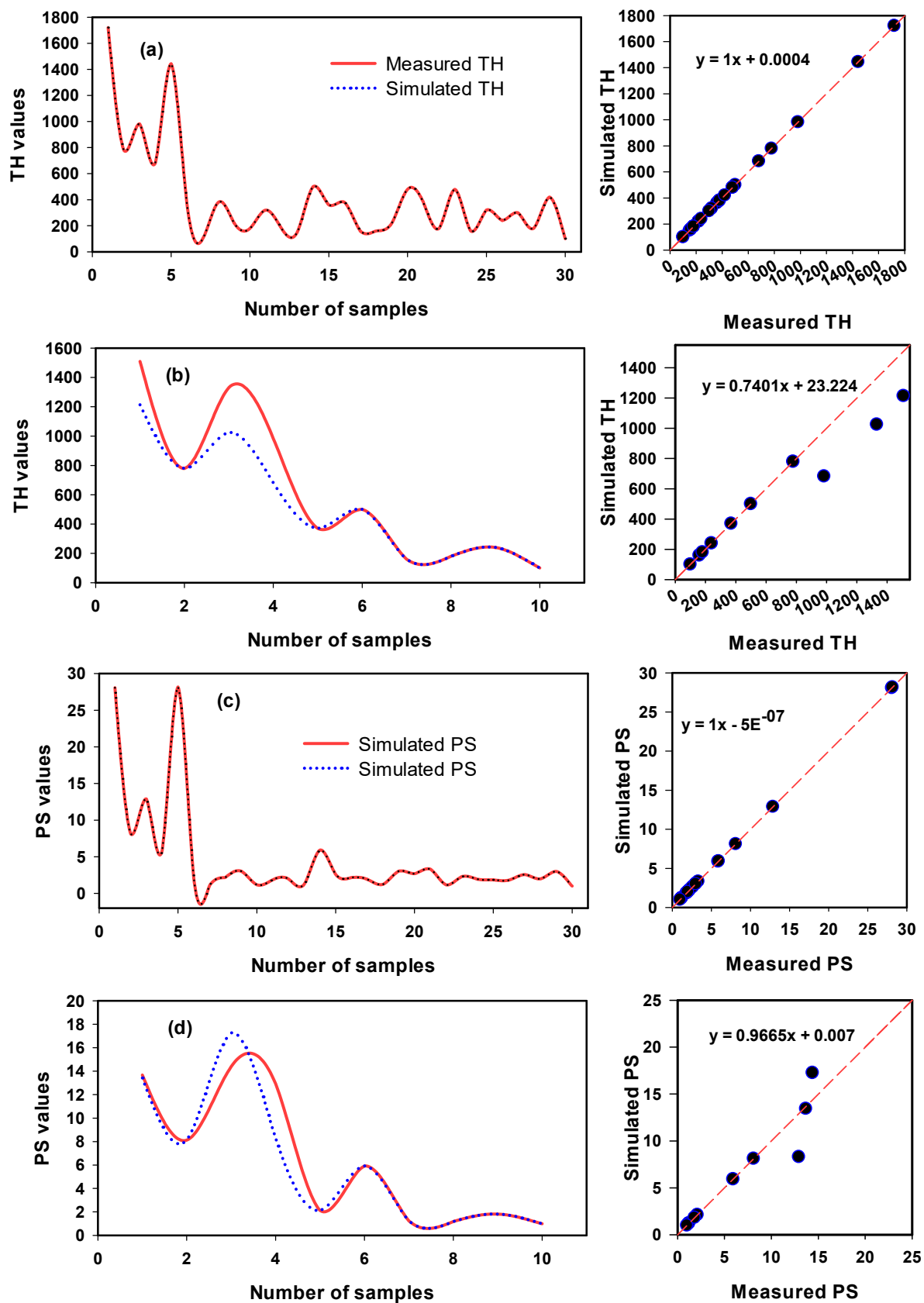


Figure S2. Comparison between training series (a and c) and testing series (b and d) for total hardness (TH) and potential salinity (PS) using the developed ANFIS model.

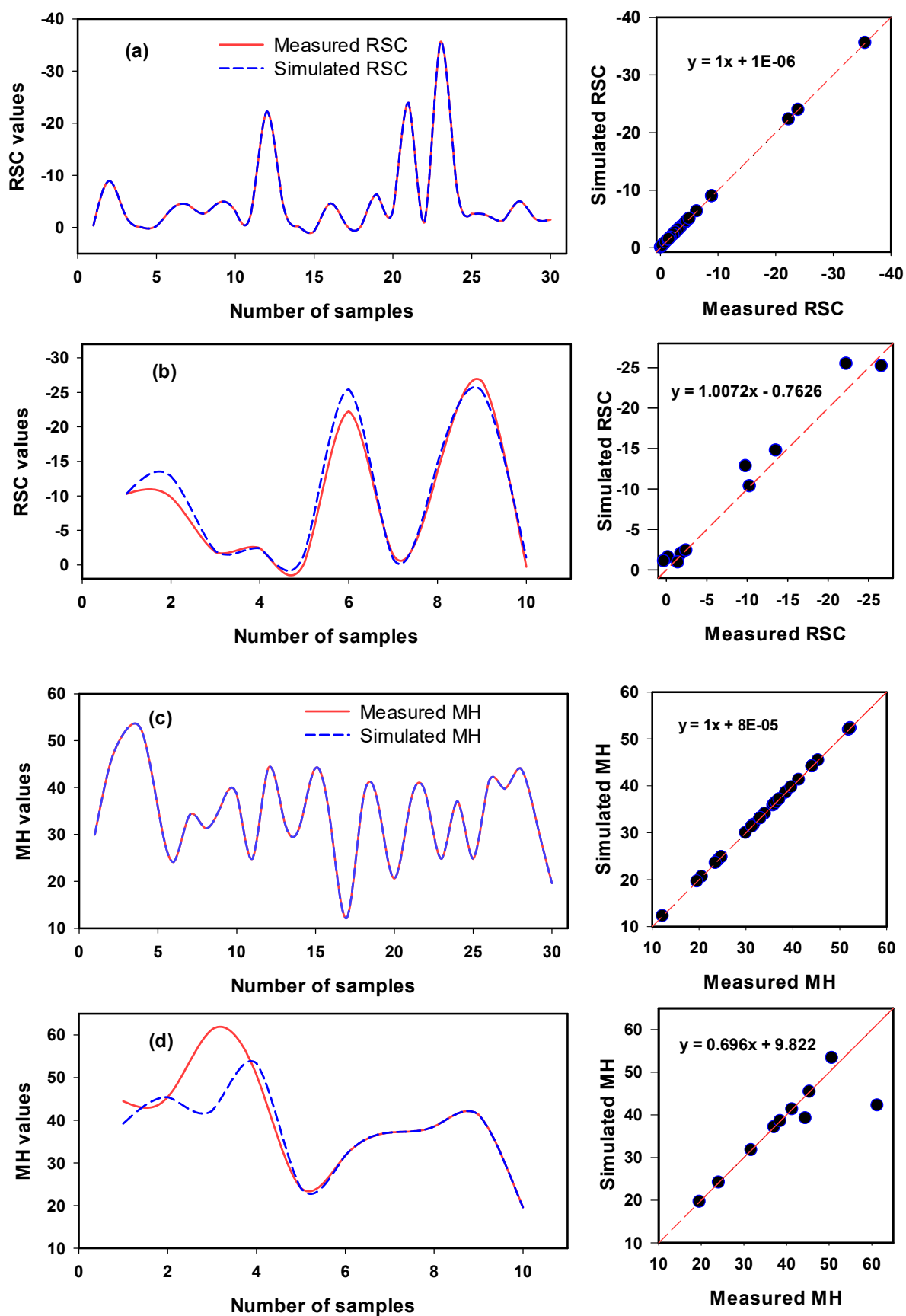


Figure S3. Comparison between training series (a and c) and testing series (b and d) for residual sodium carbonate (RSC) and magnesium hazard (MH) using the developed ANFIS model.

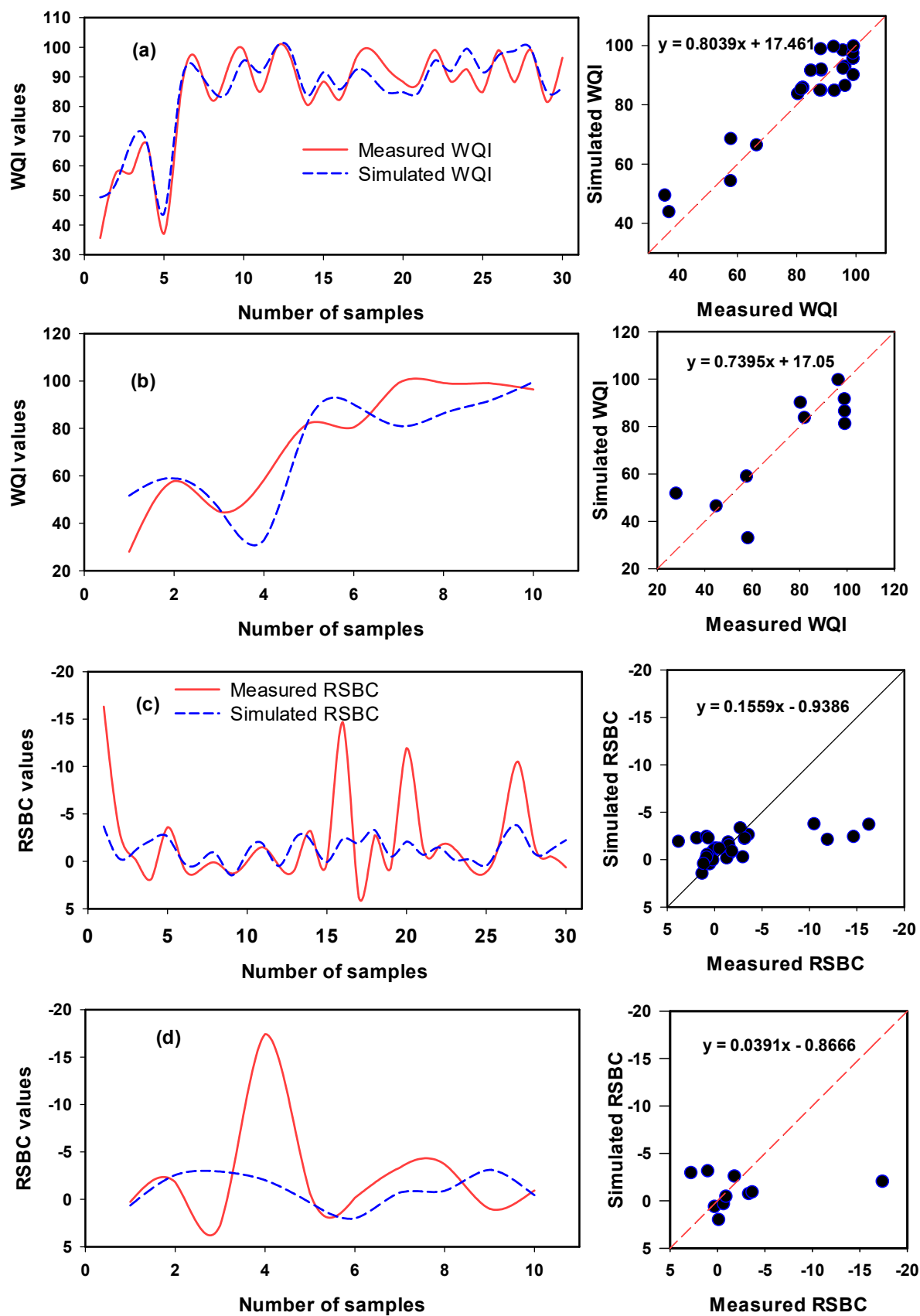


Figure S4. Comparison between training series (a and c) and testing series (b and d) for water quality index (WQI) and residual sodium bicarbonate (RSBC) using the developed SVMR model.

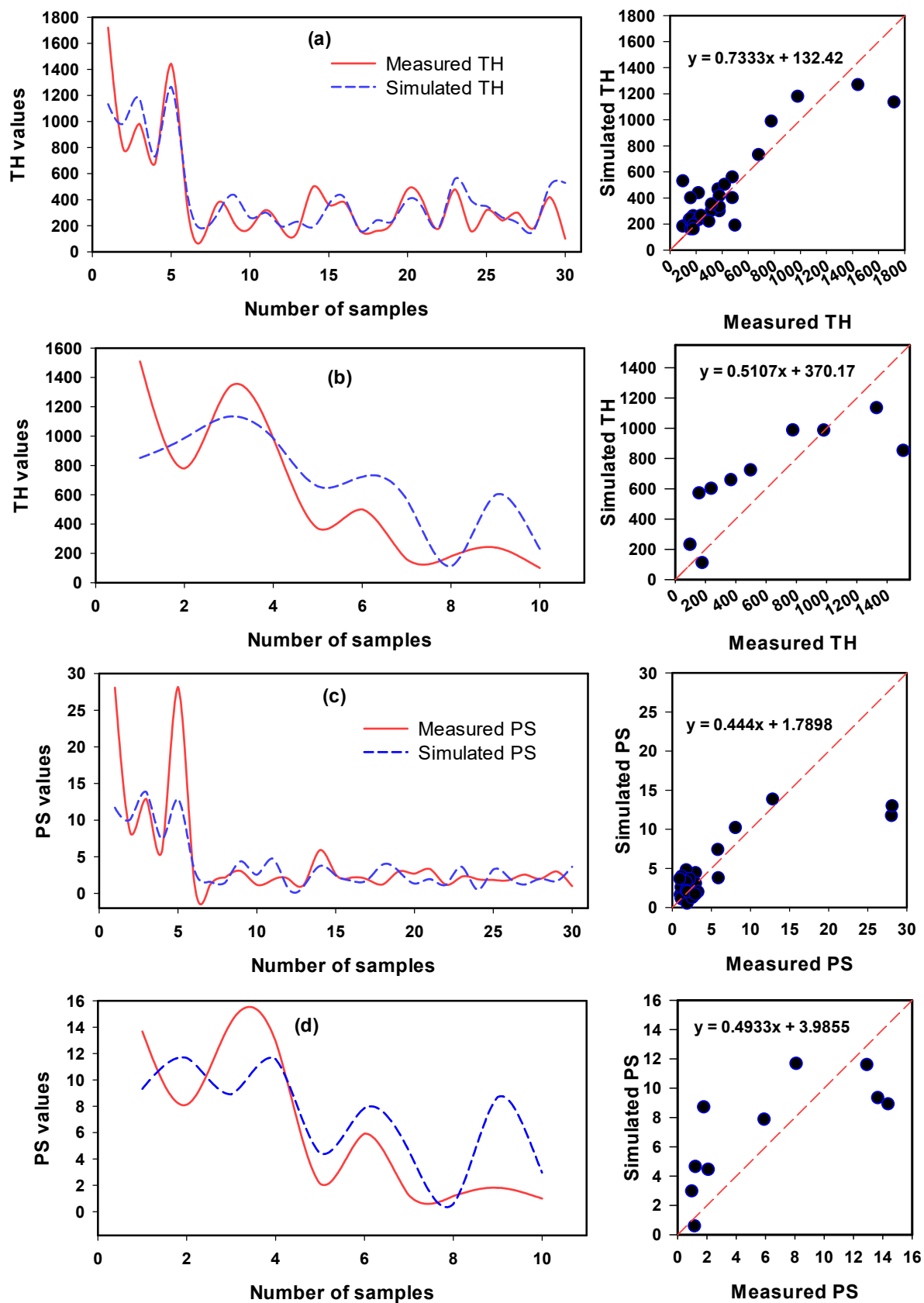


Figure S5. Comparison between training series (a and c) and testing series (b and d) for total hardness (TH) and potential salinity (PS) using the developed SVMR model.

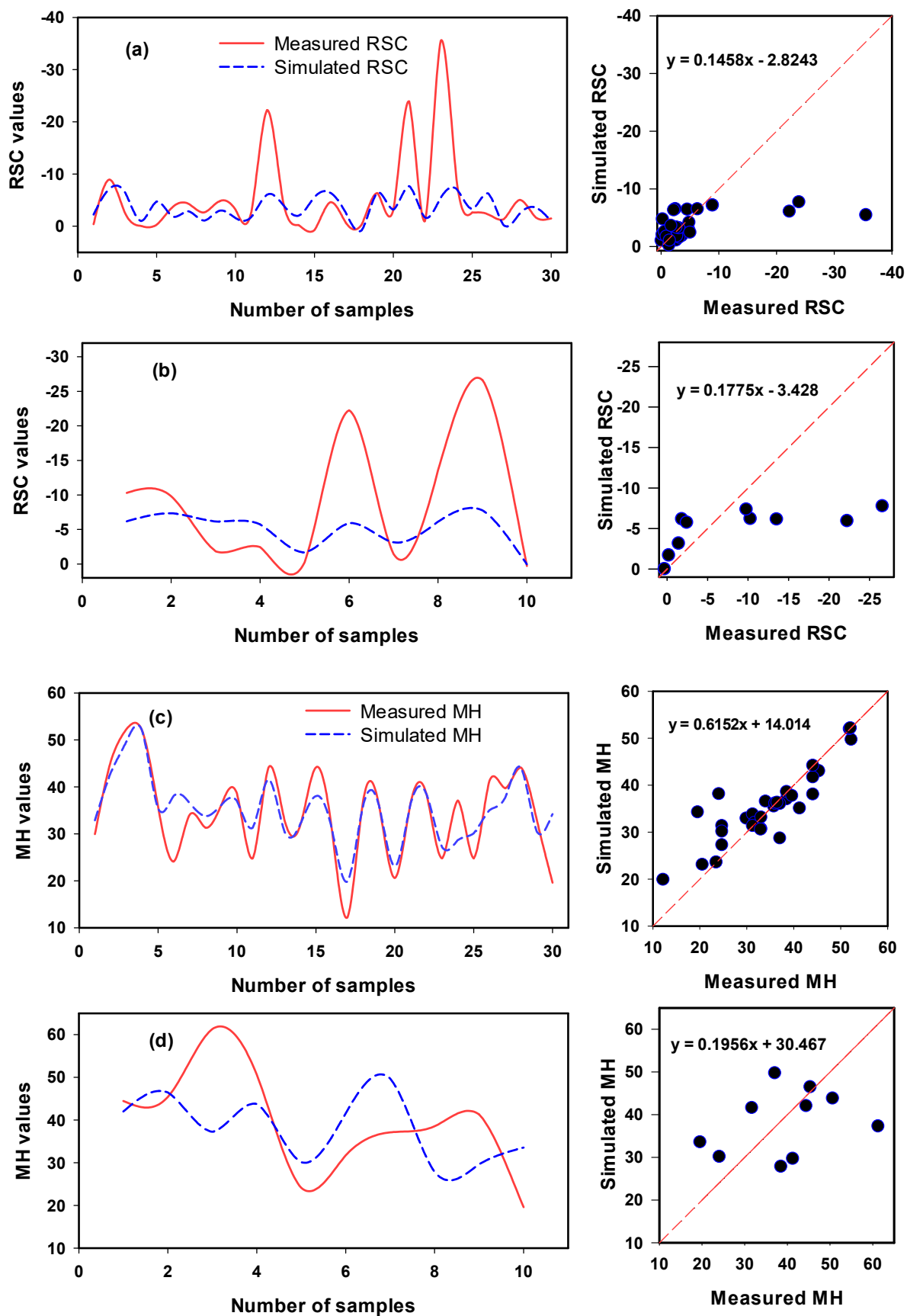


Figure S6. Comparison between training series (a and c) and testing series (b and d) for residual sodium carbonate (RSC) and magnesium hazard (MH) using the developed SVMR model. .