

Supplementary material

Impacts of Rainfall and Temperature Changes on Smallholder Agriculture in the Limpopo Province, South Africa

Sydney Shikwambana *, Ntokozo Malaza and Karabo Shale

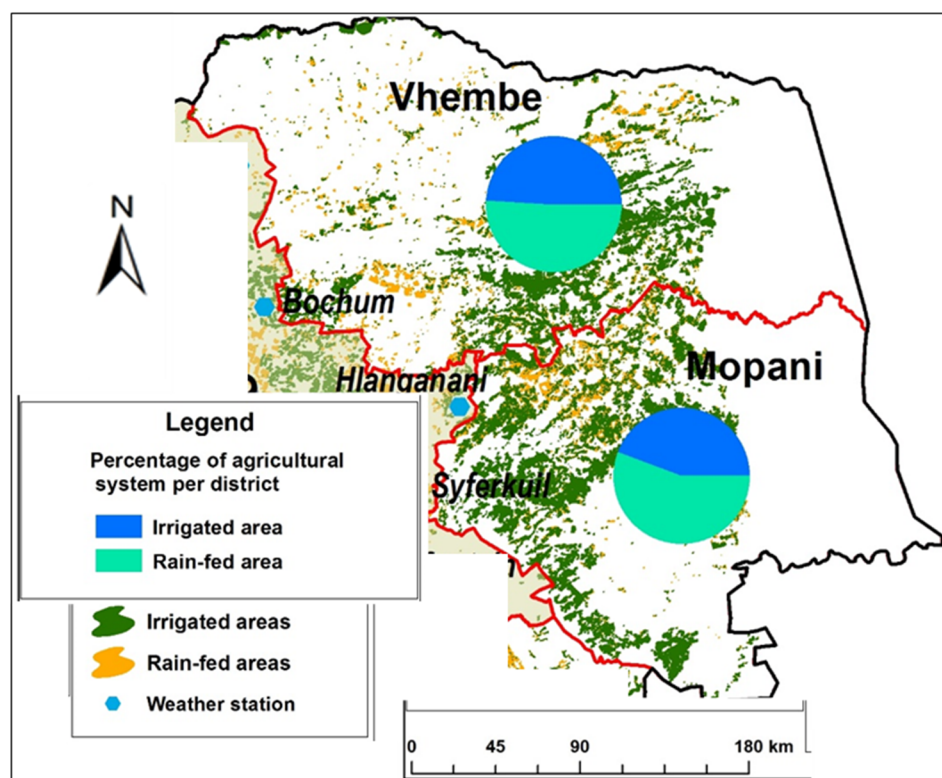


Figure S1. Irrigated and rainfed areas of Mopani and Vhembe districts indicating the proportions of the two agriculture sub-systems.

Table S1. Results of repeated measures ANOVA for rainfall, minimum and maximum temperatures as well as CMI of Mopani and Vhembe districts.

Repeated Measures Analysis of Variance for Rainfall					
Effect	SS	Degr. of Freedom	MS	F	p
Intercept	472897652	1	472897652	90.66	<0.0001
Error	78241399	15	5216093		
YEARS	41955379	57	736059	12.84	<0.0001
Error	49011699	855	57324		
Repeated Measures Analysis of Variance for minimum temperature for minimum Temperature					
Effect	SS	Degr. of Freedom	MS	F	p
Intercept	206214.9	1	206214.9	1536.54	<0.0001
Error	2013.1	15	134.2		
YEARS	180.3	57	3.2	3.55	<0.0001

Repeated Measures Analysis of Variance for Rainfall					
Effect	SS	Degr. of Freedom	MS	F	p
Error	762.3	855	0.9		
Repeated Measures Analysis of Variance for maximum temperature					
Effect	SS	Degr. of Freedom	MS	F	p
Intercept	719347.9	1	719347.9	7964.56	<0.0001
Error	1354.8	15	90.3		
YEARS	644.2	57	11.3	14.17	<0.0001
Error	682.0	855	0.8		
Repeated Measures Analysis of Variance for CMI					
Effect	SS	Degr. of Freedom	MS	F	p
Intercept	340.62	1	340.62	149.38	<0.0001
Error	34.20	15	2.28		
YEARS	19.32	57	0.34	9.37	<0.0001
Error	30.92	855	0.04		