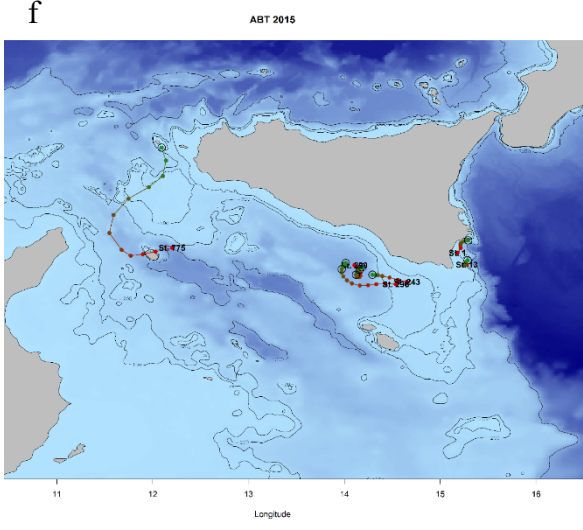
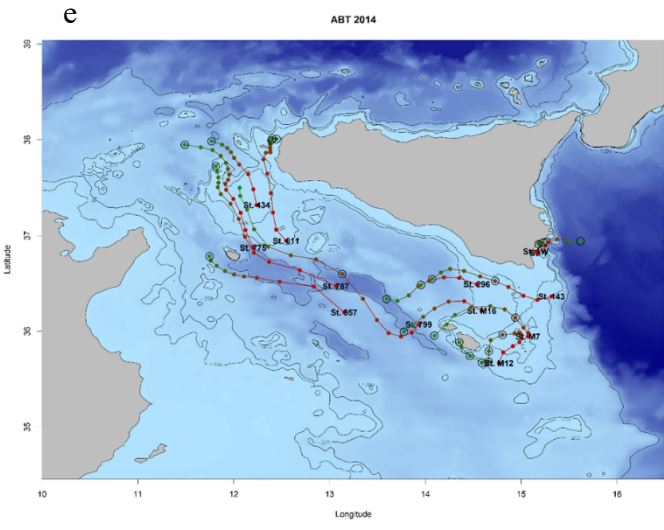
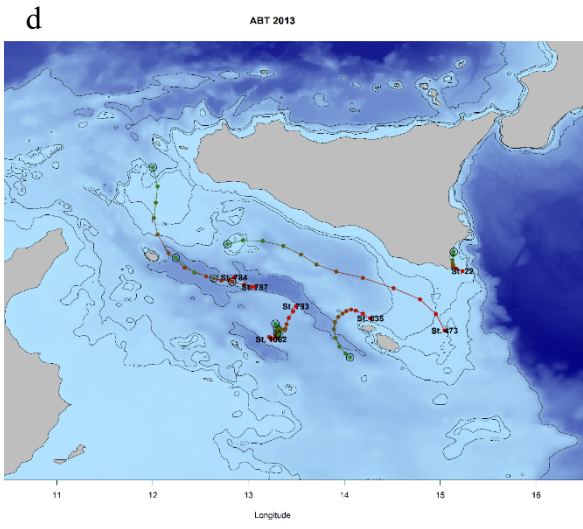
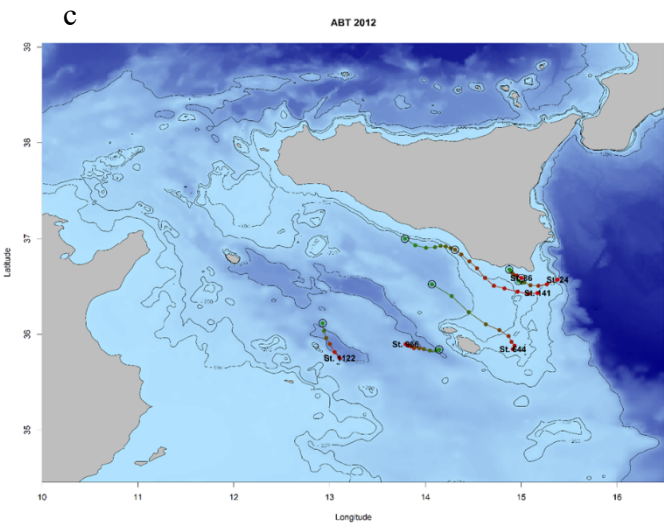
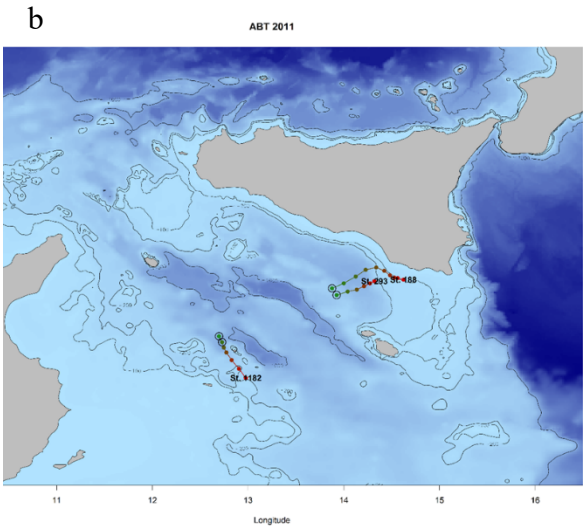
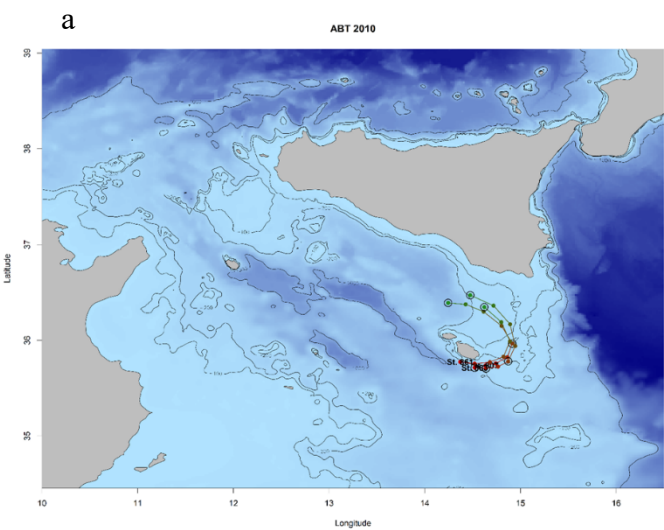


Supplementary Materials:



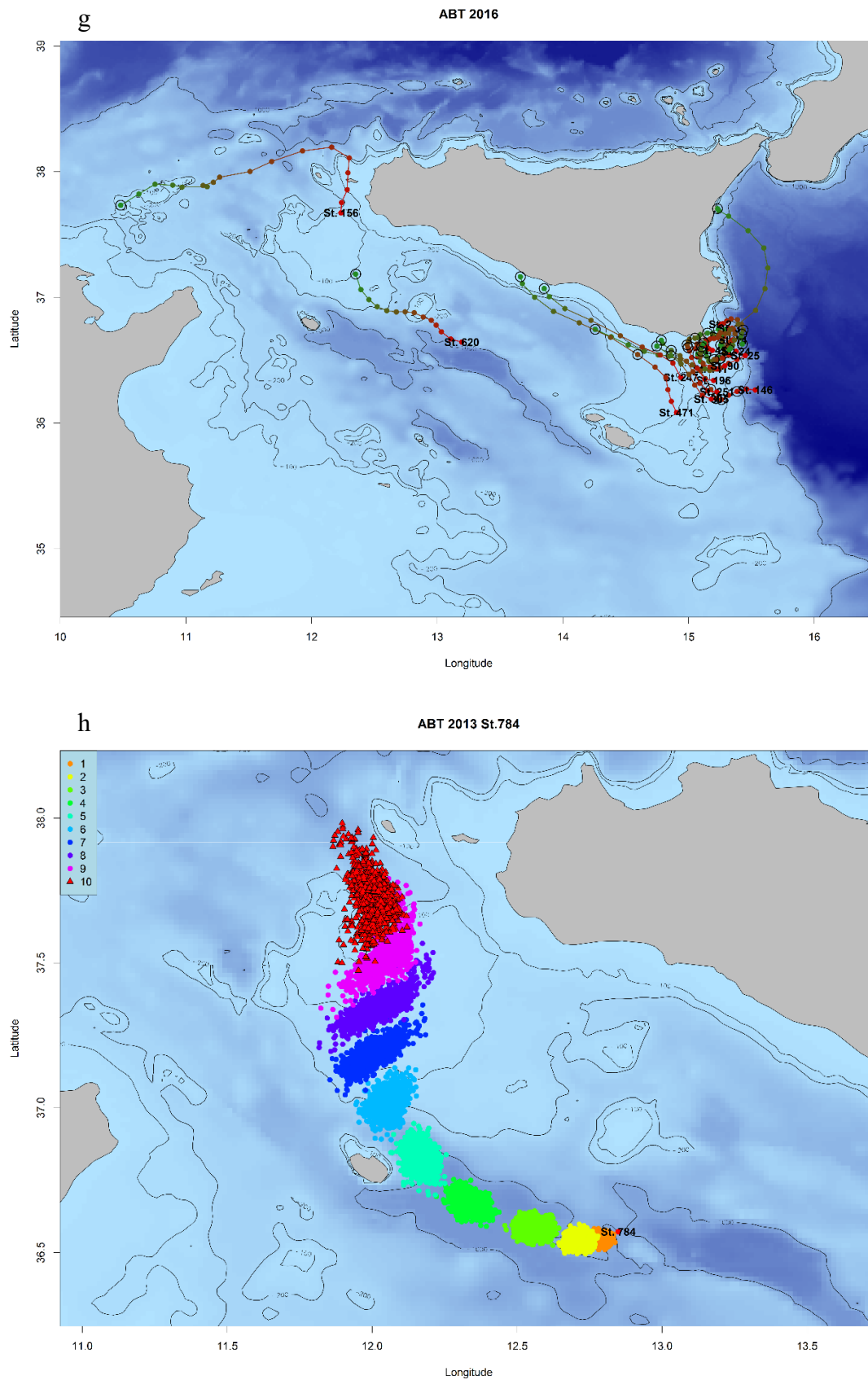


Figure S1. (a-g) Backward trajectories of some longer-lived ABT larvae, by yearly survey. The red points correspond to the sampling stations, the green circles represent the hatching sites as estimated by Lagrangian backwards simulation runs. (h) An example of the calculated daily probability clouds for a 10-day old larva.

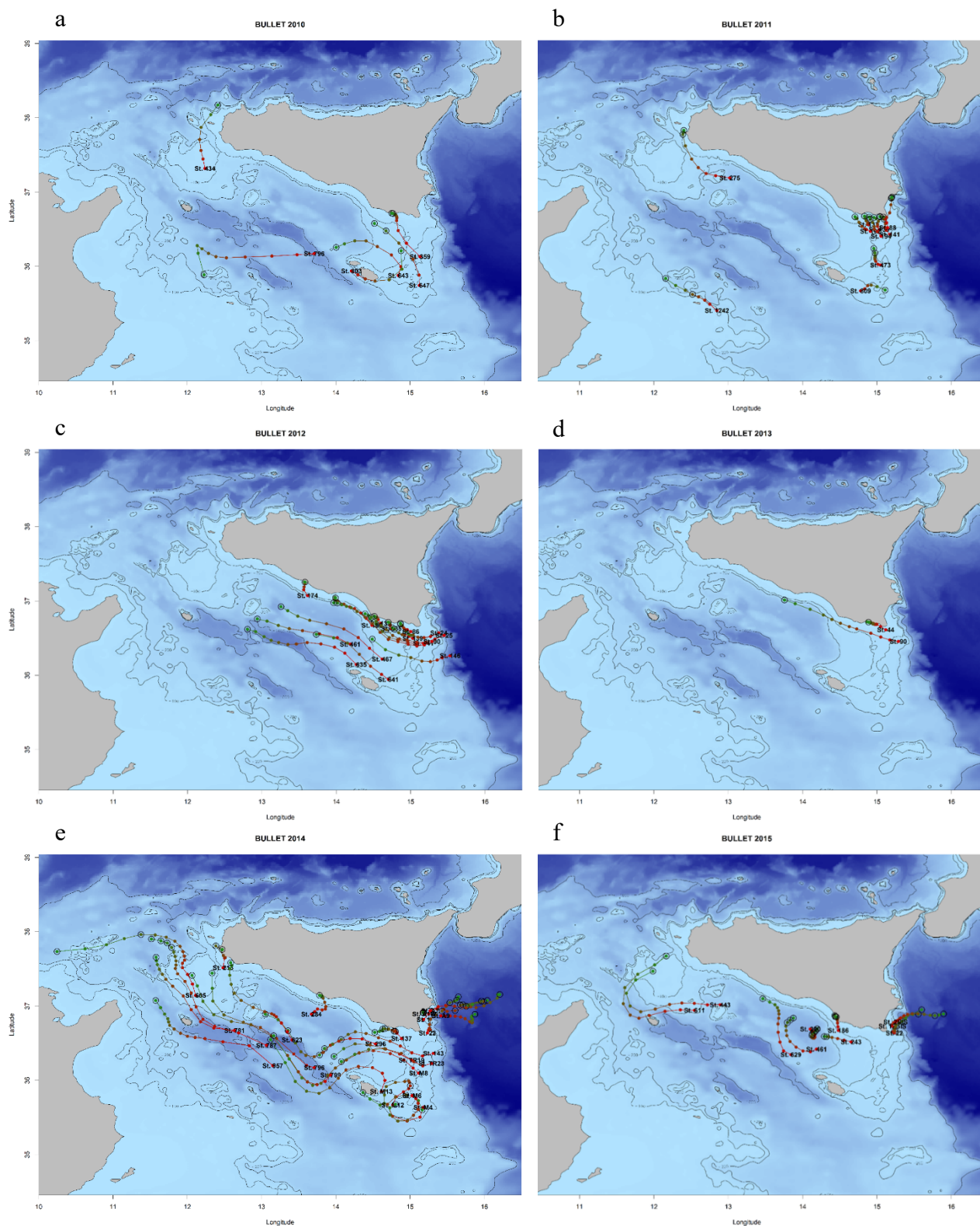


Figure S2. Centroids per year of some longer-lived Bullet Tuna larvae. The red points correspond to the sampling stations highlighted with the identification number, in green circled, the calculated average point of origin (a-f).

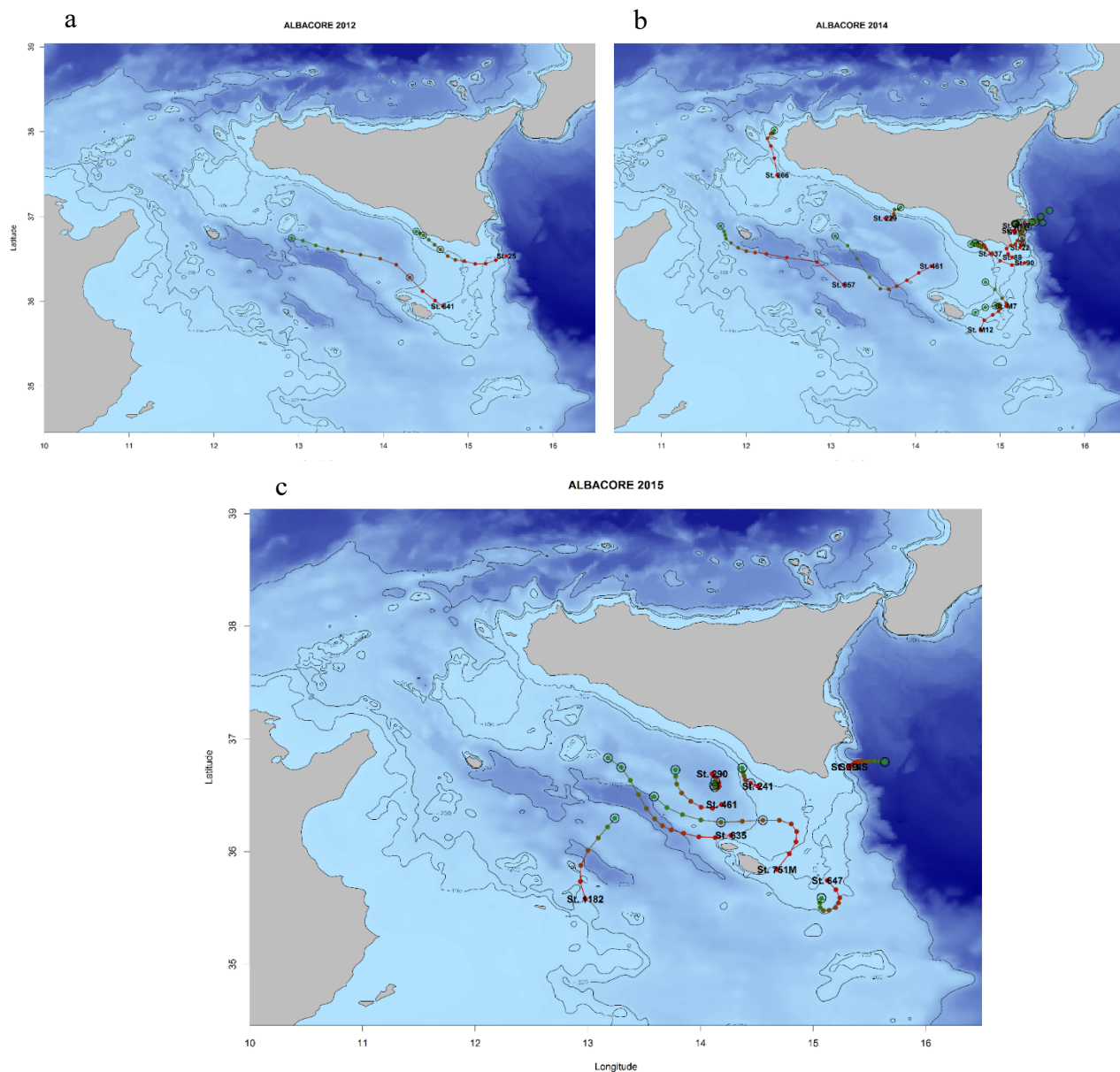


Figure S3. Centroids per year of some longer-lived Albacore Tuna larvae. The red points correspond to the sampling stations highlighted with the identification number, in green circled, the calculated average point of origin (a-c).