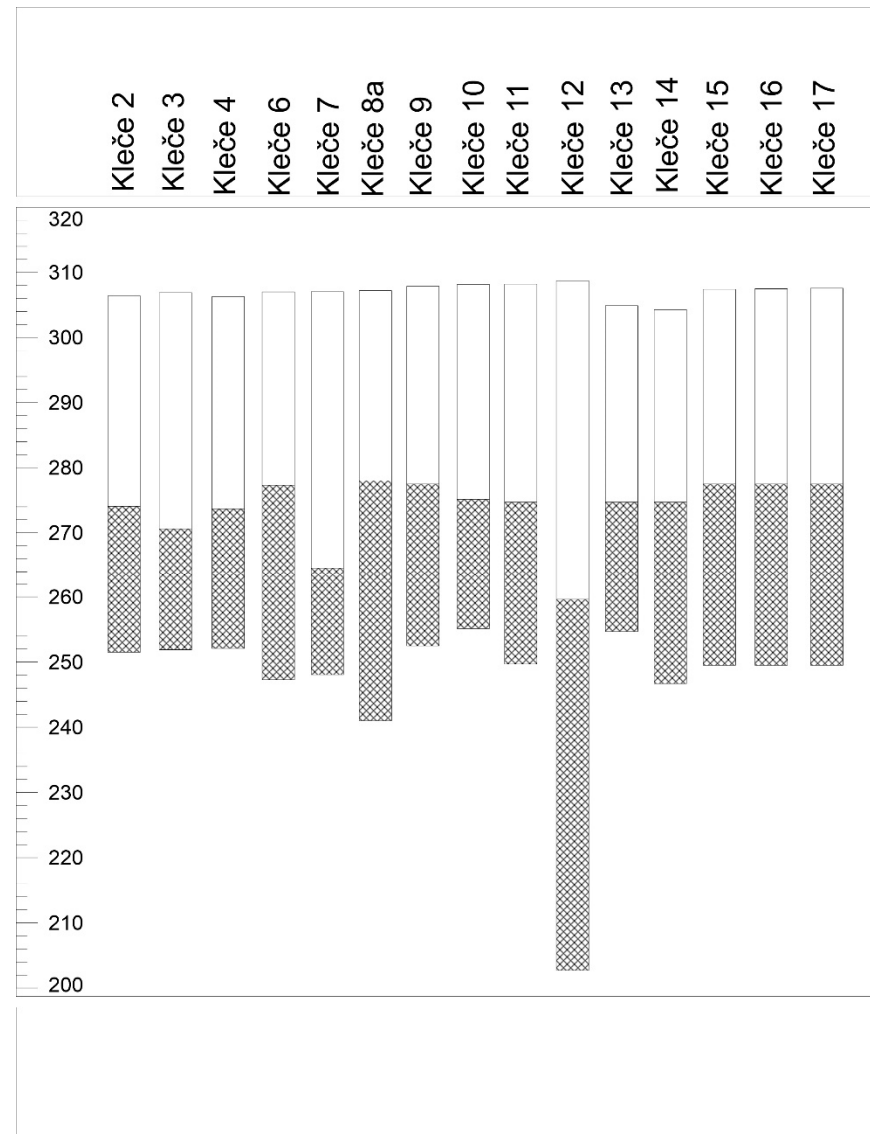


Figures S1 – The locations of the active wells at Ljubljansko polje and Ljubljansko barje (Atlas okolja (gov.si) and depth of perforated screens in wells (JP VOKA SNAGA d.o.o.)

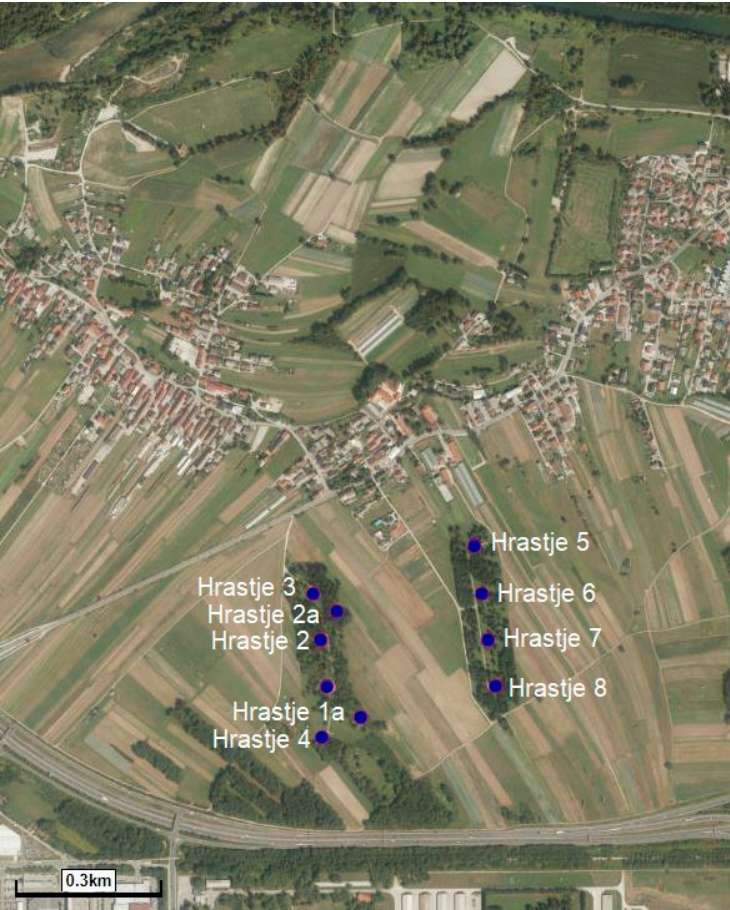
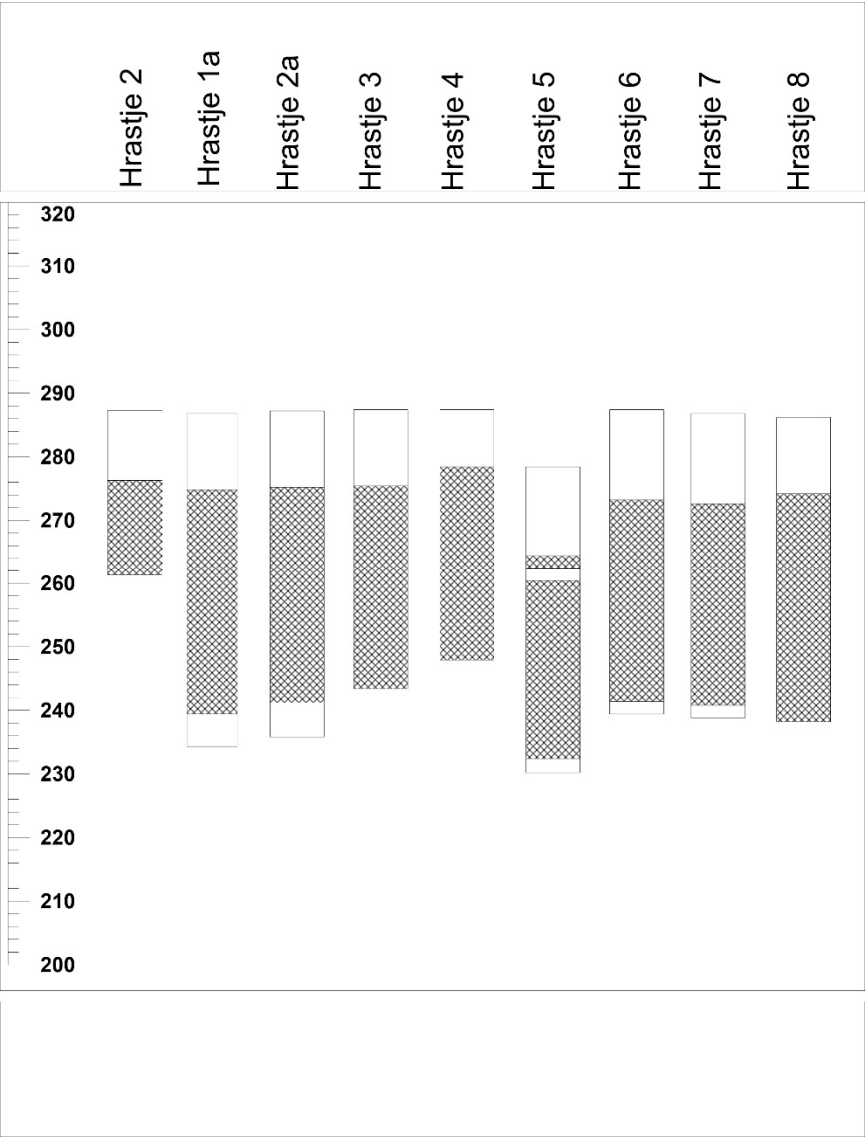
Names of sampled wells:

Kleče	Hrastje	Brest	Jarški prod	Šentvid
•VD Kleče-2	•VD Hrastje-1a	•VD Brest-1	•VD Jarški prod-1	• VD Šentvid-1a
•VD Kleče-3	•VD Hrastje-2	•VD Brest-2	•VD Jarški prod-2	• VD Šentvid-2a
•VD Kleče-4	•VD Hrastje-2a	•VD Brest-3	•VD Jarški prod-3	• VD Šentvid-3
•VD Kleče-6	•VD Hrastje-3	•VD Brest-4		
•VD Kleče-7	•VD Hrastje-4	•VD Brest-5		
•VD Kleče-8a	•VD Hrastje-5	•VD Brest-6		
•VD Kleče-9	•VD Hrastje-6	•VD Brest-7		
•VD Kleče-11	•VD Hrastje-7	•VD Brest-8		
•VD Kleče-10	•VD Hrastje-8	•VD Brest-9		
•VD Kleče-12		•VD Brest-2a		
•VD Kleče-13		•VD Brest-4a		
•VD Kleče-14				
•VD Kleče-15				
•VD Kleče-16				
•VD Kleče-17				

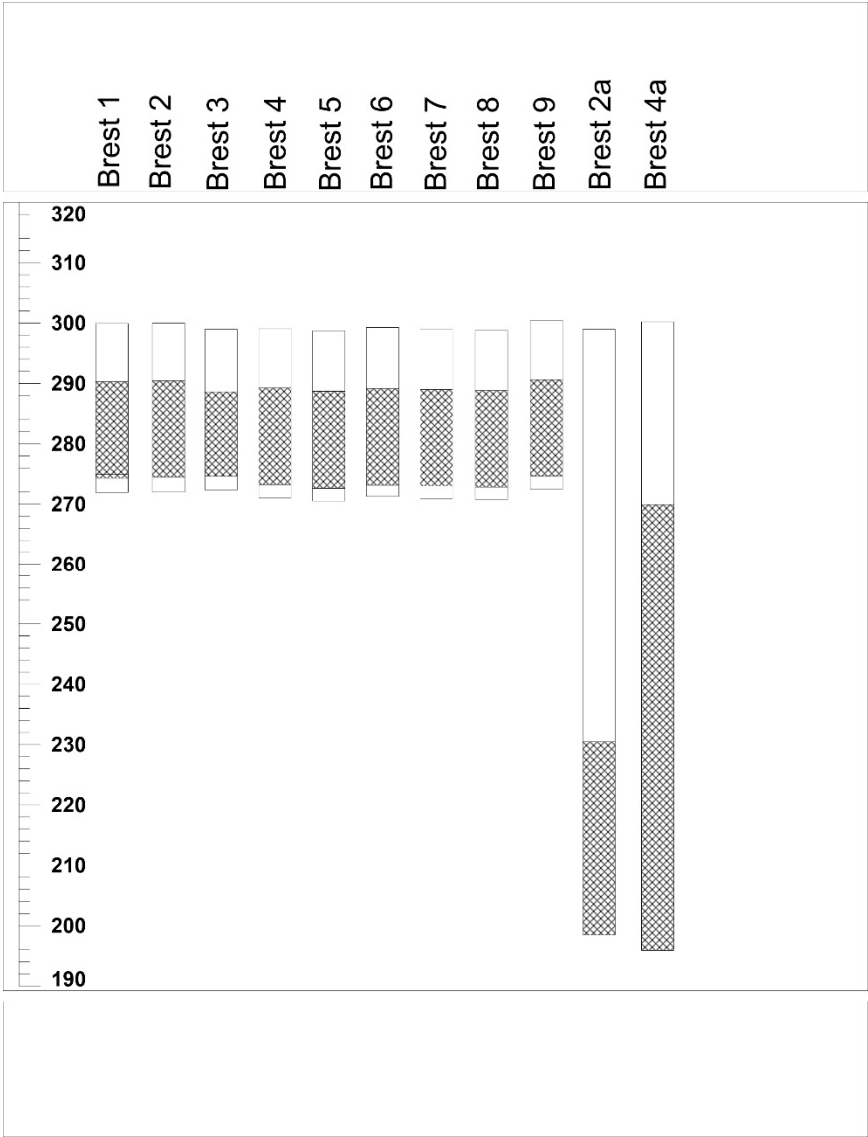
Kleče



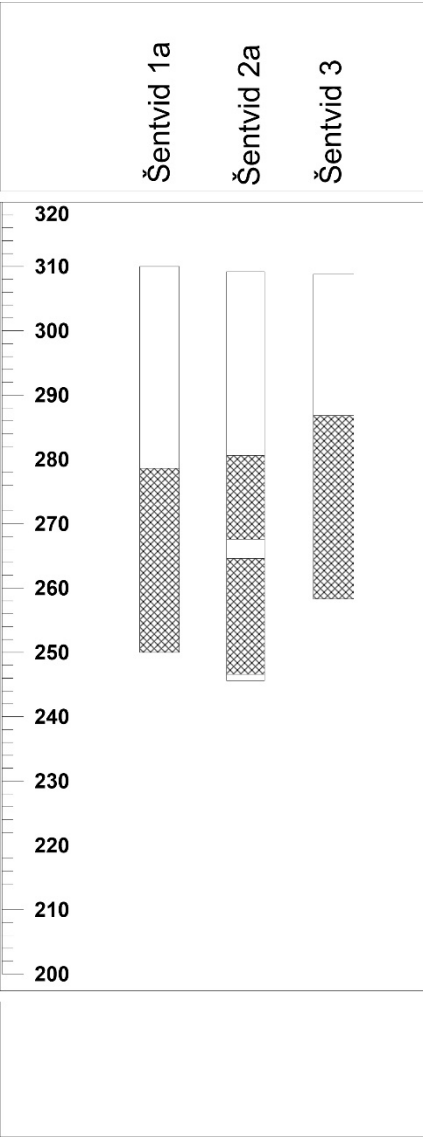
Hrastje



Brest



Šentvid



Jarški prod

