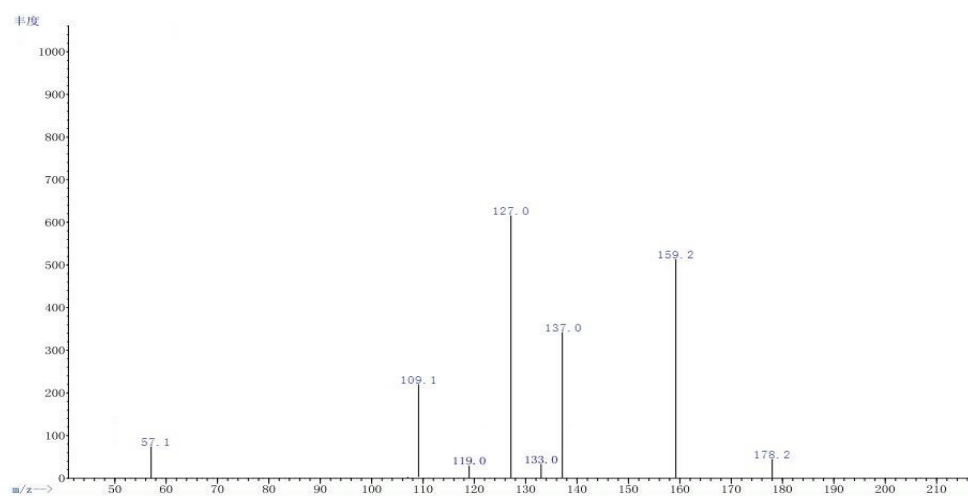


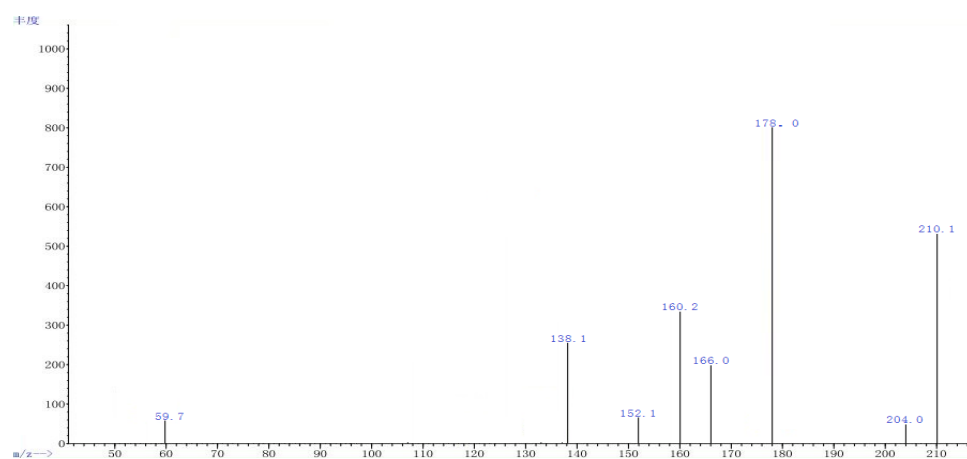
**Figure S1.** The standard curve for detecting the concentration of crude oil



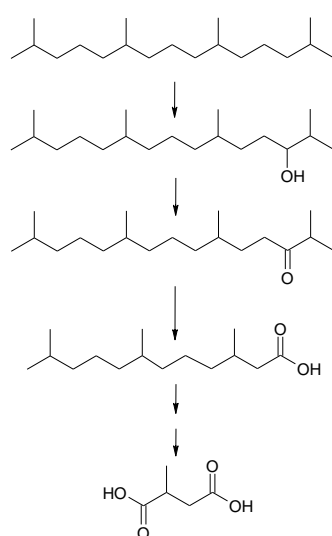
**Figure S2.** The morphology of strain MX1 under LB flat microscope



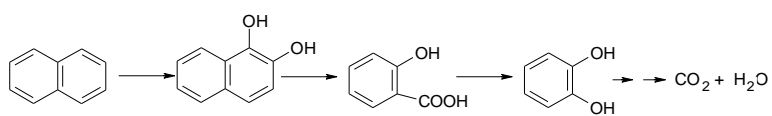
**Figure S3.** GC/MS data of the metabolite of naphthalene during the degradation by strain MXM3U2



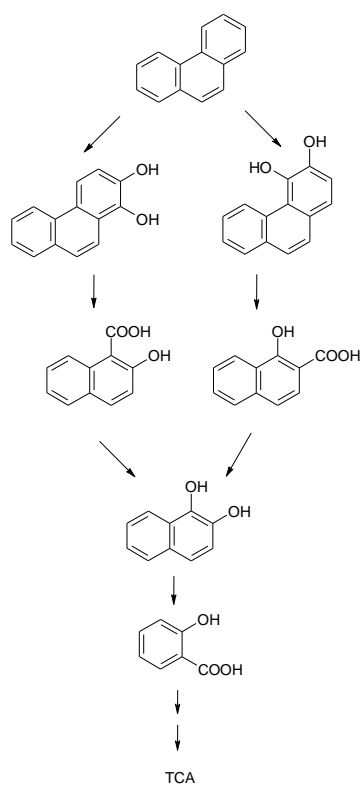
**Figure S4.** GC/MS data of the metabolite of phenanthrene during the degradation by strain MXM3U2



**Figure S5.** Proposed pathway for the degradation of pristane by strain MXM3U2



**Figure S6.** Proposed pathway for the degradation of naphthalene by strain MXM3U2



**Figure S7.** Proposed pathway for the degradation of phenanthrene by strain MXM3U2