

Supplementary information

Article

Continuous Flow Photocatalytic Degradation of Phenol Using Palladium@Mesoporous TiO₂ Core@Shell Nanoparticles

Moses T. Yilleng^{1,2}, Nancy Artioli^{1,3}, David Rooney¹ and Haresh Manyar^{1,*}

¹ School of Chemistry and Chemical Engineering, Queen's University Belfast, David-Keir Building, Stranmillis Road, Belfast BT9 5AG, UK; yilleng@yahoo.com (M.T.Y.); nancy.artioli@unibs.it (N.A.); d.rooney@qub.ac.uk (D.R.)

² Department of Chemistry, Kaduna State University, Tafawa Balewa Way, Kaduna 800001, Kaduna State, Nigeria

³ Department of Civil, Environmental, Architectural Engineering and Mathematics, University of Brescia, Via Branze, 43, 25123 Brescia, Italy

* Correspondence: h.manyar@qub.ac.uk

HPLC analysis was performed using Agilent 1100 system equipped with Eclipse XDB-C18 reverse phase column (3.5µm, 4.6×150mm) and Diode Array Detector (DAD) at a wavelength of 254nm using 50% methanol and 50% water as the mobile phase. An example of the HPLC chromatogram is shown below.

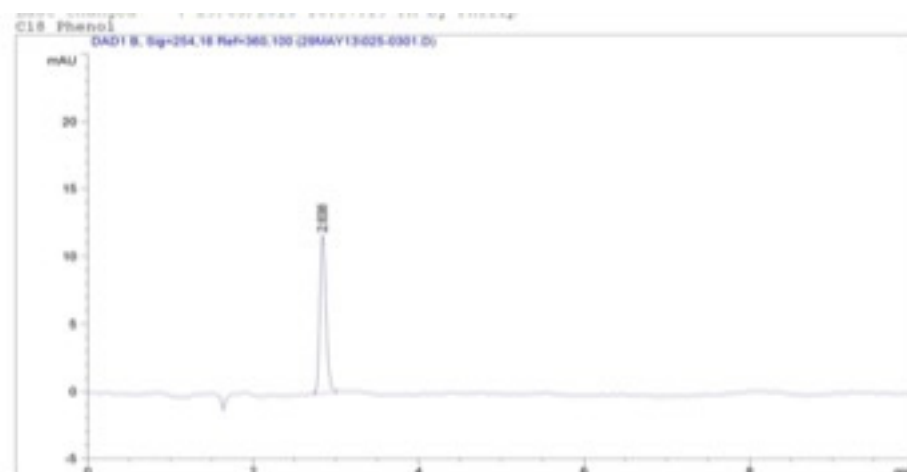


Figure S1. An example of HPLC chromatogram.