


Article

Total Maximum Daily Load Application Using Biological Oxygen Demand, Chemical Oxygen Demand, and Ammoniacal Nitrogen: A Case Study for Water Quality Assessment in the Perai River Basin, Malaysia

Siti Multazimah Mohamad Faudzi ¹, Danial Nakhaie Mohd Souhkri ¹, Muhammad Fitri Mohd Akhir ¹ , Hamidi Abdul Aziz ², Muhammad Zaki Mohd Kasim ¹, Nor Azazi Zakaria ¹ and Noor Aida Saad ^{1,*} 

¹ River Engineering and Urban Drainage Research Centre, Universiti Sains Malaysia, Nibong Tebal 14300, Malaysia

² School of Civil Engineering, Universiti Sains Malaysia, Nibong Tebal 14300, Malaysia

* Correspondence: aidaaad@usm.my; Tel.: +60-4-5996538

Abstract: Water shortage has been an issue for urbanized areas. For the Penang state in Malaysia, it is forecast that there will be a significant increase in water demand in the future. Penang authorities in Malaysia are trying to find an alternative water source to overcome the problem, with one of the options being the Perai River catchment. However, the river water quality was found to be polluted and not suitable to be used for water extraction for domestic consumption. This paper aims to study the pollution level variation due to changes in rainfall during the year in the Perai River Basin, and estimate the TMDL of the river in a particular case for BOD, COD, and NH₃N parameters. A water quality model was developed for the Perai River, Jarak River and Kulim River using InfoWorks ICM. The year 2016 was selected as a model event due to data availability. BOD, COD and NH₃N concentrations were used for TMDL calculation, and the load duration curve approach was used to estimate TMDL. The tidal effect at the downstream of the Perai River was found to impact the data analysis in the river stretch. It was found that pollutant load exceedance was the highest during the rainy season and the problematic pollutant was NH₃N. Thus, local authorities need to focus on tidal and seasonal change factors when developing action plans to manage water quality issues in this basin.

Keywords: river pollution; water quality modeling; tidal effect; seasonal changes; TMDL



Citation: Mohamad Faudzi, S.M.; Mohd Souhkri, D.N.; Mohd Akhir, M.F.; Abdul Aziz, H.; Mohd Kasim, M.Z.; Zakaria, N.A.; Saad, N.A. Total Maximum Daily Load Application Using Biological Oxygen Demand, Chemical Oxygen Demand, and Ammoniacal Nitrogen: A Case Study for Water Quality Assessment in the Perai River Basin, Malaysia. *Water* **2023**, *15*, 1227. <https://doi.org/10.3390/w15061227>

Academic Editors: Chi-Feng Chen and Chia-Ling Chang

Received: 30 January 2023

Revised: 13 March 2023

Accepted: 15 March 2023

Published: 21 March 2023



Copyright: © 2023 by the authors. Licensee MDPI, Basel, Switzerland. This article is an open access article distributed under the terms and conditions of the Creative Commons Attribution (CC BY) license (<https://creativecommons.org/licenses/by/4.0/>).

1. Introduction

Fresh water is one of the essential elements of human life. This is why nearly all civilizations seem to have started near the rivers: for easy accessibility to fresh water. The same thing also applies to the Penang state in Malaysia, that is populated by approximately 1.8 million people. The Penang state water supply relies mostly on the Muda River, which originates in the Kedah state and empties into the Penang state. However, the Penang state has recently been hit by much bad news relating its water resource, regarding changes in logging policy at the Muda River catchment, which may affect the base flow of the Muda River, along with climate change that affects the total rainfall of both Air Itam and Teluk Bahang Dam [1]. Based on the projection analysis and economic growth, it is forecast that there will be a significant increase in water demand in the future [2]. Due to these facts, the state government has shown interest in finding a new water source to accommodate potable water for its people. The Perai River basin, which originated in Kulim and flows south to Butterworth, is the largest basin in the Penang state. Thus, the possibility to use water from the Perai River has been considered as an option for tapping this new source.

It is usually a challenge for the local authorities to determine the river's assimilative capacity or, in other words, the quantity of pollutant load that can be delivered to the water

body without violating water quality requirements or damaging the aquatic life when there is a development [3,4]. A water body has potential to naturally absorb and use a substance that has been released without affecting its water quality or aquatic life [5,6]. Since, the assimilative capability is considered a site-specific characteristic associated with particular water bodies [7,8], the most common method to measure and manage a river's assimilative capacity or stream is using the total maximum daily load (TMDL) [9].

The TMDL determines the maximum amount of a pollutant that can enter a water body while still allowing the water body to maintain water quality criteria for that specific pollutant [4]. A TMDL determines a pollutant reduction target and allocates load reductions necessary for the sources of the pollutant [10–12]. Pollutant sources are characterized as either point sources that receive a waste load allocation (WLA) or non-point sources that receive a load allocation (LA) [7]. At the same time, TMDLs must also consider seasonal water quality variations and include a margin of safety (MOS) to account for uncertainty in predicting how well pollutant reductions will result in fulfilling water quality standards. A good TMDL process should also include an assessment of the water body characteristics, communicating with the communities affected by the water body, and developing a plan to remediate the pollution problem over time [13–15]. Thus, the TMDL can be understood as a calculation of the point and non-point source loadings that are allowable in a water body, while implementing a water quality improvement plan.

Unfortunately, it has been seen that urbanization has influenced particular areas of the basin viz, such as Butterworth and Perai, as industrial areas. In fact, most of these areas have been developed without considering the impact on the receiving water body. The Perai River is approximately 60.5 km long and the basin covers approximately 447 km² of both the state of Penang and Kedah areas. The upstream part of the basin, filled with agriculture and animal husbandry, continues adding waste to the river system. As a result, the pollution exceeds the assimilative capacity and disturbs the river's life. Various industries sprouted up over the decades, with economic growth to support the country's economy. Unfortunately, the river and its tributaries were ignored and turned into a disposal channel, washing the waste away during rainy seasons. Finally, the river has become polluted and water quality has deteriorated over the years [16].

For a long time, the water quality index (WQI) was used as a key indicator to monitor the scale of the river's cleanliness. However, the WQI is limited only to monitoring the river and does not quantify the load flowing of the river. Current environmental legislation does not emphasize the number of pollutants that can be discharged. The water quality management program needs the information of the load to develop a suitable and practical approach to reduce pollution levels in a river. That is when TMDL play its role. This method is used worldwide and has proven useful in managing water quality. The United States of America is one of the leading countries using this method to solve river pollution [17,18].

Numerous analyses using tools such as hydrodynamic modeling were conducted in the Perai River basin. However, most of the modeling program was dedicated to studying flood risk and management. Water quality modeling needs to be conducted in the river to understand the variation of pollution levels due to changes in rainfall and tidal effect during the year. At the same time, data generated from the model can be used to formulate the TMDL for the river. Therefore, this paper aims to study the pollution level variation due to changes in rainfall over the year and estimate the TMDL of the river in a particular case for BOD, COD, and NH₃N parameters. This study was necessary to provide the TMDL based on several hydrological conditions, which may help in developing action plans to manage river water quality issues.

2. Materials and Methods

2.1. Water Quality Modeling Workflow

There are three main components of the study: (1) data collection, (2) water quality modeling and (3) TMDL estimation. Figure 1 visualizes the workflow of this study.

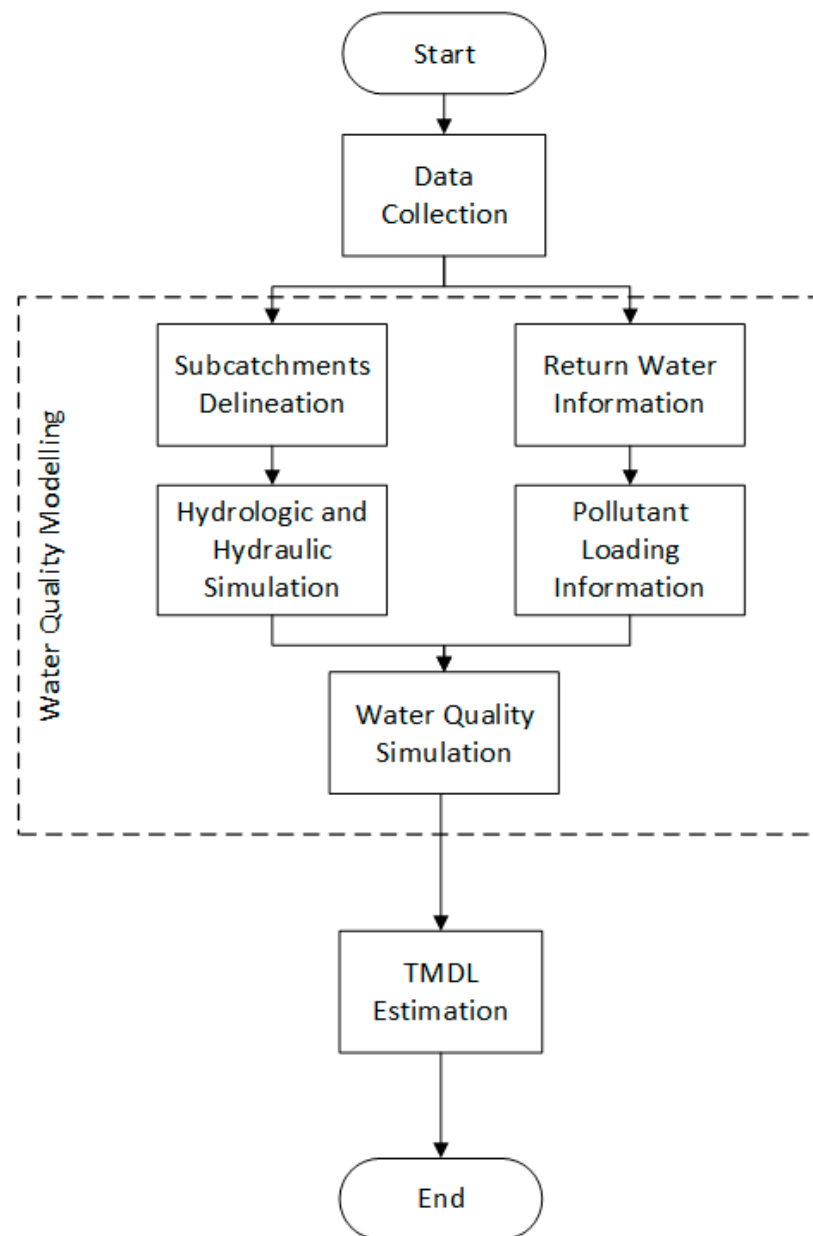
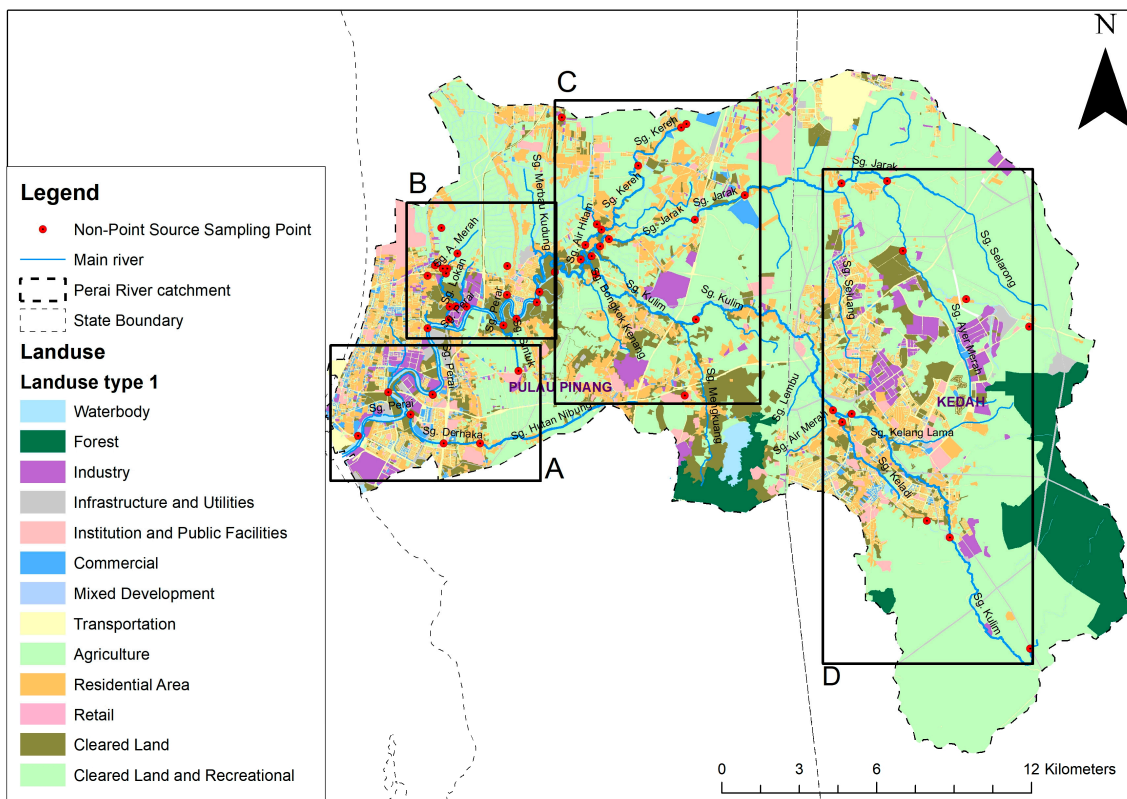


Figure 1. Water quality study for the TMDL estimation.

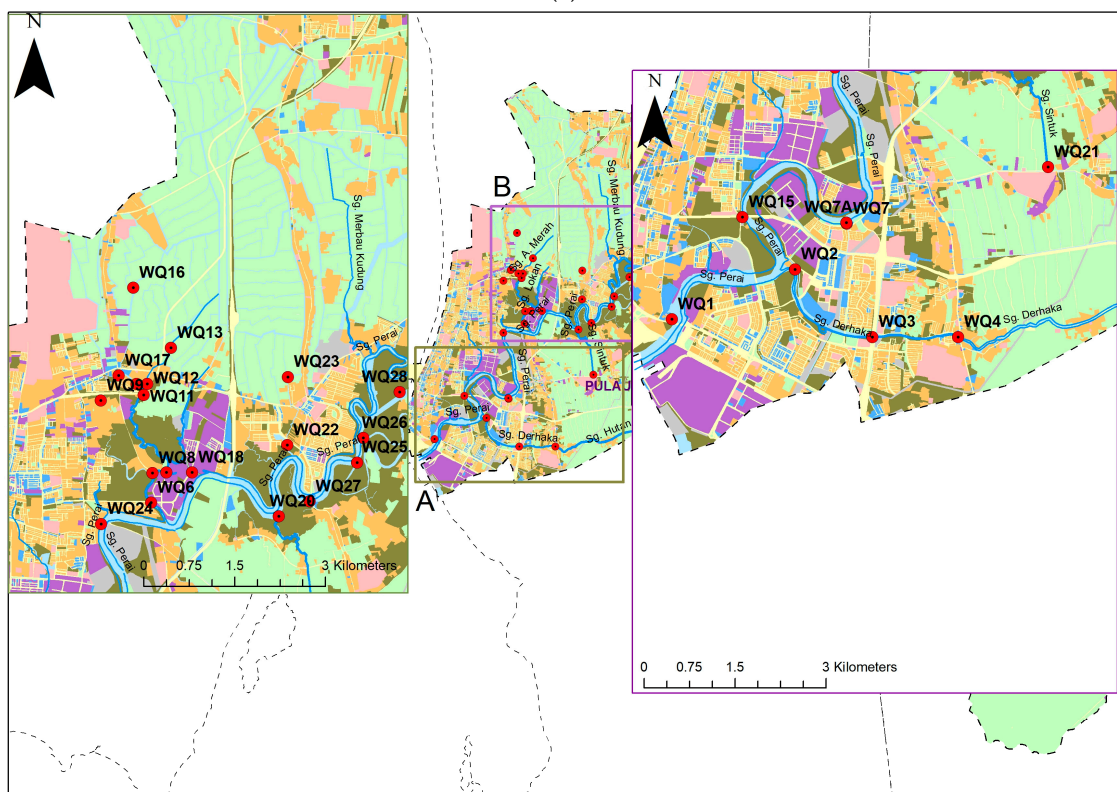
2.2. Water Quality Data

The water quality of the Perai River and its tributaries have been subjected to periodic monitoring and assessment by the Department of Environment (DOE), Malaysia. Data of nine stations were analyzed within the Perai River basin and the water quality at these stations was monitored six times a year. The stations are usually situated downstream of known point pollution sources to monitor the river quality. Data received from DOE was further analyzed using WQI to evaluate the existing condition of the river and for model validation.

The primary data was made via sampling at the Perai River. The main parameters involved are COD, BOD and NH_3N . The concentration data were essential to be input for water quality model development. The location of the sampling station is visualized in Figure 2.



(a)



(b)

Figure 2. Cont.

The PDM parameter used for each sub-catchment varied depending on the catchment length, slope, and land use. These values were adopted after various simulations during the calibration process. Too many parameters required calibration; however, since automatic calibration is impossible to carry out, manual calibration was done. Therefore, only a few significant parameters were adjusted to match the observed. The significant PDM parameters were: minimum moisture store capacity, C_{min} ; maximum moisture store capacity, C_{max} ; time constant surface, $K1$; and time constant surface flow storage, $K2$ [22,23]. These parameters influenced the infiltration and time of the rising hydrograph.

Simulation of hydrologic and hydraulic needs of the river, and drainage, digital terrain model (DTM), land use, population, and hydrological data were required. All data were collected from several government agencies.

2.4. Calibration and Validation Data

The purpose of the calibration was to determine whether the parameters adopted in the model showed a good response toward the rain input. Observed streamflow data recorded by the Department of Irrigation and Drainage (DID) were used to compare runoff results from the PDM simulation via statistical analysis. The involved software that processed the statistics was SPSS 27 version.

The validation method was similar to the calibration. Simulated water quality parameters in analysis points were validated with DOE data. They were then statistically analyzed via residual plot and linear regression.

2.5. Water Quality Modeling

Water quality model development focused on data input of return water. The model was generated using InfoWorks ICM. The minimum and maximum concentration of the parameters in the dry and wet seasons are listed in Tables A1 and A2 of Appendix A. Figure 3 visualizes the general schematic of data input in the water quality model.

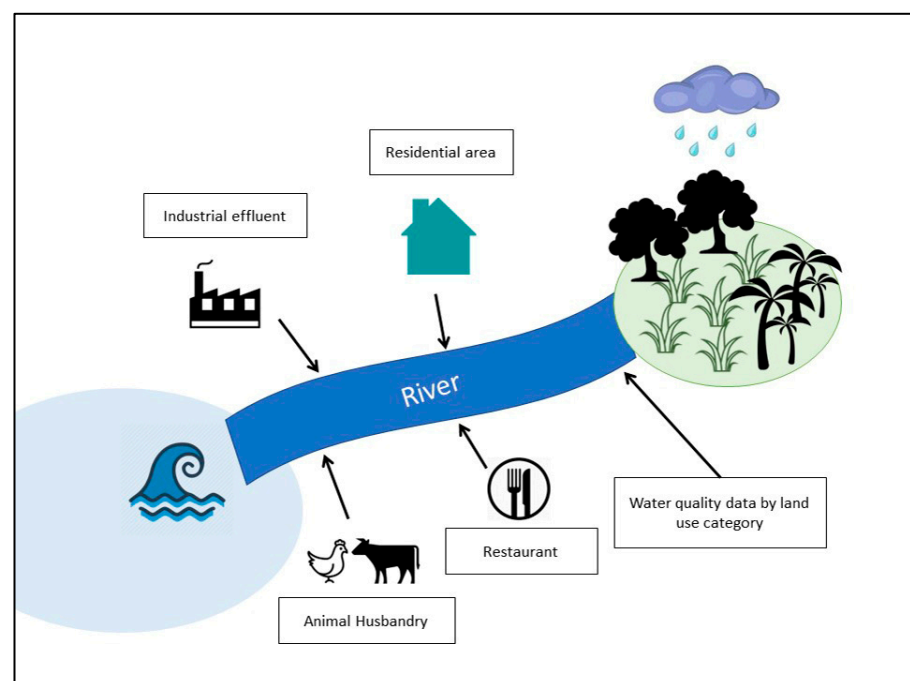


Figure 3. The general concept of the water quality modeling.

Sullage water, also known as return water, mainly comes from residential areas [24,25]. As a preliminary estimation, the sullage water distribution is based on the paper “Untreated sullage from residential areas—a challenge against inland water policy in Malaysia” [26].

Al-Mamun et al. [26] provided the hourly sullage water flow from the study area located in Taman Sri Serdang, with an area of about 6.14 ha. The study area is a residential area with a typical Malaysian housing scheme in an urban setting, which consists of 283 units of single-story terrace houses. The area was developed in 1981 and all sullage from the houses is discharged into a nearby detention pond, which flows into the receiving Kuyoh River. Sewage from the houses is conveyed by a separate sewer line and treated in an oxidation pond. Selangor Water Management Board Limited provides all houses with potable water. The total population served in the area was calculated at 1448-person equivalent (or 236-person equivalent per ha).

Return water from each sub-catchment was estimated based on land-use activity and various guidelines and manuals, i.e., the SPAN manual and water demand information from the local authority. The value for each source (point source and non-point source) was based on other references.

2.6. Total Maximum Daily Loads

Mathematically, the TMDL equation is expressed as per Equation (2). Meanwhile, pollution loading of point sources and non-point sources can be computed using Equation (3) [27]. Water assimilative capacity (WAC) was also defined by the multiplication of flowrate and concentration.

$$\text{TMDL} = \Sigma\text{WLA} + \Sigma\text{LA} + \text{MOS} \quad (2)$$

where:

WLA = Sum of waste load allocations (point sources) (kg/day)

LA = Sum of load allocations (non-point sources and background) (kg/day)

MOS = Margin of safety

$$\text{Loading (kg/day)} = \text{flowrate (m}^3/\text{day)} \times \text{concentration (kg/m}^3) \quad (3)$$

The MOS of the WQI refers to class II as the limit value for water intake. Class II is classified as a water supply that needs conventional treatment and is suitable for sensitive aquatic species to live in. A MOS value of 10% was used in this calculation. In Malaysia, there are 6 parameters involved in WQI classification. As mentioned before, 3 parameters of the WQI were discussed: NH_3N (0.3 mg/L), BOD (3 mg/L), and COD (25 mg/L), as reference values for water quality pattern analysis. DOE Malaysia has classified the WQI value into 5 classes, as shown in Table 1.

Table 1. WQI classification by DOE.

Parameter	Unit	Class				
		I	II	III	IV	V
NH_3N	mg/L	<0.1	0.3	0.9	2.7	>2.7
BOD	mg/L	<1	3	6	12	>12
COD	mg/L	<10	25	50	100	>100

Notes: Class I: Practically no treatment necessary; Class II: Conventional treatment applied; Class III: Extensive treatment required; Class IV: Irrigation; Class V: None of the listed.

The TMDL estimation in this study was done using the load duration curve approach. The duration curve approach provides a better understanding of pollution loading and river flow. The flow duration curve (FDC) was developed based on simulation data. Information from FDC is crucial in determining the hydrological condition classes of the river: high flow (0–10% FDC); moist condition (10–40% FDC); mid-range condition (40–60% FDC); dry condition (60–90% FDC); and low flow (90–100%) [28]. FDC was further analyzed to estimate the pollution loading for each scenario. The concentration for each class was then estimated from the 90th percentile. Not focusing on high and low-flow classes is

recommended, as both are extreme conditions. Thus, the analysis is more focused on mid-range conditions.

The TMDL estimation was done on three main rivers in this basin: Perai River, Jarak River and Kulim River. The estimation was based on the location of the analysis point, as shown in Figure 4. There are three analysis locations: P1, represented downstream of the Perai River; P2, downstream of the Jarak River; and P3, located downstream of the Kulim River. Figure 4 also shows the location of upstream Kereh River flows in the Jarak River. The details of the three points are tabulated in Table 2.

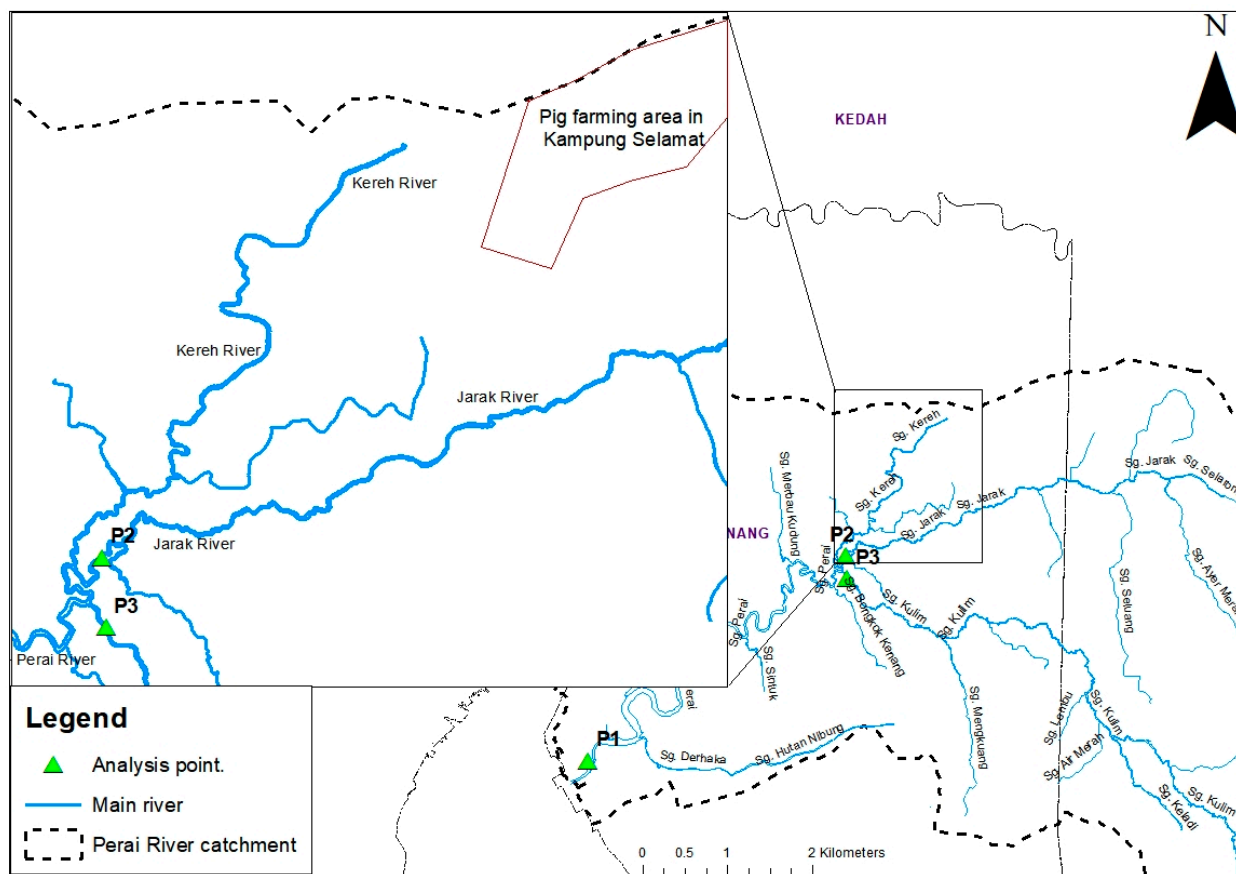


Figure 4. Location of TMDL points.

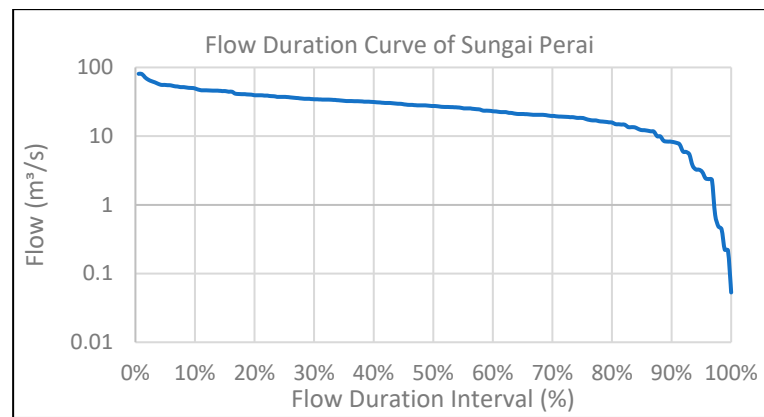
Table 2. Details of TMDL points.

Name	Number	Latitude	Longitude	Description
Analysis point 1	P1	5°23'25.16"	100°22'31.47"	Downstream of the Perai River
Analysis point 2	P2	5°27'19.12"	100°27'25.75"	Downstream of the Jarak River
Analysis point 3	P3	5°26'52.67"	100°27'27.30"	Downstream of the Kulim River

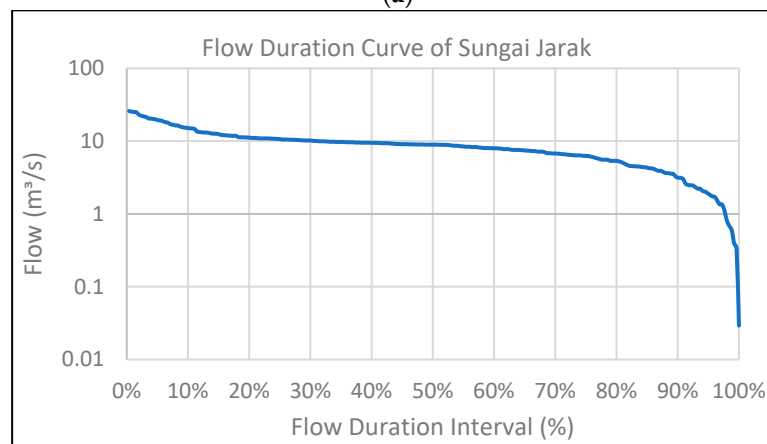
3. Results and Discussion

3.1. Calibration of Simulated Flow Data

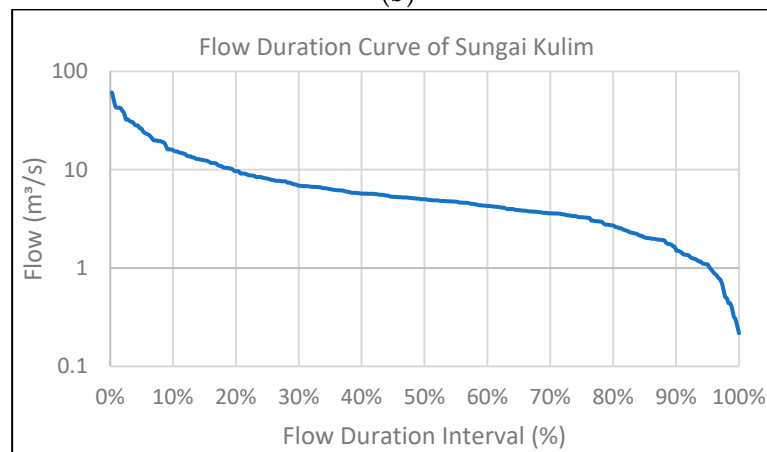
The tidal effect can be observed downstream of the Perai River and its tributaries, as shown in Figure 5. Thus, backflow data (negative value flow) were filtered from the simulated result to achieve a more reasonable estimation.



(a)



(b)



(c)

Figure 5. FDC for each river in the Perai River basin. (a) Perai River; (b) Jarak River; and (c) Kulim River.

Based on the residual plot in Figure 6, which exhibits heteroscedasticity, the residuals get larger as the prediction (observed data) moves from small to large or otherwise. From this analysis, the residual was larger when the observed data were increased due to the outlier caused by uncertain weather and extreme events. Some outliers have been cleaned using the z-score method to achieve parametric data. However, heteroscedasticity was still formed, resulting from missing variables or sample data. The sample size could have been reduced if it is more than 250. For instance, this sample size was reduced from 366 to 333.

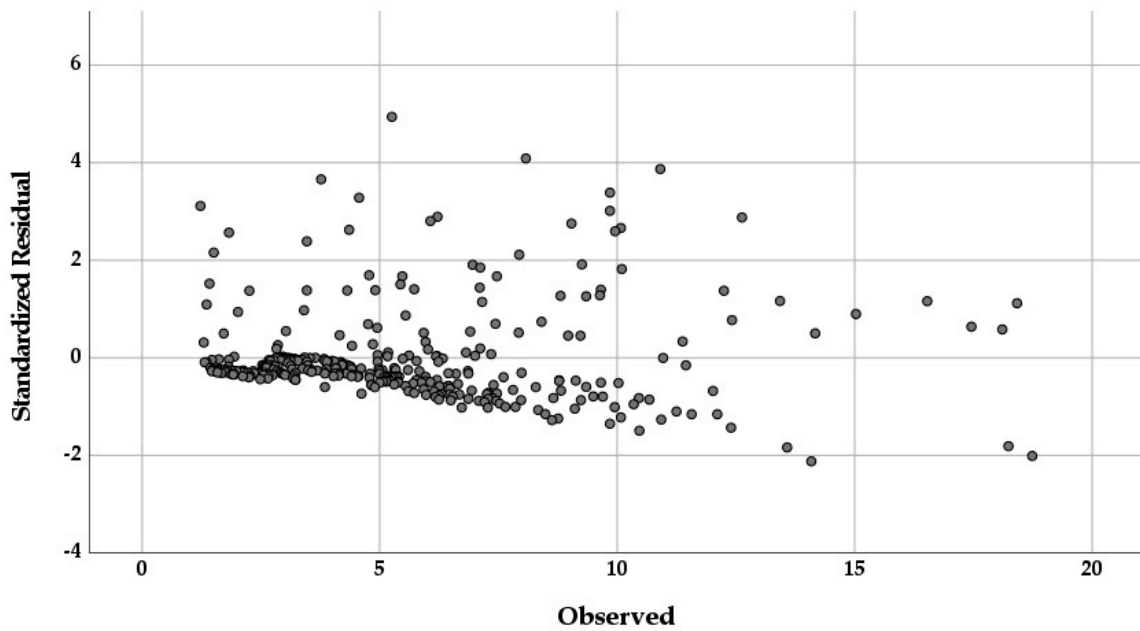


Figure 6. A scattered plot graph between standardized residuals vs. observed.

Based on the goodness of fit from the linear regression model in Figure 7, the R-squared value is 0.306. This indicates that the model cannot explain 70% of the variability in the outcome data due to the high flow. However, a clear pattern was shown in the residual and goodness of, whereby most of the low flow concentrated near the line. This indicates that the model is unbiased, but has low accuracy and potentially room for improvement. The p -value in the regression model is statistically significant, with a value of 4.2467×10^{-28} . Moreover, the Pearson correlation suggests that the observed and simulated values have a moderate correlation, with a value of $R = 0.533$. Therefore, this simulation data can be used and trusted in the water quality model.

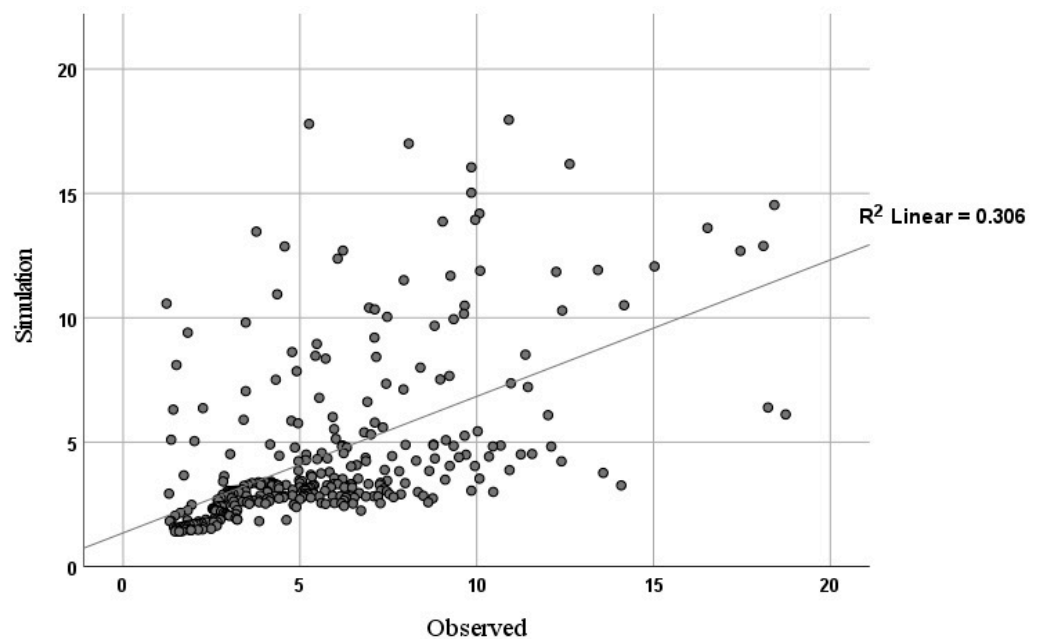


Figure 7. Goodness of fit from the flow data linear regression.

3.2. Validation of Simulated Water Quality Data

Based on the regression model in the Table 3, all the models are normal and statistically significant, with a p -value < 0.5 . NH_3N showed strong correlation and a good model, with values of 0.797 and 0.635, respectively. On the other hand, BOD and COD illustrated weak models in Figure 8, with values of 0.302 and 0.368, respectively. However, the correlation seems moderate to strong, which encourages considering accepting the models.

Table 3. Regression model summary.

Model	Skewness	Kurtosis	Pearson Correlation, R	R ²	p -Value
BOD	0.631	−0.154	0.550	0.302	0.015
COD	0.494	−0.978	0.607	0.368	0.004
NH_3N	0.148	−0.421	0.797	0.635	0.001

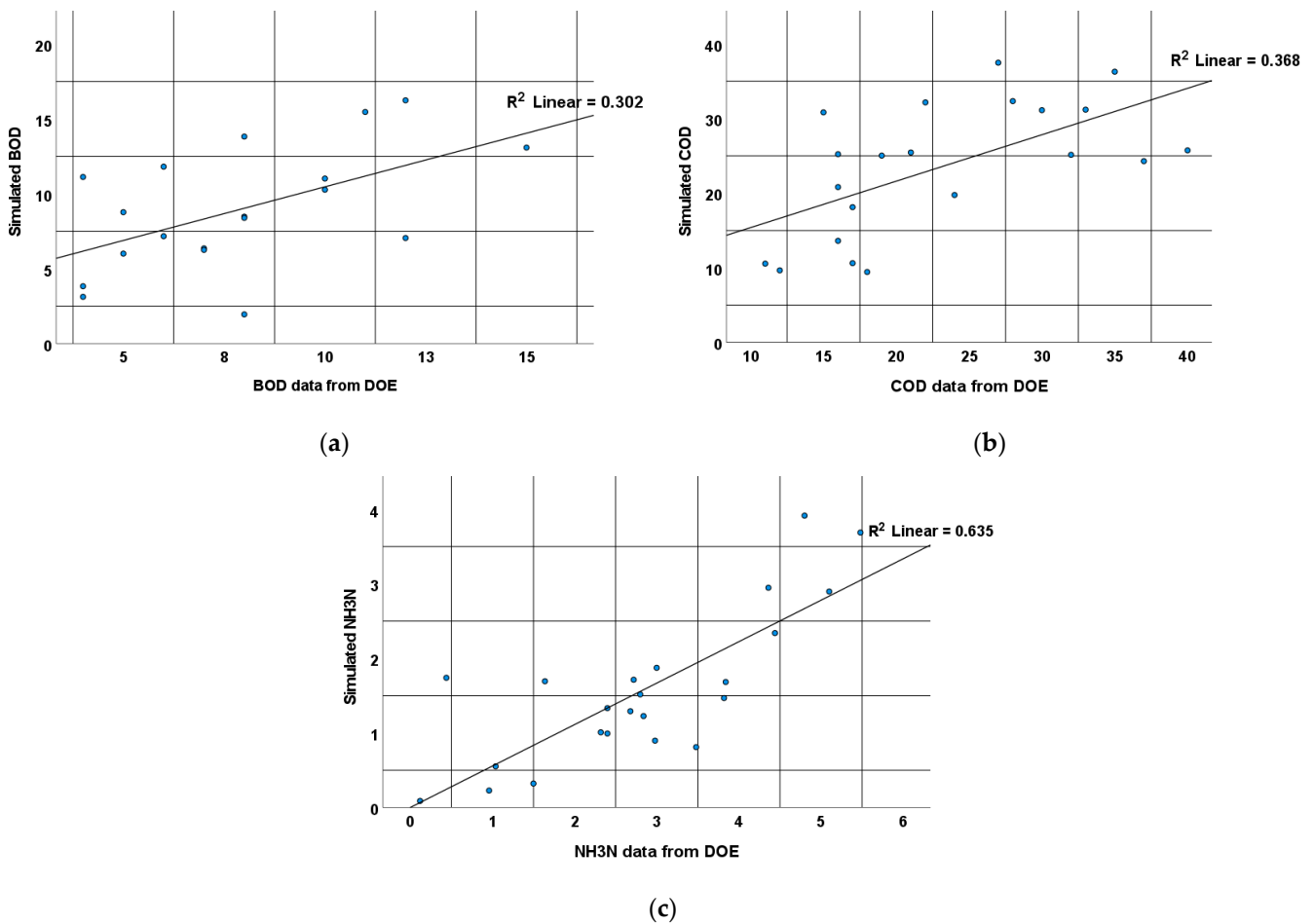


Figure 8. Goodness of fit from the water quality linear regression model (a) BOD (b) COD (c) NH_3N .

3.3. TMDL of the Perai River

The Perai River (analysis point 1) flow and water quality depend on the pollution from the catchment and pollution from the sea. This location is sensitive to the tidal effect. The effect not only impacts the flow and depth of the water body, but also the water quality, as during a high tide, the pollution from the sea may enter the river and travel upstream. Negative value flows that represent high-tide-related backflow are eliminated from the results before the calculation is completed. Instead of focusing on the sea, this study’s objective is to quantify the reduction from the upstream area. Because the TMDL is concentrated on the pollution caused by activities on the mainland, only positive flow

values were taken into account. Based on Table 4, the lowest load can be observed during low-flow conditions. However, the concentration is currently the highest. This happens due to less water, resulting in less load being transferred per second. The highest load for BOD and COD was observed during moist conditions, while NH₃N had the highest load during high-flow conditions. Both conditions reflect the rainy season, which could assume that most of the incoming load from upstream of the Perai River is a non-point source pollution.

Table 4. TMDL, load exceedance, and reduction estimation for the Perai River.

Hydrologic Condition Class	Daily Load (Tonne/Day)			WAC (Tonne/Day)			Exceedance (Tonne/Day)			Reduction (%)		
	BOD	COD	NH ₃ N	BOD	COD	NH ₃ N	BOD	COD	NH ₃ N	BOD	COD	NH ₃ N
High Flow	15.8	64.8	31.5	12.9	107.2	1.3	2.9	0	30.2	18.6	0	95.9
Moist Condition	42.8	114.4	16.2	8.6	71.3	0.9	34.2	43.2	15.4	80.0	37.7	94.7
Mid-Range Flows	32.7	87.3	11.0	6.2	51.9	0.6	26.5	35.4	10.4	81.0	40.6	94.4
Dry Condition	21.2	56.5	7.6	3.9	32.9	0.4	17.2	23.6	7.2	81.4	41.7	94.8
Low Flow	3.0	7.9	1.1	0.5	4.5	0.1	2.4	3.4	1.1	81.6	42.6	95.1

Note: A '0' value indicates that there is no need for a reduction, because the parameter does not exceed the WAC limit.

All parameters exceed waste assimilative capacity (WAC) for all hydrological conditions during high flow, except COD. The exceedance was the highest during the rainy season and lowest during the dry season. In order to manage the river according to Class II, the required reduction of BOD is 81.6% (during moist conditions) and 95.9% for NH₃N (during high-flow conditions). Less reduction is needed for COD (only 43% during low flow). All reductions were based on the upstream, and the management program should consider pollutants from the sea for the Perai River condition. In this simulation result, the backflow data have been filtered to represent upstream pollution. The pollutants flowed downstream at the beginning of the low tide and may be the result of seawater intrusion from the high tide. Increase of COD can be caused by the interference of the chloride ions (Cl⁻), especially in samples with high salinity [29].

3.4. TMDL of the Jarak River

Analysis point 2 represents the lowest point of the river before it enters the Perai River. It means the pollution discharged from the catchment and transported to the Perai River will pass the station. The highest concentration was observed to be during the mid-range condition. However, based on Table 5, the highest load was observed during high-flow conditions. From the land-use analysis, this catchment contained a big portion of agriculture and residential area. Both activities may lead to huge river loads, especially during storm events. Under other conditions, return water from the residential area may reduced the water quality of the river. However, one of the prominent pollution sources in the Perai River is pig farming in Kampung Selamat (Kereh River). The Kereh River has been reported to have several water quality problems, and most conclude that the pollution comes from pig farming activity, which is located at the most upstream of the Kereh River, as shown in Figure 4.

All parameters exceed WAC for all hydrological conditions. The load exceedance was the highest during the rainy season and lowest during the dry season. However, the mid-range condition showed the highest requirement for percentage reduction. To manage the river according to Class II, the reduction required for BOD and COD are 66.7% and 39.1%, respectively. A huge reduction is needed for NH₃N, of up to 94.3%. NH₃N is a major water quality problem, especially when extracting water for domestic usage, as it is not only bad for human consumption, but also not economical to be treated for drinking water. The possible sources of NH₃N in the Jarak River are return water from residential areas located at the Seluang River and Ayer Merah River catchments, and pig farming in

the Kereh River catchment. By managing these two activities, the NH₃N load in the river may be reduced.

Table 5. TMDL, load exceedance, and reduction estimation for the Jarak River.

Hydrologic Condition Class	Daily Load (Tonne/Day)			WAC (Tonne/Day)			Exceedance (Tonne/Day)			Reduction (%)		
	BOD	COD	NH ₃ N	BOD	COD	NH ₃ N	BOD	COD	NH ₃ N	BOD	COD	NH ₃ N
High Flow	10.6	58.2	6.1	4.5	37.5	0.5	6.1	20.7	5.6	57.5	35.5	92.6
Moist Condition	6.8	31.7	4.1	2.5	20.6	0.2	4.3	11.2	3.9	63.6	35.2	94.0
Mid-Range Flows	6.3	28.5	3.6	2.1	17.4	0.2	4.2	11.1	3.4	66.7	39.1	94.3
Dry Condition	4.3	19.7	2.4	1.5	12.1	0.1	2.9	7.6	2.3	66.3	38.4	94.0
Low Flow	1.2	5.7	0.7	0.4	3.6	0.0	0.8	2.1	0.6	64.4	37.3	93.7

3.5. TMDL of the Kulim River

Analysis point 3 (Kulim River) represents the river's downstream part. The highest concentration was observed to be during dry conditions. However, based on Table 6, the highest load was observed during the moist condition. From the land-use analysis, this catchment contained agriculture, which may increase the pollution load during the storm event. Return water from residential and poultry farms in the catchment may increase pollution concentration during the dry season.

Table 6. TMDL, load exceedance, and reduction estimation for the Kulim River.

Hydrologic Condition Class	Daily Load (Tonne/Day)			WAC (Tonne/Day)			Exceedance (Tonne/Day)			Reduction (%)		
	BOD	COD	NH ₃ N	BOD	COD	NH ₃ N	BOD	COD	NH ₃ N	BOD	COD	NH ₃ N
High Flow	4.9	21.1	0.8	5.7	47.5	0.6	0	0	0.2	0	0	28.7
Moist Condition	5.5	23.4	1.0	1.9	15.6	0.2	3.6	7.8	0.9	66.1	33.5	82.1
Mid-Range Flows	3.8	15.8	0.7	1.2	9.6	0.1	2.6	6.2	0.6	69.3	39.1	84.0
Dry Condition	3.2	14.1	0.7	0.8	6.3	0.1	2.5	7.8	0.6	76.5	55.2	88.5
Low Flow	0.9	4.1	0.2	0.2	1.9	0.0	0.7	2.3	0.2	76.2	54.5	88.4

Note: A '0' value indicates that there is no need for a reduction, because the parameter does not exceed the WAC limit.

Only BOD and COD did not exceed the WAC during high-flow conditions. The load exceedance was the highest during moist condition and lowest during high flow conditions. However, based on percentage reduction, the dry condition showed the highest requirement for percentage reduction. To manage the river according to Class II, the reduction required for BOD, COD and NH₃N is 66.7%, 39.1% and 88.5%, respectively. From land use and site visits, it was observed that the residential area was one of the dominant features in this catchment. The return water from domestic activities contains a high level of organic matter, which may increase BOD and NH₃N in the river. Improving or managing waste from the residential area should be prioritized when managing the Kulim River catchment. The poultry farm, which is in the middle part of the catchment, may not be significant; however, precautions should be taken for future development to maintain the WAC.

4. Conclusions

In the Perai River basin, three locations have been chosen (P1: downstream of the Perai River, P2: downstream of the Jarak River, and P3: downstream of the Kulim River) to evaluate the variance in pollution levels caused by changes in rainfall throughout the year. The chosen locations were also used to calculate the river TMDL for BOD, COD, and NH₃N values.

For analysis point 1, the highest load of BOD and COD was observed during moist conditions, while NH_3N had the highest load during high-flow conditions. Both conditions reflect the rainy season, which could assume that most of the incoming load from upstream of the Perai River is a non-point source pollution. All parameters exceed waste assimilative capacity (WAC) for all hydrological conditions during high flow, except for COD. The exceedance was the highest during the rainy season and lowest during the dry season. In order to manage the river according to Class II, the required reduction for BOD is 81.6% (during moist conditions) and 95.9% for NH_3N (during high-flow conditions). Less reduction is needed for COD (only 43% during low flow). The management program should consider pollutants from the sea for the Perai River condition.

The highest load for analysis point 2 could be observed during high-flow conditions. All parameters exceed WAC for all hydrological conditions. The load exceedance was the highest during the rainy season and lowest during the dry season. The reduction required for BOD, COD and NH_3N are 66.7%, 39.1% and 94.3%, respectively. The possible sources of NH_3N in the Jarak River are return water from residential areas located at the Seluang River and Ayer Merah River catchments, and pig farming in the Kereh River catchment. By managing these two activities, the NH_3N load in the river may be reduced.

Analysis point 3 had the highest concentration observed during dry conditions. Only BOD and COD did not exceed WAC during high-flow conditions. The load exceedance was the highest during moist conditions and lowest during high-flow conditions. The reduction required for BOD, COD and NH_3N is 66.7%, 39.1% and 88.5%, respectively. Improving or managing waste from the residential area should be prioritized when managing the Kulim River catchment.

The pollution of the Perai River originates from far inland. The tributaries are already affected and pass on their pollution to the Perai River. Reduction measures must already be taken there, in order to sustainably improve the water quality of the Perai River.

Author Contributions: Conceptualization, S.M.M.F.; investigation, S.M.M.F., D.N.M.S. and M.F.M.A.; methodology, D.N.M.S. and M.F.M.A.; validation, H.A.A.; formal analysis, M.F.M.A.; resources, M.Z.M.K.; data curation, S.M.M.F. and D.N.M.S.; writing—original draft preparation, S.M.M.F. and D.N.M.S.; writing—review and editing, M.F.M.A.; supervision, N.A.S.; project administration, M.Z.M.K.; funding acquisition, N.A.Z. and N.A.S. All authors have read and agreed to the published version of the manuscript.

Funding: The Ministry of Higher Education Malaysia fully funded this work and publication under the grant FRGS/1/2019/TK01/USM/03/1.

Data Availability Statement: All the data supporting reported results can be found in the references with the links, except for water quality data from DOE Malaysia. The DOE data are not publicly available due to confidential information and were solely used for study purposes. The data presented in this study are available on request from the corresponding author.

Acknowledgments: A million thanks to the Department of Environment (DOE), Malaysia, Penang GIS (PeGIS), and Department of Irrigation and Drainage (DID), Malaysia, which provided information data for generating this water quality modeling. We would also like to thank River Engineering and Urban Drainage Research Centre Universiti Sains Malaysia (REDAC, USM) for supporting the research and Article Processing Charge (APC).

Conflicts of Interest: The authors declare no conflict of interest in this work. The funder had no role in the design of the study; in the collection, analysis, or interpretation of data; in the writing of the manuscript; or in the decision to publish the results.

Abbreviations

TMDL	Total Maximum Daily Load
BOD	Biological Oxygen Demand
COD	Chemical Oxygen Demand
NH ₃ N	Ammoniacal Nitrogen
InfoWorks ICM	Integrated Catchment Modeling
MOS	Margin Of Safety
WQI	water quality index
DOE	Department of Environment
PDM	Probabilistic Distribution Model
Cmin	Minimum Moisture Store Capacity
Cmax	Maximum Moisture Store Capacity
K1	Time Constant Surface
K2	Time Constant Surface Flow Storage
DTM	Digital Terrain Model
PE	Person Equivalent
SPAN	Suruhanjaya Perkhidmatan Air Negara
WLA	Waste Load Allocations
LA	Load Allocations
FDC	Flow Duration Curve
WAC	Waste Assimilative Capacity

Appendix A

Table A1. Concentration value for parameters BOD, COD and NH₃N during dry season.

Sampling Point	Land Use	BOD (mg/L)	COD (mg/L)	NH ₃ N (mg/L)
WQ25	Forest	1	19	0.06
WQ56	Plantation	1	31	0.06
WQ21	Plantation	1	13	0.06
WQ23	Plantation	1	26	0.66
WQ57	Plantation	5	41	0.06
WQ3	Urban	8	69	0.88
WQ7A	Urban	19	78	5.96

Table A2. Concentration value for parameters BOD, COD and NH₃N during wet season.

Sampling Point	Land Use	BOD (mg/L)	COD (mg/L)	NH ₃ N (mg/L)
WQ25	Forest	1	26	0.06
WQ56	Plantation	2	29	0.06
WQ21	Plantation	1	48	0.06
WQ23	Plantation	1	19	0.06
WQ57	Plantation	1	49	0.06
WQ3	Urban	7	38	0.06
WQ7A	Urban	8	48	0.06

References

1. Ab Rashid, M.F.; Rahman, A.A.; Abdul Rashid, S.M.R. Analyzing the factors and effects of water supply disruption in Penang Island, Malaysia. *Malays. J. Soc. Sci.* **2021**, *17*, 62–75. [[CrossRef](#)]
2. Chan, N.W.; Ghani, A.A.; Samat, N.; Roy, R.; Tan, M.L.; Abdul Rahman, H. Addressing water resources shortfalls due to climate change in Penang, Malaysia. In *Water Security in Asia*; Babel, M., Haarstrick, A., Ribbe, L., Shinde, V.R., Dichtl, N., Eds.; Springer: Cham, Switzerland, 2021; pp. 239–249. [[CrossRef](#)]
3. Dehghani Darmian, M.; Hashemi Monfared, S.A.; Azizyan, G.; Snyder, S.A.; Giesy, J.P. Assessment of tools for protection of quality of water: Uncontrollable discharges of pollutants. *Ecotoxicol. Environ. Saf.* **2018**, *161*, 190–197. [[CrossRef](#)]
4. Hashemi Monfared, S.A.; Dehghani Darmian, M.; Snyder, S.A.; Azizyan, G.; Pirzadeh, B.; Azhdary Moghaddam, M. Water quality planning in rivers: Assimilative capacity and dilution flow. *Bull. Environ. Contam. Toxicol.* **2017**, *99*, 531–541. [[CrossRef](#)]

5. Jamshidi, S. An approach to develop grey water footprint accounting. *Ecol. Indic.* **2019**, *106*, 105477. [[CrossRef](#)]
6. Yang, H.; Zhao, Y.; Wang, J.-H.; Xiao, W.-H.; Jarsjö, J.; Huang, Y.; Liu, Y.; Wu, J.-P.; Wang, H.-J. Urban closed lakes: Nutrient sources, assimilative capacity and pollutant reduction under different precipitation frequencies. *Sci. Total Environ.* **2020**, *700*, 134531. [[CrossRef](#)] [[PubMed](#)]
7. Ahmadisharaf, E.; Camacho, R.A.; Zhang, H.X.; Hantush, M.M.; Mohamoud, Y.M. Calibration and validation of watershed models and advances in uncertainty analysis in TMDL studies. *J. Hydrol. Eng.* **2019**, *24*, 3119001. [[CrossRef](#)]
8. Muratoglu, A. Grey water footprint of agricultural production: An assessment based on nitrogen surplus and high-resolution leaching runoff fractions in Turkey. *Sci. Total Environ.* **2020**, *742*, 140553. [[CrossRef](#)]
9. Che Osmi, S.A.; Ishak, W.F.W.; Azman, M.A.; Ismail, A.S.; Samah, N.A. Development of water quality modelling using infowork river simulation in Malacca River, Malaysia and contribution towards Total Maximum Daily Load approach. *IOP Conf. Ser. Earth Environ. Sci.* **2018**, *169*, 012073. [[CrossRef](#)]
10. Evans, A.E.V.; Mateo-sagasta, J.; Qadir, M.; Boelee, E.; Ippolito, A. Agricultural water pollution: Key knowledge gaps and research needs. *Curr. Opin. Environ. Sustain.* **2019**, *36*, 20–27. [[CrossRef](#)]
11. Motew, M.; Booth, E.G.; Carpenter, S.R.; Chen, X.; Kucharik, C.J. The synergistic effect of manure supply and extreme precipitation on surface water quality. *Environ. Res. Lett.* **2018**, *13*, 044016. [[CrossRef](#)]
12. Risal, A.; Parajuli, P.B. Quantification and simulation of nutrient sources at watershed scale in Mississippi. *Sci. Total Environ.* **2019**, *670*, 633–643. [[CrossRef](#)] [[PubMed](#)]
13. Dambeniece-migliniece, L.; Veinbergs, A.; Lagzdins, A. The impacts of agricultural land use on nitrogen and phosphorus loads in the Mellupite catchment. *Energy Procedia* **2018**, *147*, 189–194. [[CrossRef](#)]
14. Xie, W.; Huang, Q.; He, C.; Zhao, X. Projecting the impacts of urban expansion on simultaneous losses of ecosystem services: A case study in Beijing, China. *Ecol. Indic.* **2018**, *84*, 183–193. [[CrossRef](#)]
15. Zeiger, S.J.; Hubbard, J.A. Quantifying relationships between urban land use and flow frequency of small Missouri streams. *Sci. Total Environ.* **2019**, *659*, 1008–1015. [[CrossRef](#)] [[PubMed](#)]
16. Goi, C.L. The river water quality before and during the Movement Control Order (MCO) in Malaysia. *Case Stud. Chem. Environ. Eng.* **2020**, *2*, 100027. [[CrossRef](#)]
17. Wu, H.; Oun, A.; Kline-Robach, R.; Xagorarakis, I. Microbial Pollution Characterization at a TMDL Site in Michigan: Effect of Hydrological Conditions on Pollution Loading. *J. Great Lakes Res.* **2018**, *44*, 421–427. [[CrossRef](#)]
18. Mallya, G.; Gupta, A.; Hantush, M.M.; Govindaraju, R.S. Uncertainty quantification in reconstruction of sparse water quality time series: Implications for watershed health and risk-based TMDL assessment. *Environ. Model. Softw.* **2020**, *131*, 104735. [[CrossRef](#)]
19. Moore, R.J. The PDM rainfall-runoff model. *Hydrol. Earth Syst. Sci. Discuss.* **2007**, *11*, 483–499. [[CrossRef](#)]
20. Yuan, L.; Sinshaw, T.; Forshay, K.J. Review of watershed-scale water quality and nonpoint source pollution models. *Geosciences* **2020**, *10*, 25. [[CrossRef](#)]
21. Jiang, L.; Christensen, S.W.; Bauer-Gottwein, P. Calibrating 1D hydrodynamic river models in the absence of cross-sectional geometry: A new parameterization scheme. *Hydrol. Earth Syst. Sci. Discuss.* **2021**, *25*, 6359–6379. [[CrossRef](#)]
22. Javadinejad, S.; Dara, R.; Jafary, F. Difference of rainfall-runoff models and effect on flood forecasting: A brief review. *Resour. Environ. Inf. Eng.* **2022**, *4*, 184–199. [[CrossRef](#)]
23. Sunwoo, W.; Lee, G.; Nguyen, H.H.; Shin, H.; Jun, K.S. Parameter optimization of a conceptual rainfall-runoff model in the coastal urban region. *J. Coast. Res.* **2021**, *114*, 261–265. [[CrossRef](#)]
24. Pak, H.Y.; Chuah, C.J.; Yong, E.L.; Snyder, S.A. Effects of land use configuration, seasonality and point source on water quality in a tropical watershed: A case study of the Johor River Basin. *Sci. Total Environ.* **2021**, *780*, 146661. [[CrossRef](#)] [[PubMed](#)]
25. Kamal, N.A.; Muhammad, N.S.; Abdullah, J. Scenario-based pollution discharge simulations and mapping using integrated QUAL2K-GIS. *Environ. Pollut.* **2020**, *259*, 113909. [[CrossRef](#)] [[PubMed](#)]
26. Al-mamun, A.; Alam, M.Z.; Idris, A.; Sulaiman, W.N.A. Untreated sullage from residential areas—A challenge against inland water policy in Malaysia. *Pollut. Res.* **2009**, *28*, 279–285.
27. Adnan, M.; Roslen, H.; Samsuri, S. The application of Total Maximum Daily Load (TMDL) approach in water quality assessment for the Batu Pahat River. *IOP Conf. Ser. Earth Environ. Sci.* **2022**, *1022*, 012074. [[CrossRef](#)]
28. Cleland, B.R. TMDL development from the ‘Bottom Up’—Part III: Duration curves and wet-weather assessments. *Proc. Water Environ. Fed.* **2003**, *4*, 1740–1766. [[CrossRef](#)]
29. Ma, X.; Gao, Y. Determination of Chemical Oxygen Demand for Saline. In Proceedings of the 2010 4th International Conference on Bioinformatics and Biomedical Engineering, Chengdu, China, 18–20 June 2010; pp. 1–4. [[CrossRef](#)]

Disclaimer/Publisher’s Note: The statements, opinions and data contained in all publications are solely those of the individual author(s) and contributor(s) and not of MDPI and/or the editor(s). MDPI and/or the editor(s) disclaim responsibility for any injury to people or property resulting from any ideas, methods, instructions or products referred to in the content.