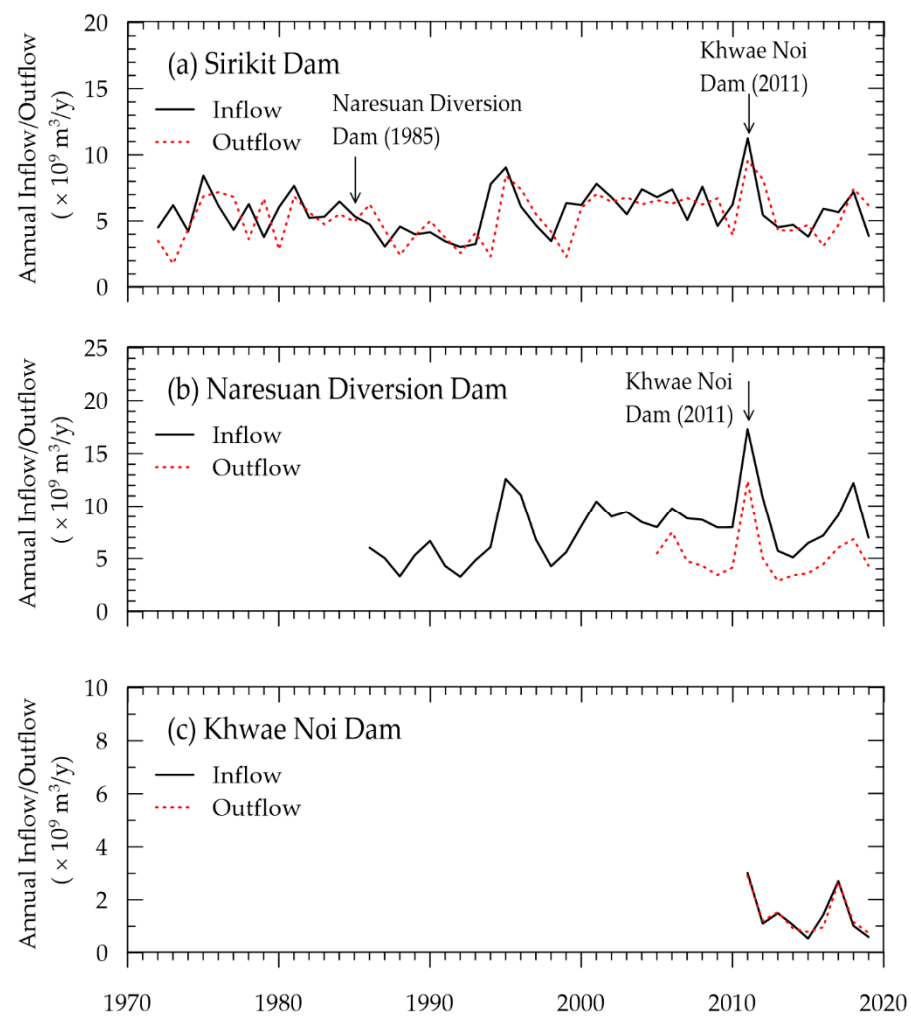
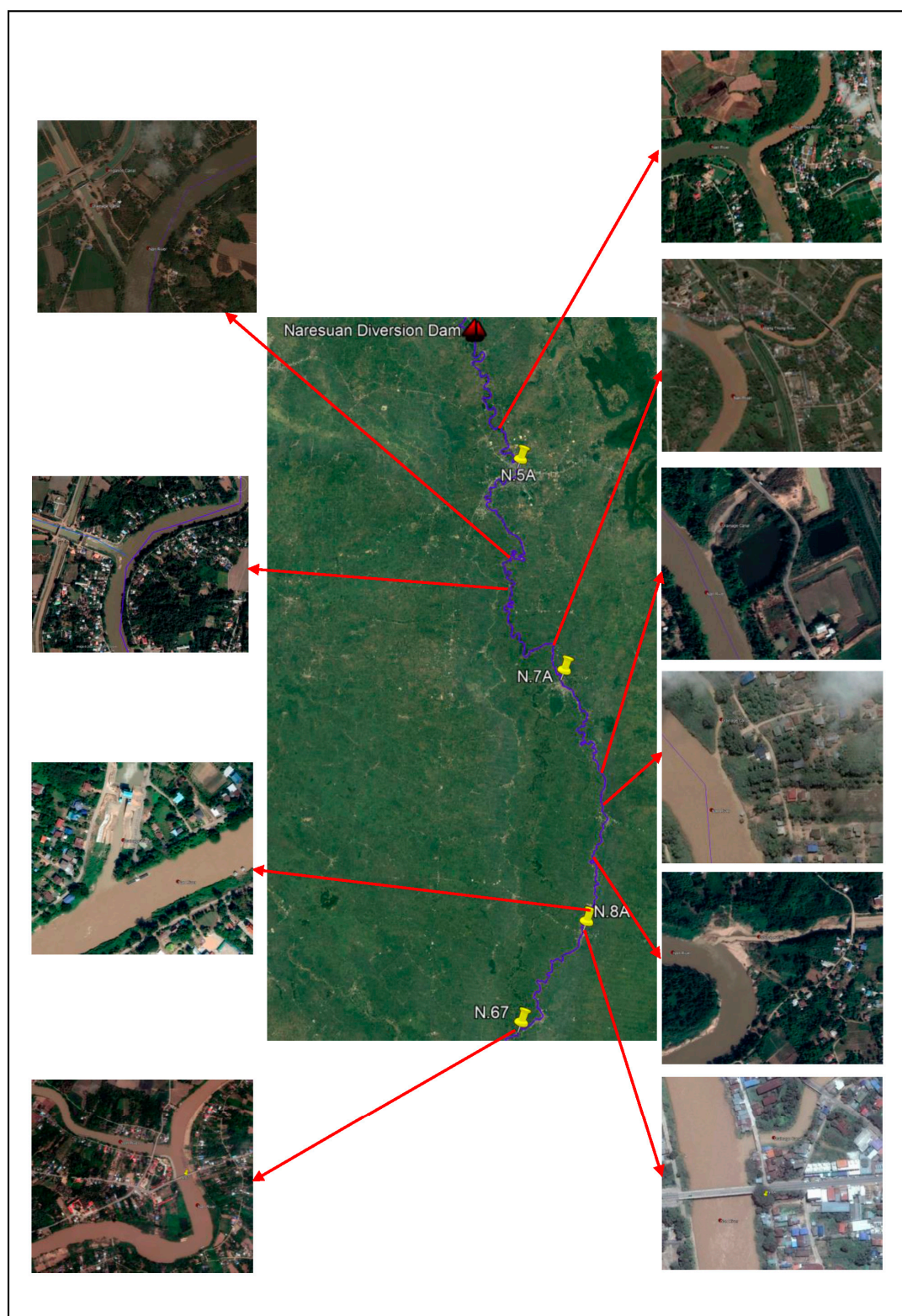


**Figure S1.** Sediment rating curves at eight RID hydrological stations: (a) N.64; (b) N.1; (c) N.13A; (d) N.5A; (e) N.7A; (f) N.8A; (g) N.67; (h) C.2.

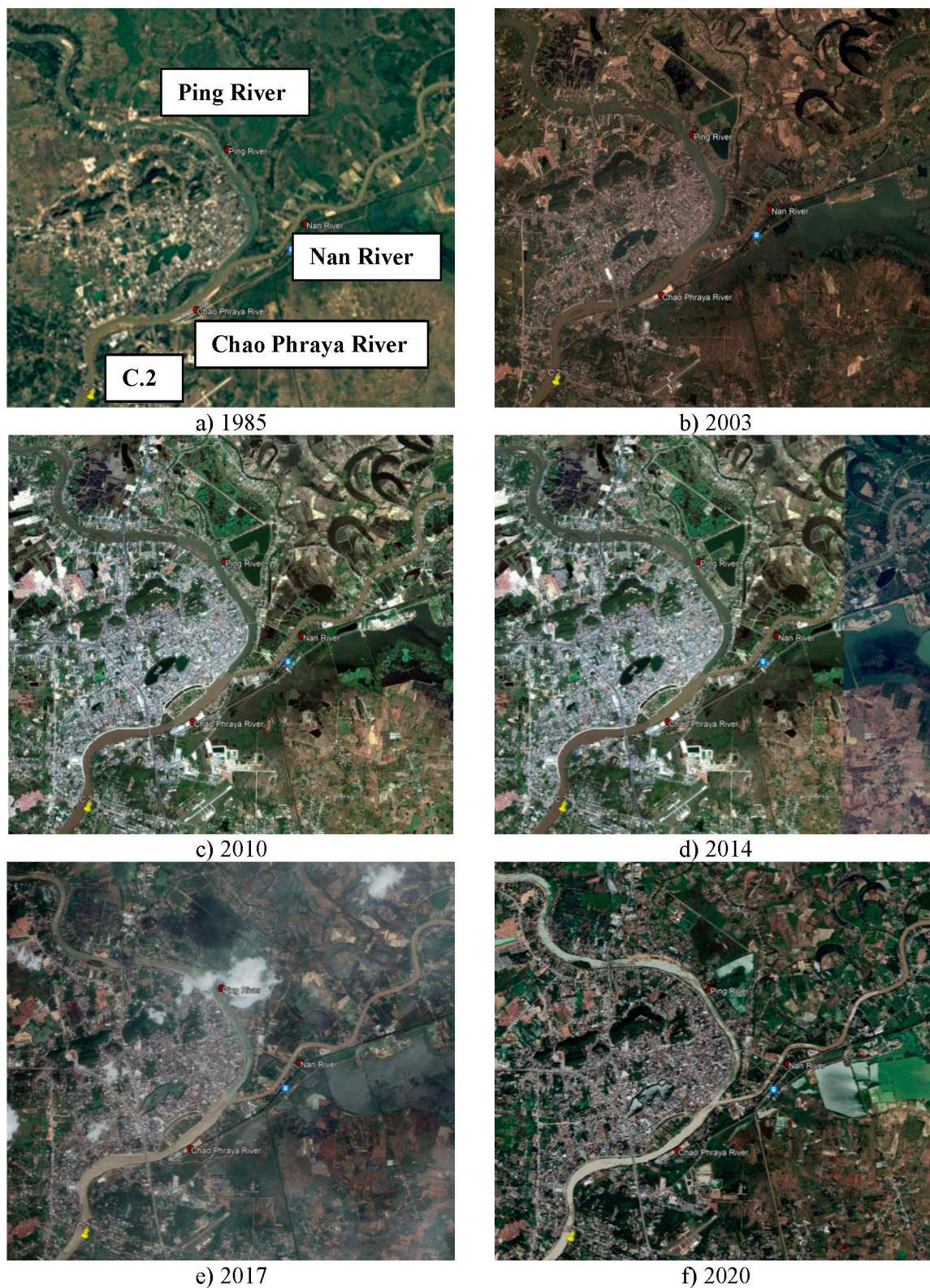


**Figure S2.** Annual inflow and outflow of dams (a) Sirikit Dam; (b) Naresuan Diversion Dam; (c) Khwae Noi Dam.



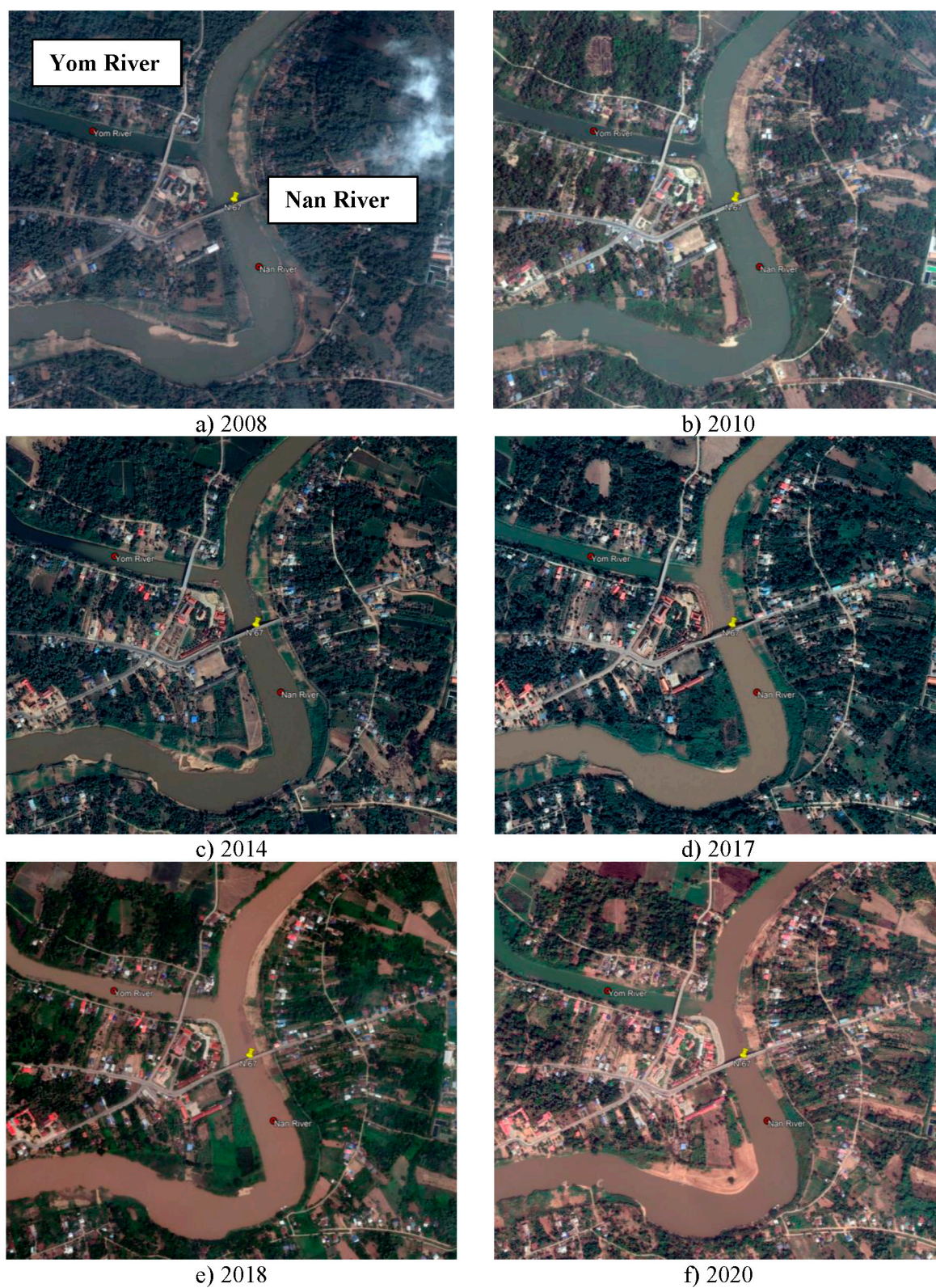
**Figure S3.** The streamflow and sediment supply into the middle and lower reaches of the Nan River from the tributaries and drainage canals.





**Figure S4.** Comparison between the concentration of sediment in the Ping and Nan Rivers: (a) 1985; (b) 2003; (c) 2010; (d) 2014; (e) 2017; (f) 2020.





**Figure S5.** Comparison between the sediment concentration in the Yom and Nan Rivers: (a) 2008; (b) 2010; (c) 2014; (d) 2017; (e) 2018; (f) 2020.