

Figure S2. Common phytoplankton observed in this study. (Scale bars: 30 μm).

A. *Aphanocapsa grevillei*, B. *Microcystis smithii*, C. *Microcystis flos-aquae*, D. *Microcystis amethystina*, E. *Phormidium tenue*, F. *Planktothrix agardhii*, G. *Kamptonema chlorinum*, H. *Anabaena sphaerica*, I. *Dolichospermum circinalis*, J. *Discostella stelligera*, K. *Cyclotella catenata*, L. *Craticula cuspidata* var. *heribaudii*

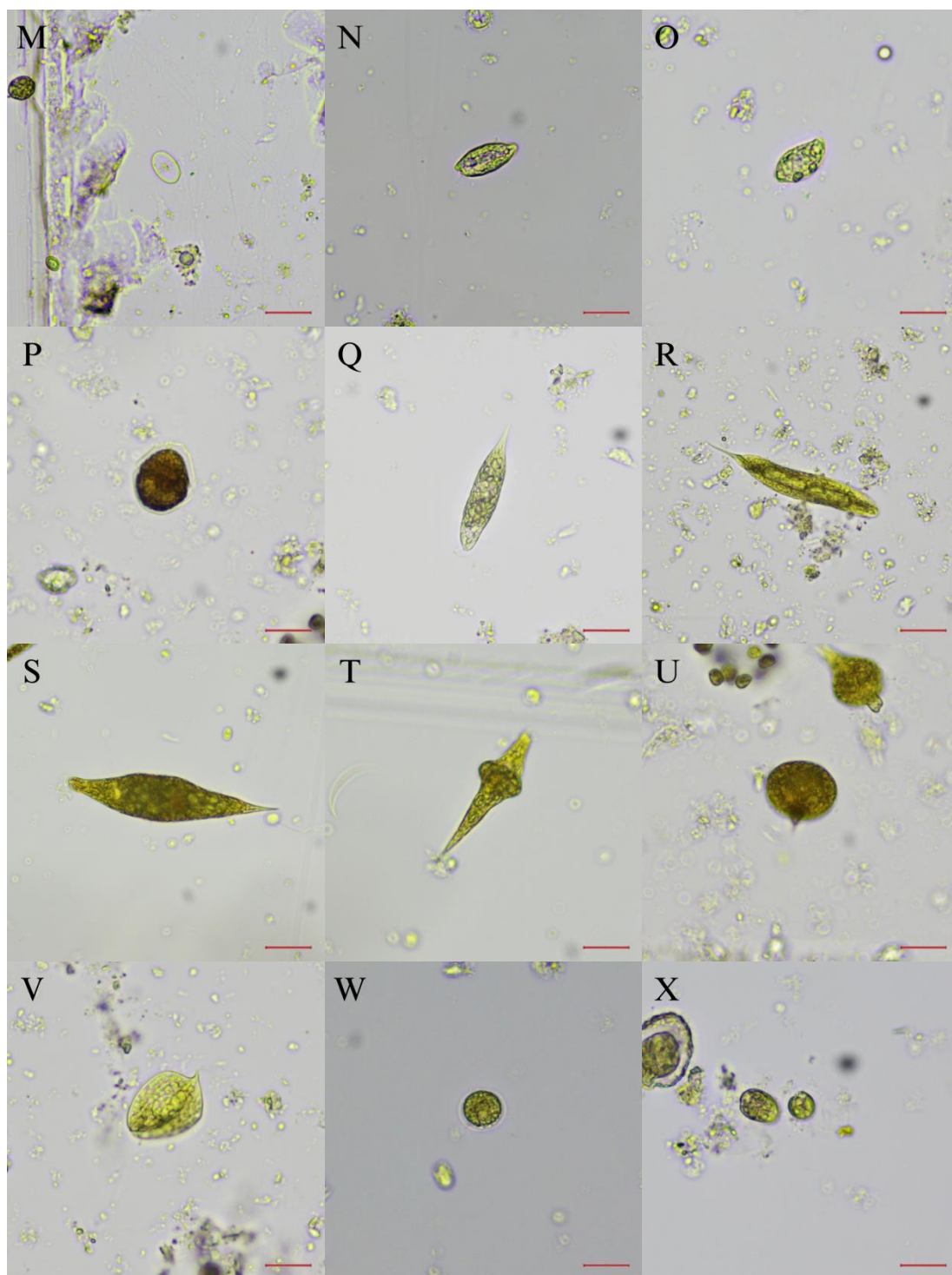


Figure S2 (continued). Common phytoplankton observed in this study. (Scale bars: 30 μm).

M. *Cocconeis placentula*, N. *Cryptomonas erosa*, O. *Cryptomonas pyrenoidifera*, P. *Naiadinium polonicum*, Q. *Euglena gracilis*, R. *Lepocinclis tripteris*, S. *Euglena multiformis*, T. *Strombomonas* sp1, U. *Lepocinclis* sp2, V. *Phacus anomalus*, W. *Chlamydomonas simplex*, X. *Chlamydomonas* sp1.

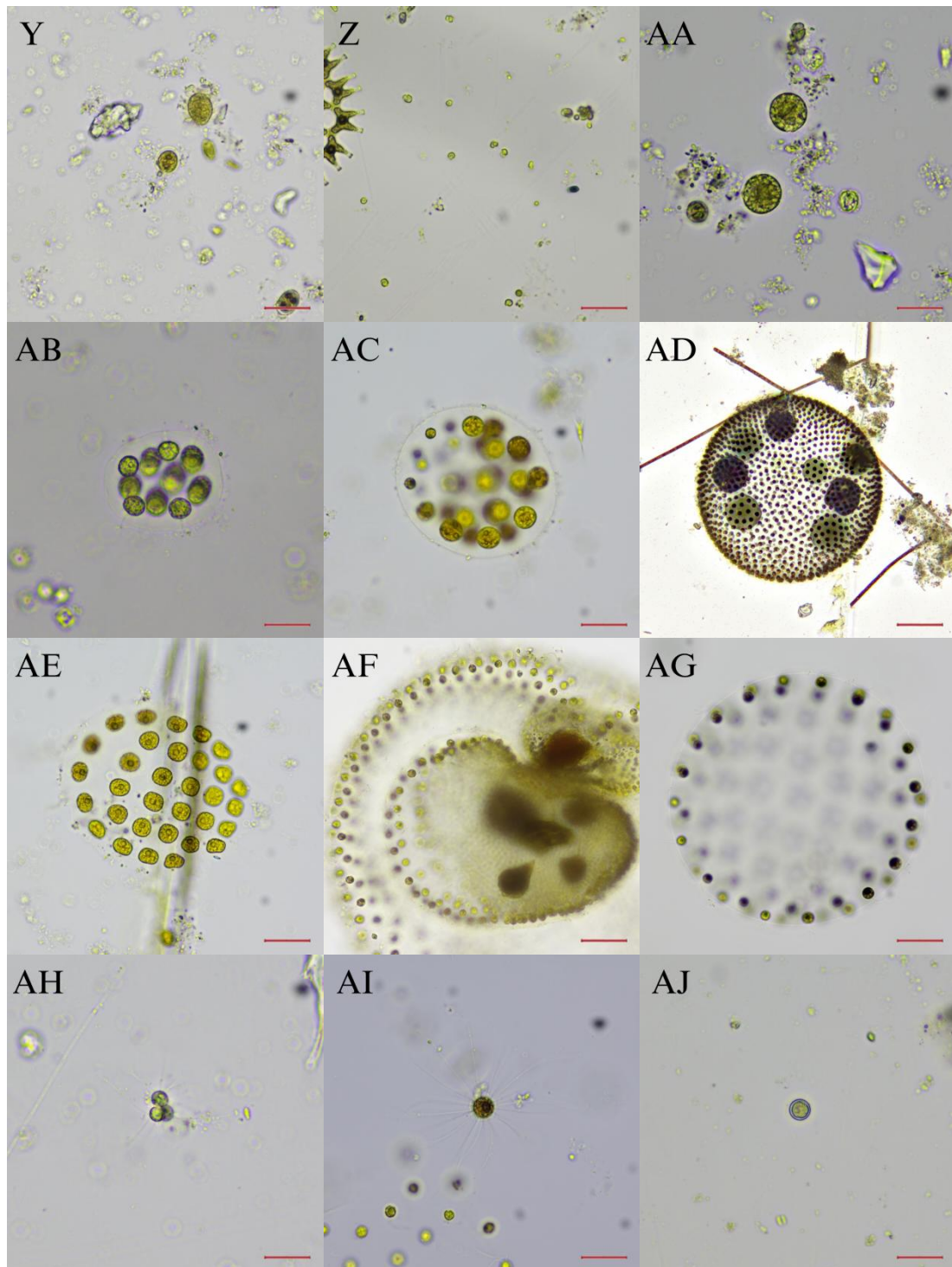


Figure S2 (continued). Common phytoplankton observed in this study. (Scale bars: 30 μ m).

Y. *Chlamydomonas* sp4, Z. *Chlamydomonas* sp7, AA. *Chlamydomonas* sp8, AB. *Eudorina elegans*, AC. *Pleodorina californica*, AD. *Volvox globator*, AE. *Volvox* sp1, AF. *Volvox* sp3, AG. *Volvox* sp4, AH. *Golenkinia radiata*, AI. *Golenkinia* sp1, AJ. *Chlorella vulgaris*.

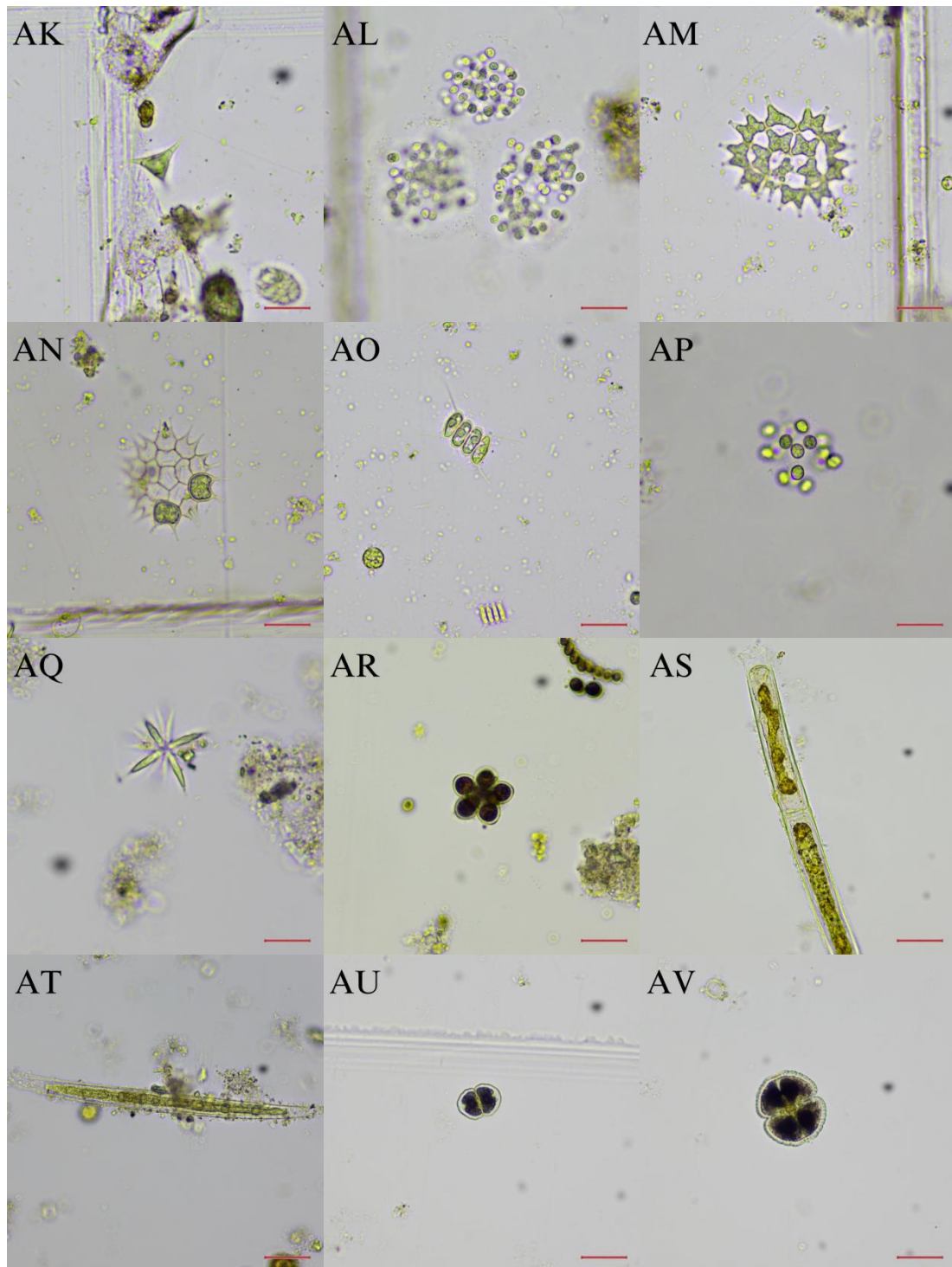


Figure S2 (continued). Common phytoplankton observed in this study. (Scale bars: 30 μ m).

AK. *Tetraëdron trigonum*, AL. *Mucidosphaerium pulchellum*, AM. *Pediastrum biradiatum*, AN. *Pediastrum boryanum* var. *longicorne*, AO. *Desmodesmus communis*, AP. *Westella botryoides*, AQ. *Actinastrum fluviatile*, AR. *Coelastrum* sp1, AS. *Microspora* sp2, AT. *Closterium gracile*, AU. *Cosmarium laeve*, AV. *Cosmarium vexatum*.

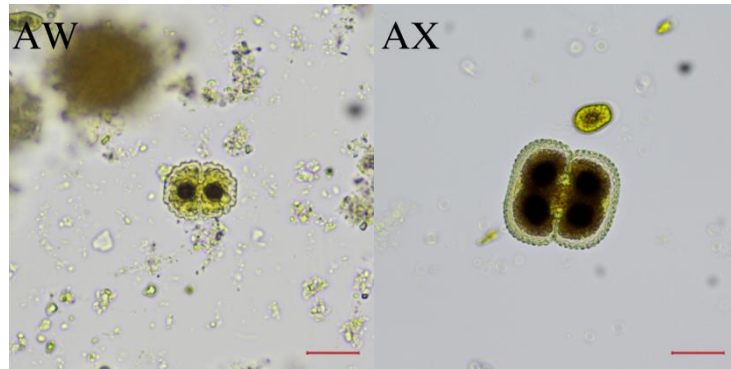


Figure S2 (continued). Common phytoplankton observed in this study. (Scale bars: 30 μm).

AW. *Cosmarium formosulum*, AX. *Cosmarium quadrum*.