



Figure S1. The detected vegetation map from the SVM classifier with WV-2 image acquired on 12 February 2017.

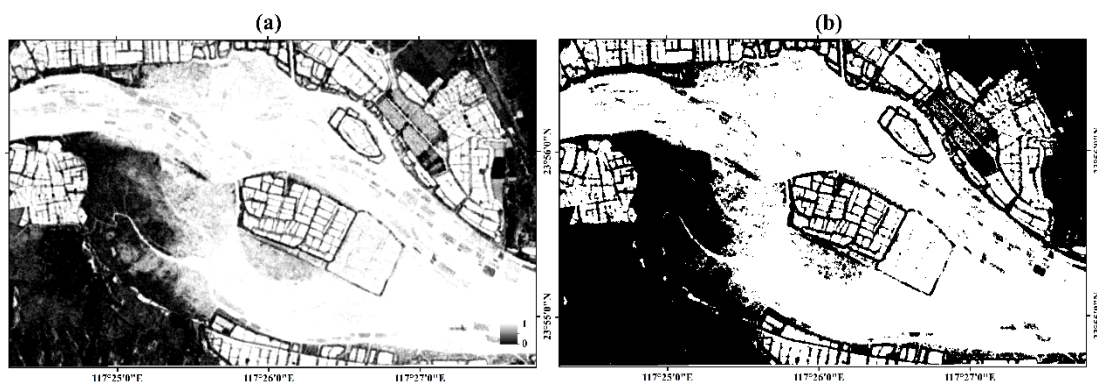


Figure S2. The inundation frequency map (a) and the inundation frequency mask (b).

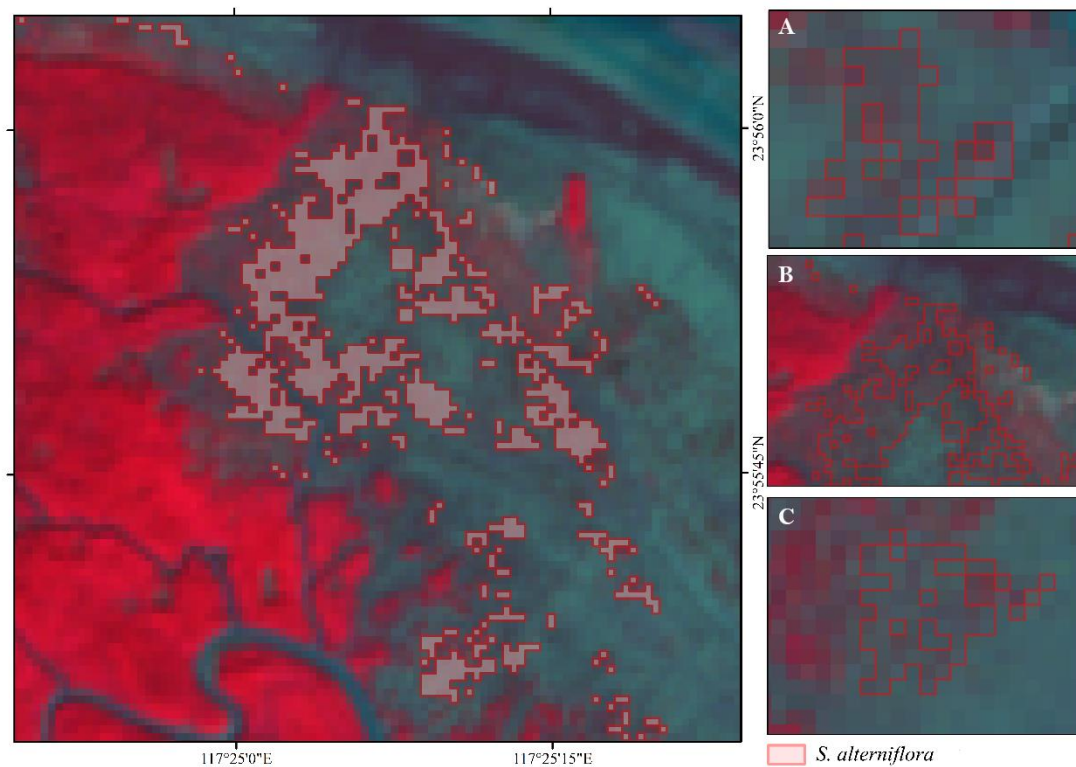


Figure S3. The *S. alterniflora* distribution results derived from Sentinel-1/2 imagery on December 29, 2023 overlaid on the Sentinel-2A satellite imagery acquired on December 29, 2023. A, B and C on the right are the enlarged views of the figure on the left.