

Short Note

Mussel Spat Ropes Assist Redfin Bully *Gobiomorphus huttoni* Passage through Experimental Culverts with Velocity Barriers

Jonathan D. Tonkin^{1,*†}, Liam A.H. Wright^{1,2} and Bruno O. David³

¹ Department of Marine and Environmental Management, Bay of Plenty Polytechnic, Private Bag 12001, Tauranga 3143, New Zealand

² Scion, Private Bag 3020, Rotorua 3046, New Zealand; E-Mail: liam.wright@scionresearch.com

³ Waikato Regional Council, P.O. Box 4010, Hamilton East 3216, New Zealand; E-Mail: bruno.david@waikatoregion.govt.nz

[†] Present Address: Department of Environmental Science, Xi'an Jiaotong-Liverpool University, 111 Ren'ai Rd, Dushu Lake Higher Education Town, Suzhou Industrial Park, Suzhou 215123, China

* Author to whom correspondence should be addressed; E-Mail: jonathan.tonkin@xjtlu.edu.cn; Tel.: +86-512-8188-0471; Fax: +86-512-8816-1000.

Received: 20 July 2012; in revised form: 24 August 2012 / Accepted: 4 September 2012 /

Published: 14 September 2012

Abstract: The application of mussel spat rope for enabling the passage of redfin bully *Gobiomorphus huttoni* through culverts, which create velocity barriers, was trialled in the laboratory. No fish were able to access the un-roped control pipes whereas 52% successfully negotiated the pipes in the rope treatments. The success of fish ascending treatment pipes suggests mussel spat rope may be effective for enabling the passage of this and other similar fish species through otherwise impassable culverts with velocity barriers.

Keywords: diadromy; fish passage; migratory; remediation; retrofit

1. Introduction

One of the greatest human-induced pressures on freshwater fish worldwide is the disruption of river connectivity, which can affect passage for many migratory species [1–3]. Culverts pose one such connectivity barrier, and continue to be constructed in ways that affect fish passage worldwide [4,5]. Aside from disrupting downstream migrations through behavioural deterrents [6,7], culvert pipes can

restrict upstream fish passage through perching [8] and/or by creating a velocity barrier if within-pipe water velocity is beyond the swimming capability of the species seeking upstream passage [9,10]. In addition to perching and high within-pipe velocities, passage success can also be strongly influenced by culvert length and/or gradient, and various interacting combinations of these factors [11,12].

While provision of fish passage through culverts has been investigated with a variety of methods, e.g., [13,14], designs or retrofits can be expensive and are often overlooked in favour of less costly options [4]. Common designs adopted in larger culverts involve the installation of internal weirs and/or baffles which reduce water velocities and provide resting areas for fish, e.g., [13]. This is not possible in long, small diameter culverts because of logistical issues related to accessing internal sections for retrofitting, maintenance concerns, and/or the potential to compromise hydraulic capacity [15].

In a recent study, David *et al.* [8] found that upstream migratory post-larval banded kokopu *Galaxias fasciatus* (Gray 1842) were successful in climbing vertical mussel spat ropes, overcoming a simulated perched culvert in laboratory trials. It was concluded that mussel spat rope may offer a cost effective solution for enabling the passage of “climbing” fish species past and through perched culverts. Within culverts, ropes may facilitate fish passage for “climbing” species by increasing the potential wetted margin [16], and for “swimming” species by reducing barrel water velocities and increasing hydraulic complexity [17]. In this laboratory study we investigate the potential for mussel spat ropes to improve passage of redfin bully *Gobiomorphus huttoni* (Ogilby 1894) of various life-stage through culvert pipes where uniform barrel velocities and pipe gradient were expected to restrict passage for this species.

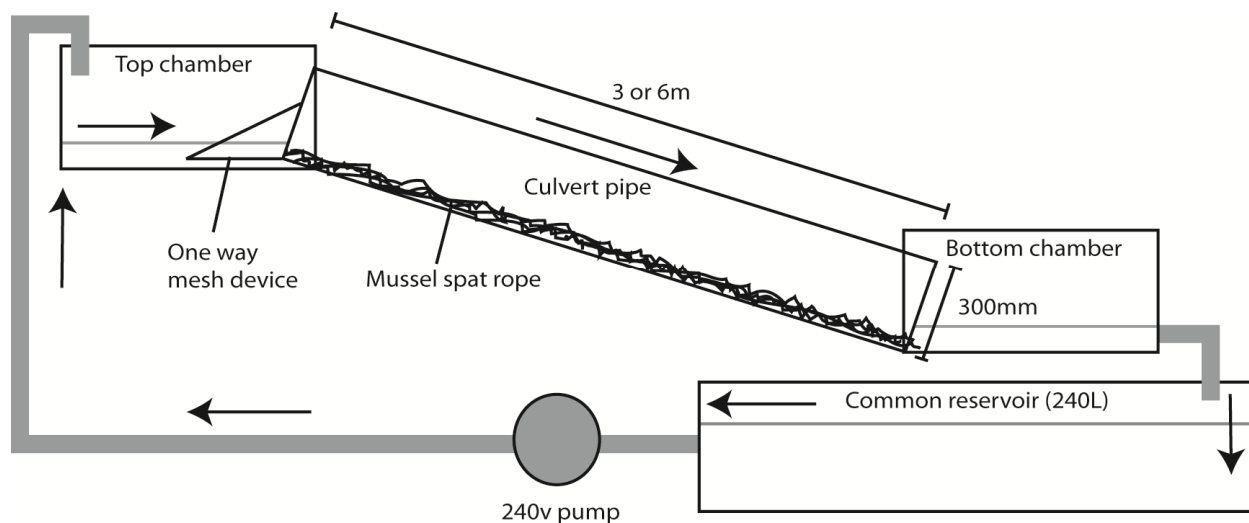
2. Methods

G. huttoni (N = 150, size = 24–73 mm), a widespread amphidromous New Zealand eleotrid fish, were sourced (August 2011) from a 200 m stretch of the Uretara Stream, Katikati, Bay of Plenty, New Zealand (37°57' S, 175°91' E). All fish were captured with a battery powered backpack electric fishing machine (Kainga EFM300, NIWA Instrument Systems, Christchurch, New Zealand). Fish were held for two weeks prior to running trials and were held within a 900 L holding tank for the duration of the trials and fed at the end of each day.

An experimental, simulated culvert system (Figure 1) was constructed in the laboratory consisting of two trial setups of different lengths of 350 mm diameter culvert pipe; 3 m and 6 m. Although there are a range of culvert pipe sizes used in field situations (often larger than those used here), pipes of this size and smaller are common across New Zealand [18]. Each trial ran on a pair-wise basis consisting of two pipes; a control pipe (no rope) and a treatment pipe, which was fitted with two parallel, equal lengths of mussel spat rope (used for the collection of mussel spat for aquaculture). The mussel spat rope used, “Super Xmas Tree” (14 mm core, Donaghys Industries, Christchurch, New Zealand), was identical to that used by David *et al.* [8]. While strands of rope project from the inner core increasing the total surface area, the inner core of individual ropes represent 0.16% of the internal area of each pipe. Each pipe conveyed water from an upper chamber down a 10° slope to a lower chamber. Two rocks were placed in each of the bottom chambers to provide resting areas for fish. A cone-shaped mesh device was installed at the top of each culvert to retain any fish that had successfully ascended the setup.

A re-circulating system driven by a 240 V Onga Pump (Model 413, Pentair Water New Zealand Ltd., Rongotea, New Zealand) delivered water from a common 240 L reservoir, to the top of each roped and un-roped trial chamber. Flow volume was equivalent and consistent between control and treatment for each trial (3 m trial = $0.9 \pm 0.008 \text{ L s}^{-1}$, $t = 0.49$, $p = 0.63$; 6 m trial = $1.04 \pm 0.02 \text{ L s}^{-1}$, $t = 0$, $p = 1$) and throughout all replicates. A constant depth of ~90–100 mm was maintained in each bottom chamber by recycling water from the lower chambers through a 50 mm drainage outlet at a consistent point on all four chambers, and re-delivering it to the common reservoir. At the end of each day reservoir water was flushed with clean, treated, tap water, and left at least 12 hour before the next trial. Velocities were assessed by measuring the time taken for dye to travel the length of pipes and converted to m s^{-1} , which provides a simple index of velocity within the pipe and enables comparison between treatments. Water temperatures were unregulated throughout the trial and were measured at the beginning and end of each trial in the bottom chambers using an Eutech Instruments ECScan pocket meter.

Figure 1. Schematic diagram of experimental culvert system assessing the effects of mussel spat rope on passage success of redbfin bully *Gobiomorphus huttoni*. Figure illustrates one of the treatment systems with mussel spat rope attached. Each 3 or 6 m length was paired with treatment (rope) and control systems which were run through trials without rope. Arrows indicate direction of flow.



Two replicates were run each day (am/pm) between 7 am and 5 pm, each running for three hours. Twenty trials ($10 \text{ m} \times 3 \text{ m}$; $10 \text{ m} \times 6 \text{ m}$) were completed over a three-week period, from late August to mid-September 2011. Sixty fish (30 individuals each of control or treatment) of variable size were used in each replicate, having been randomly selected from the common holding tank. Fish were used once per day. Fish were recorded either as reaching the top, being in ascent, or remaining in the bottom chamber at the end of each three-hour trial. To assess whether fish size was important for passage, the total length of each fish in their respective position post-trial (*i.e.*, bottom, in ascent, top) was measured for the 6 m trials.

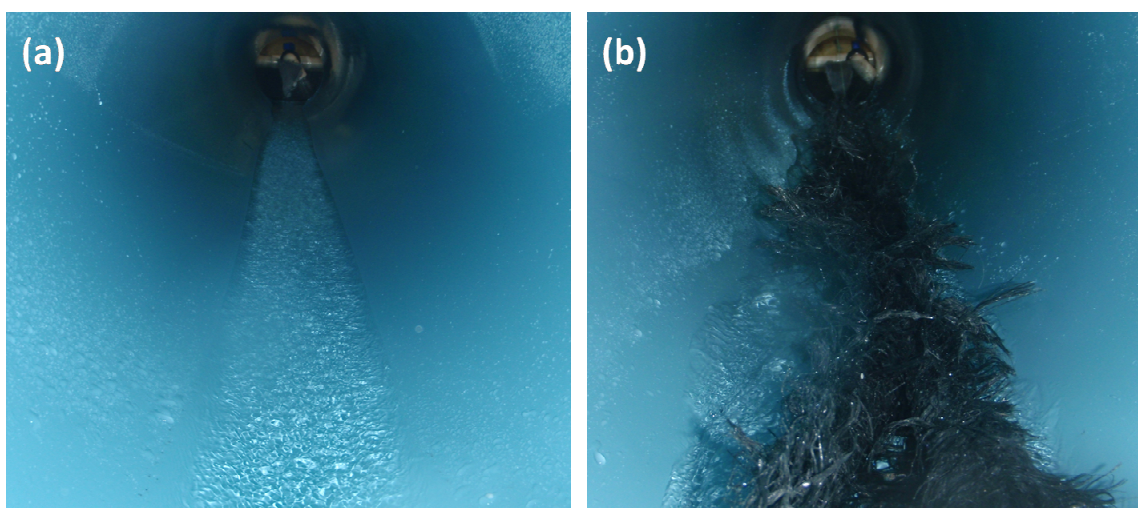
All statistical analyses were carried out on raw data after testing for normality (Shapiro-Wilks: $W = 0.97$, $p = 0.12$). Where displayed, means are accompanied by one standard error. One-way

ANOVA was performed in R 2.13.1 [19] to determine differences in the number (all trials) and size of fish (6 m trials) between the three positions post-trial. Tukey's HSD criterion was used post-hoc to assess pair-wise differences between the three positions. Linear regression was performed in R 2.13.1 [19] to assess whether temperature changed over the duration of the trial period. Two-tailed t-tests were performed on treatment-pipe data to compare ascent success and temperature between 3 m and 6 m trials.

3. Results and Discussion

No fish successfully ascended, or were found to be in ascent of the un-roped (control) 3 m or 6 m culverts, compared to varying success rates in the treatment pipes. High water velocity was assumed to be the main factor limiting passage success. Mean water velocities were slower in the pipes fitted with mussel spat rope ($0.68 \pm 0.03 \text{ ms}^{-1}$) than without ($1.76 \pm 0.04 \text{ ms}^{-1}$; $t = 22.44$, $p < 0.0001$) and clear differences were visually evident of the effect of mussel spat rope on the hydrodynamics between the two treatments (Figure 2). Observations during trials indicated that fish were unable to sustain prolonged bursts of swimming in pipes without ropes. These findings agree with previous work which suggested that in non-retrofitted situations, water velocities were the primary factor limiting the successful ascent of inanga *Galaxias maculatus* (Jenyns 1842) and *G. huttoni* [16]. Conversely, in rope treatments, fish were easily able to access the pipes and at times could be observed resting at the base of the pipe and beneath the ropes prior to their ascent. The lower velocities exiting roped culverts may also reduce potential for downstream scouring which typically leads to culvert perching [8].

Figure 2. Different flow hydrodynamics between (a) control (no rope); and (b) treatment (rope) pipes, used to test the effect of mussel spat rope on redfin bully *Gobiomorphus huttoni* passage through simulated laboratory culverts.



The mean proportion of fish reaching the top chamber for the combined (3 m and 6 m) roped trials was greater than the proportion of fish found either in ascent or remaining in the bottom chamber (Table 1), which Tukey's HSD criterion indicated were not different from each other. There was a significantly greater success rate of fish passage in 6 m (0.69 ± 0.09) compared to 3 m (0.35 ± 0.11) roped trials ($t = -2.36$, $p = 0.03$), which was likely related to higher ambient and water temperatures in the 6m trials ($t = -2.44$, $p = 0.025$) as this increased over the study period ($F_{1,18} = 14.26$, $p = 0.001$,

$R^2 = 0.44$, $y = 12.9 + 0.13x$). Previous research has shown that temperatures below 12 °C can reduce the migratory activity of fish compared to warmer water around 16 °C [20]. Although fish learning in association with temperature may also have contributed to higher passage success in 6m roped trials in the current study, our design did not allow us to differentiate the relative importance of these two factors. Nevertheless, exploring and controlling each of these factors would be an interesting and informative area for future research.

Table 1. Mean (± 1 Standard Error) proportion of redbfin bully *Gobiomorphus huttoni* in either the top chamber, ascending the culvert, or in the bottom chamber of 3 m and 6 m treatment pipes post trial, in a simulated culvert system with mussel spat ropes installed (n = 10 replicates of each length; 30 fish per replicate; control and treatment run for every replicate).

Pipe length	Top	On rope	Bottom	F	p	Degrees of freedom
3 m	0.35 (0.11)	0.12 (0.03)	0.52 (0.11)	4.62	0.02	2, 27
6 m	0.69 (0.09)	0.26 (0.07)	0.05 (0.02)	24.45	<0.0001	2, 27
Combined	0.52 (0.08)	0.26 (0.04)	0.28 (0.08)	6.26	0.004	2, 57

Note: no fish in any trial were found outside the bottom chamber for control pipes.

Irrespective of the mechanism(s) allowing passage success between roped trials, it is important to recognise that not a single bully was able to successfully negotiate either the 3 or 6 m culverts without ropes present. Assumptions were made prior to the trial that re-use of *G. huttoni* would not influence ascent success based on results of a similar trial involving re-use of this species on five occasions [16]. Limited evidence from this study suggests “learning” may have been a factor in their success but this was confounded by a correlation with temperature. There was no evidence to indicate an effect of fish length [length (mm): top = 48.39 ± 0.41 , middle = 46.99 ± 0.54 , bottom = 49.95 ± 1.41 ; $F_{2,326} = 1.9$, $p = 0.15$]. The locomotory mode of *G. huttoni* appears to be dependent on gradient [16], and larger fish in general tend to swim rather than climb when ascending high velocity/gradient water flows [21,22]. Although observations of swimming mode were not possible, successful ascents of this fish throughout the size range used (24–73 mm) indicates that culverts fitted with spat ropes can facilitate passage for both migrant juveniles and non-migrant adults. However, more research would be required to assess whether these ropes would assist larger migratory fish such as adult salmonids.

When designing culverts, it is important to consider the passage requirements and locomotory style of a broad range of species [23]. If retrofitting of culverts is required to provide for fish passage, the installation of mussel spat ropes may offer a relatively inexpensive solution compared to other methods such as baffles [8,15], particularly in long, difficult to access culverts such as those commonly found in urban areas. Ropes also have a low hydrodynamic profile which may be advantageous in situations where culvert capacity may be compromised by the retrofitting of other flow roughening devices [15]. A recent field trial run over three years in a high energy stream on New Zealand’s east coast indicated no evidence of culvert blockage or retention of debris by ropes installed there [17].

River fragmentation resulting from inappropriate crossing designs is a widespread international problem for diadromous fish [3,4]. The high success of *G. huttoni* of varying size (and thus life-stage) through laboratory culverts with mussel spat rope present compared to no success in pipes without

rope, suggests mussel spat rope could potentially be utilised by fish with varying locomotory styles. Trials assessing different configurations of rope (such as knotting), pipe length and gradient on passage of other swimming species would be a fruitful area for future research, as well as field testing their application in long culverts. These findings, along with those of David *et al.* [8] and David and Hamer [17], imply that mussel spat ropes could be an effective and cost effective tool for improving passage through both perched and non-perched culvert barriers in New Zealand and worldwide.

Acknowledgements

Thanks are extended to Paul Warren and Daniel Sharp for assistance in designing and setting up the experiment. This research was supported by a Bay of Plenty Polytechnic Taiorangahau research grant and carried out under a Bay of Plenty Polytechnic Animal Ethics permit. We also thank the Ministry of Fisheries and Department of Conservation for providing a fish transfer permit. Three anonymous reviewers improved this manuscript.

References

1. Joy, M.K.; Death, R.G. Control of freshwater fish and crayfish community structure in Taranaki, New Zealand: Dams, diadromy or habitat structure? *Freshw. Biol.* **2001**, *46*, 417–429.
2. Fausch, K.D.; Torgersen, C.E.; Baxter, C.V.; Li, H.W. Landscapes to riverscapes: Bridging the gap between research and conservation of stream fishes. *Biosci.* **2002**, *52*, 483–498.
3. Roscoe, D.W.; Hinch, S.G.; Cooke, S.J.; Patterson, D.A. Fishway passage and post-passage mortality of up-river migrating sockeye salmon in the Seton River, British Columbia. *River Res. Appl.* **2011**, *27*, 693–705.
4. Gibson, R.J.; Haedrich, R.L.; Wernerheim, C.M. Loss of fish habitat as a consequence of inappropriately constructed stream crossings. *Fisheries* **2005**, *30*, 10–17.
5. Belford, D.A.; Gould, W.R. An evaluation of trout passage through six highway culverts in Montana. *North Am. J. Fish. Manag.* **1989**, *9*, 437–445.
6. Kemp, P.S.; Gessel, M.H.; Williams, J.G. Response of downstream migrant juvenile Pacific salmonids to accelerating flow and overhead cover. *Hydrobiol.* **2008**, *609*, 205–217.
7. Kemp, P.S.; Williams, J.G. Response of migrating chinook salmon (*Oncorhynchus tshawytscha*) smolts to in-stream structure associated with culverts. *River Res. Appl.* **2008**, *24*, 571–579.
8. David, B.O.; Hamer, M.P.; Collier, K.J. Mussel spat ropes provide passage for banded kokopu (*Galaxias fasciatus*) in laboratory trials. *N. Z. J. Mar. Freshw. Res.* **2009**, *43*, 883–888.
9. Boubée, J.A.T.; Jowett, I.G.; Nichols, S.; Williams, E.K. *Fish Passage at Culverts: A Review with Possible Solutions for New Zealand Indigenous Species*; New Zealand Department of Conservation: Wellington, New Zealand, 1999.
10. Larinier, M. Fish passage through culverts, rock weirs and estuarine obstructions. *Bull. Fr. Peche Piscic.* **2002**, *364*, 119–134.
11. Haro, A.; Castro-Santos, T.; Noreika, J.; Odeh, M. Swimming performance of upstream migrant fishes in open-channel flow: A new approach to predicting passage through velocity barriers. *Can. J. Fish. Aquat. Sci.* **2004**, *61*, 1590–1601.

12. Castro-Santos, T. Quantifying the combined effects of attempt rate and swimming capacity on passage through velocity barriers. *Can. J. Fish. Aquat. Sci.* **2004**, *61*, 1602–1615.
13. Macdonald, J.I.; Davies, P.E. Improving the upstream passage of two galaxiid fish species through a pipe culvert. *Fish. Manag. Ecol.* **2007**, *14*, 221–230.
14. Doehring, K.; Young, R.G.; McIntosh, A.R. Factors affecting juvenile galaxiid fish passage at culverts. *Mar. Freshw. Res.* **2011**, *62*, 38–45.
15. Stevenson, C.; Baker, C.F. *Fish Passage Guidelines for the Auckland Region—2009*; Auckland Regional Council Technical Publication 2009-084; Auckland Regional Council: Auckland, New Zealand, 2009.
16. Baker, C.F.; Boubée, J.A.T. Upstream passage of inanga *Galaxias maculatus* and redfin bullies *Gobiomorphus huttoni* over artificial ramps. *J. Fish Biol.* **2006**, *69*, 668–681.
17. David, B.O.; Hamer, M.P. Remediation of a perched stream culvert with ropes improves fish passage. *Mar. Freshw. Res.* **2012**, *63*, 440–449.
18. Kelly, J.; Collier, K.J. *Assessment of Fish Passage within Selected Districts of the Waikato Region*; Environment Waikato Technical Report 2007/03; Environment Waikato Regional Council: Hamilton, New Zealand, 2007.
19. R Development Core Team. *R: A Language and Environment for Statistical Computing*; R Foundation of Statistical Computing: Vienna, Austria, 2011.
20. August, S.; Hicks, B. Water temperature and upstream migration of glass eels in New Zealand: Implications of climate change. *Environ. Biol. Fishes* **2008**, *81*, 195–205.
21. Blake, R. *Fish Locomotion*; Cambridge University Press: Cambridge, UK, 1983.
22. Mitchell, C.P. Swimming performances of some native freshwater fishes. *N. Z. J. Mar. Freshw. Res.* **1989**, *23*, 181–187.
23. Williams, J.G.; Armstrong, G.; Katopodis, C.; Larinier, M.; Travade, F. Thinking like a fish: A key ingredient for development of effective fish passage facilities at river obstructions. *River Res. Appl.* **2012**, *28*, 407–417.