

Supplementary Materials

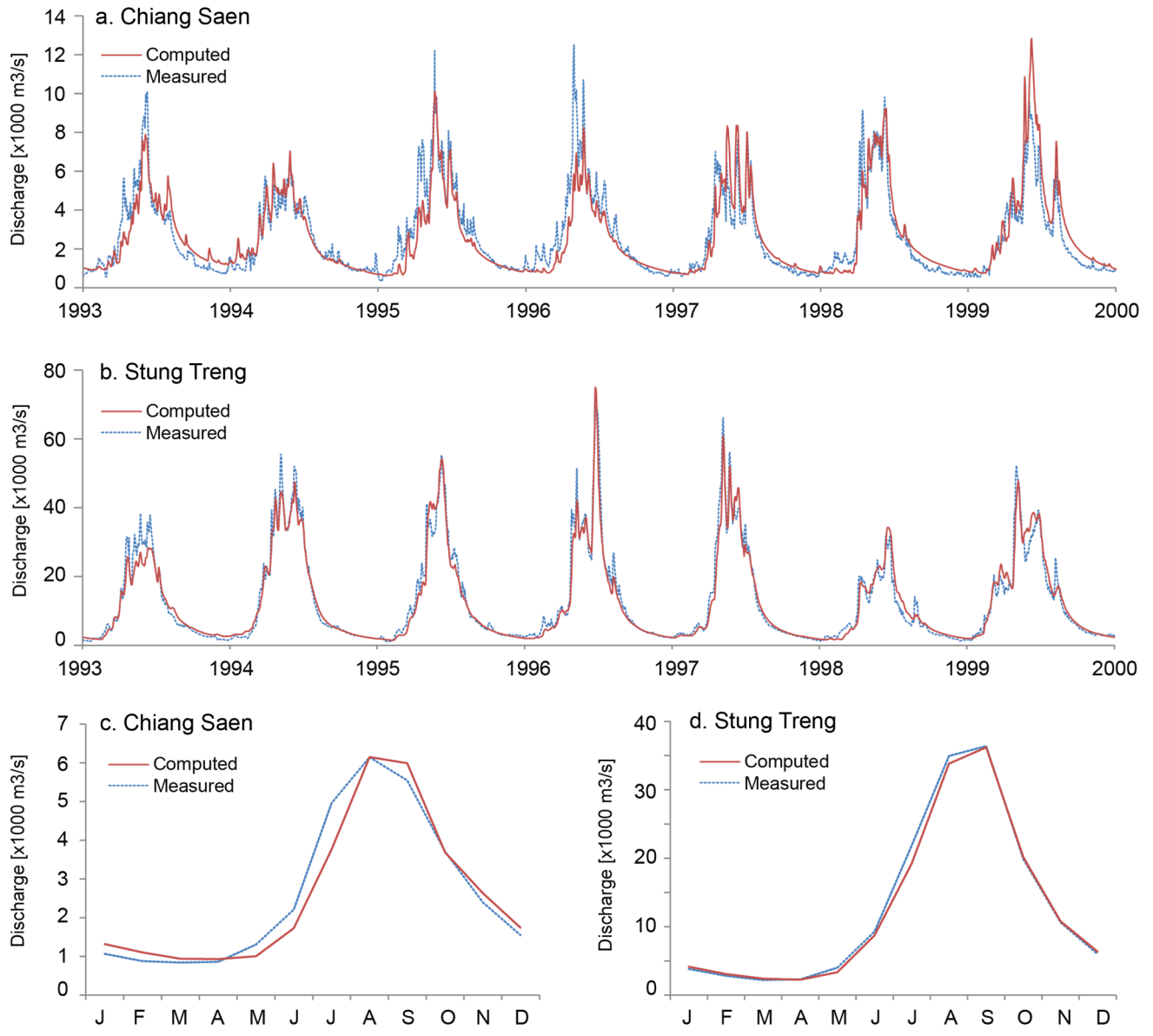


Figure S1. Validation results of the VMod hydrological model with validation period 1993–1999. **(a)** Daily discharge at Chiang Saen; **(b)** daily discharge at Stung Treng; **(c)** monthly average discharge at Chiang Saen; and **(d)** monthly average discharge at Stung Treng [38].

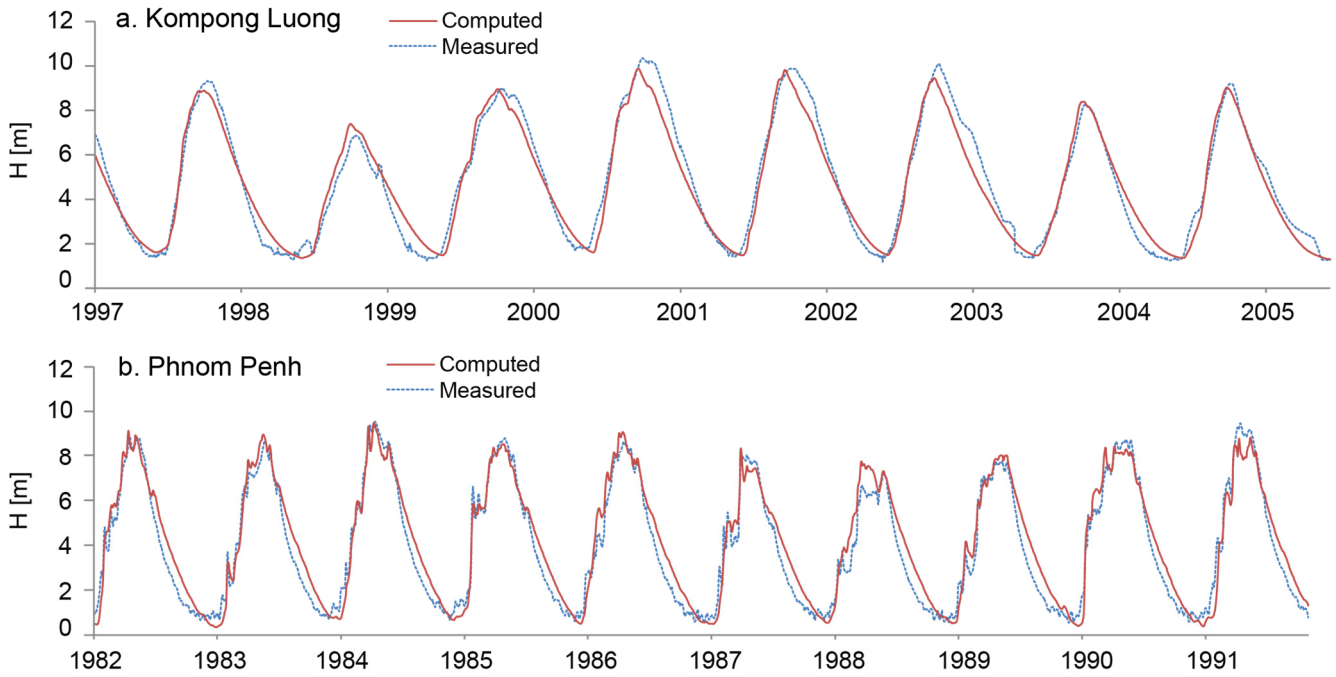


Figure S2. Validation results of the EIA 3D model: measured and computed water levels at Kampong Luong and Phnom Penh, computation with VMod baseline scenario inflow data.

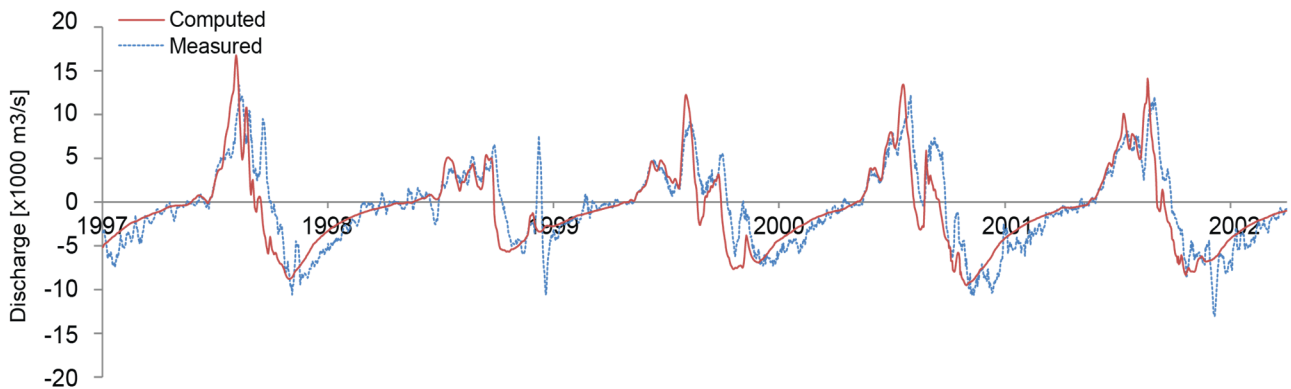


Figure S3. Validation results of the EIA 3D model: computed and 3-day averaged measured flow at Prek Dam for years 1997–2002.