

Supplement S3

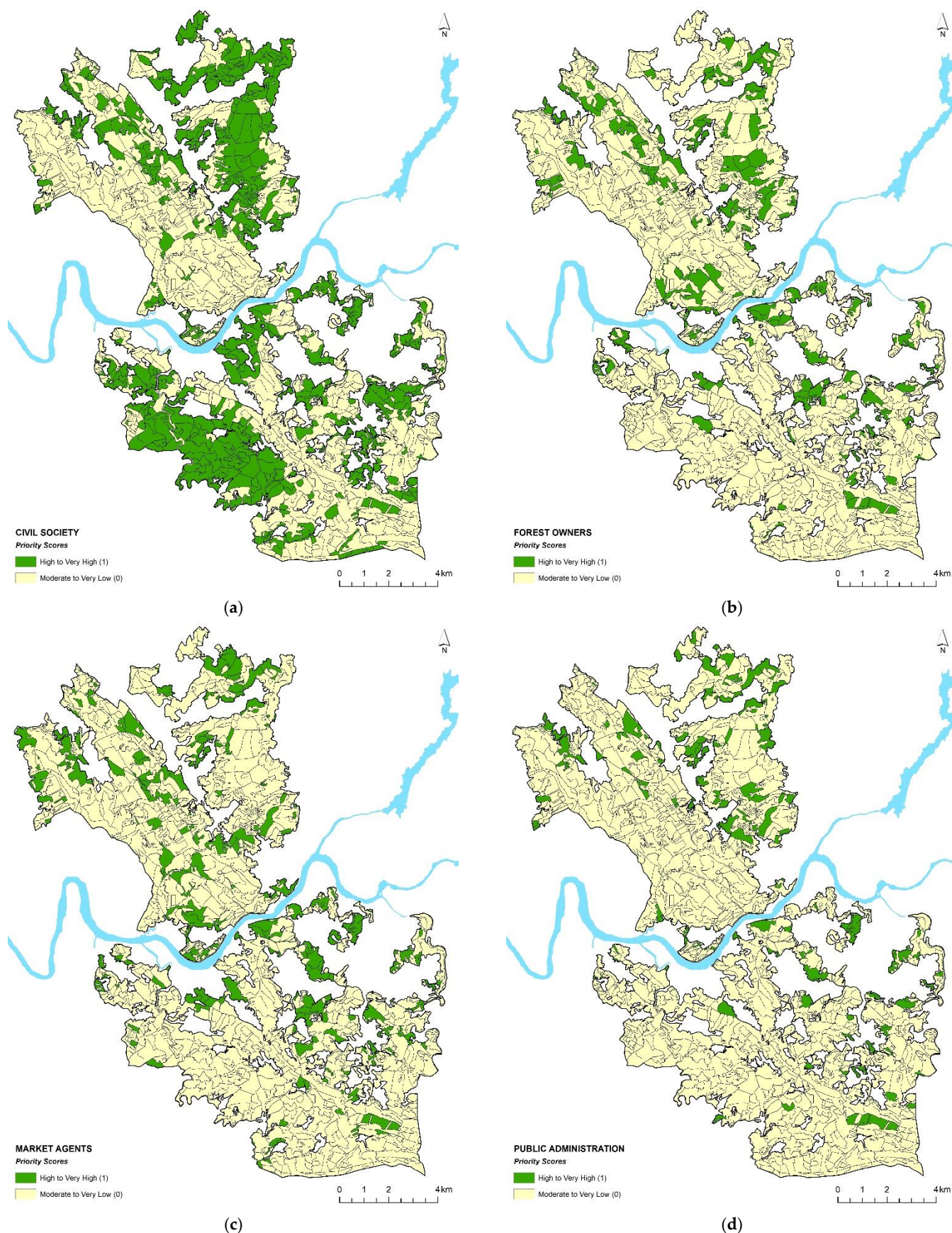


Figure S3.1. Priority scores classified into two Boolean classes of “high and very high” (value 1) and “moderate to very low” (value 0) by interest group: (a) civil society; (b) forest owners; (c) market agents; (d) public administration.

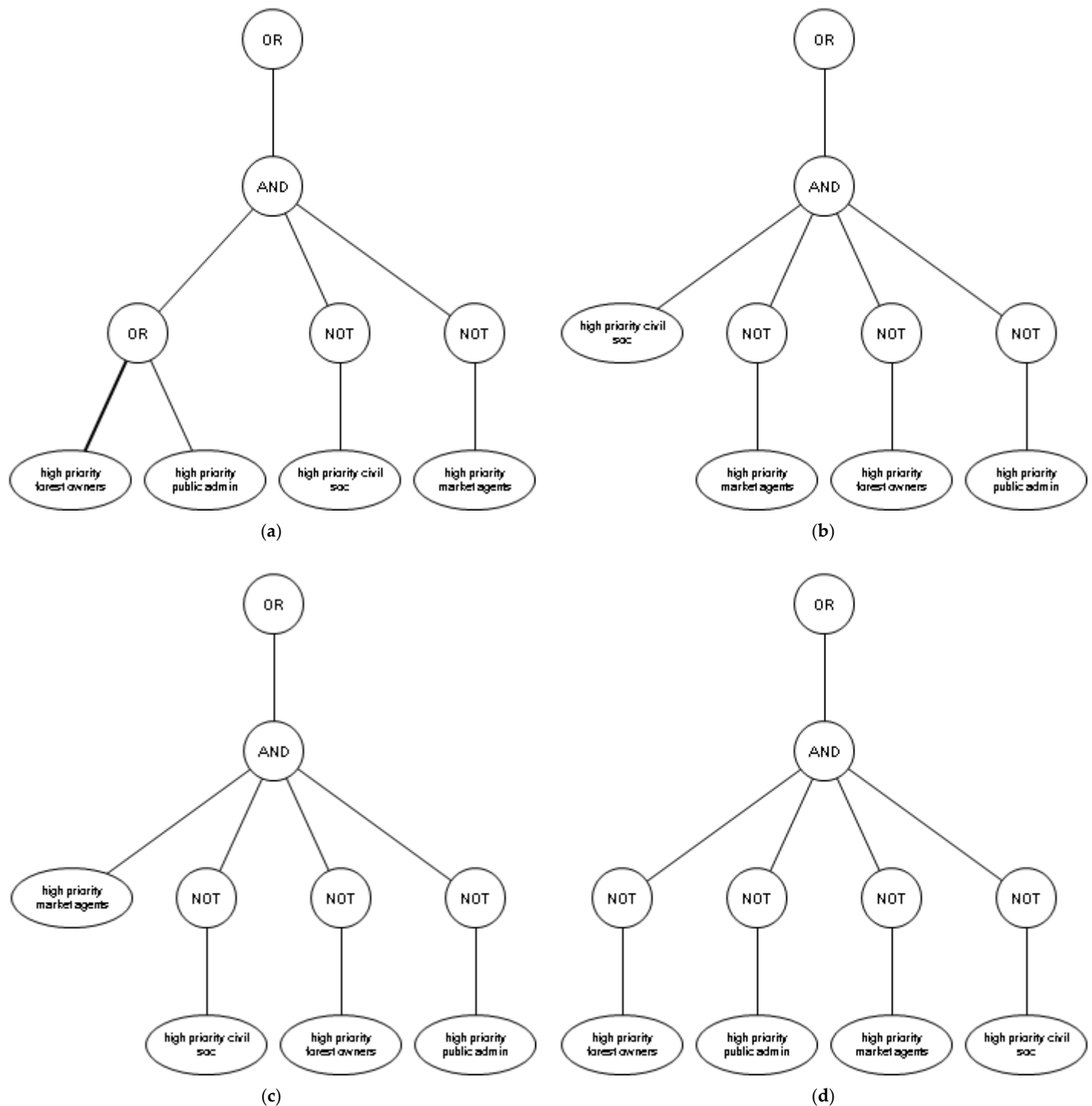


Figure S3.2. NetWeaver logic model: (a) arguments of conflict case 1, where priority scores are high for either forest owners and public administration or both, but priority scores are not high for civil society and market agents; (b) arguments of conflict case 2, where priority scores are only high for civil society; (c) arguments of conflict case 3, where priority scores are only high for market agents; (d) arguments of conflict case 4, where priority scores are not high for any interest group.