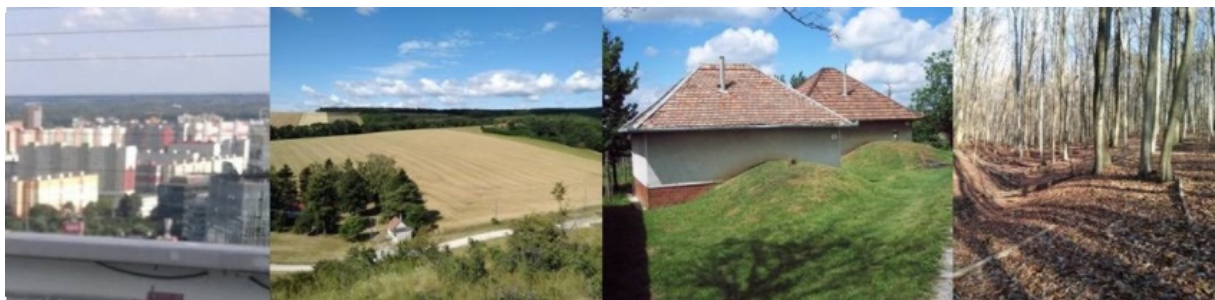




Questionnaire on perception of biocultural landscape

The man has shaped the landscape for centuries and the result of his activity is a biocultural landscape, which is the subject of a research project solved at the Institute of Landscape Ecology of the Slovak Academy of Sciences. The concept of "biocultural diversity" points to the interrelationship of biological and cultural dimensions, their interactions, dependencies, threats, as well as their relationship to the social and economic development of society. We have identified several types of biocultural landscape and we invite you to participate in our short sociological survey to help us identify your perception of the biocultural landscape.

Which type of the landscape do you consider to be the most characteristic of Slovak landscape?



- ☐ Industrial and settlement landscape
- ☐ Rural, agricultural landscape
- ☐ Extensively used semi-natural landscape, composed by mosaic of forest and farmland
- ☐ Natural mountain landscape
- ☐ Combination or other

Which type of landscape do you prefer for housing?



- ☐ Urban
- ☐ Suburban rural

- Rural
- Dispersed settlement

Which type of landscape do you prefer for recreation and relax (short- or long-term)? (Add from 1 point – less interesting to 5 points – the most interesting)



	1	2	3	4	5
Nature/semi-natural landscape					
Water sports and facilities					
Spa					
Sightseeing					
Agro tourism					
Sports facilities					
Amusement parks					

Which type of biocultural landscape do you consider that need landscape protection? (Add 1 point – the least protection needed to 5 point – the highest protection needed)



	1	2	3	4	5
Traditional agricultural landscape					
Traditional meadow-pasture landscape					
Traditional wine-grooving landscape					
Cultural monuments in settlements					
Historic landscape with watermills					
Historical landscape of mixed type					
Traditional mining landscape					
Sacral monuments					

Which types of landscape do you find the most endangered / degraded? (Add from 1 point – under the least threat to 5 point – under the greatest threat)

	1	2	3	4	5
Industrial and settlement landscape					
Rural, agricultural landscape					
Traditional agricultural landscape					
Traditional meadow-pasture landscape;					
Traditional wine-grooving landscape					
Cultural monuments in settlements					
Historic landscape with watermills					
Historical landscape of mixed type					
Traditional mining landscape					
Sacral monuments					
Extensively used forest-agricultural landscape					
Natural mountain landscape					

Please, if you agree, provide us some personal data for statistical purposes.

Gender:

- ☐ Man
- ☐ Women
- ☐ Other/prefer not to state

Age:

- ☐ 18-25
- ☐ 26-40
- ☐ 41-60
- ☐ 60+

Where do you live?

- ☐ House in rural area
- ☐ House in urban area
- ☐ Flat in the rural area
- ☐ Flat in the urban area
- ☐ Other

Education:

- ☐ University degree
- ☐ Secondary school
- ☐ Primary school

Employment sector:

- ☐ Agriculture
- ☐ Industry
- ☐ Services
- ☐ Health and social care
- ☐ Education and Science
- ☐ Local government
- ☐ Student
- ☐ Pensioner
- ☐ Unemploy
- ☐ Others