

Figure S1. Externalization of Spatial Variables.

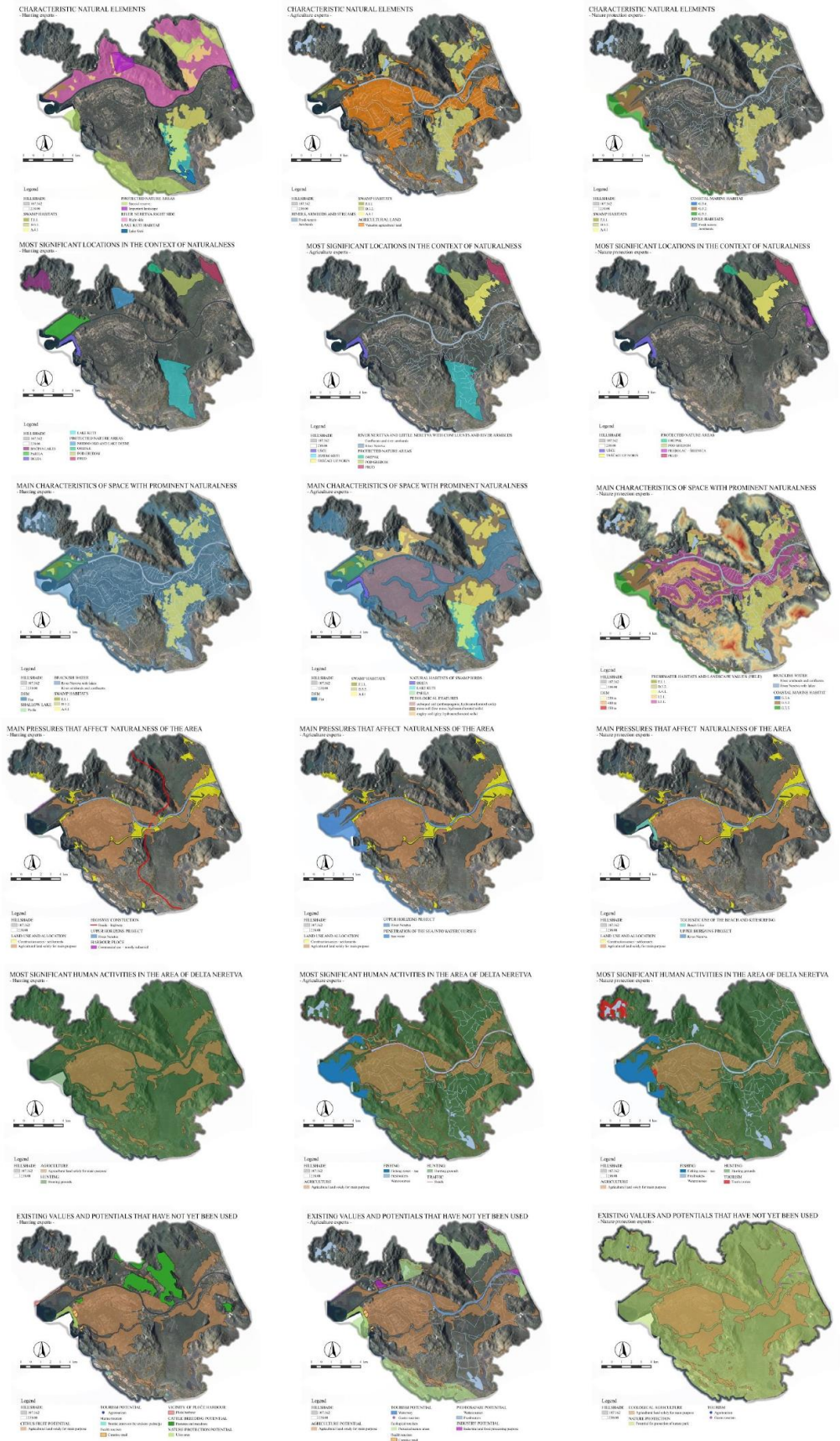


Table S1. Criteria for modeling perception of natural qualities.

Model of perception of natural qualities	Value					Weight factor		
	1	2	3	4	5	NP	AGR	H
1.Characteristic natural values								
Wetlands	210-500m	160-210m	60-160m	10-60m	0-10m	1.559	1.249	1.246
Waters	210-500m	160-210m	60-160m	10-60m	0-10m	1.229	-	-
Benthos	210-500m	160-210m	60-160m	10-60m	0-10m	1.212	-	-
Areas of nature protection	100-1000m	50-100m	20-50m	10-20m	0-10 m	-	-	1.246
Kuti lake	210-500m	160-210m	60-160m	10-60m	0-10m	-	-	1.319
Right side of Neretva river	210-500m	160-210m	60-160m	10-60m	0-10m	-	-	1.190
Surface Waters	210-500m	160-210m	60-160m	10-60m	0-10m	-	1.335	-
Area for Nature park					entire area	-	1.208	-
Soil quality					valuable	-	1.208	-
2. The most significant locations in the context of naturalness								
Areas of nature protection	100-1000m	50-100m	20-50m	10-20m	0-10 m	1.161	-	-
Reeds next to Norin	210-500m	160-210m	60-160m	10-60m	0-10m	1.161	1.177	-
The mouth of the Neretva (Ušće)	210-500m	160-210m	60-160m	10-60m	0-10m	1.231	1.326	1.095
Forest park with cave Predolac	100-1000m	50-100m	20-50m	10-20m	0-10 m	1.125	-	-
Omithological reserve Pod Grede	210-500m	160-210m	60-160m	10-60m	0-10m	-	-	1.11
Omithological reserve Prud	210-500m	160-210m	60-160m	10-60m	0-10m	-	-	1.105
Omithological reserve Orepak	210-500m	160-210m	60-160m	10-60m	0-10m	-	-	1.11
Significant landscape Blue Eye and Desne Lake	100-1000m	50-100m	20-50m	10-20m	0-10 m	-	-	1.08
Kuti lake	210-500m	160-210m	60-160m	10-60m	0-10m	-	1.133	1.189
Baćina lakes	210-500m	160-210m	60-160m	10-60m	0-10m	-	-	1.095
Omithological reserve Parila	210-500m	160-210m	60-160m	10-60m	0-10m	-	-	1.218
Area Vid Norin	100-1000m	50-100m	20-50m	10-20m	0-10 m	-	1.177	-
Surface Waters	210-500m	160-210m	60-160m	10-60m	0-10m	-	1.188	-

Figure S2. Modeling perception of natural qualities – Submodel 1 – characteristic natural values.

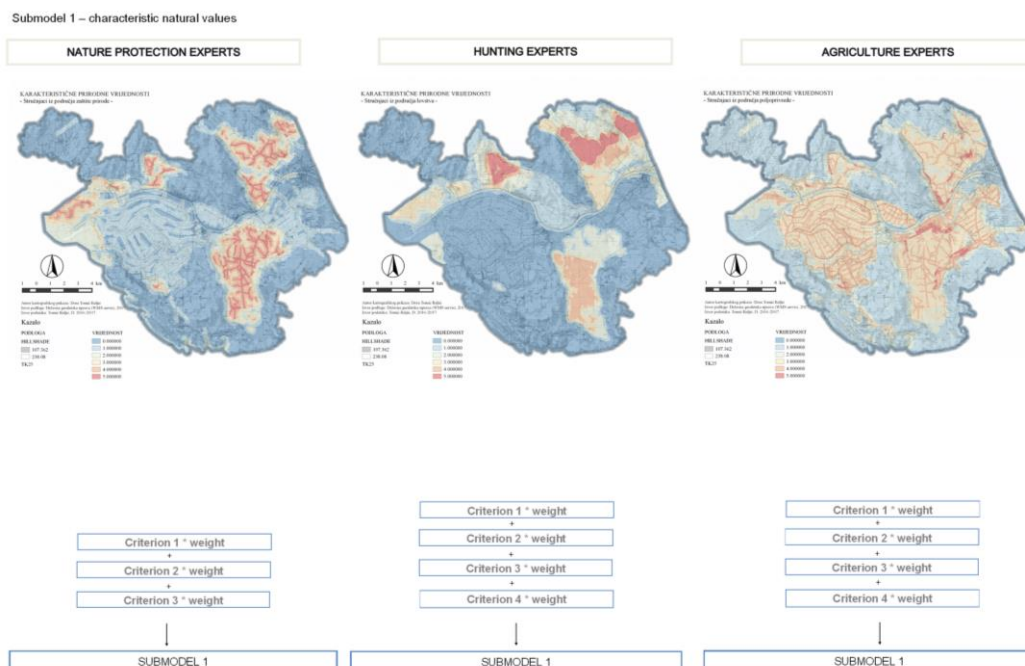


Figure S3. Modeling perception of natural qualities – Submodel 2 – the most significant locations in the context of naturalness.

Submodel 2 – the most significant locations in the context of naturalness

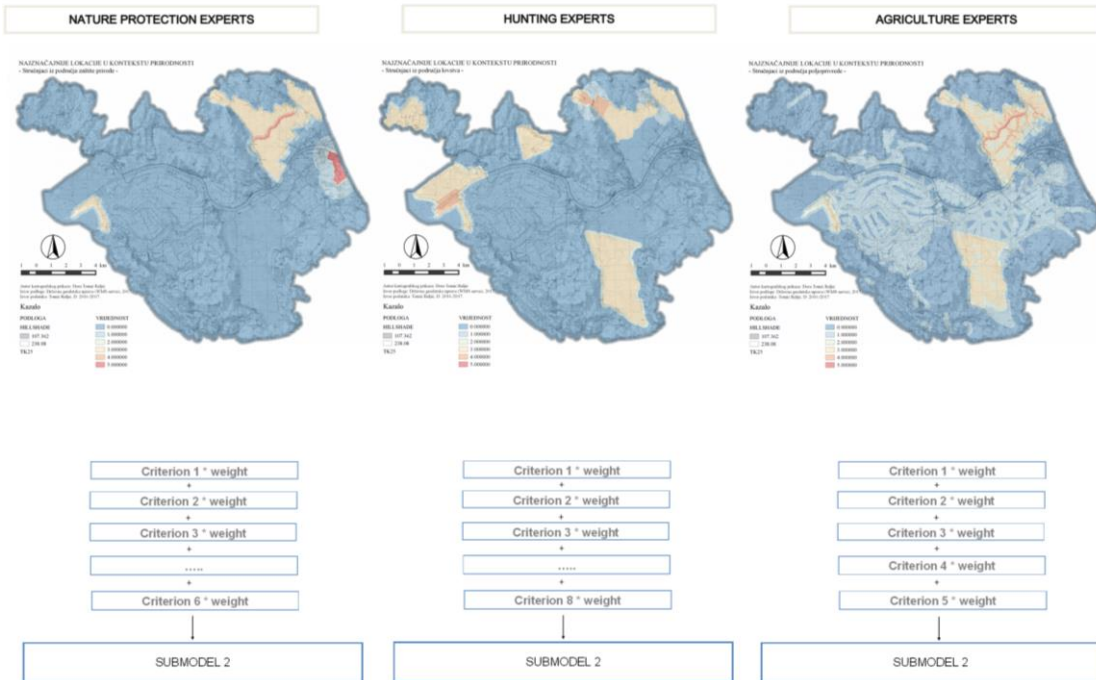


Figure S4. Modeling perception of natural qualities – Submodel 3 – basic characteristics of areas with outstanding naturalness.

Submodel 3 – basic characteristics of areas with outstanding naturalness

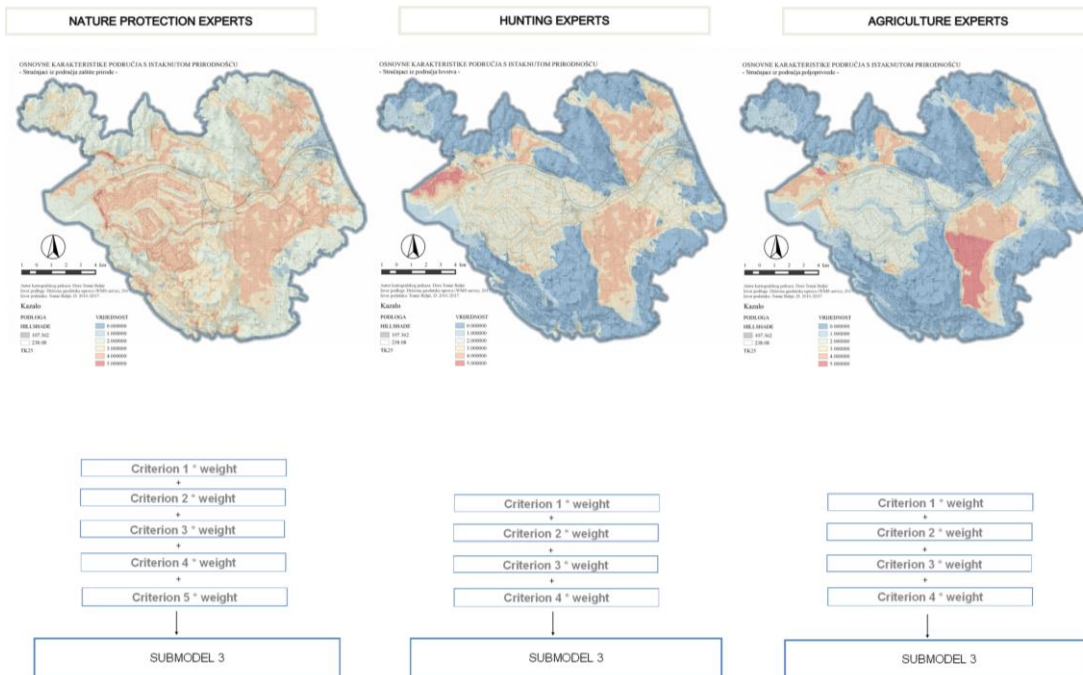


Table S2. Criteria for modeling perception of landscape potential for development.

Model of perception landscape potential for development	Value					Weight factor		
	1	2	3	4	5	NP	AGR	H
1. The most important human activities in the area of Neretva delta								
Agricultural land	50-100m	30-50m	20-30m	10-20m	0-10m	1.507	1.557	1.663
Touristic zones	200-300m	150-200m	100-150m	50-100m	0-50m	1.186	-	-
Fishing zones	40-50m	30-40m	20-30m	10-20m	0-10m	1.307	1.325	-
Hunting areas					State and common hunting grounds	1.307	1.325	1.337
Traffic	40-50m	30-40m	20-30m	10-20m	0-10m	-	1.118	-
2. Unused existing values and potentials								
Ecological agriculture	50-100m	30-50m	20-30m	10-20m	0-10 m	1.169	1.15	-
Agrotourism	500-1000m	300-500m	200-300m	100-200m	0-100m	1.181	-	1.151
Gastrotourism	5000-10000m	1000-5000m	500-1000m	200-500m	0-200m	1.154	1.128	-
Nature park					Whole area	1.496	-	-
Citrus cultivation	50-100m	30-50m	20-30m	10-20m	0-10 m	-		1.175
Health Tourism	500-1000m	300-500m	200-300m	100-200m	0-100m	-	1.128	1.124
Maritime tourism	500-1000m	300-500m	200-300m	100-200m	0-100m	-	-	1.124
Protection of Mouth of Neretva (Ušće)	210-500m	160-210m	60-160m	10-60m	0-10m	-	-	1.148
Port of Ploče	1000-5000m	500-1000m	200-500m	100-200m	0-100m	-	-	1.150
Cattle breeding (pastures)	50-100m	30-50m	20-30m	10-20m	0-10 m	-	-	1.128
Hunting					State and common hunting grounds	-	1.121	-
Nature protection	500-1000m	300-500m	200-300m	100-200m	0-100m	-	1.128	-
River photo safari	40-50m	30-40m	20-30m	10-20m	0-10m	-	1.121	-
Industry	50-100m	30-50m	20-30m	10-20m	0-10 m	-	1.098	-
Waterway	40-50m	30-40m	20-30m	10-20m	0-10m	-	1.125	-

Figure S6. Modeling perception of landscape potential for development - Submodel 1 – the most important human activities in the area of the Neretva delta.

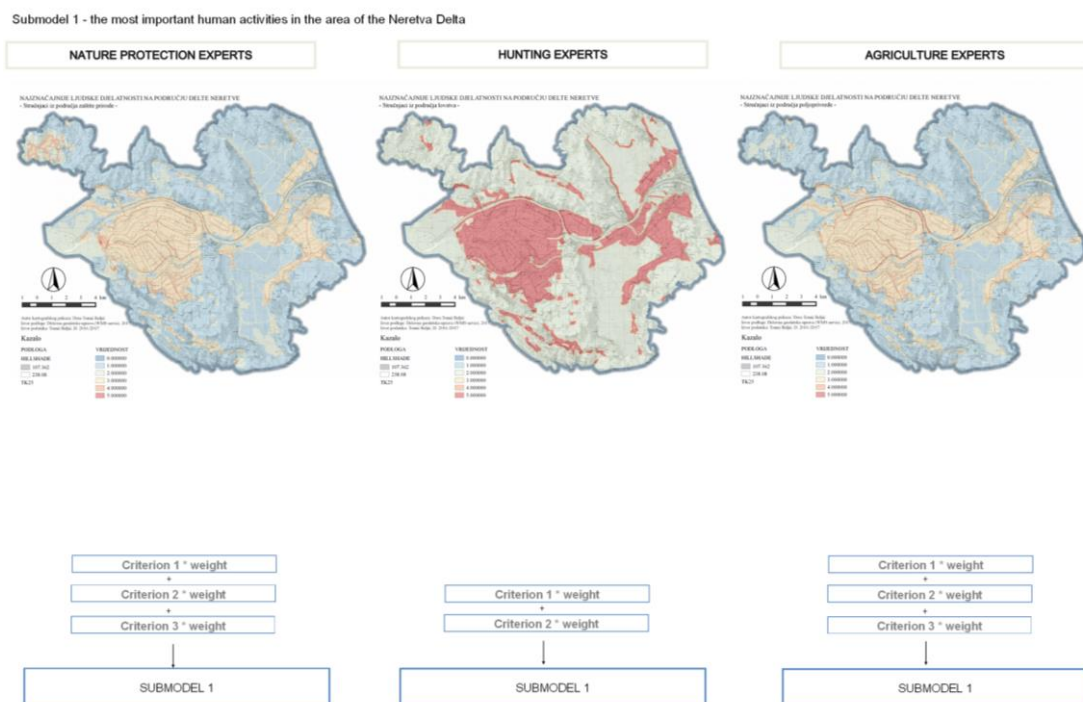


Figure S7. Modeling perception of landscape potential for development – Submodel 2 – unused existing values and potentials.

Submodel 2 - Unused existing values and potentials

