

Table S.1. Summary table of the average values of the parameters considered (standard deviation in brackets). The “training system” column reports three values, indicating vertical system, horizontal system and goblet respectively. Last column reports information on the area cultivated with wine grapes in the whole region (Source: ISTAT, <http://www.agri.istat.it>, assessed in January 2020 ).

	Slope (°)	Interrow (m)	Length-Width Ratio	Headland (m)	Regular Shape (%)	Training system (%)	Wine grapes area (1000 ha)
Abruzzo	6.98 (4.03)	2.66 (0.68)	1.66 (1.29)	5.45 (0.98)	69	61-39-0	32.5
Basilicata	6.21 (4.74)	2.15 (0.64)	1.86 (1.31)	3.74 (1.79)	87	99-1-0	2.0
Calabria	5.17 (4.77)	2.37 (0.72)	1.64(1.83)	4.28 (1.46)	58	84-0-16	8.8
Campania	4.49 (2.53)	2.44 (0.62)	1.73 (1.34)	3.61 (1.37)	71	94-6-0	25.6
Emilia Romagna	7.59 (6.23)	3.13 (0.66)	1.68 (1.29)	5.81 (1.59)	80	94-6-0	53.3
Friuli Venezia Giulia	1.32 (0.81)	2.70 (0.26)	1.78 (1.40)	6.49 (1.68)	39	100-0-0	24.1
Lazio	4.39 (3.51)	2.96 (0.78)	1.64 (1.06)	5.80 (1.97)	25	80-18-2	20.1
Liguria	11.20 (9.20)	2.04 (0.40)	1.75 (2.18)	3.26 (1.52)	54	64-12-24	1.6
Lombardia	5.51 (5.51)	2.21 (0.35)	1.52 (1.27)	3.81 (0.81)	43	90-10-0	24.6
Marche	8.93 (5.17)	3.20 (0.77)	1.87 (0.84)	5.60 (1.23)	22	100-0-0	15.8
Molise	4.67 (3.59)	2.76 (1.73)	2.02 (1.46)	5.48 (1.88)	23	95-5-0	5.5
Piedmont	5.32 (6.62)	2.54 (0.52)	1.97 (1.87)	4.10 (1.10)	76	99-1-0	43.4
Puglia	1.66 (2.43)	2.23 (0.34)	2.40 (1.73)	5.52 (1.80)	25	57-43-0	87.6
Sardinia	4.47 (3.80)	2.18 (0.35)	1.74 (1.34)	3.80 (1.56)	9	66-0-34	26.6
Sicily	4.83 (4.10)	2.50 (0.31)	1.82 (1.44)	5.49 (1.56)	65	92-7-1	107.0
Trentino Alto Adige	9.04 (6.42)	2.64 (0.77)	1.84 (1.34)	3.28 (0.73)	43	43-57-0	15.6
Tuscany	5.06 (3.66)	2.62 (0.33)	1.39 (0.87)	5.50 (1.17)	61	100-0-0	59.0
Umbria	5.28 (2.53)	2.78 (0.31)	1.44 (0.96)	5.19 (0.98)	27	100-0-0	12.3
Valle d’Aosta	13.66 (9.37)	2.41 (0.95)	1.17 (0.71)	3.73 (6.80)	30	90-10-0	0.47
Veneto	3.19 (3.55)	3.13 (0.60)	2.21 (2.23)	4.38 (1.57)	19	94-6-0	87.0



Figure S.1. Tendone is an overhead horizontal training system common in southern Italy



**Figure S.2. Pergola is an open canopy training system common in northern Italy**

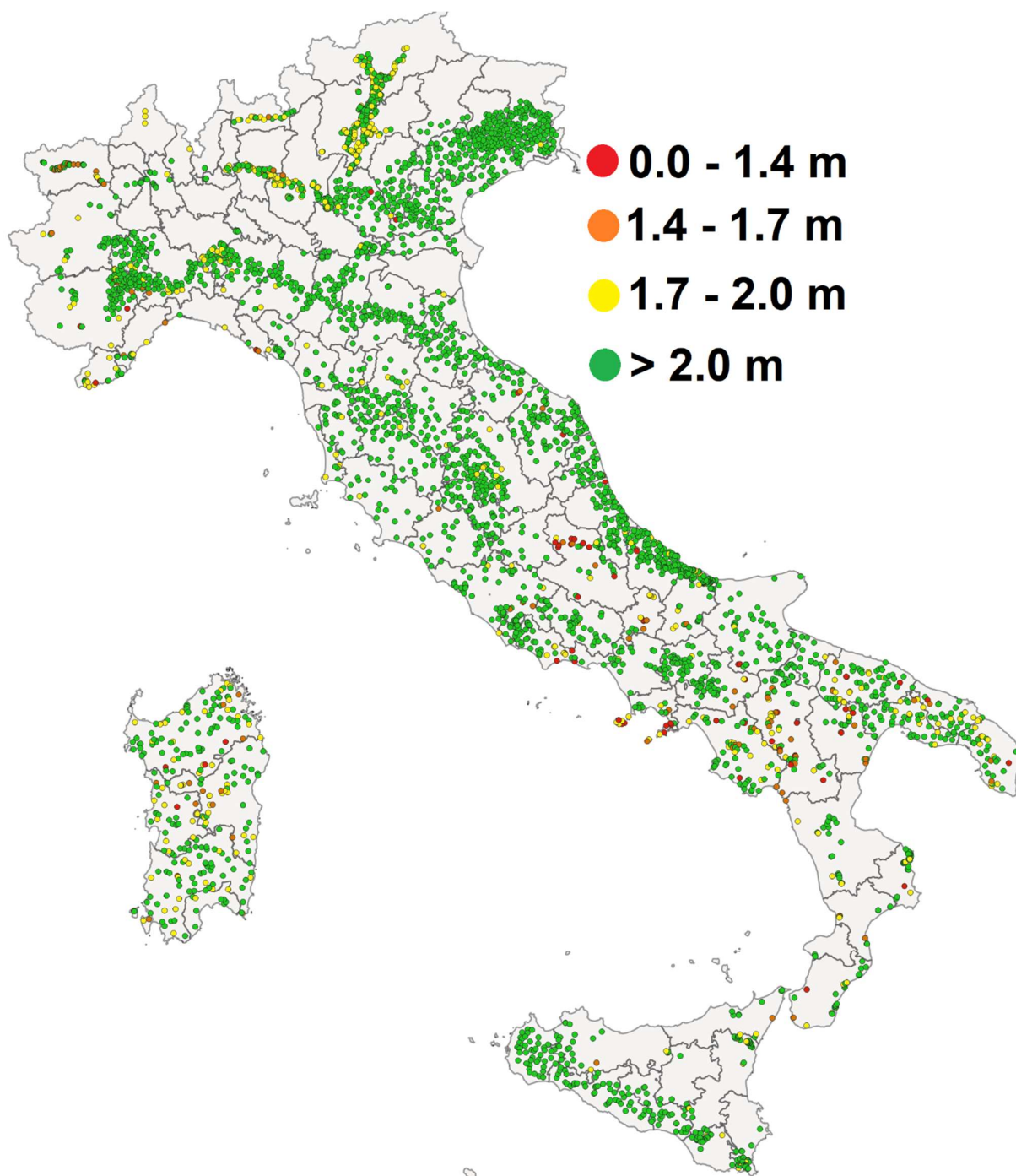


Figure S.3. Distribution of the row spacing (dots). The background layout shows Italian provinces.

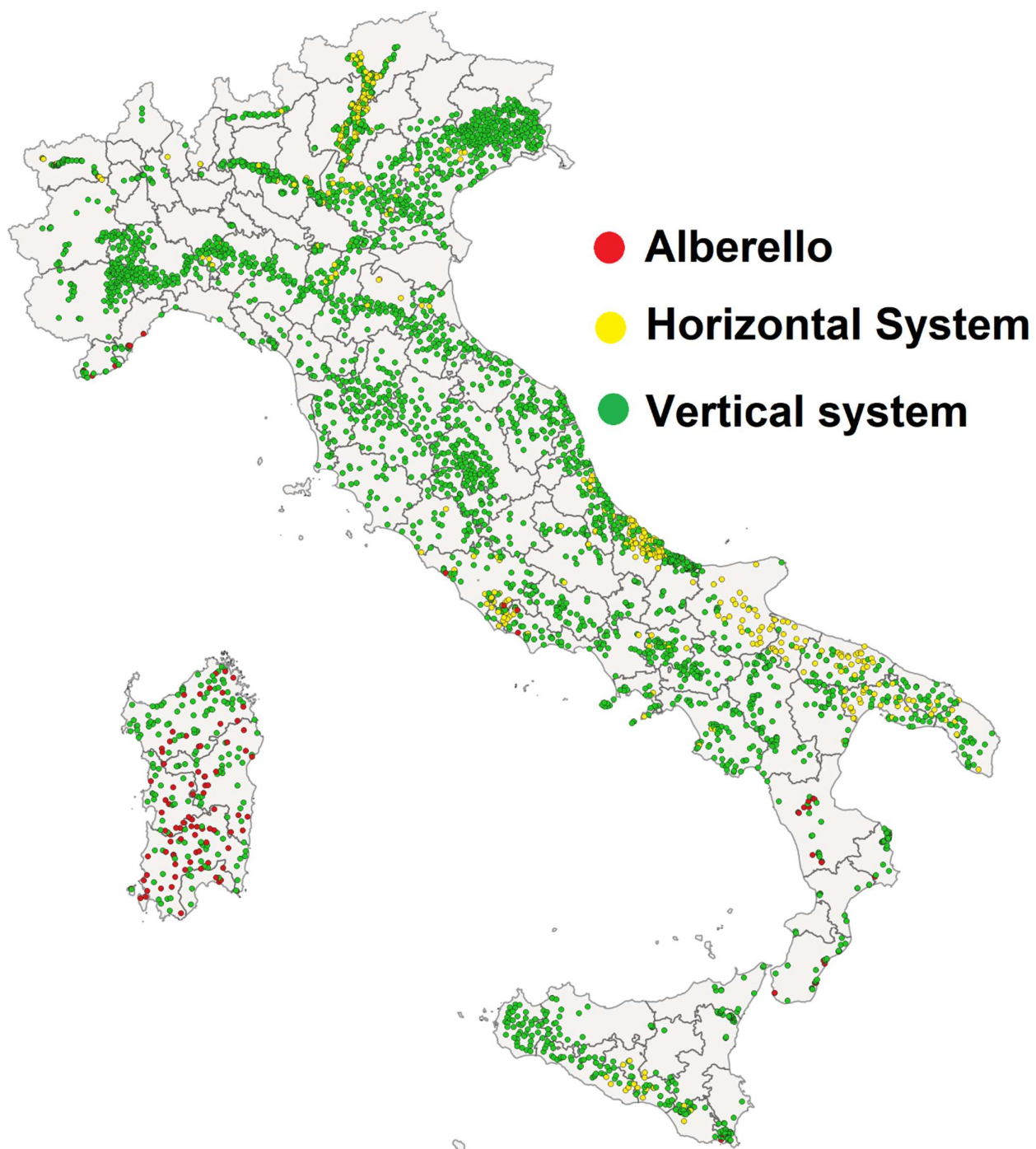


Figure S.4. Distribution of the training system (dots). The background layout shows Italian provinces.

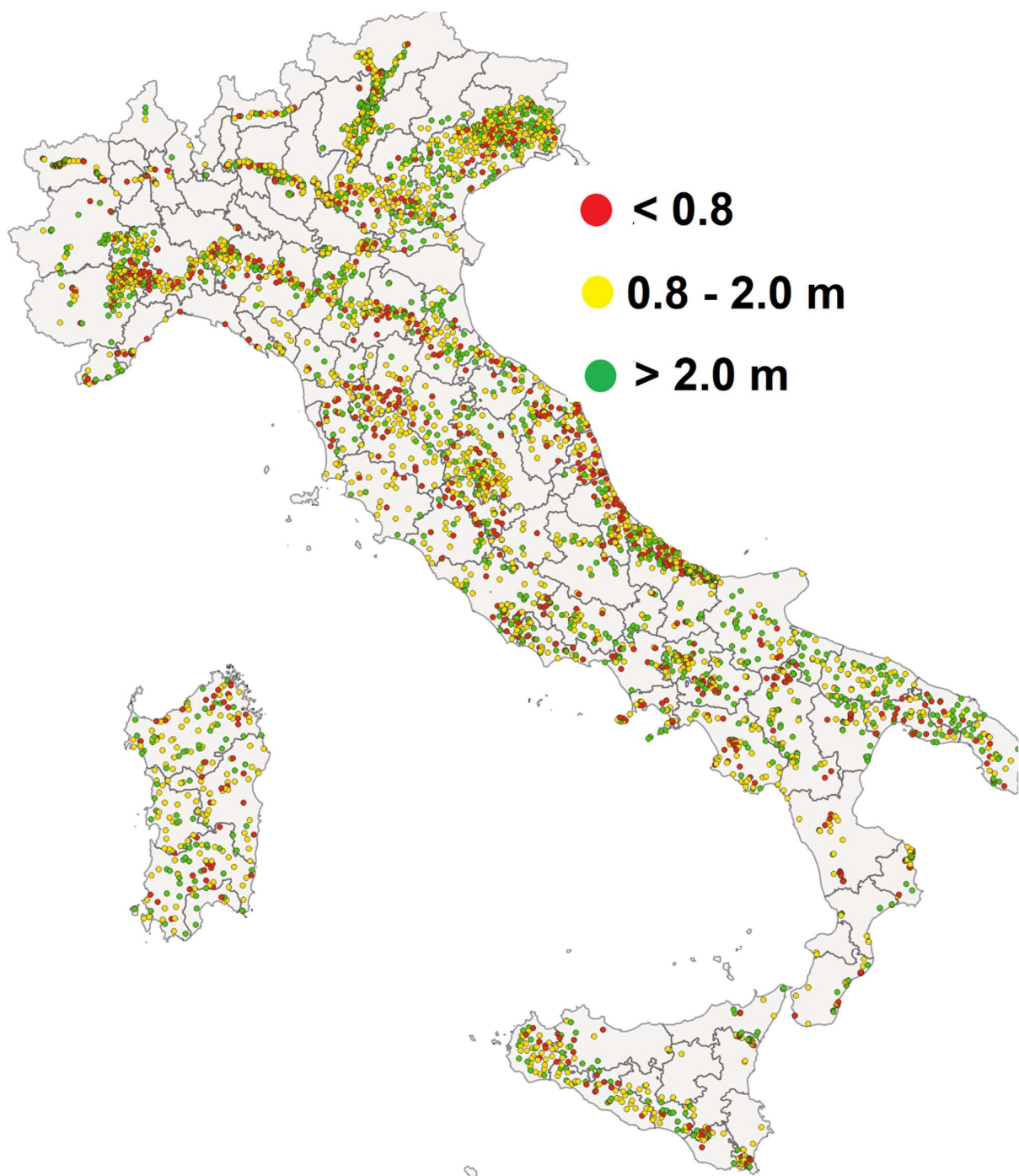


Figure S.5. Distribution of the length/width ratio (dots). The background layout shows Italian provinces.

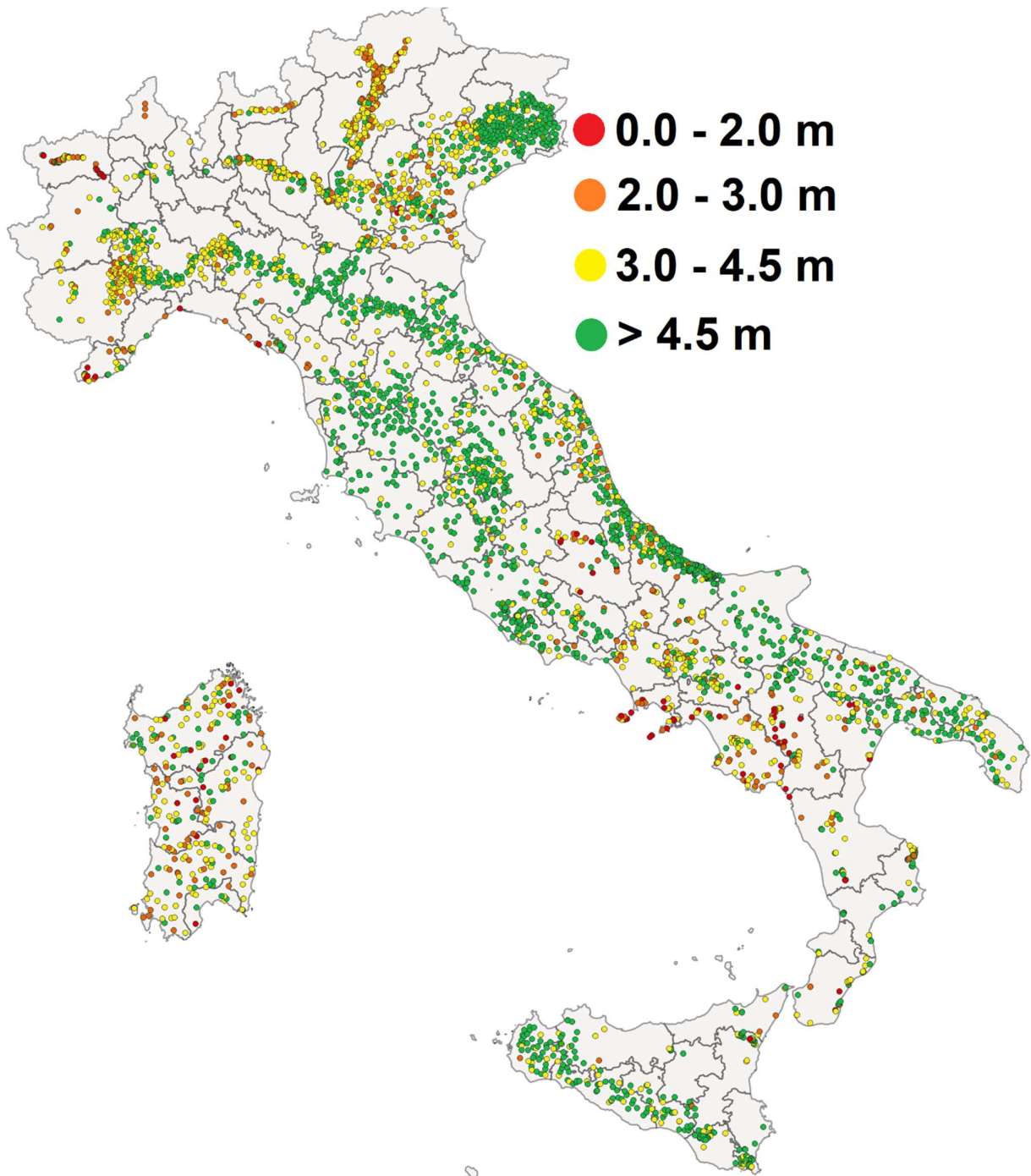


Figure S.6. Distribution of the headland size (dots). The background layout shows Italian provinces.

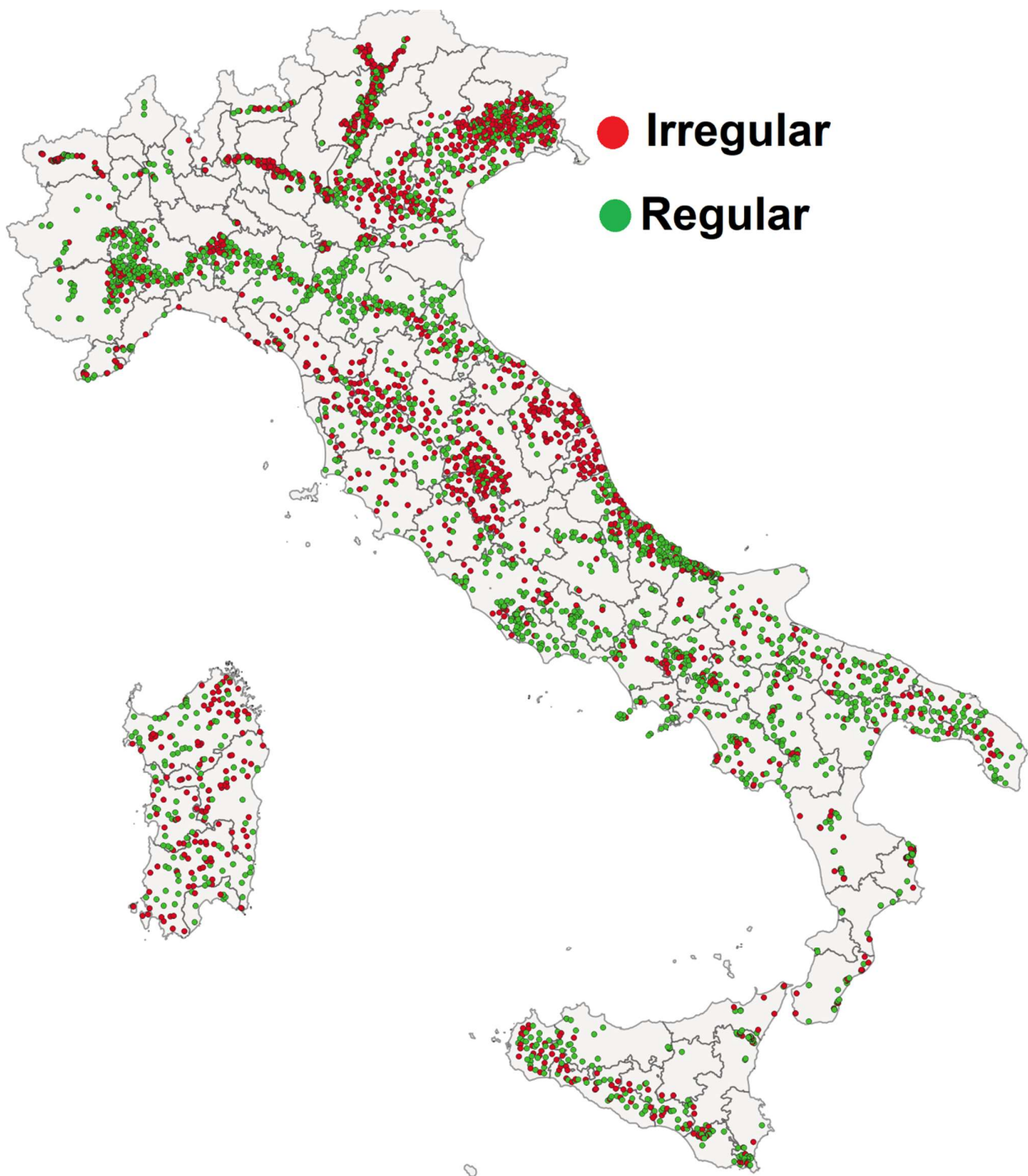


Figure S.7. Distribution of the block shape (dots). The background layout shows Italian provinces.

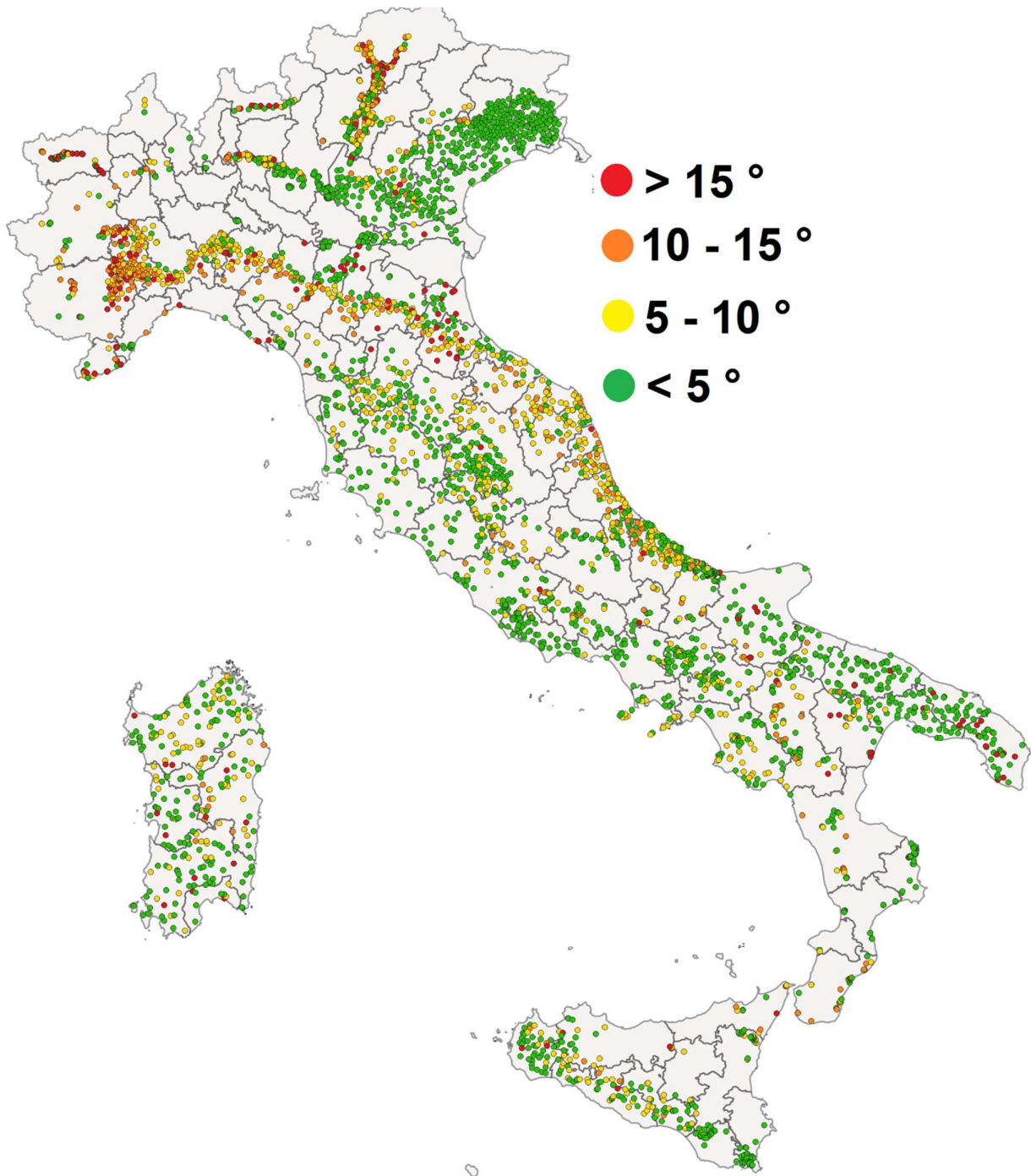


Figure S.8. Distribution of the mean slope (dots). The background layout shows Italian provinces.