

Figure S1. IDH1 R132H staining pattern as demonstrated by IHC with MRQ-67. (A) Glioma cells in the BT142 mut/- cell pellet block stained positive, with the immunoreactivity in cytoplasmic and nuclear spaces. (B,C) Tissue samples from an oligodendroglioma (B) and a secondary glioblastoma (C) showing a cytoplasmic and nuclear stain in tumor cells, but not in blood vessels (arrow). UltraView, visualized with DAB, and counterstained with hematoxylin. Scale bar = 50 μ m.

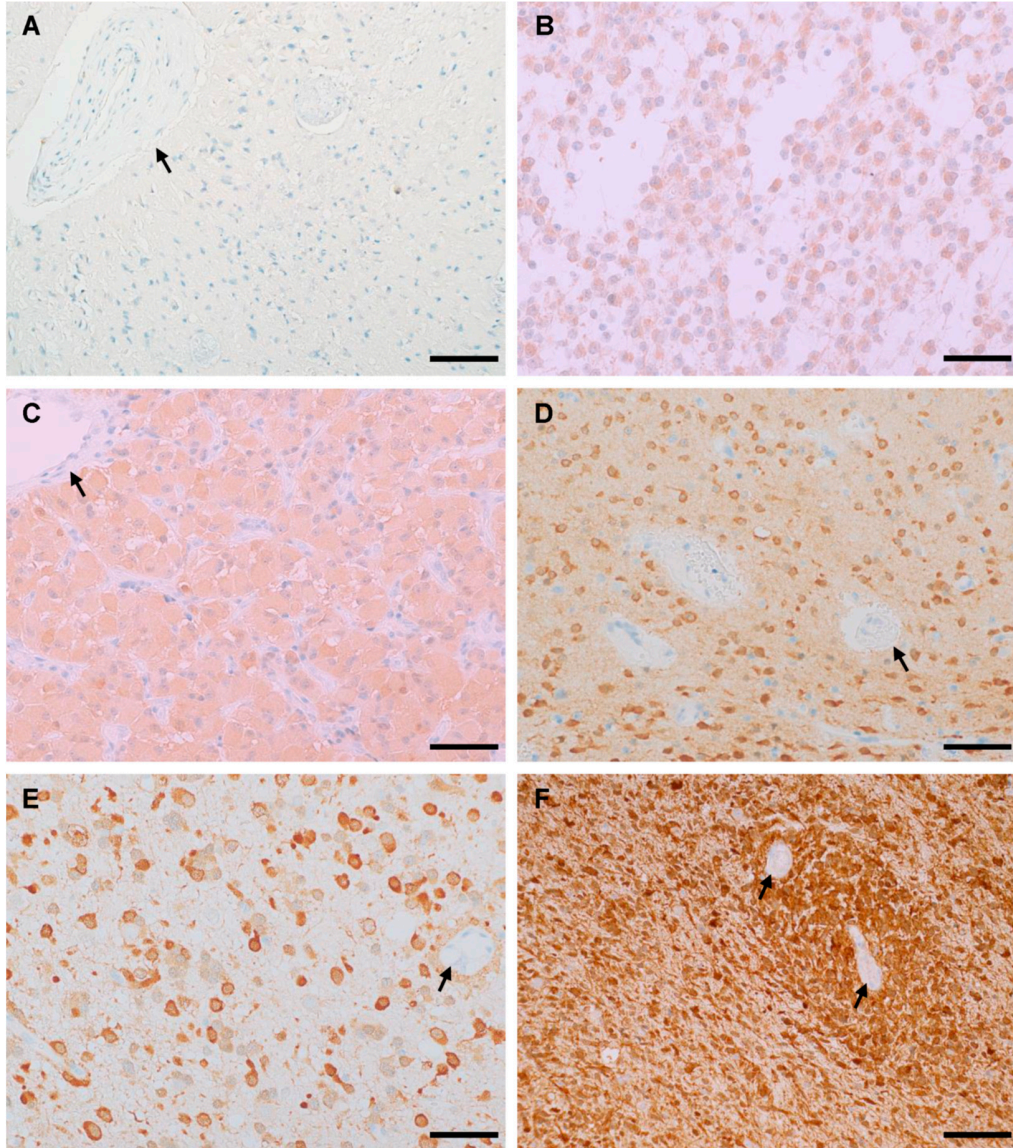


Figure S2. Result assessment of the immunostaining on diffuse gliomas as shown with MRQ-67. Results were graded as negative (0; **A**) and positive (**B-F**), and immunoreactivity levels were scored as 1 (**B**), 2 (**C**), 3 (**D**), 3.5 (**E**) and 4 (**F**). The reactivity is localized in tumor cells, but not in blood vessels (arrow). UltraView, visualized with DAB, and counterstained with hematoxylin. Scale bar = 100 μ m.