

Table S1: Estimated secondary structure fractions (in %) of I-IV determined from the ECD spectra [47,48] measured in H₂O and in the presence of TFE (10–50 %) and SDS (0.016–8 mM).

solvent	I						II					
	α	3_{10}	β -sh	β -t	PPII	rnd	α	3_{10}	β -sh	β -t	PPII	rnd
H ₂ O	29	10	3	18	6	34	3	3	11	17	16	49
10 % TFE	29	11	4	19	4	35	3	6	7	21	17	47
20 % TFE	31	11	4	18	4	33	39	14	0	17	4	29
50 % TFE	32	11	5	16	4	32	39	12	0	16	4	29
0.016 mM SDS	29	10	3	16	6	35	0	5	11	19	16	49
0.16 mM SDS	35	10	2	19	4	31	5	5	10	19	16	45
2 mM SDS	49	8	4	13	3	24	44	8	9	15	1	24
4 mM SDS	50	7	4	13	3	24	44	6	12	13	1	24
8 mM SDS	45	9	4	13	3	26	48	9	1	12	5	26

solvent	III						IV					
	α	3_{10}	β -sh	β -t	PPII	rnd	α	3_{10}	β -sh	β -t	PPII	rnd
H ₂ O	3	6	7	21	17	47	3	3	6	20	21	48
10 % TFE	20	9	3	19	9	41	6	3	10	16	16	48
20 % TFE	37	12	0	19	4	30	18	10	8	17	7	39
50 % TFE	37	13	0	17	3	30	21	12	8	17	6	37
0.016 mM SDS	3	4	11	18	17	47	2	3	5	21	21	49
0.16 mM SDS	6	5	13	18	16	44	17	4	9	18	13	40
2 mM SDS	35	10	9	13	3	30	36	9	12	13	3	30
4 mM SDS	31	7	18	11	3	29	29	11	10	14	4	32
8 mM SDS	27	10	7	16	5	35	26	10	11	14	4	34

α – α -helix, 3_{10} – 3_{10} helix, β -sh – β -sheet, β -t – β -turn, PPII – polyproline II helix, rnd – random coil

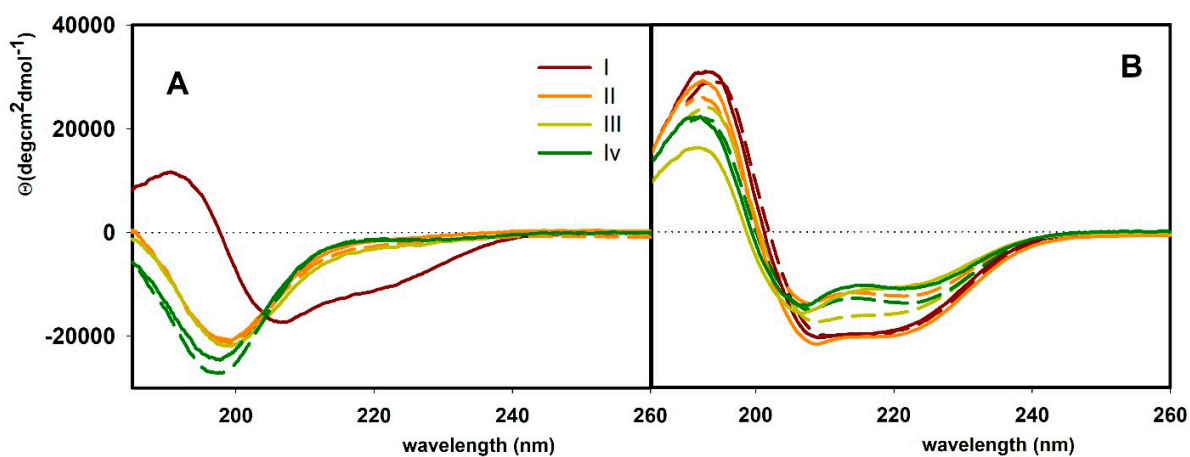


Figure S1: ECD spectra of I-IV in H₂O (A) and in the presence of SDS (16 mM) (B) collected before (solid line) and after (dashed line) the VCD and ROA spectra measurement.

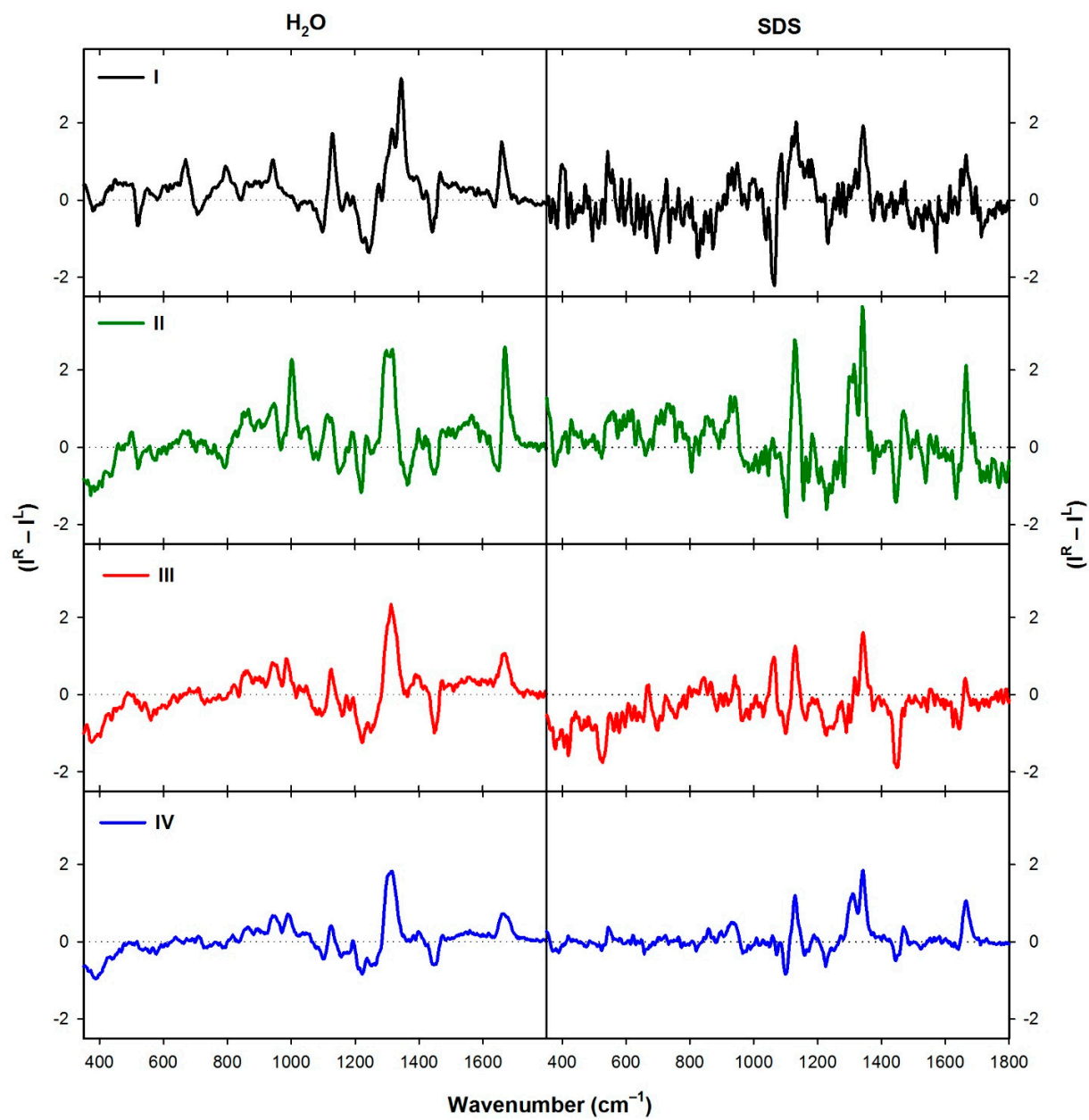


Figure S2: Normalized ROA spectra of I-IV measured in H₂O (left) and 100 mM SDS (right).