




Article

# Assessment of Geotourism Values and Ecological Status of Mines in Kopaonik Mountain (Serbia)

Danijela Vukočić <sup>1,\*</sup>, Radomir Ivanović <sup>1</sup>, Dragan Radovanović <sup>1</sup>, Jovan Dragojlović <sup>1</sup>, Nataša Martić-Bursać <sup>2</sup>, Marko Ivanović <sup>1</sup> and Dušan Ristić <sup>1</sup>

<sup>1</sup> Faculty of Sciences, University in Priština-Kosovska Mitrovica, Lole Ribara 29, 38220 Kosovska Mitrovica, Serbia; radomir.ivanovic@pr.ac.rs (R.I.); dragan.radovanovic@pr.ac.rs (D.R.); jovan.dragojlovic@pr.ac.rs (J.D.); marko.ivanovic@pr.ac.rs (M.I.); dusan.ristic@pr.ac.rs (D.R.)

<sup>2</sup> Faculty of Nature and Mathematics, University of Niš, Višegradska 33, 18000 Niš, Serbia; natasamarticbursac@gmail.com

\* Correspondence: danijela.vukoicic@pr.ac.rs; Tel.: +381-66-800-6426

Received: 30 January 2020; Accepted: 6 March 2020; Published: 17 March 2020



**Abstract:** Abandoned mines can pose a major environmental hazard. At the beginning of the 21st century, significant steps were taken all around the world in order to protect these historically valuable complexes, and the mining heritage was recognized as a potential for the development of alternative tourism. This exploration covers mines in the Kopaonik Mountain area. Mining on this mountain began in ancient times. It has developed throughout history, and today only one mine is active. Three abandoned (Gvozdac, Suvo Rudište and Raičeva Gora) and one active mine (Belo Brdo-Zaplanina) are the subject of research. The basic aim of the research is twofold. The estimation of geo-tourist values was performed using the Geosite Assessment Model (GAM), and the ecological status assessment WAS performed according to the standard model based on negative and positive values. Based on the applied methods, it was concluded that mines (geosites) have a high level of natural characteristics, and that differences between geosites are evident in tourist values. The reason for this is insufficient tourist affirmation and the insufficient availability of tourist infrastructure. With the ecological status, positive values were observed on the geosites, which also differ from one (Raičeva Gora) to 15 points (Gvozdac). In the end, the results obtained are of great scientific importance, and their direct application is in the development of the Tourism Development Strategy in the Kopaonik area.

**Keywords:** mining heritage; geosites; geotourism value; ecological status; environment; Kopaonik; Serbia

## 1. Introduction

Human activities directly and indirectly affect the environment through their activities [1]. Thus, through a direct or indirect combination of human activities and natural forces, numerous landscapes have been created [1,2]. The anthropogenic activities significantly change the landscape and they can be implemented within the framework of sustainable management and conservation of geomorphological heritage, which is confirmed by the study by Kubalíkova et al. [3]. The results of the anthropogenic assessment in this study may serve the purpose of landscaping and assist in arguments for the conservation of particular localities. Baczińska et al. [4] also performed the evaluation of landscape attractiveness, on the example of abandoned quarries.

Mining activity and related mineral processing are generally considered among the major anthropogenic sources of potentially harmful elements and other contaminants in the environment [5,6]. The accelerated mass closure of unprofitable mines without proper environmental impact assessments and scientific justification has multi-component environmental impacts [7]. The extent of the adverse

impacts of mine closures on the landscape and the living world are variable and reflect the extent of environmental management measures. Decommissioned mining sites represent the usual case studies in environmental sciences [8], especially regarding the dispersion and geochemical mobility of potentially harmful elements which can cause contamination of soils [9,10], sediments [11,12], waters [6,13] and vegetation [14,15]. The main problems associated with mine closure are erosion and soil pollution [16], surface discharges, aquifer collapse, deterioration of natural water quality [17,18] and waste piles [19,20]. Mine acid water can be toxic; its chemistry reflects its mineral sulfide content [17,21–24]. Acid mine drainage (AMD) is a worldwide environmental problem representing a primary source of contamination by heavy metals in both active and abandoned mining areas [25–29]. The release of mine acid is a complex process triggered by the oxidation of Fe (II) sulfide, mainly pyrite ( $\text{FeS}_2$ ), in contact with water and atmospheric oxygen. The oxidation of pyrite creates acidic waters rich in iron and sulfate that are able to dissolve other sulfides (e.g., sphalerite ( $\text{ZnS}$ ), chalcopyrite ( $\text{CuFeS}_2$ ), galena ( $\text{PbS}$ )) linked to pyrite, which are responsible for releasing heavy metals such as Cd, Cu, Pb, and Zn in the resulting drainage waters. Bacterial activity plays a key role in the acid mine drainage process by increasing the rate of pyrite oxidation and the production of acid mine drainage [30]. The release of mine acid is mainly related to the disposal at open landfills of sulfide rich ore (e.g., tailings) produced by ore processing activities, as well as the exploitation of the mineralization of sulfide on precious and base metals through open pits and underground mines [29].

On the basis of the Law on Mining and Geological Surveys (Article 146) of the Republic of Serbia, the Government determines the conditions, criteria, programming, procedure and manner of performing the rehabilitation and reclamation of abandoned mines and mining facilities. Procedures for rehabilitation and reclamation of abandoned mines and mining facilities are performed on the basis of (Article 148): studies of the current situation, mining works and facilities; a project of engineering–geological research in order to determine the technical and technological bases for the design of the rehabilitation and recultivation projects; projects for rehabilitation and reclamation of abandoned mines and mining facilities. The owner of the exploitation is obliged, during and after the completion of the execution of the exploitation works, and within one year at the latest, upon the completion of the works on the surfaces where the mining works have been completed, to recultivate the land in accordance with the technical project of technical and biological reclamation, which is integral part of the main or supplementary mining project (Article 153) [31].

Surface mines and underground excavations can seriously damage the natural environment and living organisms. As there are no precise data on the ecological status and exact locations of abandoned mines, they pose a major environmental hazard. At the sites of abandoned ore fields from underground pits and surface mines, mine waters are collected which directly affect the environment by drainage. Such waters adversely affect the water quality of the basin and are a direct danger to human health beyond the boundaries of the mine area for an extended period of time. The physical–chemical characteristics of the deposited mining waste influence the process of land formation and biodiversity. Mining areas are characterized by accelerated erosion processes that can significantly affect change in the topographic surface and cause hazards such as floods, landslides and avalanches. Traces of mining activity can also seriously affect the visual appearance of the area (abandoned buildings and mining facilities for mineral processing, waste disposal sites, open pit excavations, open pits, etc.). In addition to environmental impacts, all this causes economic damage to public and private land.

The remains of mining and the processing of mineral resources that are used to represent and interpret the values and issues linked to the mining industry and mineworkers can, therefore, be labelled as mining heritage [32–34]. It can be either material (pits, buildings, equipment, miners' uniforms) or immaterial (procedures, miners' habits, and traditions). The closure of mines brought stagnation and economic transformation. When mining ceases, large contaminated areas require specific treatment. It is important to conserve substantial elements of the heritage of mining, creating a real mining heritage. These are the tasks of the conservation authorities and expert institutions. Heritage protection is an important stage in the process and is determined by many conditions, mostly set by laws or

international conventions. With regard to the recognition of the mining heritage, there is a question of how to present it and at the same time to interpret and pass it on in order to preserve and cultivate its specific values and meanings. The origin of the mining heritage is seen as a component of the area regeneration (economic and social) and it should be used appropriately. Many museums, open-air folk museums, and mines or galleries open to the public have come into existence. However, the mining landscape itself can also be seen as a mining heritage. Mining tourism is more focused on the remnants of mining activity and mining heritage; it can be considered as an important process in the interpretation of mining heritage and serve as a source of employment even after the end of mining.

Interpretation of its tourism values can be presented as a type of geotourism [35]. Yet geotourism partly differs from mining tourism in its geological and geomorphological focus [36]. Geotourism is an abiotic parallel to ecotourism [37]. The roots of the geotourism concept come from the work of Jenkins [38], while some later authors have linked geology to tourism [38–44]. Newsome and Dowling [45] consider geotourism a form of tourism within the natural area that focuses specifically on geology and relief, i.e., a form that promotes tourism at geosites. Geotourism is a process of recognizing and giving wider significance to geo-heritage objects that should lead to their better and more efficient conservation, and its most important elements are measures of geo-conservation combined with tourism promotion [35,46–48].

The main objectives of geotourism include promotion and protection of geoheritage throughout tourism activities along with educational and interpretive elements in order to increase the awareness of the wider public for conservation needs as well as sustainable development of the tourism industry [49,50].

Although Serbia occupies a small territory, in geological terms it is an extremely diverse and complex area located at the junction of large geotectonic entities: the Dinarides, the Vardar Zone, the Serbian–Macedonian Mass, the Carpatho-Balkanides and the Pannonian Basin [51,52]. In the study of geological material, certain phenomena and profiles are recognized as part of the natural heritage that should be preserved because of their scientific, aesthetic, historical and other values. Generally, there is a growing amount of geotourism research in Serbia. The northern [53,54], eastern [49,55–58] and western parts of Serbia [59] are equally explored, while the Kopaonik and the Devil's Town [60] were explored in southeastern Serbia.

This study will focus on the evaluation and revitalization of abandoned mines in Serbia, in the area of Kopaonik Mountain. The primary objective of this research is twofold. The first is the assessment of the geotourism values of the mines and the second is the assessment of the ecological status and impact of the mines on the environment, while the ultimate goal is their revitalization and rounding off of tourist offers in the area.

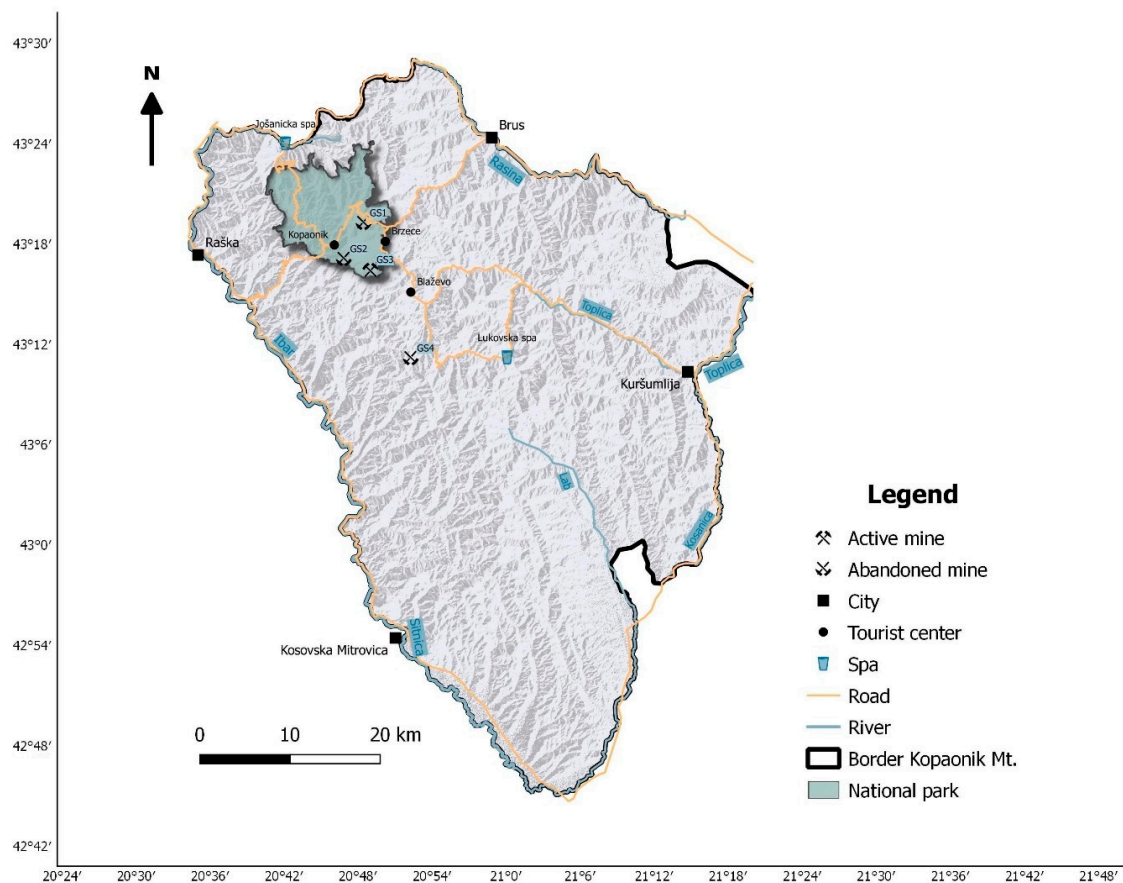
## 2. Materials and Methods

### 2.1. Study Area

The Kopaonik Mountain (Serbia) was selected for the case study. The reason for the selection lies in the fact that mining at Kopaonik began in ancient times. It has developed throughout history and has survived to this day. Even its name is comprised of a word that denotes digging (Kopaonik stems from the Serbian word "kopati" which means "to dig") and silver ore (Venetian name "montagna dell argento", meaning silver mountain). Even more striking are the toponyms of local settlements which are based on the words that denote ores (Suvo Rudište and Rudnica), silver (Srebrenac), iron (Gvozdac) and limestone elevations (Belo Brdo) [61].

By 1990, 18 mines were being mined at the Kopaonik surface and mine shafts. Due to the closure of all underground mines (as a result of the depletion of ore reserves and restrictions by the proclaimed National Park regime) and, a little later, the surface mines (except the lead and zinc mines Belo Brdo–Zaplanina), mining is not a significant economic activity today.

Kopaonik Mountain, with an area of approximately 2750 km<sup>2</sup>, lies at the contact of central and southern Serbia and represents the boundary between the Dinaric and Rhodope Mountain Systems. It is surrounded by river valleys: Jošanica, Pločanska and Koznička in the north; the middle course of Rasina and Blatašnica in the northeast; Toplica, Kosanica, Dubnica and Lab in the east; Lab in the south and Sitnica and Ibar in the west [60]. The mountain stretches in the north, west, south and east directions to a length of 80 km, reaching, in its middle part, a width of about 40 km [62,63]. In 1981, an area of 11,810 ha was proclaimed Kopaonik National Park. The Kopaonik National Park is located in the municipalities of Raška and Brus, and the protection zone also in the area of Leposavić Municipality [64]. This research included the active Belo Brdo–Zaplanina mine in the Zaplanina area and abandoned mines Gvozdac, Suvo Rudište and Raičeva Gora (Figure 1).



**Figure 1.** Location map of Kopaonik Mountain.

Three mines (Gvozdac, Suvo Rudište and Zaplanina) are located in the Kopaonik area, which has been proclaimed as a National Park and nature reserve protected by the state of Serbia, while the Raičeva Gora mine is outside the borders of the National Park (NP) and its protective zone (Figure 2). Gvozdac is located on the site of “Metode”, which is in the regime of I degree (I zone) of nature protection, while Suvo Rudište and Zaplanina are in the third zone of nature protection. The Belo Brdo mine, which is not subject to exploration and is part of the Zaplanina–Belo Brdo mine system, is located in the zone that represents the external protection (protective zone) of the Kopaonik NP.



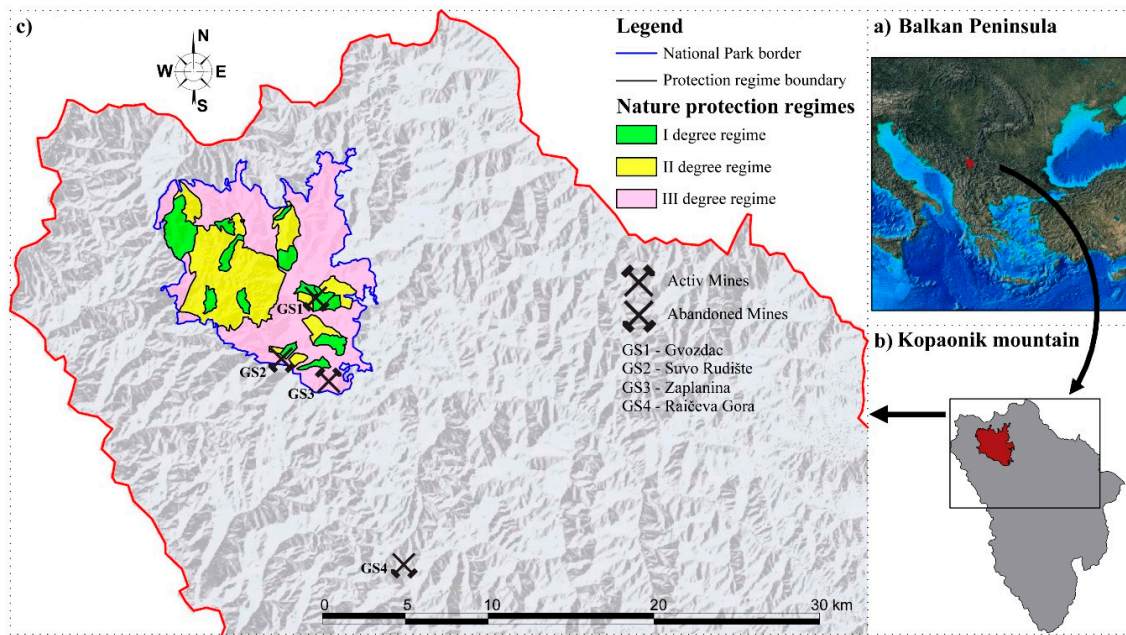


Figure 2. View of mines and protection zones in Kopaonik area.

Mining was intensively carried out in Kopaonik in the XIV and XV centuries. Although the exploitation of non-ferrous and precious metals was occasionally interrupted, it lasted from Roman times until the end of the XVII century, while in the XVIII and XIX centuries the exploitation of these metals ceased and, on the other hand, the mining of iron developed. In all periods, mining was the main or significant economic activity in the area [65].

## 2.2. Description of the Locality

The mines explored are archeological sites that have significant geotourism value, but are also the subject of numerous environmental issues in order to protect the Kopaonik NP and its protection zone.

Today, these mines represent valuable geoheritage sites where tourism can be developed. The localities can be developed independently and in complementarity with other localities that are protected by law as reserves or nature monuments in the area of Kopaonik National Park. The development of tourism in these once economically important localities, settlements can bring economic benefits and re-empower them, since this is an economically and demographically disadvantaged area.

The Kopaonik massif belongs to the outer Vardar subzone and is located between the Drina-Ivanjica element in the west and the central Vardar subzone in the east. The base of the Kopaonik massif is built by granodiorites (Oligocene), which project to the surface in the central part. In the lower regions, above them lie a suite of Triassic and Paleozoic metamorphites, ophiolite melange and ultramafites [66].

*Gvozdac* ( $GS_1$ ) is a name for steep, almost vertical cliffs from porphyroid quartzmonzonite above the canyon of the Gvozdacka river. It is located in the first zone of protection of the Metode site, within which there is a cave church (shrine) called Metode. Metode and Jelak form a unique whole, as separate localities and degrees of nature protection. North of the Gvozdac site, there is the Bela stena site, which is also in the first degree of nature protection regime. The central parts of the Kopaonik Mountain, to which the Gvozdac mine belongs, are made of granodiorite, a normal granular structure dating from the Neogene period (Kopaonik Pluto). The wider surroundings is composed of crystalline shales, dolomites, marbles and calcic shales as well as a series of sericite chlorite shales (Paleocene) (Figure 3) [66]. The Gvozdac locality next to the caves is also characterized by the Gvozdac spring, which is a fracture spring. The heat occurs in the zone of 30–35 m wide at the contact of cracked and tectonically disturbed marble limestones and an impermeable hydrogeological barrier, represented

here by the granodiorite platon. The water springs are clear and do not get dirty even with heavy rainfall and snowmelt, and are also chemically completely correct for drinking. During the exploration of the ore body, from the exploration well, at a pressure of 1.5–2 l/s, a hydrological phenomenon occurs within the magmatic granodiorite breakthrough called the geyser Gvozdac [61]. North of this locality, at Jelica, i.e., from Jaram (1.788 m) to Srebrnac, all varieties of skarns can be traced from their contact with granodiorite to weakly metamorphosed limestones. This cites characterizes rarity, accessibility and practical educative value, making it a geoheritage object worth of protecting. In the inventory list of geoheritage objects in Serbia, it is included in the group called “Igneous and metamorphic rocks” as “Outcrops of skarns-Jaram, Kopaonik”. Steep limestone escarpments (bele stene) on the left side of the road Brzeće-Kopaonik, in a part known as Zavoj (curvature), were named Žljeb due to their well-expressed curves (1.772 m) (Figure 4). Bele stene (white rocks) were formed along a fault that separate two distinct lithologies: metamorphic rocks below and carbonate rocks above. Transition from one to another lithology is obvious [60].

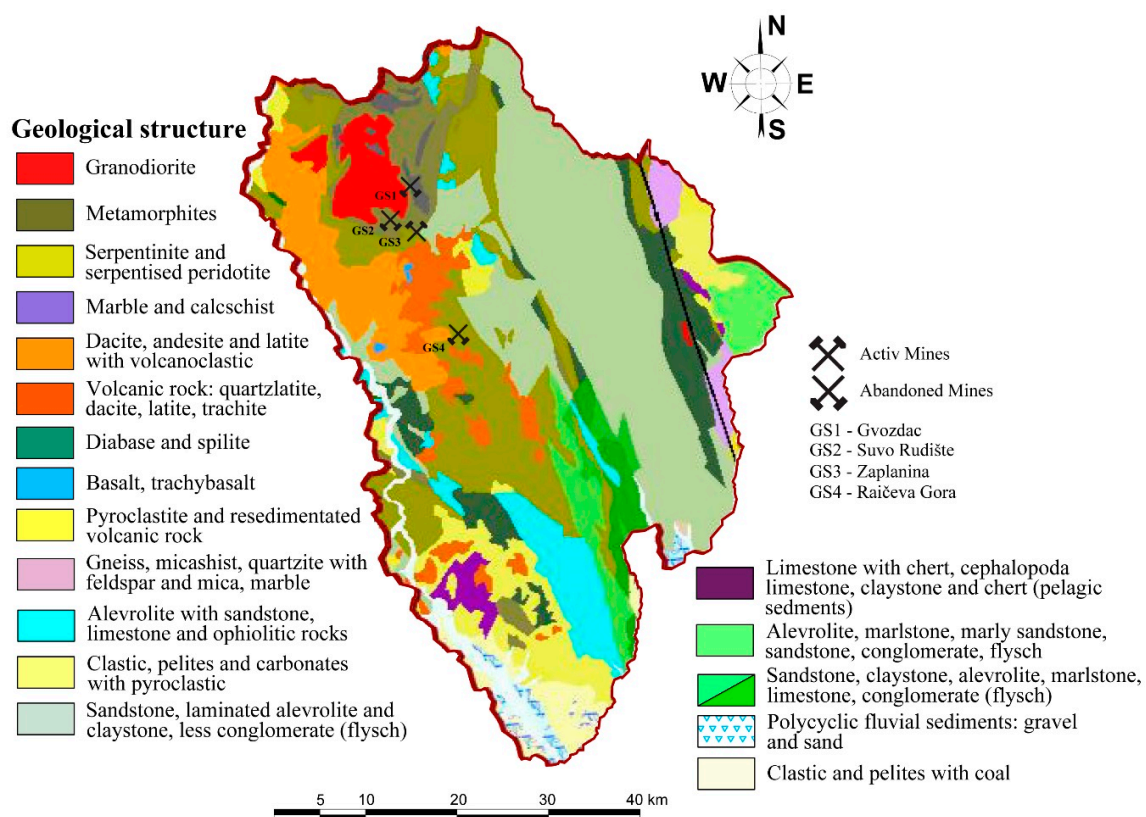


Figure 3. Geological structure Kopaonik area [66].





**Figure 4.** (A) Mining shaft; (B) cave church “Metode”; (C) geyser “Gvozdac”; (D) mountain pass “Zavoj”; (E) skarns in Jaram.

*Suvo Rudište* ( $GS_2$ ) is an ore field beneath Pančić Peak, at an altitude between 1878 and 1970 m, known as the largest skarn and iron ore deposit. It extends from the northwest to the west, as the surface excavation of the amphitheater form resulted from intensive exploitation. The mine is in a series of sericite chlorite shales and phyllites from the Paleocene period. It is characterized by low crystallinity and consists of quartz, sericite, chlorite, biotite, zircon, apatite and tourmaline. In the immediate vicinity are the Paleozoic crystalline limestones, dolomites, marbles and calcic formations that make up the central Kopaonik series (Figure 3) [66]. The contour is identified with the contact-metamorphic halo of Triassic sediments at the core of which is the granodioritic intrusion of Kopaonik. Today, a depression of an ellipsoidal shape with a diameter of 350–200 m remains on the ledge, which makes about 7 ha of horizontal projection with lateral extensions of about 2–2.5 ha on the accompanying active surface [61]. The exploitation of the ore was also carried out by a cave route. Thus, below the surface there is a large number of cave rooms from which underground mine waters nowadays come from. The mine field is located directly next to the high pyramid, which is at the top of the second elevation point in Kopaonik (1976 m) and the site of Suvo Rudište, which belongs to the first degree of protection. This site includes Pančić Peak (2017 m) and the northeast slopes of Suvo Rudište. These areas have beautiful views. The area is 2 km away from the tourist settlement, connected by cable cars and is 3 km by car. The moderately steep slopes of these peaks were used as the slopes (Figure 5).



**Figure 5.** (A,B) Surface excavation at an ore field “Suvo Rudište”; (C) tailings at an ore field; (D) Pančić Peak; (E) view from the ore field to the tourist center “Kopaonik”; (F) pyramid (1976 m).

*Belo Brdo–Zaplanina* ( $GS_3$ ) is a complex of underground mines of lead and zinc ore. It is located in the III degree of protection regime, 5 km southeast of Pančić Peak. The wider surroundings of the Belo Brdo deposits are built by geological formations of different ages, genesis and composition. Among them are the oldest rocks, the so-called Paleozoic metamorphites, which form the central part of Kopaonik, and are located in the immediate halo of the Kopaonik intrusive. In their geological structure, fracture structures as forms of deformation elements are highly expressed and present. In relation to general rendering, they are classified into longitudinal (NW–SE), transverse (NE–SW) and diagonal (E–W). The most significant, for the structure of the reservoir environment, is certainly the regional fault structure of the northwestern orientation on the stretch from “Vojetina” to “Šatorica”, which indicates the tectonic contact of serpentinite towards the rocks of the Triassic, Jurassic and Cretaceous ages (Figure 3) [61]. Ore exploitation began in 1933. For the purposes of mining activities in 1936, a tunnel 2.5 km long was dug, which served as the main road for the export of ore from all horizons in the Belo Brdo and Zaplanina mine complex, which, at that time, represented the technological and production unit. Remains of old mining pits are visible in the mining area of Mount Vojetina.

Zaplanina is higher and, in its highest part, the entrance to the shaft was at an altitude of 1425 m, today this shaft is almost invisible because it collapsed; the major mine shafts lie at an altitude of 1235 m. They are entered via a mining elevator from Belo Brdo, the lower part of the mine [65]. There is a northeast entrance to the mine in Zaplanina which is no longer active today. Today, there is a small number of local people in this mine who are assigned to maintenance work. Immediately next to the Zaplanina is the Jelovarnik site, which belongs to the first degree of nature protection regime. It encompasses both valley sides of the watercourse that flows below Pančić Peak (2017 m) and Neveske stolice Peak (1913 m). The main feature of the site is the cascading waterfall which is 71 m high. The waterfall is a hydrological monument of nature under strict protection (Figure 6).



**Figure 6.** (A,B) Mining facilities in Zaplanina; (C) a mine shaft in Zaplanina; (D) waterfall “Jelovarnik”.

*The Raičeva Gora Mine* ( $GS_4$ )—the deposit of lead-zinc ore and antimony is found in quartzlatites of neogene age. The wider area is made up of Harzburgites of Triassic age (Figure 3) [66]. The site is located on the mountain slope of the Belo Brdo–Zaplanina mine, at an altitude of 1300–1400 m (Figure 7). It was opened in 1963, only to be closed after four years due to the fall in the price of this metal in the world market. In the year 1977 production at the mine was restored and at the beginning



of the 1980s, new surface and deep mining–geological surveys were carried out. Along with the innovations in mechanization and mining equipment, access roads were made to the site. The mine built a 12 km long transmission line from the Belo Brdo mine. A telephone line, water supply and other infrastructure elements were added. With two horizons, 1220 and 1175 m above sea level, the ore was being descended to the point of flotation. During the period from 1978 to 1984, the mine suffered a crisis which was further contributed to by the devastating earthquake of 1980 with the epicenter not far from the mine. At the end of 1991 it ceased to operate [65]. With its activity, the mine revived mountain settlements in this area and slowed down migration processes on the village–city route, but with the closure of the mine, the settlements disappeared. Upon the closure of the mine, larger quantities of basalt ore were found in its wider surroundings, but despite detailed exploration, the exploitation was not realized. The mine is located 8 km away from the regional road Kuršumljica, Kopaonik, from the settlement Blaževo.



**Figure 7.** (A) Raičeva gora; (B) antimony ore sample from the site; (C,D) mine shafts.

### 2.3. Methods

The survey included three abandoned mines (Gvozdac, Suvo Rudište and Raičeva Gora) and one which is active (Belo Brdo–Zaplanina). These mines have not been the subject of significant exploration, and consequently there has been no tourist valorization. The geosite evaluation (GAM method) will give ratings for several thematic value groups that are classified into two basic value groups (main and additional), while evaluating critical issues: Soil Contamination, Water Contamination, Acid Mine Drainage, Visual Impact and Hydrogeomorphological Impact; and Positive Values: Geological Value, Landscape and Ecological Value, Historical Mining Value, Archeological Value and Touristic Value, and get total grades that will be determined by partial values. By comparative analysis of the obtained results, by different methods, we will get information on which of the analyzed fields require more attention and better management in the future in order for these sites in the of Kopaonik area to attract tourists.

Two completely independent methods were applied in the study. The first (GAM) method, scientifically based and verified in highly ranked scientific journals, has been applied to determine the geotourism values of mines, a method which is supported by the research objective. This method pointed out to us advantages and disadvantages of individual indicators. Since the research has a twofold aim, to carry out an assessment of ecological values in addition to geotourism values, (ecological status), another method, also scientifically based and verified, was applied, consisting of two groups of questions: critical and positive. Although independent of the first method, in one part there appears to be a match of positive values/questions with one small part of the questions and

indicators in the GAM method. We have neglected this, and all authors agree that it is necessary to apply both methods independently in the given form, in order to achieve the set goal of the research. Among other things, it is only through the full application (in terms of critical issues and positive values) of the method for the assessment of ecological values (ecological status) that it is methodologically possible to establish a final assessment. On the other hand, the GAM method is more complex and contains more indicators and subindicators, therefore it is more relevant for the achievement of the first research objective (determination of geo-tourist values).

The research consists of two phases. During the first phase, the bibliographies are collected: scientific and professional papers, old records, books, guides, lexicons; technical records: mining plans, old maps, legal records; old paintings, photographs, drawings, processing of collected data and GIS visualization of the mine. The second phase concerns field research and interviewing of the local population, conducted between May and August 2019.

In the second phase of the research, two scientifically based methods were applied. The first is the Geosite Assessment Model (GAM) scientifically based for geolocation evaluation purposes. The model was created by Vujičić et al. [54] based on a numerous scientific works in the field of evaluation [46,67–75] and it was scientifically established later on [49,60,76]. This method evaluated the subindicators, on the basis of which the assessment of the geo-tourist values of the mine was determined.

The GAM consists of two groups of values: main values (MV) and additional values (AV) (Table 1).

**Table 1.** The structure of Geosite Assessment Model (GAM).

		<b>Main Values (MV)</b>				
		0.00	0.25	0.50	0.75	1.00
<i>Scientific Educational/Value (VSE)</i>						
1	Rarity (number of the same localities in the immediate area).	A common occurrence	Regional	Nacional	International	Unique
2	Representativeness (didactic and school characteristics of localities based on their quality and configuration).	None	Low	Medium	High	The highest
3	Level of site research (number of publications in scientific journals).	None	Local publications	Regional publications	National publications	International publications
4	Level of interpretation (possibility of interpretation of geological and geomorphological processes, phenomena and forms).	None	Intermediate level–difficult to explain	Good example–difficult to explain	Medium level–Easy to explain	Good example and easy to explain
<i>Scenic/aesthetic value (VSA)</i>						
5	Lookout points (number of lookouts within 1 km of the site).	None	1	2 to 3	4 to 6	More than 6
6	Area (total area of the site relative to other sites).	Small	-	Medium	-	Big
7	Landscapes and nature in the surroundings (panoramic view quality).	-	Low value	Medium	High	The highest
8	Fitting the locality into the environment (degree of contrast with nature).	It does not fit	-	Neutral	-	Fits in
<i>Protection (VPr)</i>						
9	Current state of geosite.	Completely destroyed	Very damaged	Moderately damaged	Moderately damaged	Undamaged
10	Level of site protection (by local and regional associations, national or international institutions).	Unprotected	Protected locally	Protected regionally	Protected nationally	Protected internationally
11	Geosite sensitivity level.	Beyond repair	High	Medium	Low	It cannot be seriously damaged
12	The corresponding number of visitors to the site.	0	0 to 10	10 to 20	20 to 50	More than 50



Table 1. Cont.

Additional values (AV)						
<i>Functional values (VFn)</i>						
1	Possibility of access to the site.	Inaccessible	Low (only by foot)	Medium (by bicycle)	High (by car)	The highest (by bus)
2	Additional natural values within 5 km.	None	1	2 to 3	4 to 6	More than 6
3	Additional anthropogenic values within 5 km.	None	1	2 to 3	4 to 6	More than 6
4	Proximity to emission centers.	More than 100 km	100 to 50 km	50 to 25 km	25 to 5 km	Less than 5 km
5	Proximity to important roads within 20 km.	None in the vicinity	Local road	Regional road	National road	International road
6	Additional functional values (parking lots, gas stations)	None	Low	Medium	High	The highest
<i>Tourist values (VTr)</i>						
7	Level of promotional activities.	None	Local	Regional	National	International
8	Number of visits to the geosite.	None	Less than 12 a year	From 12 to 24 a year	From 24 to 48 a year	More than 48 a year
9	Proximity of visitor centers to the geosite.	More than 50 km	From 50 to 20 km	From 20 to 5 km	From 5 to 1 km	Less than 1 km
10	Interpretive panels that fit the environment.	None	Low quality	Medium quality	High quality	The highest quality
11	Annual number of visitors to the geosite.	None	Low (less than 5000)	Medium (from 5001–10,000)	High (from 10,001 to 100,000)	The highest (more than 100,000)
12	Tourist infrastructure (hiking trails, rest places, toilets).	None	Low level	Medium level	High level	The highest level
13	Level of guidance service expertise.	None	Low quality	Medium quality	High quality	The highest quality
14	Accommodation services near geolocation.	More than 50 km	25–50 km	10–25 km	5–10 km	Less than 5 km
15	Restaurant services near geosite.	More than 25 km	10–25 km	10–5 km	1–5 km	Less than 1 km

Main values (*MVs*) arise from the natural characteristics of the geosites and are made up of three groups of indicators: scientific/educational value (*VSE*), landscape/aesthetic value (*VSA*) and protection (*VPr*). Additional values (*AV*) are created by human influence and adaptation for them to be used by visitors. They are made up of two groups of indicators: functional (*VFn*) and tourist value (*VTr*) [54]. A total of 12 *MV* subindicators and 15 *AV* subindicators are estimated to be 0.00, 0.25, 0.50, 0.75 and 1.00, which defines *GAM* as the following equation [76]:

$$GAM = MV + AV. \quad (1)$$

The following two equations are derived from the groups of subindicators:

$$MV = VSE + VSA + VPr, \quad (2)$$

$$AV = VFn + VTr, \quad (3)$$

i.e.,

$$MV = VSE + VSA + VPr = \sum_{i=1}^{12} SIMV_i, \text{ where } 0 \leq SIMV_i \leq 1, \quad (4)$$

$$AV = VFn + VTr = \sum_{j=1}^{15} SIAV_j, \text{ where } 0 \leq SIAV_j \leq 1, \quad (5)$$

For the purpose of graphical representation of the evaluation results, a *GAM* matrix has been created, which is divided into nine fields (zones) using a grid, denoted  $Z(i, j)$  ( $i, j = 1, 2, 3$ ). The matrix consists of the *X* (*MV*) and *Y* (*AV*) axes, which represent the geosite values. The main lines of the network have values of four units on the *X* and five units on the *Y* axis. Depending on the grade, the estimated geosite occupies a certain field, which clearly determines its value and, depending on the main values, the existence of so-called “tourist value”.

The second method relates to the evaluation of the parameter from which the total value of environmental issues is derived. The estimation model used was performed according to the methodology used by Marescotti et al. [77] on the example of the sulfur mines of the Gromolo and Petronio valleys of Eastern Liguria in Italy. The reason for choosing this methodology stems from the subject matter of this study, and the research concerns evaluation of critical issues (*CI*) and positive values (*PV*). Given groups of values are made up of five values for the assessment, from zero to four. The assessment of the ecological status of the sites, together with the assessment of geo-tourism values, was carried out by a group of six experts from the relevant fields based on their observations. The estimated values are given using the following numerical values: 0 (Zero), 1 (Low), 2 (Medium), 3 (High) and 4 (Very high).

A group of experts obtained preliminary information from the field research on the mine’s ecological status, potential problems and risks based on easily visible changes in the field in the form of visual degradation of the mine (landslides, collapses, excavations, landfills and disposal of mine waste and other damaged soils, pollution and water turbidity). This is a form of strategic environmental impact assessment that indicates the need to encourage future specialized experimental research. For this research, based on the criteria according to the methodology applied [77], was assigned a numerical value for each question, qualitative and quantitative research. The sum of these partial values determined the overall score.

Evaluation of the critical issues (*CI*) consists of the following elements: Soil Contamination (*Sc*), Water Contamination (*Wc*), Acid Mine Drainage (*Ad*), Visual Impact (*Vi*) i Hydrogeomorphological Impact (*Hi*) (Table 2).

**Table 2.** Evaluation scores for critical issues (CI).

Value	Score	<i>CI-1. Land Pollution</i>
Very High	−4	Pollution is spreading throughout the mining area, including tailings pits, waste stone dumps, open pits, factories, etc.
High	−3	Pollution mainly concerns mining structures and infrastructures throughout the mining area.
Medium	−2	Pollution is present at given sites and is reduced to mining structures (open pits, tunnel entrance, small deposits of waste stone, etc.).
Low	−1	Pollution occurs locally in several places throughout the mining area.
Zero	0	No land pollution
Value	Score	<i>CI-2. Water pollution</i>
Very High	−4	Water pollution is present in the wider mining area, including mining water and natural waters.
High	−3	Water pollution mainly refers to the mining water circulating in or collecting within the mining area.
Medium	−2	Water pollution is present in several localities.
Low	−1	Water pollution is minimized.
Zero	0	No pollution.
Value	Score	<i>CI-3. Mining acid running off</i>
Very High	−4	Mineral acid swelling is possible and persistent. Acidic water spreads through the mining area, thus polluting natural waters.
High	−3	Mineral acid swelling is possible and persistent. Acidic waters are reduced to or collected by mining waters that circulate through the mining area.
Medium	−2	Mineral acid swelling is possible and persistent. Acidic water is present in some specific places.
Low	−1	Mineral acid swelling is possible and persistent. Acid waters have been reduced to only a few specific places.
Zero	0	Swelling of mining acid is almost impossible.
Value	Score	<i>CI-4 Visual influence</i>
Very High	−4	The spread of decomposed elements and degraded spaces is present throughout the whole area and in the environment.
High	−3	The spread of decomposed elements has been reduced to mining space.
Medium	−2	The decomposed elements are visible only in certain places within the mining area.
Low	−1	Several decomposed elements are visible at a couple of sites within the mining area.
Zero	0	No decomposed elements in the mining area and in the environment.
Value	Score	<i>CI-5 Hydrogeomorphological influence</i>
Very High	−4	Important due to the presence of underwater and surface excavations, waste stone landfill and tailings dams throughout the mining area. Landslides, evidence of accelerated erosion, subsidence, sinking and other key features are spreading.
High	−3	Most of the key issues are reduced to specific places within the mining area.
Medium	−2	Exclusive presence of underground excavation. Waste stone landfills have been reduced to one or two sites. Other key issues are present but not spreading.
Low	−1	Exclusive presence of underground excavation. Waste stone landfills are limited in size and other key problems are rare.
Zero	0	The exclusive presence of underground excavation and the absence of landfill dumps. Other key problems are not present.



*Soil Contamination (Sc)*: soil contamination depends on the presence of toxic elements in the exploited ore. In each of the four sites analyzed, the intensity of contamination is directly related to the extent of mining activity in the area, from the volume of underground and surface excavations, rock depots and disposal of waste materials, processing plants for ore extraction, surfaces for temporary storage, etc.

*Water Contamination (Wc)*: water contamination depends on the reactivity of the minerals of the exploited ore. The intensity of water pollution is directly related to the extent of mining activity in the area and to the geometry of the basin relative to the area of the mine.

*Acid Mine Drainage (Ad)*: acid mine drainage depends on the presence and relative volume of sulfides (mainly pyrites and pyroids) in the ore and/or rocks exploited. Pyrite and pyrrhotite are mainly non-economic minerals in polymetallic sulfide ores and are therefore usually discarded and deposited in rock deposits. The capacity of rocks and sediments to generate AMD can be calculated according to the Australian Mineral Industries Research Association (AMIRA) procedure [78]. If AMD is possible and continues over time, its intensity is directly related to the extent of mining activity in the area and to the basin geometry relative to the acid production sites.

*Visual Impact (Vi)*: the visual impact on mine sites has been evaluated based on the presence and visibility of degraded elements that induce contrast in shapes, textures and colors. These are particularly represented by mining activity remains with very low aesthetic quality or in an evident state of decay and changes in landscape and morphology. The class and relative score were assigned considering both the extent of the visual impact inside the site and the extent of the impact on the surrounding landscape evaluated outside the mining area. Other anthropic elements were also considered, even if not directly related to mining activities.

*Hydrogeomorphological Impact (Hi)*: the hydrogeomorphological impact within a mining area is mainly due to the strong surface modification of the former topography and the realization of underground excavations. These modifications can affect surface and groundwater circulation and create potential ground deformations, subsidence, and steep slope problems, thus inducing several geological hazards, such as floods and landslides. The class and the relative score, evaluated by geomorphological photointerpretation, the evaluation of mining plans and field investigations were assigned considering the extent of modification induced by mining activities and by verifying the presence of critical issues within the mining sites and in the surrounding areas.

$$CI = Sc + Wc + Ad + Vi + H. \quad (6)$$

Evaluation scores for positive values (*PV*) consists of the following elements: Geological Value (*Gv*), Landscape and Ecological value (*Lv*), Historic Mining Value (*Hv*), Archeological Value (*Av*) i Touristic Value (*Tv*) (Table 3).

$$PV = Gv + Lv + Hv + Av + Tv. \quad (7)$$

The total score (*TS*) consists of the summary assessment of partial scores of *CI* and *PV* according to the formula:

$$TS = (Gv + Lv + Hv + Av + Tv) + (Sc + Wc + Ad + Vi + Hi). \quad (8)$$

**Table 3.** Evaluation scores for positive values (PV).

<b>Value</b>	<b>Score</b>	<b><i>PV-1. Geological Value</i></b>
Very High	4	Within the mine and in the surrounding area, there are valuable geological elements.
High	3	Valuable geological elements are found within the mining area.
Medium	2	Geologically valuable elements are found in several localities within the mining area.
Low	1	Geologically valuable elements are found in one or more localities within the mining area.
Zero	0	There are no valuable geological elements in the mining area.
<b>Value</b>	<b>Score</b>	<b><i>PV-2. Landscape and Ecological Value</i></b>
Very High	4	There are ecological values in the mine and its environment with high landscape values and evocative elements.
High	3	In the area of the mine there are ecological values and landscapes of high quality and evocative elements.
Medium	2	Some environmentally friendly elements are present in the surrounding areas. A landscape with some scenic quality and evocative elements
Low	1	There are few environmentally friendly elements in the surrounding areas. The landscape is of poor scenic quality and with little evocative elements
Zero	0	There are no recognized environmental elements in this area. Landscape does not have a scenic quality or evocative elements
<b>Value</b>	<b>Score</b>	<b><i>PV-3. Historic Mining Value</i></b>
Very High	4	For the mine and the surrounding area, there are numerous valuable elements concerning mining history.
High	3	Valuable elements pertaining to the history of excavation within the mine site are present.
Medium	2	There are some valuable elements related to mining history within a mine site.
Low	1	There are few valuable elements related to mining history within the mine site.
Zero	0	Absence of valuable elements related to mining history.
<b>Value</b>	<b>Score</b>	<b><i>PV-4. Archeological Value</i></b>
Very High	4	The presence of archeologically valuable elements in the mine and the surrounding area is widespread.
High	3	There are several archeologically valuable elements in the mining area.
Medium	2	Archeologically valuable elements are found at one or more sites in the mining area.
Low	1	Archeologically valuable elements are present but not available.
Zero	0	Absence of archeologically valuable elements.
<b>Value</b>	<b>Score</b>	<b><i>PV-5. Tourist Value</i></b>
Very High	4	There are numerous tourist attractions and services in the area of the mine and in its wider environment.
High	3	Tourist attractions and services are present in the area and are linked to mining sites.
Medium	2	Some tourist attractions and services are present in the surrounding area, while mining sites are generally available.
Low	1	Several tourist attractions are present in the area, and mining sites are accessible with some difficulty.
Zero	0	There are no tourist attractions in the immediate vicinity of the mine.

### 3. Results

The final results of the analyzed geosites are presented in Table 4, and are presented graphically in Figure 8. The main values (scientific/educational, landscape/aesthetic and protection) record slight oscillations and range from medium to high levels of values. GS<sub>2</sub> has the highest scientific value (2.75). The reason is that the geosite is located at an altitude of over 1500 m and, as such, is unique in the wider area. It can serve as a good example of the interpretation of geological and geomorphological processes, phenomena and forms to the average visitor. Numerous Kopaonik researchers have written about this geosite. The GS<sub>3</sub> geosite has an intermediate level of scientific value, while GS<sub>1</sub> and GS<sub>4</sub> geosites have low scientific value. With their large number of viewpoints, vast areas, high panoramic views with hydrological phenomena and preserved vegetation, the analyzed geosites give high landscape/aesthetic values. As the geosites GS<sub>1</sub>, GS<sub>2</sub> and GS<sub>3</sub> are located in the area of Kopaonik National Park, research has confirmed that they belong to a high level of protection, while GS<sub>4</sub> belongs to a medium level of protection.

Compared to the smaller differences in the main values among the analyzed geosites, the differences are more significant in the additional values (functional and tourist values). GS<sub>2</sub> geosite has the highest functional value (4.00), it is characterized by the possibility of access to all visitors, the existence of natural and anthropogenic tourist values, the proximity of the mountain tourist center Kopaonik, as well as the highest level of other functional values. The GS<sub>1</sub> geosite (3.25) has a significantly lower functional value. The geosite is not available to all visitors. Mountain paths lead to the site, where there are hydrological sites and protected plant species, as well as other natural and anthropogenic tourist values. Not far from the site there is a main road with additional functional values in Brzeće, Srebrenac and Kopaonik. The functional value of the GS<sub>3</sub> geosite (2.75) is lower than the GS<sub>2</sub> and GS<sub>1</sub> geolocal values, which was influenced by the ability to access the geosite and a slightly larger distance from other functional values. The GS<sub>4</sub> geosite has the lowest functional value (2.00) among the analyzed geosites. It is characterized by a great distance from the broadcasting centers, important roads and other additional functional values. Research has shown that the differences between geosites are greatest in tourist values. The GS<sub>1</sub> and GS<sub>2</sub> geo-localities have developed tourist infrastructure and are attractive tourist sites, while the GS<sub>3</sub> and GS<sub>4</sub> localities do not have tourism infrastructure, but their possibilities for existence are different. The GS<sub>3</sub> geosite is 10 km away from accommodation and restaurant services (Fast), and the GS<sub>4</sub> geosite is much longer.

**Table 4.** Overall evaluation of the analyzed geosites using the Geosite Assessment Model (GAM).

Name of Geosite	Main Values		Additional Values		Field
	VSE + VSA + VPr	Σ	VF <sub>n</sub> + VTr	VSE + VSA + VPr	Σ
Gvozdac (GS <sub>1</sub> )	2.25 + 2.25 + 2.50	7	3.25 + 7.00	10.25	Z <sub>23</sub>
Suvo Rudište (GS <sub>2</sub> )	2.75 + 3.25 + 2.75	8.75	4.00 + 8.50	12.50	Z <sub>33</sub>
Belo Brdo-Zaplanina (GS <sub>3</sub> )	2.50 + 3.75 + 2.50	8.75	2.75 + 2.00	4.75	Z <sub>31</sub>
Raičeva Gora (GS <sub>4</sub> )	2.25 + 3.50 + 2.25	8.00	2.00 + 1.25	3.25	Z <sub>21/31</sub>
<b>Mean value</b>	-	8.13	-	7.69	-

Comparing the final results for all four geosites, we can see that the differences in the principal and additional values, as well as their positions in the GAM matrix, prevail (Figure 8). The GS<sub>2</sub> locality has the highest value, it belongs to the Z<sub>33</sub> field, which indicates a high level of major and tourist values. Field Z<sub>23</sub>, shows the mean of the main and the high level of additional values, and the geosite of GS<sub>1</sub> is found in this field. The GS<sub>3</sub> and GS<sub>4</sub> localities emphasize the differences between main and additional values, localities have high main values, but low additional ones. Thus, the locality GS<sub>3</sub> was located in field Z<sub>31</sub> and the locality GS<sub>4</sub> was located at the border between fields Z<sub>21/31</sub>. The low values at these sites concern additional functional and tourist values, and the result can be the basis for



the development of future tourism development strategies in the Kopaonik area, especially for sites that have high scientific and landscape values, as well as the level of protection.

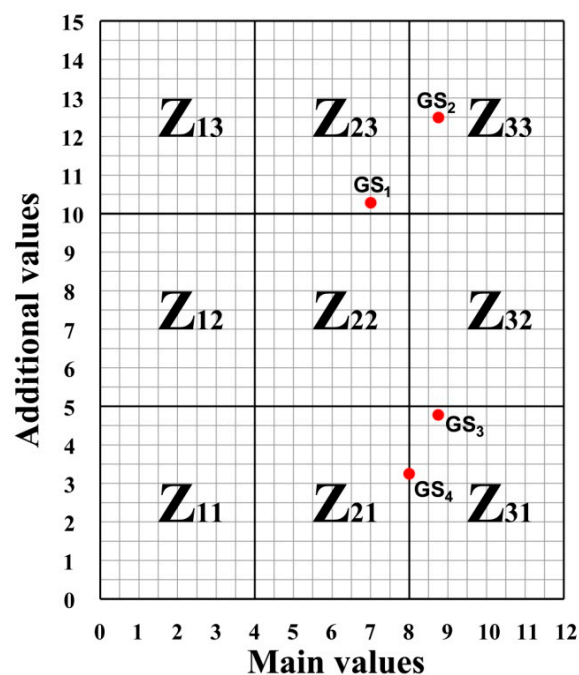


Figure 8. Location of estimated geosites in the GAM matrix.

One of the major drawbacks is the accessibility, promotion and organization of visits as well as a quality guide service. More qualified guides are needed, preferably from the geological or related profession, or from the field of geosciences. Not far behind these activities and amenities, there are also elements such as interpretative boards and tourist infrastructure. GS<sub>1</sub> and GS<sub>2</sub> are geolocalities that are on the list of tourist visits to Kopaonik National Park and, as such, should be presented to local and foreign tourists as much as possible, while deficiencies in the GS<sub>3</sub> and GS<sub>4</sub> geosites must be eliminated in order to develop tourism and sustainable economic development of the settlements in the area.

The overall results of the evaluation of critical issues and positive values of abandoned Gvozdac, Suvo Rudište and Raičeva Gora mines and partially abandoned Belo Brdo–Zaplanina mine in the Zaplanina area are given in Table 5.

Mining activities, such as mine exploitation, ore processing and waste disposal in landfills are worldwide sources of heavy elements in the surface environment [79]. In mining sites, soil is an environmental compartment commonly contaminated by heavy elements, mainly through wet and dry depositions of emissions from smelters and the runoff of waste accumulated in dumps. Since the closure of the mine to the present day, Suvo Rudište and Raičeva Gora have been completely abandoned and, thus, present a source of unresolved environmental problems and a danger to living beings.

Suvo Rudište is the largest and most important mine in Kopaonik area, which has low values for soil and water pollution when it comes to critical issues, but leaving large surface and underground mines in the mine field without taking special protection measures poses a great threat to human and animal safety—especially since the mines are located directly along the ski slopes of this largest mountain tourist center in Serbia.

Raičeva Gora has the highest number of reward points, plenty of mining waste and other abandoned infrastructure that affects soil contamination. The physical and chemical characteristics of this waste, together with mine water, affect the environment. Frequent rainfall in these mountainous areas, which is especially pronounced in the spring months, completely changes the chemical composition of the Toplica River, which runs along its entire length along arable land. The visual impact

of the ore fields disrupts the overall visual appearance that nature has created in this area. The created tailings from accumulated mining waste in some locations can cause landslides and avalanches.

Part of this exploration is the area of Zaplanina, which is part of the Belo Brdo mine, where the northeast entrance to the mine was located. Today, there are ancillary facilities in this area that house miners in charge of mine maintenance and there also remains a part of the mining infrastructure. The site has recorded several sites with soil and water pollution, which represents a low level of critical issues.

The least critical issues are the Gvozdac mine, which has visible traces of exploration but no significant traces of exploitation. The mine is located at the largest spring in Kopaonik, known as the Gvozdacka Vrela. The rocks are of such composition that they do not affect water pollution, and the area is arranged on footpaths and accessible to visitors.

**Table 5.** Total scores for the four mines studied.

Mining Site		Gvozdac (GS <sub>1</sub> )	Suvo Rudište (GS <sub>2</sub> )	Belo Brdo-Zaplanina (GS <sub>3</sub> )	Raičeva Gora (GS <sub>4</sub> )
Critical Issues	Soil Contamination (CI1-Sc)	0	−1	−1	−3
	Water Contamination (CI2-Wc)	0	−1	−2	−2
	Acid Mine Drainage (CI3-Ad)	0	−1	−2	−2
	Visual Impact (CI4-Vi)	−1	−2	−1	−2
	Hydrogeomorphological Impact (CI5-Hi)	0	−3	−2	−2
<b>Partial Score</b>		<b>−1</b>	<b>−8</b>	<b>−8</b>	<b>−11</b>
Positive Values	Geological Value (PV1-Gv)	3	4	2	2
	Landscape and Ecological value (PV2-Lv)	4	4	4	3
	Historic Mining Value (PV3-Hv)	4	4	4	3
	Archeological Value (PV4-Av)	2	3	3	3
	Touristic Value (PV5-Tv)	3	4	2	1
<b>Partial Score</b>		<b>16</b>	<b>19</b>	<b>15</b>	<b>12</b>
<b>Total Score</b>		<b>15</b>	<b>11</b>	<b>7</b>	<b>1</b>

Other than critical issues, the most positive points go to the “Suvo Rudište” ore field, which extends at high altitudes, in an area that has large geological, archeological and tourist potentials. There are beautiful views on all sides of the mine field, the area is easily accessible to all visitors—it is located below Pančić Peak (2017 m) and within the Suvo Rudište Nature Reserve, which belongs to the first degree of the nature protection regime.

Belo Brdo–Zaplanina mine is a unique entity that cannot be taken into consideration for tourism because the administrative line separating central Serbia with Kosovo and Metohija crosses the highest parts of this mine and, thus, diminishes its tourist significance. This mine is of great historical and archeological value; natural values allow the development of tourism, but this is limited only to the part of the mine located in Zaplanina.

The abandoned Gvozdac mine, with the Gavranovac Peak, the iron hot springs, geyser Gvozdac and the Metode shrine, is one of the must-see excursions sites for visitors (tourists) who come to Kopaonik. The Metode and Jelak nature reserves make the area attractive for tourists. Arranged footpaths, resting places, signposts and interpretative signboards make the area significant for tourism and have the highest positive value in overall results.

The least positive values in the overall results go to the abandoned Raičeva Gora mine. The large number of negative points, the great distance from the main tourist center on Kopaonik as well as the distance from the main road, without tourist infrastructure, makes the area unattractive.

In the designated sites, negative environmental issues relate to soil pollution due to the accumulation of mining waste (tailings) and water pollution due to the runoff of mining waters in certain designated places. This ecological status in the areas of abandoned mines with certain plans of rehabilitation and reclamation can offer the opportunity for tourism development.

In the field survey, the local population in the immediate vicinity of the mines and tourists located on Kopaonik (Brzeće, Pančičev vrh and Kopaonik tourist resort) were interviewed. On this occasion, several conclusions were reached. The *Gvozdac* locality is well presented to tourists, with clearly marked trails, resting places, interpretative boards, etc. The tourists recommend the area to all other potential tourists due to the fact that it has different forms of geo-heritage and should be visited. Tourists visit this site during the winter tourist season, with the highest number of visits being recorded in summer. The *Suvo Rudište* locality is impressive to tourists. The need for expert guides is emphasized in order to provide tourists with knowledge about the development of mining at Kopaonik, and a higher level of protection in the area of the abandoned mine. Tourists are present at this site throughout the year, but the tourist values of this site are visible in periods without snow. The *Zaplanina* locality is not on the Kopaonik tourist map, but tourists are aware of its archeological and historical importance. Tourists would visit the site to get a more complete picture of the time and manner of active mining in Kopaonik. Tourists are actively visiting tourist sites in the immediate vicinity of the mine, while the evaluation of tourist potentials at the site has especially been welcomed by the locals, who emphasize their willingness to participate in the tourism development process. The location of the abandoned *Raičeva Gora* mine is completely unknown to Kopaonik tourists. The locals share the view that the revitalization of this once very important economic object for tourism purposes would bring life back to the settlements. The idea of a group of researchers has been warmly received by the locals and they emphasize their willingness to actively participate in the tourism development process.

#### 4. Conclusions

After many years of research in the area of Kopaonik and getting to know all the tourist values in this area, the need to assess all the negative impacts and positive values associated with the presence of abandoned and partially active mines arose, in order for them to be restored and included on the tourist map of Kopaonik. In this study, two parallel assessments were made: an assessment of tourism values and an assessment of environmental issues. These are preliminary assessments that provide a very important driving force for local development and define further directions for research.

The reconstruction of abandoned mines and putting them into the function of tourism requires a large amount of information to be collected, assessing the possibilities for their reconstruction, making a plan for their reconstruction and implementation. Based on the results of the research, it is necessary to carry out a procedure and make a plan for the elimination of all negative impacts on the sites, as well as a plan for exploiting all the positive values that may affect the development of tourism at the sites and in their surroundings. The results of the research showed that the assessment of tourism potential coincides with the results of the assessment of positive values for environmental issues at the sites, thus confirming the fact that the analyzed geosites can be put in the function of tourism development, which imposes the need to eliminate all negative criteria. The Kopaonik area is very attractive in terms of geology, geomorphology, hydrogeology, climate and biogeography, and the tourist valorisation of abandoned mines in this area can contribute to the greater attractiveness of the area itself. These geo-localities do not have the ability to independently attract the attention of tourists, but in the tourist offer they can be found in complementarity with the tourist sites in their surroundings. This is a polyvalent tourist area where several types of tourism can be developed. According to its attractive features, Kopaonik has pronounced recreational features, while, in the tourist market, Kopaonik is recognized as a mountain tourist center with a pronounced sports manifestation function at national and continental levels.

One of the main problems for tourists in the mining area is the issue of protection, especially in the areas of surface and underground mines. As none of the analyzed mines initiated the technical and technological process of rehabilitation and reclamation, some of the analyzed sites are inaccessible to tourists (Zaplanina and Raičeva Gora). As the funds for these purposes are obtained from the budget of the Republic of Serbia, such projects of local self-government (Bruce and Raska) will not be financially burdensome. The results of the study indicate the need to protect those local self-governments.



The results play a special role in tourism development strategies in the observed area. In order to develop tourism, the strategies maximize positive values and minimize negative ones, seizing all opportunities and preventing all threats.

The local population has an indispensable role in the development of tourism in this area. Any positive change is intended to change the visual appearance of the settlement and the overall economic development of the area.

According to the tourist attractions and conditions for the development of tourism, abandoned mines on Kopaonik have modest properties and, as such, they can develop in terms of tourism in complementarity with other tourist values in the area.

The methodology applied in this research could be improved in two segments in the future. First of all, the methodology for evaluating geolocality on mine examples should be reduced in the section for the assessment of geological and geomorphological parameters as well as protection parameters. Secondly, besides the expert evaluation, tourists should be included in the evaluation of tourist values. The reduction of the existing method and the inclusion of tourists in this part of the research would not prove relevant, as some localities are still inaccessible for tourist visits.

**Author Contributions:** D.V., and D.R. (Dragan Radovanović) conceived of the presented idea; M.I., and D.R. (Dušan Ristić) analyzed and elaborated the data for the GIS-based database; D.V., R.I., D.R. (Dragan Radovanović), J.D., and N.M.-B. contributed to the historical research and field survey; M.I., and D.R. (Dušan Ristić) made the figures. All authors discussed the results and contributed to the final manuscript. All authors have read and agreed to the published version of the manuscript.

**Funding:** This research received no external funding.

**Conflicts of Interest:** The authors declare no conflict of interest.

## References

1. Li, J.; Yang, L.; Pu, R.; Liu, Y. A review on anthropogenic geomorphology. *J. Geogr. Sci.* **2017**, *27*, 109–128. [[CrossRef](#)]
2. Crutzen, P.; Stoermer, E. The “anthropocene”. *IGBPNewsletter* **2000**, *41*, 17–18. [[CrossRef](#)]
3. Kubalíková, L.; Kirchner, K.; Kuda, F.; Machar, I. The role of anthropogenic landforms in sustainable landscape management. *Sustainability* **2019**, *11*, 4331. [[CrossRef](#)]
4. Baczyńska, E.; Lorenc, M.W.; Kaźmierczak, U. The landscape attractiveness of abandoned quarries. *Geoheritage* **2018**, *10*, 271–285. [[CrossRef](#)]
5. Callender, E. Heavy metals in the environment—Historical trends. *Treatise Geochem.* **2003**, *9*, 67–105.
6. Pavoni, E.; Covelli, S.; Adami, G.; Baracchini, E.; Cattelan, R.; Crosera, M.; Higuera, P.; Lenaz, D.; Petranich, E. Mobility and fate of Thallium and other potentially harmful elements in drainage waters from a decommissioned Zn-Pb mine (North-Eastern Italian Alps). *J. Geochem. Explor.* **2018**, *188*, 1–10. [[CrossRef](#)]
7. Taylor, M.P.; Mackay, A.K.; Hudson-Edwards, K.A.; Holz, E. Soil Cd, Cu, Pb and Zn contaminants around Mount Isa city, Queensland, Australia: Potential sources and risks to human health. *Appl. Geochem.* **2010**, *25*, 841–855. [[CrossRef](#)]
8. Lu, J.; Lu, H.; Lei, K.; Wang, W.; Guan, Y. Trace metal element pollution of soil and water resources caused by small-scale metallic ore mining activities: A case study from a sphalerite mine in North China. *Environ. Sci. Pollut. Res.* **2019**, *26*, 24630–24644. [[CrossRef](#)]
9. Rodríguez, L.; Ruiz, E.; Alonso-Azcárate, J.; Rincón, J. Heavy metal distribution and chemical speciation in tailings and soils around a Pb-Zn mine in Spain. *J. Environ. Manag.* **2009**, *90*, 1106–1116. [[CrossRef](#)]
10. Nannoni, F.; Protano, G.; Riccobono, F. Fractionation and geochemical mobility of heavy elements in soils of a mining area in northern Kosovo. *Geoderma* **2011**, *161*, 63–73. [[CrossRef](#)]
11. Bačeva, K.; Stafilov, T.; Šajn, R.; Tănăselia, C.; Makreski, P. Distribution of chemical elements in soils and stream sediments in the area of abandoned Sb-As-Tl Allchar mine, Republic of Macedonia. *Environ. Res.* **2014**, *133*, 77–89. [[CrossRef](#)] [[PubMed](#)]
12. Stefanowicz, A.M.; Woch, M.W.; Kapusta, P. Inconspicuous waste heaps left by historical Zn-Pb mining are hot spots of soil contamination. *Geoderma* **2014**, *235–236*, 1–8. [[CrossRef](#)]

13. Alderton, D.H.M.; Serafimovski, T.; Mullen, B.; Fairall, K.; James, S. The chemistry of waters associated with metal mining in macedonia. *Mine Water Environ.* **2005**, *24*, 139–149. [[CrossRef](#)]
14. Dinelli, E.; Lombini, A. Metal distributions in plants growing on copper mine spoils in Northern Apennines, Italy: The evaluation of seasonal variations. *Appl. Geochem.* **1996**, *11*, 375–385. [[CrossRef](#)]
15. Xiao, T.; Guha, J.; Boyle, D.; Liu, C.Q.; Chen, J. Environmental concerns related to high thallium levels in soils and thallium uptake by plants in southwest Guizhou, China. *Sci. Total Environ.* **2004**, *318*, 223–244. [[CrossRef](#)]
16. Hammarstrom, J.M.; Seall, R.R., II; Meier, A.L.; Kornfeld, J.M. Secondary sulfate minerals associated with acid drainage in the eastern US: Recycling of metals and acidity in surficial environments. *Chem. Geol.* **2005**, *215*, 407–431. [[CrossRef](#)]
17. Audry, S.; Grosbois, C.; Bril, H.; Schäfer, J.; Kierczak, J.; Blanc, G. Post-depositional redistribution of trace metals in reservoir sediments of a mining/smelting-impacted watershed (the Lot River, SW France). *Appl. Geochem.* **2010**, *25*, 778–794. [[CrossRef](#)]
18. Grosbois, C.; Courtin-Nomade, A.; Martin, F.; Bril, H. Transportation and evolution of trace element bearing phases in stream sediments in a mining—Influenced basin (Upper Isle River, France). *Appl. Geochem.* **2007**, *22*, 2362–2374. [[CrossRef](#)]
19. Yu Cherkeseva, E.; Tsurak, L.A. Regional socio-ecological consequences of coal mines liquidation (Shakhty city, Rostov Oblast). *Min. Inf. Anal. Bull. (Sci. Eng. J.)* **2004**, *7*, 142–146.
20. Tarasenko, I.A.; Chepkaya, N.A.; Elistafenko, T.N.; Zinkov, A.V.; Katayeva, I.V.; Sadardinov, I.V. Ecological consequences of closing coal mines and measures to prevent their negative regional impact. *Bull. Far-Eastern Branch RAS* **2004**, *1*, 87–93.
21. Audry, S.; Blanc, G.; Schäfer, G. The impact of sulphide oxidation on dissolved metal (Cd, Zn, Cu, Cr, Co, Ni, U) inputs into the Lot-Garonne fluvial system (France). *Appl. Geochem.* **2005**, *20*, 919–931. [[CrossRef](#)]
22. Moncur, M.C.; Ptacek, C.J.; Blowers, D.W.; Jambor, J.L. Release, transport and attenuation of metals from an old tailing impoundment. *Appl. Geochem.* **2005**, *20*, 639–659. [[CrossRef](#)]
23. Smolyakov, B.S.; Ryzhikh, A.P.; Bortnikova, S.B.; Saeva, O.P.; Chernova, N.Y. Behavior of metals (Cu, Zn and Cd) in initial stage of water system contamination: Effect of pH and suspended particles. *Appl. Geochem.* **2010**, *25*, 1153–1161. [[CrossRef](#)]
24. Arefieva, O.; Nazarkina, A.V.; Gruschakova, N.V.; Skurikhina, J.E.; Kolycheva, V.B. Impact of mine waters on chemical composition of soil in the Partizansk Coal Basin, Russia. *Int. Soil Water Conserv. Res.* **2019**, *7*, 57–63. [[CrossRef](#)]
25. Blowes, D.W.; Ptacek, C.J.; Jambor, J.L.; Weisener, C.G. The geochemistry of acid mine drainage. *Treatise Geochem.* **2003**, *9*, 149–204.
26. Espana, J.S.; Pamo, E.L.; Santofimia, E.; Aduvire, O.; Reyes, J.; Baretino, D. Acid mine drainage in the Iberian Pyrite Belt (Odiel river watershed, Huelva, SW Spain): Geochemistry, mineralogy and environmental implications. *Appl. Geochem.* **2005**, *20*, 1320–1356. [[CrossRef](#)]
27. Akcil, A.; Koldas, S. Acid mine drainage (AMD): Causes, treatment and case studies. *J. Clean. Prod.* **2006**, *14*, 1139–1145. [[CrossRef](#)]
28. Favas, P.J.C.; Sarkar, S.K.; Rakshit, D.; Venkatachalam, P.; Prasad, M.N.V. Acid mine drainages from abandoned mines hydrochemistry, environmental impact, resource recovery, and prevention of pollution (Chapter 17). *Environ. Mater. Waste Resour. Recover. Pollut. Prev.* **2016**, *14*, 413–462.
29. Atrei, A.; Fiorani, M.; Bellingeri, A.; Protano, G.; Corsi, I. Remediation of acid mine drainage-affected stream waters by means of eco-friendly magnetic hydrogels crosslinked with functionalized magnetite nanoparticles. *Environ. Nanotechnol. Monit. Manag.* **2019**, *12*. [[CrossRef](#)]
30. Favas, P.J.C.; Martino, L.E.; Prasad, M.N.V. Chapter 1—Abandoned Mine Land Reclamation—Challenges and Opportunities (Holistic Approach). *Bio Geotechnol. Mine Site Rehabil.* **2018**, *2018*, 3–31. [[CrossRef](#)]
31. Zakon O Rudarstvu i Geološkim Istraživanjima (“Sl. Glasnik RS”, Br. 101/2015 I 95/2018—Dr. Zakon). Available online: <https://www.paragraf.rs/propisi/zakon-o-rudarstvu-i-geoloskim-istrazivanjima.html#> (accessed on 27 December 2019).
32. Mazáč, J. *Technické Kulturní Památky (Technical Cultural Monuments)*; VŠB—Technical University of Ostrava: Ostrava, Czech Republic, 2003.
33. Loures, L. Industrial heritage: The past in the future of the city. *WSEAS Trans. Environ. Dev.* **2008**, *4*, 687–696.

34. Jelen, J.; Kučera, Z. Dědictví (nejen) uranové těžby na Jáchymovsku. (Heritage (not only) of uranium mining in the Jáchymov region). *Geogr. Rozhl. (Geograph. Views)* **2017**, *26*, 28–30.
35. Hose, T.A. Geotourism and interpretation. In *Dowling; Geotourism*, R.K., Newsome, D., Eds.; Elsevier: Oxford, UK, 2005; pp. 221–241.
36. Hose, T.A. 3G's for Modern Geotourism. *Geoheritage J.* **2012**, *4*, 7–24. [[CrossRef](#)]
37. Gray, M. Geodiversity: Developing the paradigm. *Proc. Geol. Assoc.* **2008**, *119*, 287–298. [[CrossRef](#)]
38. Jenkins, J.M. Fossickers and rockhounds in Northern New South Wales. In *Special Interest Tourism*; Weiler, B., Hall, C.M., Eds.; Belhaven Press: London, UK, 1992; pp. 129–140.
39. Maini, J.S.; Carlisle, A. *Conservation in Canada: A Conspectus—Publication, 1974, No.1340*; Department of the Environment/Canadian Forestry Service: Ottawa, ON, Canada, 1974.
40. De Bastion, R. The private sector—Threat or opportunity? In *Geological and Landscape Conservation*; O'Halloran, D., Green, C., Harley, M., Stanley, M., Knill, J., Eds.; Geological Society: London, UK, 1994; pp. 391–395.
41. Martini, G. The protection of geological heritage and economic development: The saga of the Digne ammonite slab in Japan. In *Geological and Landscape Conservation*; O'Halloran, D., Green, C., Harley, M., Stanley, M., Knill, J., Eds.; Geological Society: London, UK, 1994; pp. 383–386.
42. Spiteri, A. Malta: A model for the conservation of limestone regions. In *Geological and Landscape Conservation*; O'Halloran, D., Green, C., Harley, M., Stanley, M., Knill, J., Eds.; Geological Society: London, UK, 1994; pp. 205–208.
43. Komoo, I. Conservation geology: A case for the ecotourism industry of Malaysia. In *Engineering Geology and the Environment*; Marinos, P.G., Koukis, G.C., Tsiambaos, G.C., Stournas, G.C., Eds.; Balkema: Rotterdam, The Netherlands, 1997; pp. 2969–2973.
44. Page, K.N. England's earth heritage resources: An asset for everyone. In *Coastal Defence and Earth Science Conservation*; Hooke, J., Ed.; Geological Society: London, UK, 1998; pp. 196–209.
45. Newsome, D.; Dowling, R.K. *Geotourism: The Tourism of Geology and Landscape*; Goodfellow Publishers: Oxford, UK, 2010.
46. Hose, T.A. Geotourism—Selling the earth to Europe. In *Engineering Geology and the Environment*; Marinos, P.G., Koukis, G.C., Tsiambaos, G.C., Stournaras, G.C., Eds.; A.A Balkema: Rotterdam, The Netherlands, 1997; pp. 2955–2960.
47. Hose, T.A. Geo-Tourism—Appreciating the deep side of landscapes. In *Niche Tourism; Contemporary Issues, Trends and Cases*; Novelli, M., Ed.; Elsevier Science: Oxford, UK, 2005; pp. 27–37.
48. Meini, M.; Di Felice, G.; Petrella, M. Geotourism perspectives for transhumance routes. Analysis, requalification and virtual tools for the geoconservation management of the drove roads in Southern Italy. *Geosciences* **2018**, *8*, 368. [[CrossRef](#)]
49. Antić, A.; Tomić, N.; Marković, S. Karst geoheritage and geotourism potential in the pek river lower basin (Eastern Serbia). *Geogr. Pannonica* **2019**, *23*, 32–46. [[CrossRef](#)]
50. Suzuki, D.A.; Takagi, H. Evaluation of geosite for sustainable planning and management in geotourism. *Geoheritage* **2018**, *10*, 123–135. [[CrossRef](#)]
51. Milivojević, M.; Martinović, M. Geothermal energy possibilities, exploration and future prospects in Serbia. In *Proceedings of the World Geothermal Congress 2005, Antalya, Turkey, 24–29 April 2005*.
52. Oudech, S.; Đokić, I. Geothermal energy use, country update for Serbia. In *Proceedings of the World Geothermal Congress 2015, Melbourne, Australia, 19–25 April 2015*.
53. Vasiljević, Đ.A.; Marković, S.B.; Hose, T.A.; Smalley, I.; O'Hara-Dhad, K.; Basarin, B.; Lukić, T.; Vujčić, M.D. Loess towards (geo) tourism—Proposed application on loess in Vojvodina region (north Serbia). *Acta Geogr. Slov.* **2011**, *51*–53, 391–406. [[CrossRef](#)]
54. Vujčić, M.D.; Vasiljević, Đ.A.; Marković, S.B.; Hose, T.A.; Lukić, T.; Hadžić, O.; Janičević, S. Preliminary geosite assessment model (GAM) and its application on Fruška Gora Mountain, potential geotourism destination of Serbia. *Acta Geogr. Slov.* **2011**, *51*, 361–377. [[CrossRef](#)]
55. Tomić, N. The potential of Lazar Canyon (Serbia) as a geotourism destination: Inventory and evaluation. *Geogr. Pannonica* **2011**, *15*, 103–112. [[CrossRef](#)]
56. Tomić, N.; Božić, S. A modified geosite assessment model (M-GAM) and its application on the Lazar Canyon area (Serbia). *Int. J. Environ. Res.* **2016**, *10*, 601–612.

57. Antić, A.; Tomić, N. Assessing the speleotourism potential together with archaeological and palaeontological heritage in Risovača cave (central Serbia). *Acta Geoturistica* **2019**, *10*, 1–11.
58. Tomić, N.; Antić, A.; Marković, S.B.; Dorđević, T.; Zorn, M.; Valjavec, M.B. Exploring the Potential for Speleotourism Development in Eastern Serbia. *Geoheritage* **2019**, *11*, 359–369. [[CrossRef](#)]
59. Vuković, S.; Antić, A. Speleological approach for geotourism development in Zlatibor county (West Serbia). *Turizam* **2019**, *23*, 56–68. [[CrossRef](#)]
60. Vukočić, D.; Milosavljević, S.; Valjarević, A.; Nikolić, M.; Srećković-Batočanin, D. The evaluation of geosites in the territory of National park „Kopaonik“ (Serbia). *Open Geosci.* **2018**, *10*, 618–633. [[CrossRef](#)]
61. Leksikon nacionalnih parkova Srbije “Kopaonik”. JP Službeni glasnik, JP Nacionalni park Kopaonik. *Geogr. Inst. Jovan Cvijić SANU* **2015**, 1–348.
62. Nešić, D.; Milinčić, M.; Lukić, B. Relict cryoplanation terraces of central Kopaonik (Serbia). *Carpathian J. Earth Environ. Sci.* **2017**, *12*, 61–68.
63. Ristić, D.; Vukočić, D.; Nikolić, M.; Milinčić, M.; Kićović, D. Capacities and energy potential of thermal-mineral springs in the area of the Kopaonik tourist region (Serbia). *Renew. Sustain. Energy Rev.* **2019**, *102*, 129–138. [[CrossRef](#)]
64. Ristić, D.; Vukočić, D.; Milinčić, M. Tourism and sustainable development of rural settlements in protected areas—Example NP Kopaonik (Serbia). *Land Use Policy* **2019**, *89*, 104231. [[CrossRef](#)]
65. Jotić, R.; Vukočić, M. *Svedok Vekova*; Rodoljub Jotić and Miladin Vukočić: Blaževo, Srbija, 2004; pp. 1–291.
66. Dimitrijević, M.; Karamata, S.; Sikošek, B.; Veselinović, D. *Osnovna geološka karta 1:100,000*; Savezni Geološki Zavod: Beograd, Serbia, 1973.
67. Hose, T.A.; Marković, S.B.; Komac, B.; Zorn, M. Geotourism—A short introduction. *Acta Geogr. Slov.* **2011**, *51*, 2. [[CrossRef](#)]
68. Bruschi, V.M.; Cendrero, A. Geosite evaluation. Can we measure intangible values? *Il Quat.* **2005**, *18*, 293–306.
69. Coratza, P.; Giusti, C. Methodological proposal for the assessment of the scientific quality of geomorphosites. *Il Quat.* **2005**, *18*, 307–313.
70. Pralong, J.P. A method for assessing the tourist potential and use of geomorphological sites. *Géomorphologie. Relief Process. Environ.* **2005**, *3*, 189–196. [[CrossRef](#)]
71. Pereira, P.; Pereira, D.; Caetano Alves, M.I. Geomorphosite assessment in Montesinho Natural Park (Portugal). *Geogr. Helv.* **2007**, *62*, 159–168. [[CrossRef](#)]
72. Serrano, E.; González-Trueba, J.J. Assessment of geomorphosites in natural protected areas: The Picos de Europa National Park (Spain). *Géomorphologie. Formes Process. Environ.* **2005**, *3*, 197–208. [[CrossRef](#)]
73. Zouros, N.C. Geomorphosite assessment and management in protected areas of Greece. *The case of the Lesbos island coastal geomorphosites*, *Geogr. Helv.* **2007**, *62*, 169–180.
74. Reynard, E.; Fontana, G.; Kozlik, L.; Scapozza, C. A method for assessing “scientific” and “additional values” of geomorphosites. *Geogr. Helv.* **2007**, *62*, 148–158. [[CrossRef](#)]
75. Reynard, E. Scientific research and tourist promotion of geomorphological heritage. *Geogr. Fis. Din. Quat.* **2008**, *31*, 225–230.
76. Hrnjak, I.; Vasiljević, Đ.; Marković, S.B.; Vujičić, M.Đ.; Lukić, T.; Gavrilov, M.B.; Basarin, B.; Kotrla, S. Primena preliminarnog modela valorizacije geolokaliteta (GAM) na Deliblatsku peščaru. Zbornik Radova, 2. Stručno naučni skup. *Zaštita Prir. Južnog Banat.* **2013**, *2*, 59–65. [[CrossRef](#)]
77. Marescotti, P.; Brancucci, G.; Sasso, G.; Solimano, M.; Marin, V.; Muzio, C.; Salmona, P. Geoheritage values and environmental issues of derelict mines: Examples from the sulfide mines of gromolo and petronio valleys. Eastern Liguria, Italy. *Minerals* **2018**, *8*, 229. [[CrossRef](#)]
78. AMIRA. *International. ARD Test Handbook: Prediction & Kinetic Control of Acid Mine Drainage, AMIRA P387A*; Ian Wark Research Institute and Environmental Geochemistry International Ltd.: Melbourne, Australia, 2002; p. 42.
79. Protano, G.; Nannoni, F. Influence of ore processing activity on Hg, As and Sb contamination and fractionation in soils in a former mining site of Monte Amiata ore district (Italy). *Chemosphere* **2018**, *199*, 320–330. [[CrossRef](#)] [[PubMed](#)]

