

Figure S2: Downhole profiles from LA-ICP-MS analysis demonstrating variation in U and Th and other elements in bastnäsite. Figures A and B show counts-per-second (CPS) vs. time (seconds). Arrows to highlight signals caused by inclusions.

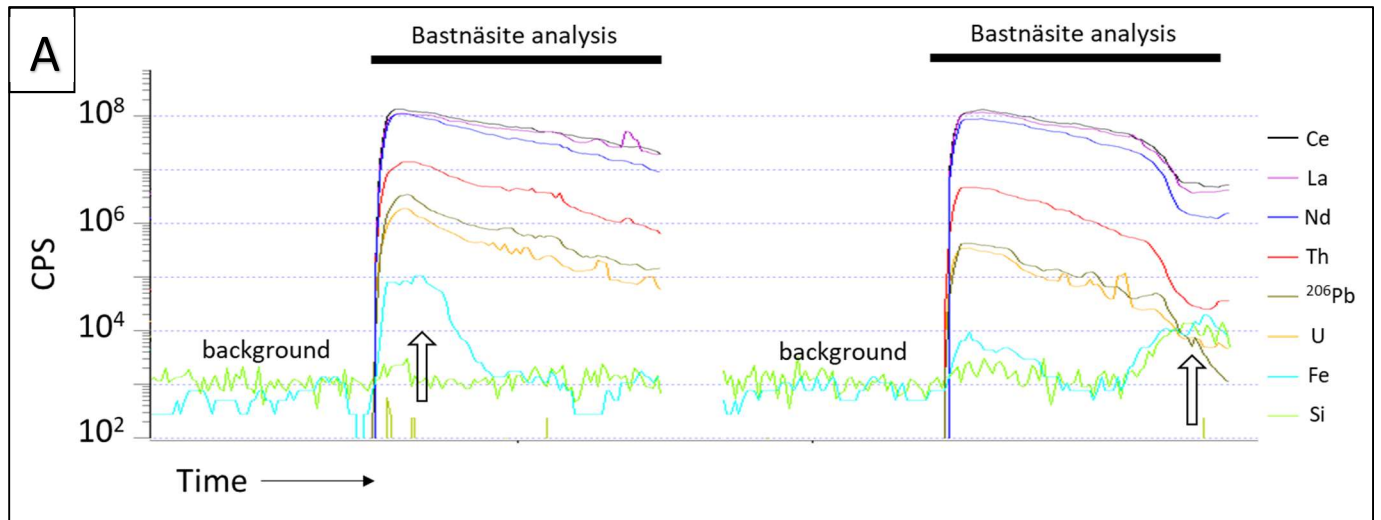


Figure A: Bastnäsite analysis with elevated Th, U, and ^{206}Pb with REE in bastnäsite, and with Fe and Si contained within inclusions. RX6726.

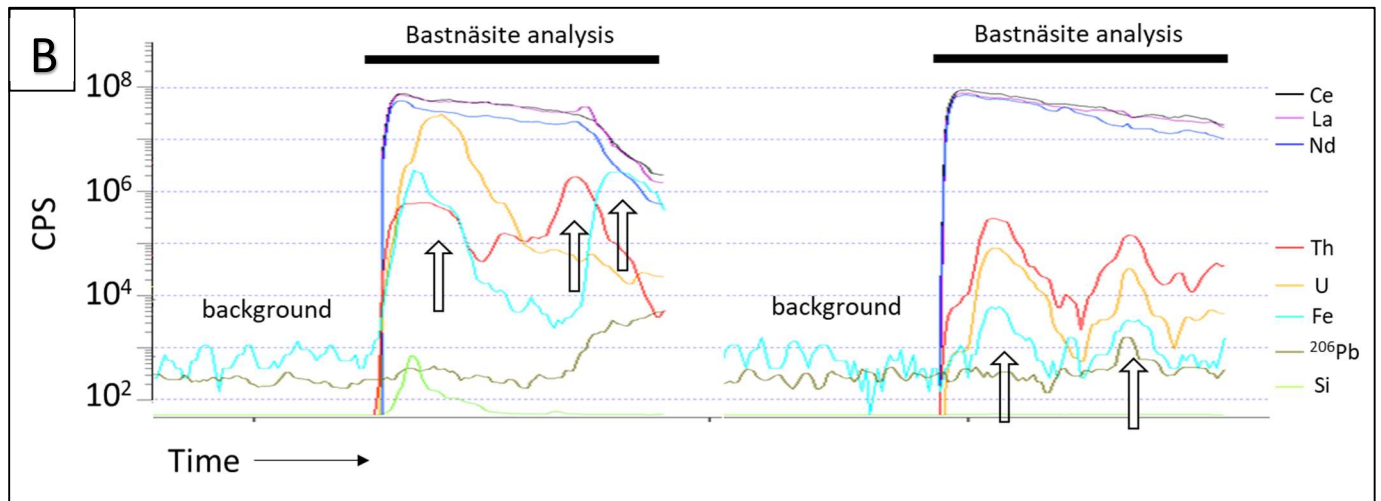


Figure B: Bastnasite analysis with inclusions containing U, Th, and Fe. RX6709.