

Article

LC-MS/MS-based Serum Protein Profiling for Identification of Candidate Biomarkers in Pakistani Rheumatoid Arthritis patients

Sidrah Jahangir ¹, Peter John ^{1,*}, Attya Bhatti ¹, Muhammad Muaaz Aslam ², Javaid Mehmood Malik ³, James R Anderson ⁴ and Mandy J Peffers ⁴

Supplementary Materials:

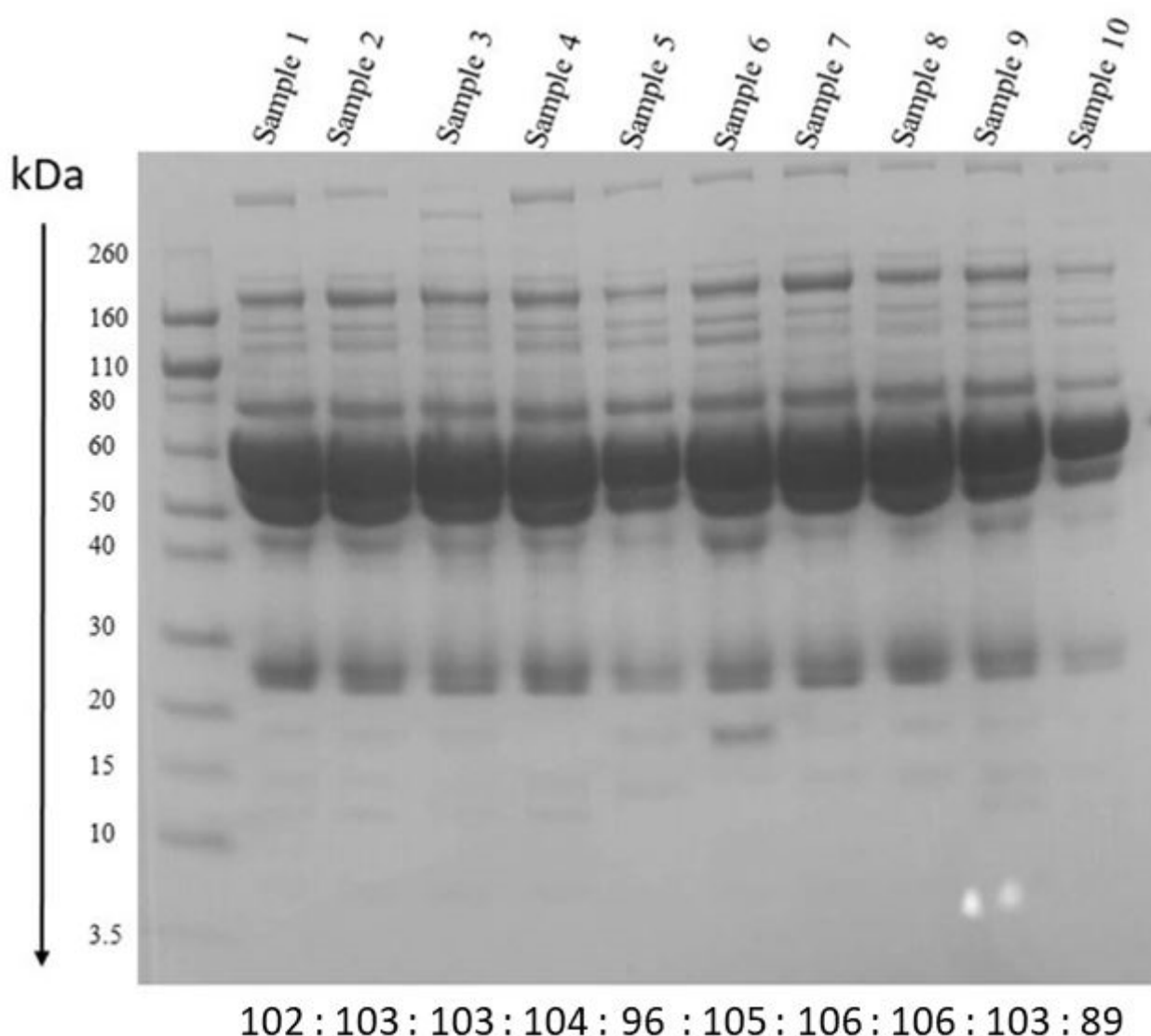


Figure S1. Serum samples from study subjects loaded on SDS-PAGE Gel to check the presence of proteins and get a rough idea of protein integrity: Lane 1: Ladder, Lane 2-6: Double positive RA patients for RF factor and anti-CCP, Lane 7-11: Single positive RA patients for RF factor. The integrated density ratio is shown at the bottom for each band. Integrated density ratio is calculated using ImageJ.

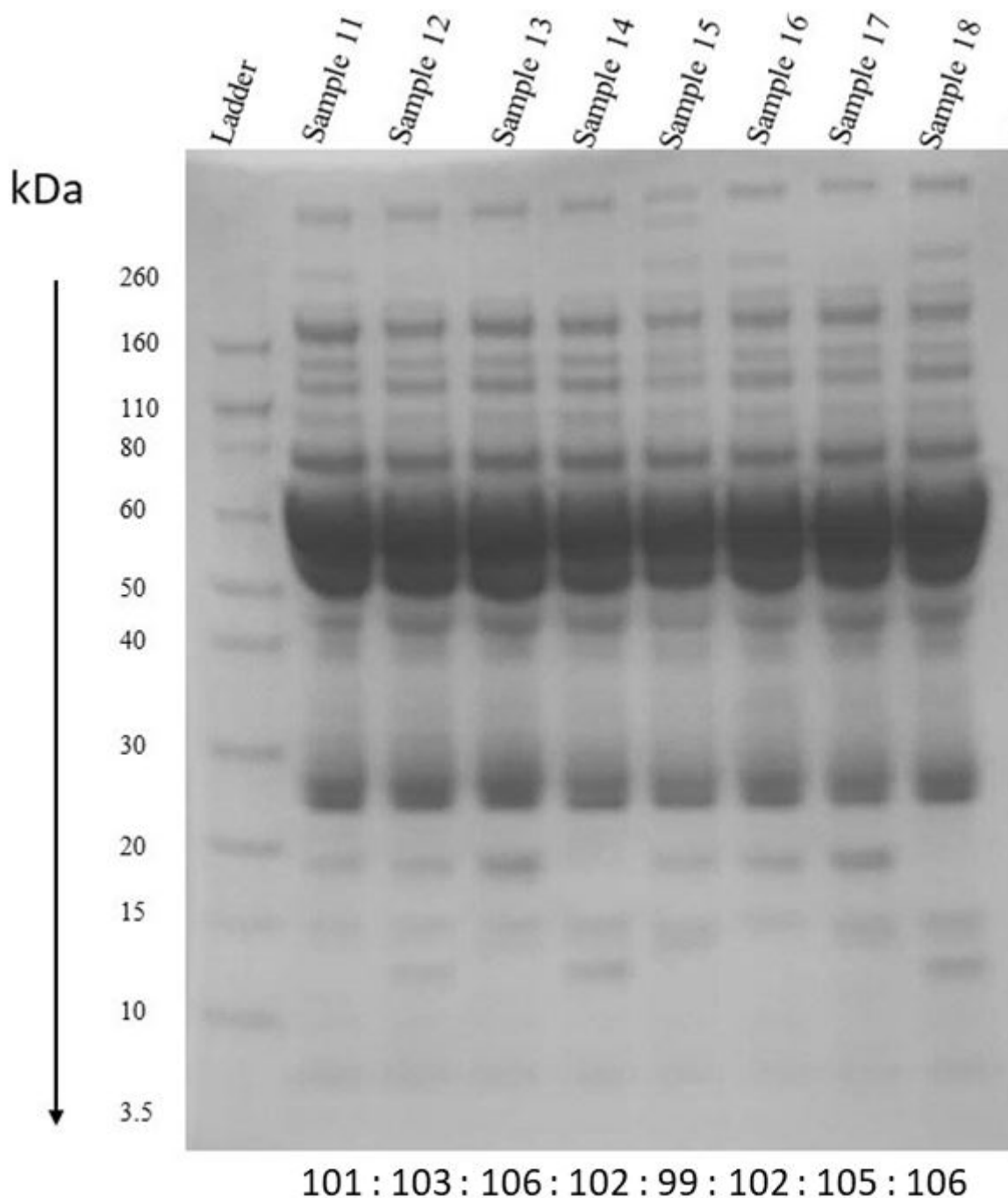


Figure S2. Serum samples from study subjects loaded on SDS-PAGE Gel to check the presence of proteins and get a rough idea of protein integrity: Lane 1: Ladder, Lane 2-6: Single positive RA patients for anti-CCP, Lane 7-9: Double negative RA patients for RF factor and anti-CCP. The integrated density ratio is shown at the bottom for each band. Integrated density ratio is calculated using ImageJ.

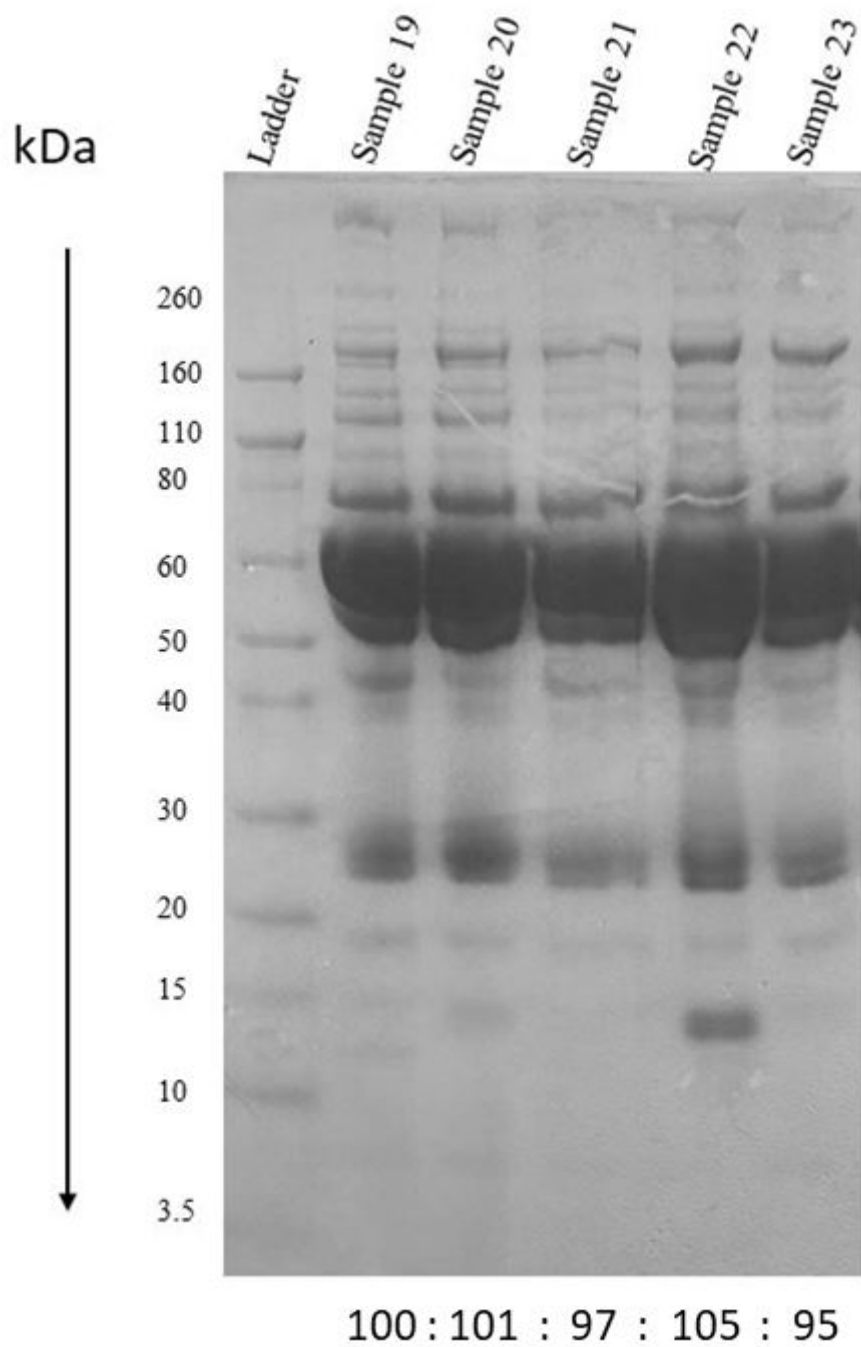


Figure S3. Serum samples from study subjects loaded on SDS-PAGE Gel to check the presence of proteins and get a rough idea of protein integrity: Lane 1: Ladder, Lane 2-8: Healthy control samples. The integrated density ratio is shown at the bottom for each band. Integrated density ratio is calculated using ImageJ.