

Article

Influence of Cell Type in In Vitro Induced Reprogramming in Cattle

Kaiana Recchia ^{1,*}, Laís Vicari de Figueiredo Pessôa ², Naira Caroline Godoy Pieri ²,
Pedro Ratto Lisboa Pires ² and Fabiana Fernandes Bressan ^{1,2,*}

¹ Department of Surgery, Faculty of Veterinary Medicine and Animal Science, University of São Paulo, Av. Prof. Dr. Orlando Marques de Paiva, 87, São Paulo 05508-270, SP, Brazil

² Department of Veterinary Medicine, Faculty of Animal Science and Food Engineering, University of São Paulo, Av. Duque de Caxias Norte, 225, Pirassununga 13635-900, SP, Brazil; laisvpeessoa@usp.br (L.V.d.F.P.); nairagodoy@usp.br (N.C.G.P.); pedroratto@usp.br (P.R.L.P.)

* Correspondence: kaiana.recchia@usp.br (K.R.); fabianabressan@usp.br (F.F.B.); Tel.: +55-11-941952812 (K.R.)

Abstract: Induced pluripotent stem cells (iPSCs) have been considered an essential tool in stem cell research due to their potential to develop new therapies and technologies and answer essential questions about mammalian early development. An important step in generating iPSCs is selecting their precursor cell type, influencing the reprogramming efficiency and maintenance in culture. In this study, we aim to characterize bovine mesenchymal cells from adipose tissue (bAdMSCs) and fetal fibroblasts (bFFs) and to compare the reprogramming efficiency of these cells when induced to pluripotency. The cells were characterized by immunostaining (CD90, SSEA1, SSEA3, and SSEA4), induced differentiation in vitro, proliferation rates, and were subjected to cell reprogramming using the murine OSKM transcription factors. The bFFs presented morphological changes resembling pluripotent cells after reprogramming and culture with different supplementation, and putative iPSCs were characterized by immunostaining (OCT4, SOX2, NANOG, and AP). In the present study, we demonstrated that cell line origin and cellular proliferation rate are determining factors for reprogramming cells into pluripotency. The generation of biPSCs is a valuable tool to improve both translational medicine and animal production and to study the different supplements required to maintain the pluripotency of bovine cells in vitro.

Keywords: bovine; cellular reprogramming; multipotent; pluripotent; iPSCs



Citation: Recchia, K.; Pessôa, L.V.d.F.; Pieri, N.C.G.; Pires, P.R.L.; Bressan, F.F. Influence of Cell Type in In Vitro Induced Reprogramming in Cattle. *Life* **2022**, *12*, 1139. <https://doi.org/10.3390/life12081139>

Academic Editor: Antonella Angiolillo

Received: 9 June 2022
Accepted: 24 July 2022
Published: 28 July 2022

Publisher's Note: MDPI stays neutral with regard to jurisdictional claims in published maps and institutional affiliations.



Copyright: © 2022 by the authors. Licensee MDPI, Basel, Switzerland. This article is an open access article distributed under the terms and conditions of the Creative Commons Attribution (CC BY) license (<https://creativecommons.org/licenses/by/4.0/>).

1. Introduction

Stem cells have two main characteristics, the capacity for self-renewal and the potential to differentiate into other cell types, and are widely studied for their use in veterinary and human regenerative medicine [1,2]. The potential for cell differentiation varies according to the classification of the stem cells, where the totipotent cell (zygote) can be differentiated into embryonic germ layers and extra-embryonic tissues [3], and the pluripotent cells can differentiate into tissues derived from the three germinative layer origins (endoderm, mesoderm, and ectoderm) and in progenitor germ cells (PGCs) [4,5], whereas multipotent cells present limited plasticity and usually can only be differentiated in cells derived from the same germinative layer tissue; for example, mesenchymal cells derived from the mesoderm are capable of differentiating into osteocytes, adipocytes, or chondrocytes [6,7]. The self-renewal and multipotent characteristics could facilitate the reprogramming process once those cells have a few endogenous pluripotency-inducing factors in abundance [8].

Induced pluripotent stem cells (iPSCs) were first reported from murine, followed by human fibroblasts, transduced with a retroviral vector containing the transcription factors OCT4, SOX2, KLF4, and c-MYC (OSKM) [9,10]. The reprogramming of somatic cells has become a valuable source of pluripotent cells and has been established for several species of

domestic and wild animals, including large animals such as swine [11–14], equine [15,16], buffalo [17], and bovine [4,18–20].

The generation of iPSCs in the bovine model (biPSCs) can greatly benefit veterinary and human regenerative medicine studies, serving as a biomedical model or bioreactors [2,21]. It can also be applied to elucidate further the mechanisms involved in embryonic development [18] and reproductive technologies [2,22–24], aiming at the acquisition of genetically superior animals [5]. The biPSCs already reported were generated from the adult, fetal, or embryonic fibroblasts [25–27], amniotic cells [20], mammary cells [28], and Sertoli cells [19]. The biPSCs were generated through viral vectors [18,19,25,26,28], PiggyBac transposon [20,27], and electroporation [29] using OSKM from murine [18,28], human [19], or bovine transcription factors [27], and occasionally with the addition of NANOG and LIN28 [26,30].

To characterize the biPSCs, the detection of usual pluripotent markers, including mainly OCT4, SOX2, and NANOG, and differentiation into embryoid bodies or teratoma assays are usually performed, and the standard gold test is the chimera production [20,31]. The biPSCs previously reported were generated in a divergent condition of culture *in vitro*, as reported for the supplementation with LIF (leukemia inhibitory factor) and BMP4 (bone morphogenetic protein 4) [25,29], or LIF and/or bFGF (basic fibroblast growth factor) [32]. Moreover, the precursor cells of iPSCs may influence the reprogramming methodology and the supplementation to be used; in humans, the comparison of different cell types shows that some, such as urine-derived cells (UDCs), can be more easily reprogrammed into pluripotent cells [32]. In humans, both the integration-free and integration-based reprogramming of keratinocytes, peripheral blood mononuclear cells, or UDCs has been reported due to their facilitated collection [33]; however, the most commonly used cells for pluripotency reprogramming in different animal species are still the mesenchymal stem cells, in addition to adult or fetal fibroblasts [34], which are traditional components of most cell biobanks. Thus, the selection of precursor cells is the first and crucial step for the acquisition of iPSCs aiming at efficient reprogramming.

Herein, two cell types, bovine fetal fibroblasts (bFF) and bovine adipose tissue mesenchymal stem cells (bAdMSC), were characterized and then reprogrammed using OSKM. The efficiency of reprogramming in different culture conditions (LIF or bFGF) was morphologically analyzed. Albeit further molecular analysis and an increased number of animals studied are needed to better support our findings, the results presented herein may contribute to the selection of cell origin, the establishment of a reprogramming protocol, and adequate culture conditions for biPSC generation and maintenance. The generated cells can be further used for the *in vivo* and *in vitro* study of diseases and genetic improvement, for example, for the *in vitro* generation of gametes and embryos.

2. Materials and Methods

All procedures were approved by the Ethics Committee on the Use of Animals of FZEA/USP (n° 3526250717). Unless otherwise stated, cells were cultured at 38.5 °C, 5% CO₂, and maximal humidity (from here on, standard culture conditions), analyses were performed in biological triplicates, and photo-documentation was performed with a Nikon Eclipse TS100 microscope equipped with a Nikon DS-R1 camera and the NIS-Elements F (v 2.1) software.

2.1. Cell Culture

Briefly, bovine fetal fibroblasts (bFF) were isolated from a 50-day gestation fetus [18], and adipose tissue-derived mesenchymal cells (bAdMSC) were derived from 2 cm³ of adipose tissue [6] from an adult animal. The cells were maintained in T75 cm flasks using Iscove's Modified Dulbecco's Medium (IMDM, Life Technologies, Frederick, MD, USA) supplemented with 10% fetal bovine serum (FBS, Life Technologies) and 1% of penicillin and streptomycin (Life Technologies) at standard culture conditions. Cells were dissociated

(TrypLE Express, Life Technologies) before reaching 80–90% confluency and cryopreserved at each passage.

2.2. Mesodermal In Vitro Differentiation

bFFs and AdMSCs were submitted to induced differentiation using the StemPro commercial kit (Cat#A10071-01, Life Technologies), as previously described [15] and according to the manufacturer's instructions. For the chondrogenic cell differentiation, cells were plated in 5 μ L IMDM droplets at a concentration of 1.6×10^7 cells/mL and cultured under standard conditions for 2 h, when the differentiation medium was added and prepared according to the manufacturer's instructions and refreshed every four days for two weeks. After the differentiation process, cells were fixed and stained using Alcian blue dye (Sigma-Aldrich, Taufkirchen, Germany) for chondrogenesis differentiation detection and were photo-documented.

2.3. Doubling Time Analysis

As previously described [14], for doubling time analysis, bFFs and AdMSCs were plated in 6-well plates at the initial density of 3×10^4 cells/well and incubated for two days. Every 48 h, the cells were dissociated, counted using a Neubauer chamber, and reseeded at the initial density (3×10^4 cells/well) [15]. This process was repeated nine times. The mean of cell doubling time (*DT*) was calculated in hours using the equation [35]:

$$DT = \frac{(T - T_0) \cdot \log 2}{(\log N - \log N_0)}$$

(*T* – *T*₀): number of hours cells were cultured between passages,

*N*₀: initial cell density,

N: number of cells harvested at each passage.

2.4. Immunocytochemistry for CD90, SSEA1, 3 and 4

bFFs and AdMSCs (8×10^3 cells/well previously plated in 24-well plates and cultured until 70% confluency) were fixed with 4% paraformaldehyde. The cells were analyzed for typical mesenchymal marker CD90 (SC6071, Santa Cruz, CA, USA—1:200, secondary antibody A11078, Abcam, Cambridge, MA, USA—1:500), and for pluripotency markers: SSEA1 (MAB4301, Abcam—1:100), SSEA3 (FCMAB141A4, conjugated Abcam—1:50), and SSEA4 (MO813-70FCMAB116, conjugated Abcam—1:50). Briefly, the cells were washed with buffer (0.1% Tween + 1% Bovine Serum Albumin (BSA)). Subsequently, blocking with 10% BSA was performed, the cells were washed with buffer, and each well of the plate was incubated overnight with the specific primary antibody. After the incubation period, the cells were washed with phosphate buffer saline (PBS), incubated for 1 h with a secondary antibody (A11078, Abcam—1:500), washed with buffer, and incubated for 5 min with Hoechst (33342, Sigma-Aldrich, 1:100). Subsequently, washing with PBS was performed, and the cells were photo-documented as previously described.

2.5. Lentiviral Production and Cellular Reprogramming

The pluripotency induction of bFFs and AdMSCs was performed as previously reported [15,18]. The polycistronic lentiviral vector containing the murine reprogramming factors OCT4, SOX2, KLF4, and c-MYC was used (mOSKM-STEMCCA, Millipore, Burlington, MA, USA). To produce lentiviral particles, the lipofection protocol (Lipofectamine 3000, Life Technologies) was performed using auxiliary vectors TAT, REV, hgpm2, VSVG, and mOSKM in 293FT cells (Life Technologies). The bFFs and bAdMSCs were transduced overnight using polybrene 8 μ g/mL (hexadimethrine bromide, Sigma-Aldrich) in 35 mm diameter dishes.

After six days, the cells were harvested using TrypLE Express (Life Technologies) and 2×10^4 cells/well were plated onto feeder layers of mitomycin C-treated mouse embryonic fibroblasts (MEFs) in iPSCs media composed of KnockOut Dulbecco's modified

Eagle's medium (DMEM/F-12, Life Technologies), supplemented with 20% KnockOut Serum Replacement (KSR, Life Technologies), 1% L-glutamine (Life Technologies), 1% nonessential amino acids (Life Technologies), 1% antibiotics (pen/strep, Life Technologies), and 3.85 μ M β -mercaptoethanol (Life Technologies). Media culture was supplemented with 10 μ g/mL human bFGF (PeproTech, East Windsor, NJ, USA) or 1000 U/mL LIF (Merck, Temecula, CA, USA).

Cells were kept in iPSCs media for approximately 20 days or until colonies were formed, and the media was refreshed every two days. The efficiency of iPSC colony generation was measured by counting the number of colonies formed in relation to the number of cells initially plated to the transduction. After a first manual splitting of iPSC colonies, clonal lineages were enzymatically dissociated, replated, and cryopreserved. Reprogrammed cells were kept in culture for at least 21 passages at 38.5 °C and 5% CO₂.

2.6. Characterization of biPSCs-Immunophenotyping

For alkaline phosphatase (AP) detection, the commercial Alkaline Phosphatase Detection Kit (86R-1KT, Sigma-Aldrich) was used. Briefly, colonies were fixed and analyzed according to the manufacturer's instructions. Colonies stained in pink were considered positive. AP positive clonal lineages were further analyzed for the detection of NANOG, OCT4, and SOX2.

biPSCs colonies were washed with PBS, permeabilized with 0.1% Triton X for 20 min, washed with PBS, and blocked with 1% BSA/0.05% Tween for 1 h and labeled for 1 h with primary antibodies: NANOG (Ab21624, Abcam—1:100 dilution), OCT4 (Sc8628, Santa Cruz—1:100 dilution), and SOX2 (Ab97954, Abcam—1:250). Cells were then washed with 0.05% Tween, incubated for 1 h with a secondary antibody (anti-rabbit Alexa Fluor 488-1:500 dilution), washed as described above, and labeled with Hoechst 33342 (Sigma-Aldrich—1:1000 dilution) for 5 min. After a final wash with PBS, the cells were photo-documented.

3. Results

3.1. bFFs and bAdMSCs Analysis

To evaluate the plasticity of bFFs and bAdMSCs, the cells were induced to chondrogenic lineage. The analysis of cell differentiation was performed based on the morphological comparison between the supplemented cells and the control cells (Figure 1). The cells submitted to chondrogenesis formed a cell mass stained by Alcian Blue, diverging from the control cells, which maintained their typical spindle-shaped morphology.

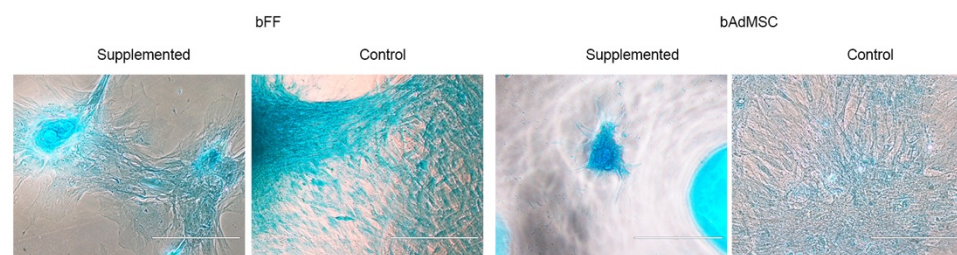


Figure 1. bFFs and bAdMSCs induced by chondrogenesis differentiation and control cells (Scale bar: 200 μ m).

Immunocytochemistry was performed to detect pluripotent and multipotent markers in the bFFs and bAdMSCs. The CD90 marker (mesenchymal marker) was detected in both, but not the SSEA-1, SSEA-3, and SSEA-4 (putative markers of pluripotency; Figure 2).

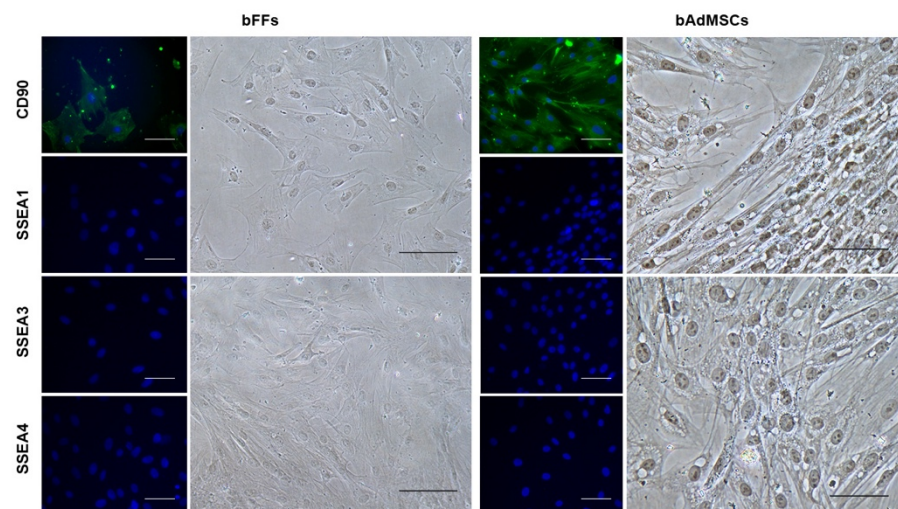


Figure 2. Positive detection of the CD90 marker and negative for SSEA-1, SSEA-3, and SSEA-4 in bFFs and bAdMSCs. Nuclei labeled with Hoechst. Scale bar 200 μ m.

3.2. Doubling Time Analysis

bFFs presented a shorter doubling time (Figure 3), approximately 22 h, compared to adipose tissue cells, which presented a doubling time of approximately 29 h ($p = 0.0096$).

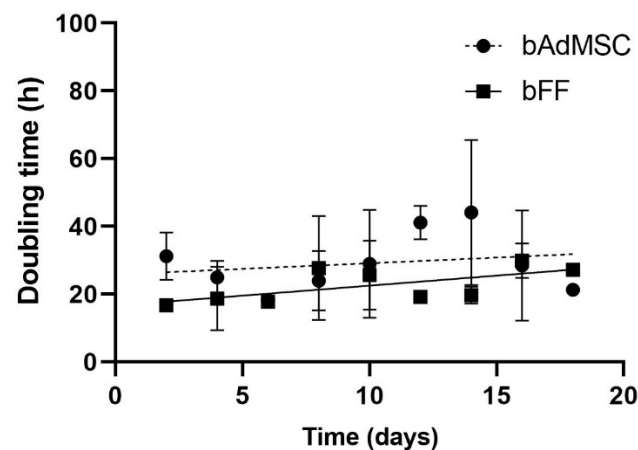


Figure 3. Bovine mesenchymal adipose tissue cells and fetal fibroblasts doubling time analysis using cellular count at every 48 h of culture. bFF cells showed shorter cell doubling compared to bAdMSCs ($p = 0.0096$).

3.3. Reprogramming Efficiency and Morphological Analysis of iPSCs

After pluripotency induction, only bFF cells showed morphological signs of reprogramming 10 days after transduction. The reprogrammed cells were cultured in different supplements, bFGF or LIF, and were analyzed regarding their morphology (Figure 4). The reprogramming process supplemented with bFGF showed 24 colonies (22 AP positive), and those supplemented with LIF presented 23 colonies (21 AP positive, Table 1). In both conditions of supplementation, the cells presented a round shape and the formation of colonies with defined borders.

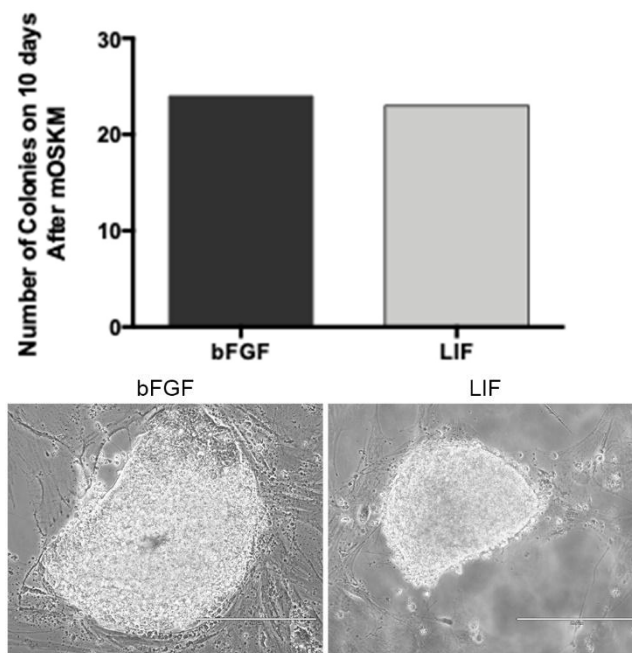


Figure 4. biPSC colonies in different supplementations: bFGF or LIF. The colonies showed a rounded shape and the formation of colonies with delimited borders (Scale bar: 400 μ m and 200 μ m, respectively).

Table 1. Number of colonies (total and AP positive) observed 10 days after the transduction protocol.

	Total Colonies	AP Positive Colonies	AP Positive/Total %
bFGF	24	22	91.66%
LIF	23	21	91.30%

Colonies supplemented with LIF showed compacted colonies with well-defined borders and, based on their morphology, were selected for further characterization, such as the detection of alkaline phosphatase (AP) and markers related to the pluripotency: NANOG, OCT4, and SOX2 (Figure 5).

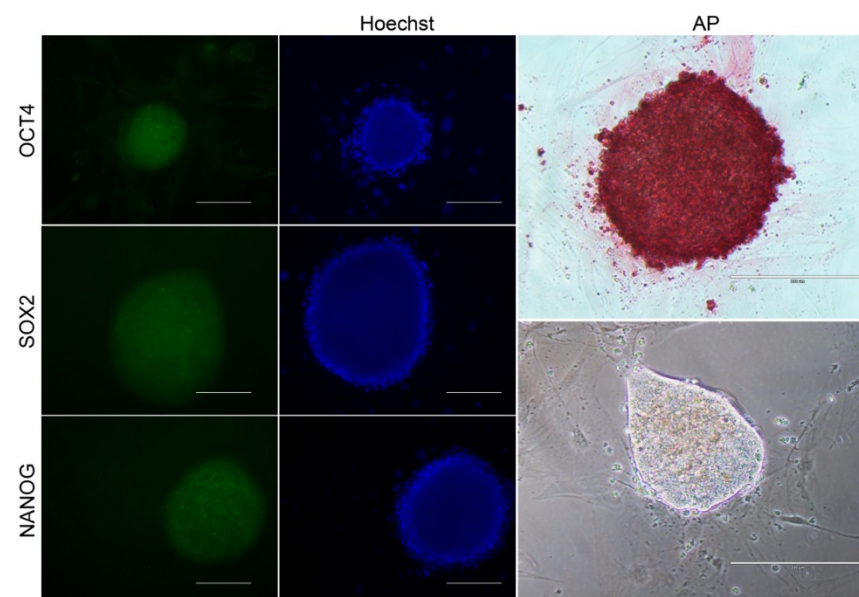


Figure 5. Immunocytochemistry for AP, OCT4, SOX2, and NANOG in biPSCs supplemented with LIF (Scale bar 200 μ m).

4. Discussion

Bovine iPSCs have already been reported in several divergent studies regarding reprogramming methods and culture conditions, and the majority were derived from fetal or embryonic bovine fibroblasts [18,36]. In the present study, we characterized fetal bovine fibroblasts and mesenchymal cells derived from adipose tissue and reprogrammed these cells for the generation of biPSCs.

The bFFs and bAdMSCs were positive for CD90, which is typical of mesenchymal stem cells [37], and the cells were negative for pluripotency surface markers (SSEA-1, SSEA-3, and SSEA-4). As seen in previous work on adipose tissue cells and fibroblasts of different animal species, cells can differentiate into mesodermal lineages [15]. Similar to these results, the bFFs and bAdMSCs were able to differentiate into chondrocytes.

Faster cell proliferation rates are among the main characteristics of stem cells [38]. In this study, bFFs presented a shorter doubling time, which means a higher proliferation rate, showing that these cells need approximately 22 h to double their population. In comparison, the bAdMSCs needed approximately 29 h. Since the cells were kept at the same passage, such difference may be associated with the origin of the cell or even the donor's age, as seen in other species [15,18,39,40], and might affect the reprogramming efficiency of the cell lines analyzed [41].

Interestingly, after inducing the bFFs and bAdMSCs into pluripotency, only biPSCs derived from bFF cells were generated. Thus, besides the reprogramming process being multifactorial dependent, to our knowledge, there are no reports of iPSCs derived from bAdMSCs. Ruiz et al. [41] reported that the higher proliferation rate of the origin cell is a necessary event required for the acquisition and maintenance of pluripotency in the human model, similar to our results.

After pluripotency induction, the bFF cells showed clear signs of cell reprogramming, such as dome-shaped and compact colonies with well-defined borders, similar to those previously reported by Bessi and collaborators [42] with bFGF or bFGF + LIF + 2i supplementation. In addition, we detected the pluripotency markers OCT4, SOX2, NANOG, and alkaline phosphatase, and further analyses are still desirable to confirm the true pluripotent status of these cells.

To maintain the pluripotency of biPSCs during the *in vitro* culture, supplementation is necessary. LIF is responsible for inhibiting differentiation and stimulating self-renewal [43], while bFGF regulates self-renewal and differentiation [44]. Several authors have already reported the dependence of bFGF + LIF for the maintenance of biPSCs *in vitro* [20,28,30]; however, other reports have reported the culture of biPSCs bFGF + LIF + 2i (MEKi: PD0325901 and GSK3i: CHIR99021) [42] or only bFGF [18,26]. The biPSCs generated in this study were maintained for at least 21 passages in culture supplemented with bFGF or LIF. In addition, no morphological differences during the reprogramming process were observed between the different medium supplementations in this study. Whereas the exact mechanisms behind the different media requirements necessary to maintain the pluripotency of iPSCs generated from different cell lines have not yet been elucidated in large animal models, we have experienced similar outcomes in previous studies of other species [12,15,18].

Our study demonstrated that the efficiency in generating biPSCs cells might be influenced by the origin of the somatic cells and possibly the donor age. The biPSCs generated from bFF cells were characterized based on their morphology and immunophenotype. These bovine reprogrammed cells can be used in translational studies to improve animal reproduction and for veterinary or human regenerative medicine.

In summary, our results showed that the bFFs and bAdMSCs have the potential to differentiate into chondrocytes after the *in vitro* induction, were CD90 positive, and the bFFs presented a shorter doubling time. The bAdMSCs, however, showed a higher doubling time rate and no signs of reprogramming. In our conditions, the bFFs seem more promising for *in vitro* cellular reprogramming, as they presented expected morphological changes such as the formation of well-defined colonies, and the putative iPSCs generated were positive for alkaline phosphatase and markers related to pluripotency (OCT4, SOX2,

and NANOG). Nonetheless, additional morphological analysis including more animals, and molecular analyses of the data presented here, could further characterize the state of the pluripotency of generated cells and complement the results gathered here. Finally, we conclude that multiple aspects, such as the cell tissue source, the age of the animal, and the proliferation rates can influence the generation of iPSCs. Moreover, our results can contribute to the development of pluripotent cells in large animal models.

Author Contributions: K.R. and F.F.B. conceptualized experiments and wrote the manuscript. K.R., L.V.d.F.P. and N.C.G.P. collected and processed samples. K.R., L.V.d.F.P., N.C.G.P., P.R.L.P. and F.F.B. collected and interpreted data. All authors have read and agreed to the published version of the manuscript.

Funding: This work was supported by the Sao Paulo Research Foundation (FAPESP)—Brazil (financial support grants #2015/26818-5, #2013/08135-2, #2019/02811-2), the Coordination of Superior Level Staff Improvement (CAPES 23038.006964/2014-43), and the National Council for Scientific and Technological Development (CNPq 433133/2018-0).

Institutional Review Board Statement: The study procedures were approved by the Ethics Committee on Animal Experimentation of the Faculty of Animal Science and Food Engineering, University of São Paulo (n° 3526250717).

Informed Consent Statement: Not applicable.

Data Availability Statement: Not applicable.

Acknowledgments: The authors would like to acknowledge Carlos Eduardo Ambrosio and Rafael Vilar Sampaio for scientific discussion, as well as the Laboratory of Molecular Morphophysiology and Development (LMMD/FZEA) and the University of São Paulo (USP).

Conflicts of Interest: The authors declare that there is no conflict of interest.

References

1. Telfer, E.E.; Anderson, R.A. The Existence and Potential of Germline Stem Cells in the Adult Mammalian Ovary. *Climacteric* **2019**, *22*, 22–26. [[CrossRef](#)]
2. Pieri, N.C.G.; de Souza, A.F.; Botigelli, R.C.; Machado, L.S.; Ambrosio, C.E.; dos Santos Martins, D.; de Andrade, A.F.C.; Meirelles, F.V.; Hyttel, P.; Bressan, F.F. Stem Cells on Regenerative and Reproductive Science in Domestic Animals. *Vet. Res. Commun.* **2019**, *43*, 7–16. [[CrossRef](#)] [[PubMed](#)]
3. De Paepe, C.; Krivega, M.; Cauffman, G.; Geens, M.; Van de Velde, H. Totipotency and Lineage Segregation in the Human Embryo. *Mol. Hum. Reprod.* **2014**, *20*, 599–618. [[CrossRef](#)]
4. Cao, H.; Yang, P.; Pu, Y.; Sun, X.; Yin, H.; Zhang, Y.; Zhang, Y.; Li, Y.; Liu, Y.; Fang, F.; et al. Characterization of Bovine Induced Pluripotent Stem Cells by Lentiviral Transduction of Reprogramming Factor Fusion Proteins. *Int. J. Biol. Sci.* **2012**, *8*, 498–511. [[CrossRef](#)] [[PubMed](#)]
5. Goszczynski, D.E.; Cheng, H.; Demyda-Peyrás, S.; Medrano, J.F.; Wu, J.; Ross, P.J. In Vitro Breeding: Application of Embryonic Stem Cells to Animal Production. *Biol. Reprod.* **2019**, *100*, 885–895. [[CrossRef](#)] [[PubMed](#)]
6. Sampaio, R.V.; Chiaratti, M.R.; Santos, D.C.N.; Bressan, F.F.; Sangalli, J.R.; Sá, A.L.A.; Silva, T.V.G.; Costa, N.N.; Cordeiro, M.S.; Santos, S.S.D.; et al. Generation of Bovine (*Bos indicus*) and Buffalo (*Bubalus bubalis*) Adipose Tissue Derived Stem Cells: Isolation, Characterization, and Multipotentiality. *Genet. Mol. Res.* **2015**, *14*, 53–62. [[CrossRef](#)]
7. Lee, J.; Byeon, J.S.; Gu, N.Y.; Lee, S.; Lee, S.A.; Jeong, D.U.; Ouh, I.O.; Cho, I.S.; Song, J.Y.; Lee, Y.H.; et al. Bovine Tongue Epithelium-Derived Cells: A New Source of Bovine Mesenchymal Stem Cells. *Biosci. Rep.* **2020**, *40*, BSR20181829. [[CrossRef](#)] [[PubMed](#)]
8. Sundaravadivelu, P.K.; Raina, K.; Thool, M.; Ray, A.; Joshi, J.M.; Kaveeshwar, V.; Sudhagar, S.; Lenka, N.; Thummer, R.P. Tissue-restricted stem cells as starting cell source for efficient generation of pluripotent stem cells: An overview. In *Cell Biology and Translational Medicine, Volume 15: Stem Cells in Tissue Differentiation, Regulation and Disease*; Turksen, K., Ed.; Springer International Publishing: Cham, Switzerland, 2022; pp. 151–180, ISBN 978-3-031-02378-1.
9. Takahashi, K.; Yamanaka, S. Induction of Pluripotent Stem Cells from Mouse Embryonic and Adult Fibroblast Cultures by Defined Factors. *Cell* **2006**, *126*, 663–676. [[CrossRef](#)] [[PubMed](#)]
10. Takahashi, K.; Tanabe, K.; Ohnuki, M.; Narita, M.; Ichisaka, T.; Tomoda, K.; Yamanaka, S. Induction of Pluripotent Stem Cells from Adult Human Fibroblasts by Defined Factors. *Cell* **2007**, *131*, 861–872. [[CrossRef](#)] [[PubMed](#)]
11. Machado, L.S.; Pieri, N.C.G.; Botigelli, R.C.; de Castro, R.V.G.; de Souza, A.F.; Bridi, A.; Lima, M.A.; Fantinato Neto, P.; de Figueiredo Pessôa, L.V.; Martins, S.M.M.K.; et al. Generation of Neural Progenitor Cells (NPC) from Porcine Induced Pluripotent Stem Cells (PiPSC). *J. Tissue Eng. Regen. Med.* **2020**, *14*, 1880–1891. [[CrossRef](#)] [[PubMed](#)]

12. Pieri, N.C.G.; de Souza, A.F.; Botigelli, R.C.; Pessôa, L.V.d.F.; Recchia, K.; Machado, L.S.; Glória, M.H.; de Castro, R.V.G.; Leal, D.F.; Fantinato Neto, P.; et al. Porcine Primordial Germ Cell-Like Cells Generated from Induced Pluripotent Stem Cells Under Different Culture Conditions. *Stem Cell Rev. Rep.* **2022**, *18*, 1639–1656. [[CrossRef](#)]
13. West, F.D.; Terlouw, S.L.; Kwon, D.J.; Mumaw, J.L.; Dhara, S.K.; Hasneen, K.; Dobrinsky, J.R.; Stice, S.L. Porcine Induced Pluripotent Stem Cells Produce Chimeric Offspring. *Stem Cells Dev.* **2010**, *19*, 1211–1220. [[CrossRef](#)] [[PubMed](#)]
14. Li, D.; Secher, J.; Hyttel, P.; Ivask, M.; Kolko, M.; Hall, V.J.; Freude, K.K. Generation of Transgene-Free Porcine Intermediate Type Induced Pluripotent Stem Cells. *Cell Cycle* **2018**, *17*, 2547–2563. [[CrossRef](#)]
15. Pessôa, L.V.d.F.; Pires, P.R.L.; del Collado, M.; Pieri, N.C.G.; Recchia, K.; Souza, A.F.; Perecin, F.; da Silveira, J.C.; de Andrade, A.F.C.; Ambrosio, C.E.; et al. Generation and MiRNA Characterization of Equine Induced Pluripotent Stem Cells Derived from Fetal and Adult Multipotent Tissues. *Stem Cells Int.* **2019**, *2019*, 1393791. [[CrossRef](#)]
16. De Castro, R.V.G.; Pieri, N.C.G.; Fantinato Neto, P.; Grizendi, B.M.; Dória, R.G.S.; Meirelles, F.V.; Smith, L.C.; Garcia, J.M.; Bressan, F.F. In Vitro Induction of Pluripotency from Equine Fibroblasts in 20% or 5% Oxygen. *Stem Cells Int.* **2020**, *2020*, 8814989. [[CrossRef](#)]
17. Deng, Y.; Liu, Q.; Luo, C.; Chen, S.; Li, X.; Wang, C.; Liu, Z.; Lei, X.; Zhang, H.; Sun, H.; et al. Generation of Induced Pluripotent Stem Cells from Buffalo (*Bubalus bubalis*) Fetal Fibroblasts with Buffalo Defined Factors. *Stem Cells Dev.* **2012**, *21*, 2485–2494. [[CrossRef](#)] [[PubMed](#)]
18. Bressan, F.F.; Bassanezze, V.; de Figueiredo Pessôa, L.V.; Sacramento, C.B.; Malta, T.M.; Kashima, S.; Fantinato Neto, P.; Strefezzi, R.D.F.; Pieri, N.C.G.; Krieger, J.E.; et al. Generation of Induced Pluripotent Stem Cells from Large Domestic Animals. *Stem Cell Res. Ther.* **2020**, *11*, 247. [[CrossRef](#)] [[PubMed](#)]
19. Jiang, Y.; An, X.L.; Yu, H.; Cai, N.N.; Zhai, Y.H.; Li, Q.; Cheng, H.; Zhang, S.; Tang, B.; Li, Z.Y.; et al. Transcriptome Profile of Bovine iPSCs Derived from Sertoli Cells. *Theriogenology* **2020**, *146*, 120–132. [[CrossRef](#)]
20. Kawaguchi, T.; Tsukiyama, T.; Kimura, K.; Matsuyama, S.; Minami, N.; Yamada, M.; Imai, H. Generation of Naïve Bovine Induced Pluripotent Stem Cells Using Piggybac Transposition of Doxycycline-Inducible Transcription Factors. *PLoS ONE* **2015**, *10*, e0135403. [[CrossRef](#)]
21. Bogliotti, Y.S.; Wu, J.; Vilarino, M.; Okamura, D.; Soto, D.A.; Zhong, C.; Sakurai, M.; Sampaio, R.V.; Suzuki, K.; Izpisua Belmonte, J.C.; et al. Efficient Derivation of Stable Primed Pluripotent Embryonic Stem Cells from Bovine Blastocysts. *Proc. Natl. Acad. Sci. USA* **2018**, *115*, 2090–2095. [[CrossRef](#)]
22. Hayashi, K.; Ohta, H.; Kurimoto, K.; Aramaki, S.; Saitou, M. Reconstitution of the Mouse Germ Cell Specification Pathway in Culture by Pluripotent Stem Cells. *Cell* **2011**, *146*, 519–532. [[CrossRef](#)]
23. Hayashi, K. Offspring from Oocytes Derived from in Vitro Primordial Germ Cell-like Cells in Mice. *Science* **2012**, *971*, 10–15. [[CrossRef](#)]
24. Hikabe, O.; Hamazaki, N.; Nagamatsu, G.; Obata, Y.; Hirao, Y.; Hamada, N.; Shimamoto, S.; Imamura, T.; Nakashima, K.; Saitou, M.; et al. Reconstitution in Vitro of the Entire Cycle of the Mouse Female Germ Line. *Nature* **2016**, *539*, 299–303. [[CrossRef](#)] [[PubMed](#)]
25. Canizo, J.R.; Vazquez Echegaray, C.; Klisch, D.; Aller, J.F.; Paz, D.A.; Alberio, R.H.; Alberio, R.; Guberman, A.S. Exogenous Human OKSM Factors Maintain Pluripotency Gene Expression of Bovine and Porcine IPS-like Cells Obtained with STEMCCA Delivery System. *BMC Res. Notes* **2018**, *11*, 509. [[CrossRef](#)]
26. Han, X.; Han, J.; Ding, F.; Cao, S.; Lim, S.S.; Dai, Y.; Zhang, R.; Zhang, Y.; Lim, B.; Li, N. Generation of Induced Pluripotent Stem Cells from Bovine Embryonic Fibroblast Cells. *Cell Res.* **2011**, *21*, 1509–1512. [[CrossRef](#)]
27. Zhao, L.; Wang, Z.; Zhang, J.; Yang, J.; Gao, X.; Wu, B.; Zhao, G.; Bao, S.; Hu, S.; Liu, P.; et al. Characterization of the Single-Cell Derived Bovine Induced Pluripotent Stem Cells. *Tissue Cell* **2017**, *49*, 521–527. [[CrossRef](#)]
28. Cravero, D.; Martignani, E.; Miretti, S.; Accornero, P.; Pauciuolo, A.; Sharma, R.; Donadeu, F.X.; Baratta, M. Generation of Induced Pluripotent Stem Cells from Bovine Epithelial Cells and Partial Redirection toward a Mammary Phenotype In Vitro. *Cell. Reprogr.* **2015**, *17*, 211–220. [[CrossRef](#)]
29. Wang, S.W.; Wang, S.S.W.; Wu, D.C.; Lin, Y.C.; Ku, C.C.; Wu, C.C.; Chai, C.Y.; Lee, J.N.; Tsai, E.M.; Lin, C.L.S.; et al. Androgen Receptor-Mediated Apoptosis in Bovine Testicular Induced Pluripotent Stem Cells in Response to Phthalate Esters. *Cell Death Dis.* **2013**, *4*, e907. [[CrossRef](#)]
30. Talluri, T.R.; Kumar, D.; Glage, S.; Garrels, W.; Ivics, Z.; Debowski, K.; Behr, R.; Niemann, H.; Kues, W.A. Derivation and Characterization of Bovine Induced Pluripotent Stem Cells by Transposon-Mediated Reprogramming. *Cell. Reprogr.* **2015**, *17*, 131–140. [[CrossRef](#)] [[PubMed](#)]
31. Wu, J.; Platero-Luengo, A.; Sakurai, M.; Sugawara, A.; Gil, M.A.; Yamauchi, T.; Suzuki, K.; Bogliotti, Y.S.; Cuello, C.; Morales Valencia, M.; et al. Interspecies Chimerism with Mammalian Pluripotent Stem Cells. *Cell* **2017**, *168*, 473–486.e15. [[CrossRef](#)]
32. Raab, S.; Klingenstein, M.; Liebau, S.; Linta, L. A Comparative View on Human Somatic Cell Sources for iPSC Generation. *Stem Cells Int.* **2014**, *2014*, 768391. [[CrossRef](#)] [[PubMed](#)]
33. Ray, A.; Joshi, J.M.; Sundaravadivelu, P.K.; Raina, K.; Lenka, N.; Kaveeshwar, V.; Thummer, R.P. An Overview on Promising Somatic Cell Sources Utilized for the Efficient Generation of Induced Pluripotent Stem Cells. *Stem Cell Rev. Rep.* **2021**, *17*, 1954–1974. [[CrossRef](#)] [[PubMed](#)]

34. Pessôa, L.V.d.F.; Bressan, F.F.; Freude, K.K. Induced Pluripotent Stem Cells throughout the Animal Kingdom: Availability and Applications. *World J. Stem Cells* **2019**, *11*, 491–505. [[CrossRef](#)]
35. Gruber, H.E.; Somayaji, S.; Riley, F.; Hoelscher, G.L.; Norton, H.J.; Ingram, J.; Hanley, E.N. Human Adipose-Derived Mesenchymal Stem Cells: Serial Passaging, Doubling Time and Cell Senescence. *Biotech. Histochem.* **2012**, *87*, 303–311. [[CrossRef](#)]
36. Sumer, H.; Liu, J.; Malaver-Ortega, L.F.; Lim, M.L.; Khodadadi, K.; Verma, P.J. NANOG Is a Key Factor for Induction of Pluripotency in Bovine Adult Fibroblasts. *J. Anim. Sci.* **2011**, *89*, 2708–2716. [[CrossRef](#)]
37. Czapla, J.; Matuszczak, S.; Kulik, K.; Wiśniewska, E.; Pilny, E.; Jarosz-Biej, M.; Smolarczyk, R.; Sirek, T.; Zembala, M.O.; Zembala, M.; et al. The Effect of Culture Media on Large-Scale Expansion and Characteristic of Adipose Tissue-Derived Mesenchymal Stromal Cells. *Stem Cell Res. Ther.* **2019**, *10*, 235. [[CrossRef](#)]
38. Kolios, G.; Moodley, Y. Introduction to Stem Cells and Regenerative Medicine. *Respiration* **2012**, *85*, 3–10. [[CrossRef](#)]
39. Zaim, M.; Karaman, S.; Cetin, G.; Isik, S. Donor Age and Long-Term Culture Affect Differentiation and Proliferation of Human Bone Marrow Mesenchymal Stem Cells. *Ann. Hematol.* **2012**, *91*, 1175–1186. [[CrossRef](#)]
40. Kretlow, J.D.; Jin, Y.Q.; Liu, W.; Zhang, W.J.; Hong, T.H.; Zhou, G.; Baggett, L.S.; Mikos, A.G.; Cao, Y. Donor Age and Cell Passage Affects Differentiation Potential of Murine Bone Marrow-Derived Stem Cells. *BMC Cell Biol.* **2008**, *9*, 60. [[CrossRef](#)]
41. Ruiz, S.; Panopoulos, A.D.; Herrerías, A.; Bissig, K.-D.; Lutz, M.; Berggren, W.T.; Verma, I.M.; Belmonte, J.C.I. A High Proliferation Rate Is Required for Cell Reprogramming and Maintenance of Human Embryonic Stem Cell Identity. *Curr. Biol.* **2011**, *21*, 45–52. [[CrossRef](#)]
42. Bessi, B.W.; Botigelli, R.C.; Pieri, N.C.G.; Machado, L.S.; Cruz, J.B.; de Moraes, P.; de Souza, A.F.; Recchia, K.; Barbosa, G.; de Castro, R.V.G.; et al. Cattle In Vitro Induced Pluripotent Stem Cells Generated and Maintained in 5 or 20% Oxygen and Different Supplementation. *Cells* **2021**, *10*, 1531. [[CrossRef](#)] [[PubMed](#)]
43. Nicola, N.A.; Babon, J.J. Leukemia Inhibitory Factor (LIF). *Cytokine Growth Factor Rev.* **2015**, *26*, 533–544. [[CrossRef](#)] [[PubMed](#)]
44. Katoh, M. Therapeutics Targeting FGF Signaling Network in Human Diseases. *Trends Pharmacol. Sci.* **2016**, *37*, 1081–1096. [[CrossRef](#)]