

Figure S1-supplementary material. A new nodule with a diameter of 0.8 cm (SUVmax = 10.4) in the deltoid muscle of right shoulder (A) and another new nodule with a diameter of 1.0 cm (SUVmax = 6.3) in the right ilium (B).

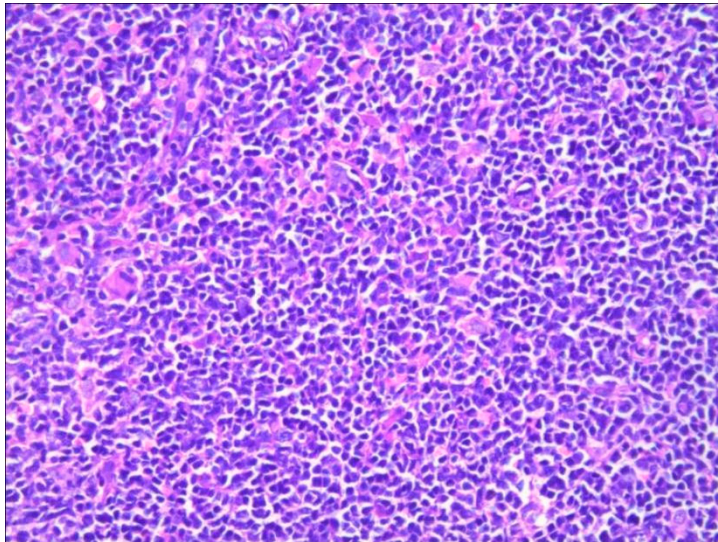


Figure S2-supplementary material. Hematoxylin and eosin staining, $\times 400$ magnification. This is the $\times 400$ magnification of HE staining ($\times 100$) in Figure-1b in the main text.

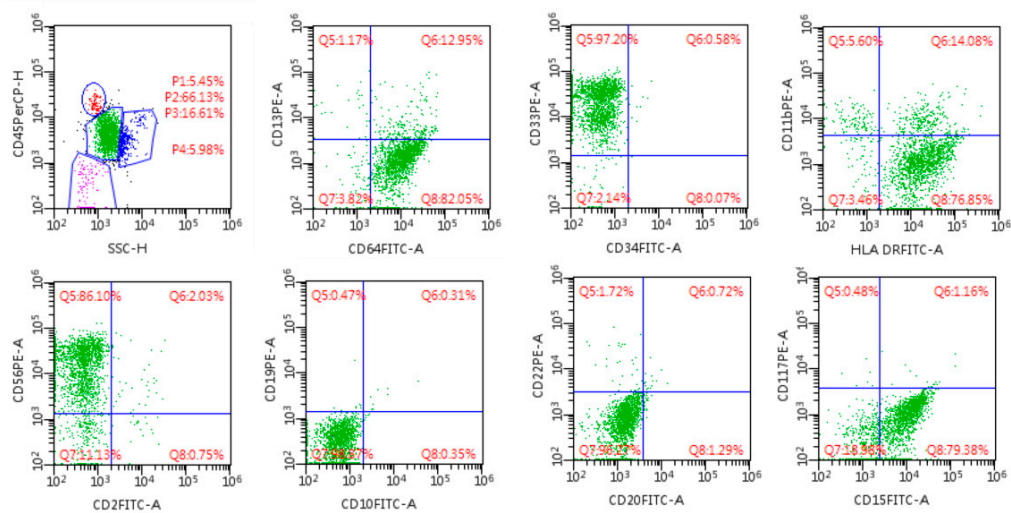


Figure S3-supplementary material. Marrow flow cytometry indicated that promyelocytes accounted for 66.13%, cell phenotype: CD5- / CD7- / CD10- / CD19- / CD11b (partial +) / HLA DR + / CD117- / CD15 + / CD33 + / CD34- / CD56 + / CD13- / CD64 + / CD20- / CD22-, in line with acute myeloid leukemia (AML-M5).

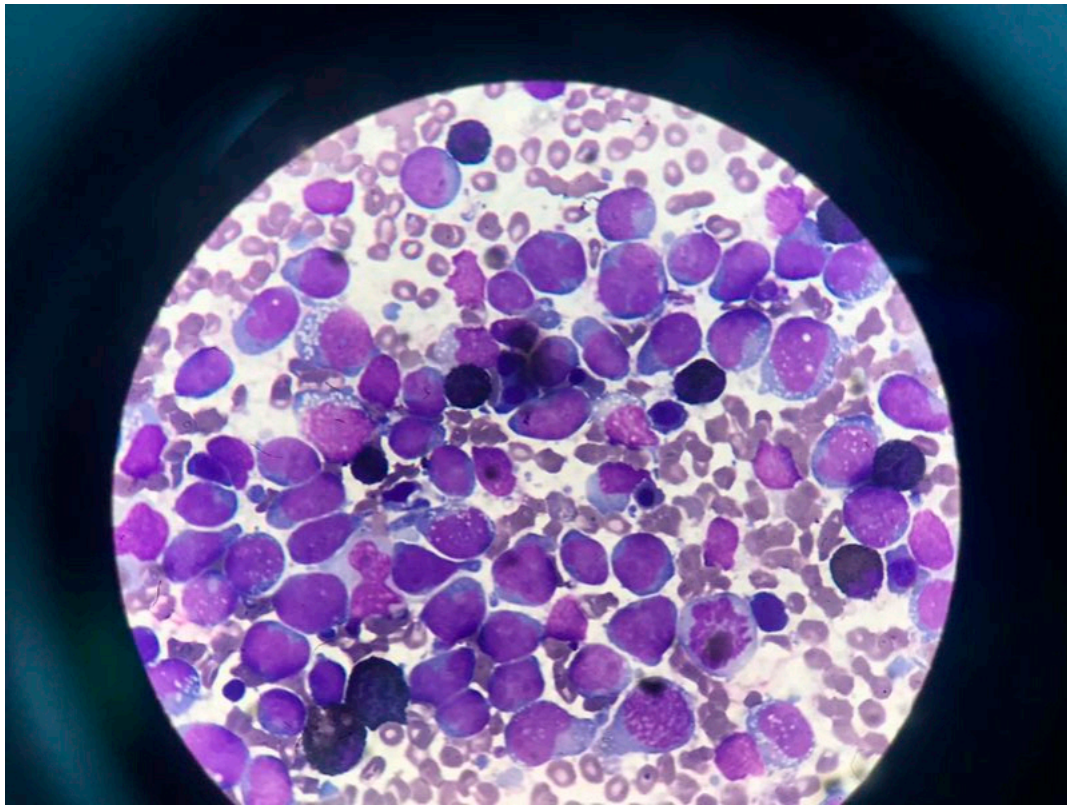


Figure S4-supplementary material. Bone marrow smear showed nucleated cell proliferation was significantly active, blasts accounted for 72%; peroxidase staining was negative.