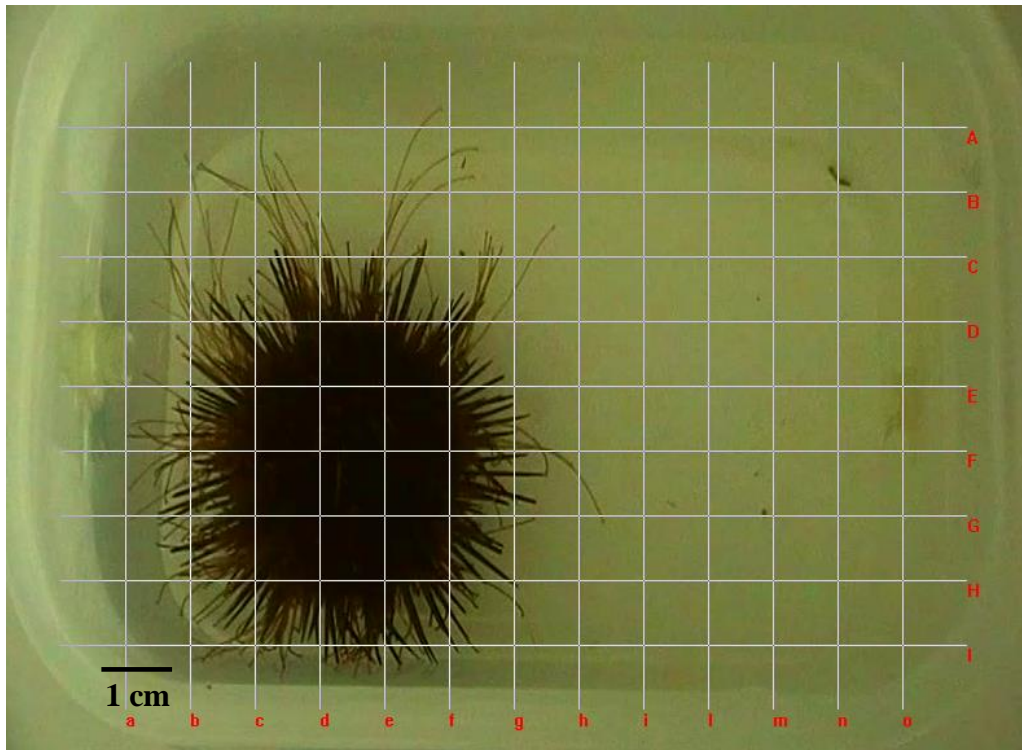
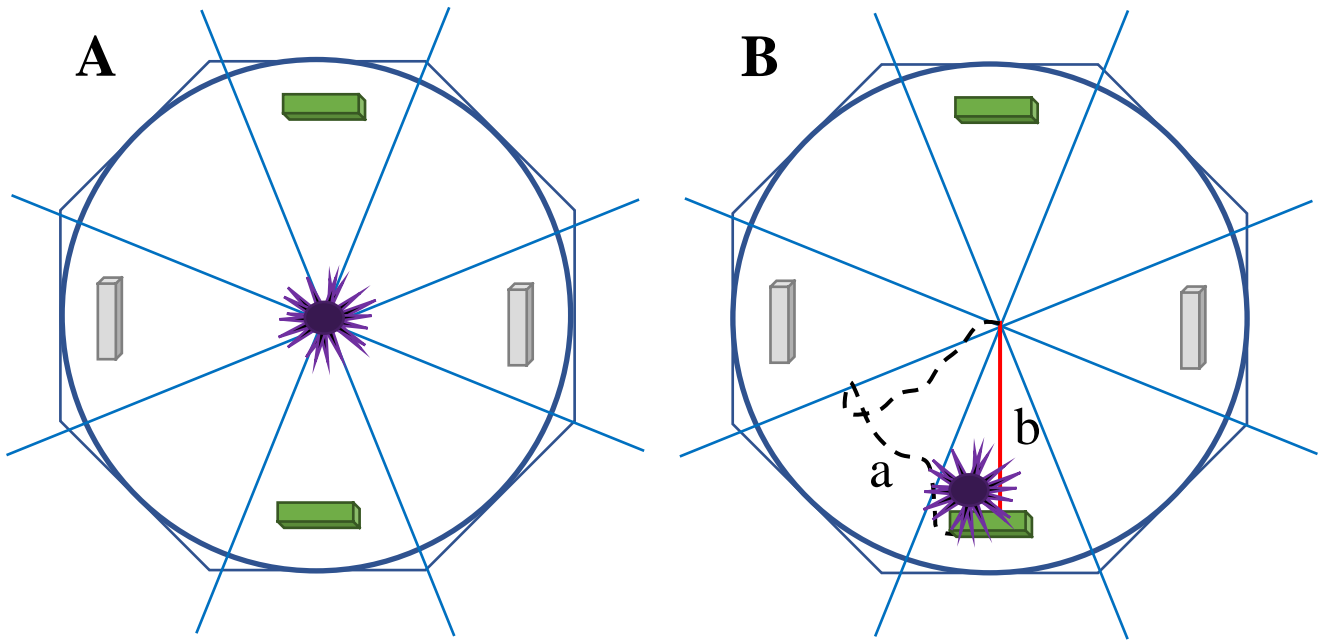


**Figure S1.** Experimental layout used to test the responses of sea urchins to waterborne chemical stimuli.



**Figure S2.** Recording layout of the sea urchin movements: video photogram showing the experimental tank with the superimposed grid, composed by 13 vertical (a–o) + 9 horizontal (A–I) evenly spaced lines, used to cover the entire area of sea urchin movements.



**Figure S3.** Diagram of the study setup: (A) scheme of the experimental arena with the PVC dispenser (grey: Blank PVC (attractant-free) dispensers; green: PVC/stimulus mixture) and the sea urchin positioned in the center of the experimental arena; (B) scheme of an example of the actual (a: dashed black line) and straight (b: red line) trajectories toward the target.