

Fig S1. GC/MS chromatogram; **A)** *U. lactuca* (Methylene chloride extract), and structure, formula, molecular weight, CAS number and the relative abundance of the most four abundant metabolites **B)** n-Hexadecanoic acid **C)** 2-Pentadecanone, 6,10,14-trimethyl- **D)** Phytol **E)** Isochiapin B.

A

RT: 0.00 - 45.27 SM: 15B

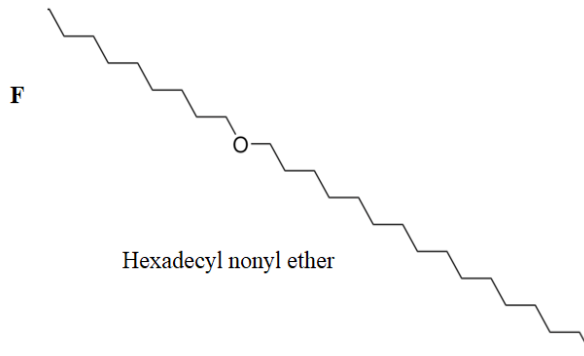
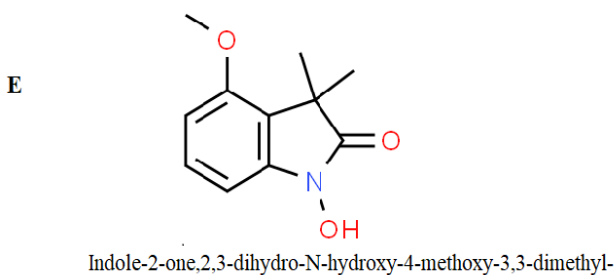
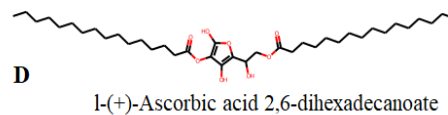
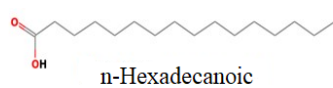
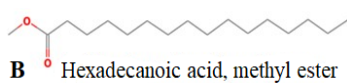
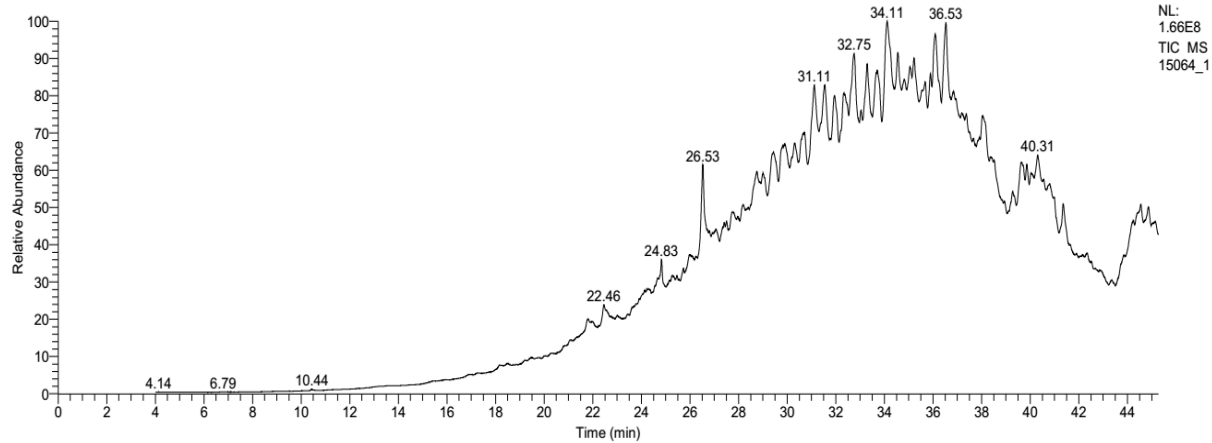


Fig S2. A) GC/MS chromatogram of acetone extract of *T. ornata* and the formula, molecular weight, CAS number and the relative abundance of the most abundant metabolites **B)** Hexadecanoic acid, methyl ester **C)** n-Hexadecanoic acid **D)** L-(+)-Ascorbic acid 2,6-dihexadecanoate and **E)** Indole-2-one,2,3-dihydro-N-hydroxy-4-methoxy-3,3-dimethyl- **F)** Hexadecyl nonyl ether