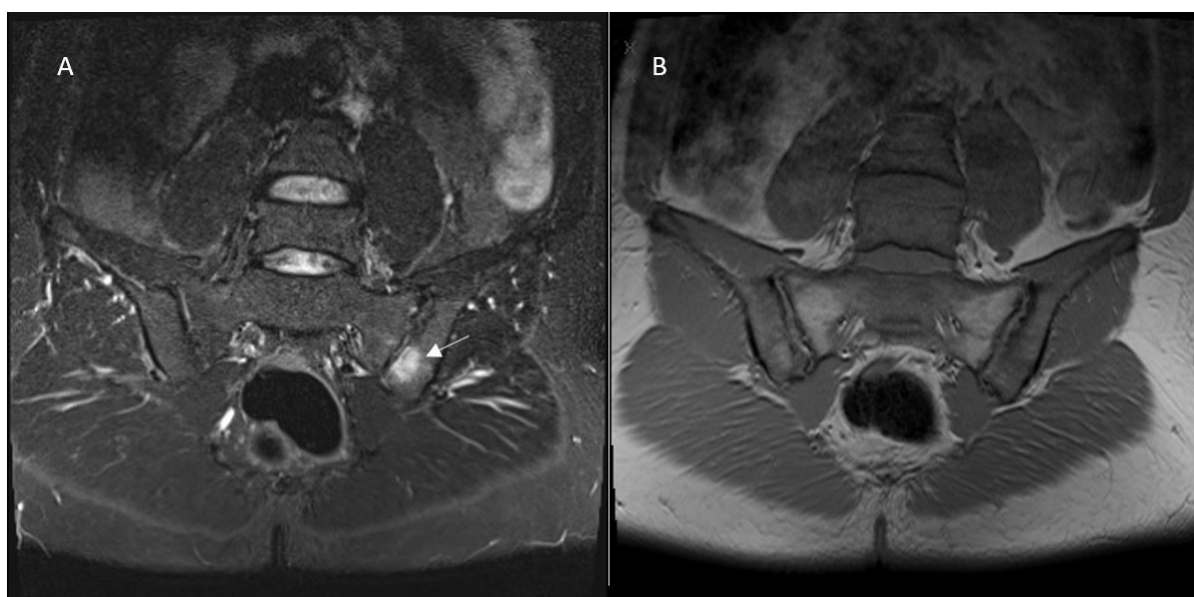




Supplementary Figure S1. Acute anterior uveitis of the left eye. Mixed conjunctival and ciliary injection, sedimentation of inflammatory material in the anterior chamber—hypopyon (arrow).



Supplementary Figure S2. (A). STIR: Bone marrow edema on the iliac part of left sacroiliac joint which is highly suggestive of axSpA. (B). Corresponding T1W image.