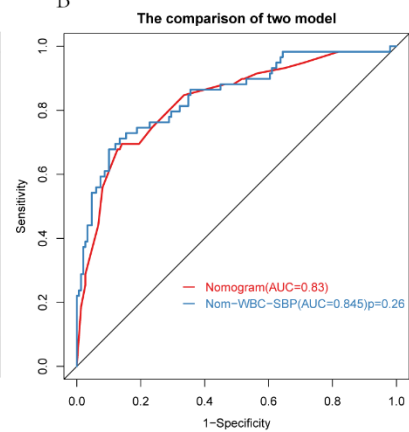


Supplementary Materials:

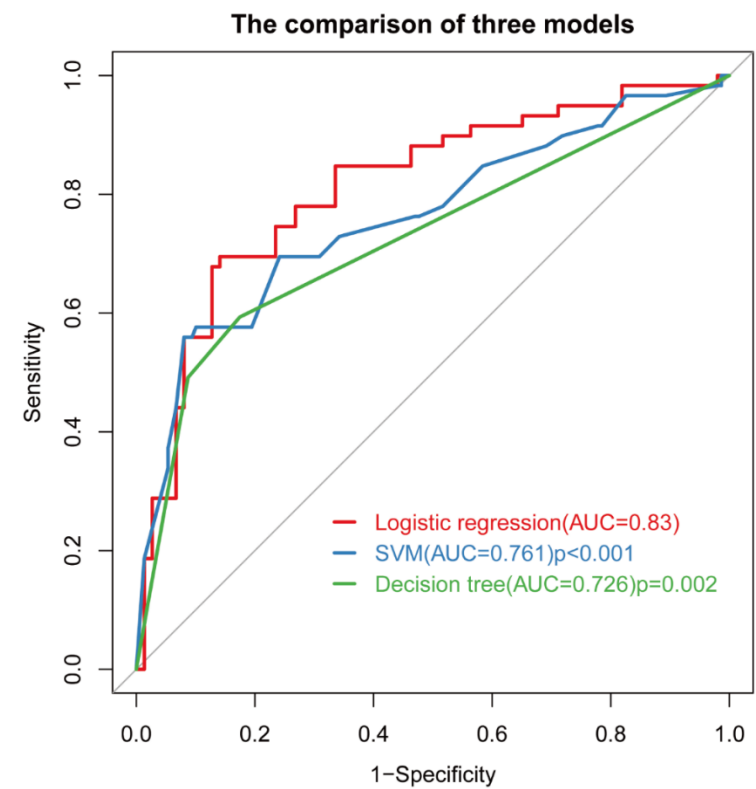
A

Variable	N	Odds ratio	p
Plaque_enhancement			
No	15	Reference	
Mild	132	5.47 (0.86, 108.84)	0.131
Marked	61	28.93 (4.40, 588.77)	0.003
Surface_morphology			
Regular	73	Reference	
Irregular	135	3.26 (1.34, 8.75)	0.013
Plaque_artery_location			
RVA	64	Reference	
LVA	83	0.76 (0.29, 1.97)	0.569
BA	61	3.14 (1.24, 8.29)	0.018
Plaque_dorsal_quadrant			
No	69	Reference	
Yes	139	2.88 (1.24, 7.24)	0.018
SBP	208	1.02 (1.00, 1.04)	0.044
WBC	208	1.21 (1.01, 1.48)	0.048

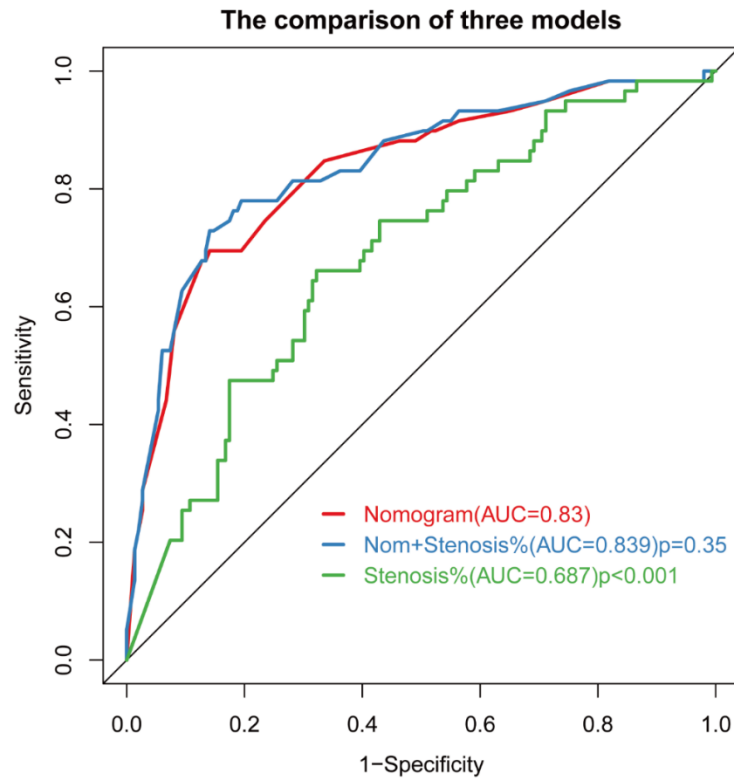
B



Supplementary Figure S1: (A) multivariate logistic regression of the predictors (B) Receiver operating characteristic (ROC) curves of two different predictive models. Nomogram(red) vs. Nomogram+WBC+SBP(blue)(AUC 0.83 vs. 0.845, p=0.26). WBC, white blood cell; SBP, systolic blood pressure



Supplementary Figure S2: Receiver operating characteristic (ROC) curves of different predictive models using logistic regression (red), support vector machine (green) and decision tree (blue).



Supplementary Figure S3: Receiver operating characteristic (ROC) curves of three different predictive models. AUC in Nomogram(red), Nom+Stenosis%(blue), Stenosis%(green) were 0.830, 0.839, 0.687, respectively.