

Supplementary Online Content

Chun-Hou Huang, Yu-Fu Chou, Tsung-Cheng Hsieh and Peir-Rong Chen. Association of Neutrophil-to-Lymphocyte Ratio and Blood-stream Infections with Survival after Curative-Intent Treatment in Elderly Patients with Oral Cavity Squamous Cell Carcinoma. *Diagnostics*

Table S1: Details regarding chemotherapy regimen

Table S2: Receiver operating characteristic curve analysis for bloodstream infection

Table S3: Time-dependent receiver operating characteristic curve analysis for overall and disease-free survival

Figure S1: Study flow chart

This supplementary material has been provided by the authors to give readers additional information about their work.

Table S1: Details regarding chemotherapy regimen

| Variables | Total | BSI | |
|-------------------------------------|-----------|-----------|-----------|
| | | Yes | No |
| Adjuvant chemotherapy, n (%) | 28 (100) | 2 (7.1) | 26 (92.9) |
| Tegafur-uracil | 24 (85.7) | 0 (0) | 24 (92.3) |
| Cisplatin | 4 (14.3) | 2 (100) | 2 (7.7) |
| Adjuvant CRT, n (%) | 84 (100) | 15 (17.9) | 69 (82.1) |
| Tegafur-uracil | 56 (66.7) | 10 (66.7) | 46 (66.7) |
| Cisplatin | 23 (27.4) | 4 (26.7) | 19 (27.5) |
| PF | 5 (5.9) | 1 (6.6) | 4 (5.8) |

BSI, bloodstream infection; CRT, concurrent chemoradiotherapy; PF, cisplatin plus 5-FU.

Table S2: Receiver operating characteristic curve analysis of factors related to bloodstream infection

| Parameter | Bloodstream infection | | |
|--|-----------------------|-------|-------|
| | LMR | NLR | PLR |
| AUC | 0.542 | 0.691 | 0.538 |
| Optimal sensitivity (%) | 0.521 | 0.733 | 0.520 |
| Optimal specificity (%) | 0.594 | 0.604 | 0.642 |
| Maximizes the sum of sensitivity and specificity | 3.65 | 5 | 149.7 |

AUC: area under curve; LMR: lymphocyte-to-monocyte ratio; NLR: neutrophil-to-lymphocyte ratio; PLR: platelet-to-lymphocyte ratio.

Table S3: Time-dependent receiver operating characteristic curve analysis of factors related to overall and disease-free survival

| Parameter | Overall survival | | | Disease-free survival | | |
|--|------------------|-------|--------|-----------------------|-------|-------|
| | LMR | NLR | PLR | LMR | NLR | PLR |
| AUC | 0.461 | 0.651 | 0.55 | 0.386 | 0.634 | 0.523 |
| Optimal sensitivity (%) | 0.141 | 0.614 | 0.806 | 0.125 | 0.69 | 0.748 |
| Optimal specificity (%) | 0.945 | 0.68 | 0.355 | 1 | 0.664 | 0.39 |
| Maximizes the sum of sensitivity and specificity | 6.4 | 2.9 | 108.56 | 6.4 | 2.9 | 139.3 |

AUC: area under curve; LMR: lymphocyte-to-monocyte ratio; NLR: neutrophil-to-lymphocyte ratio; PLR: platelet-to-lymphocyte ratio.

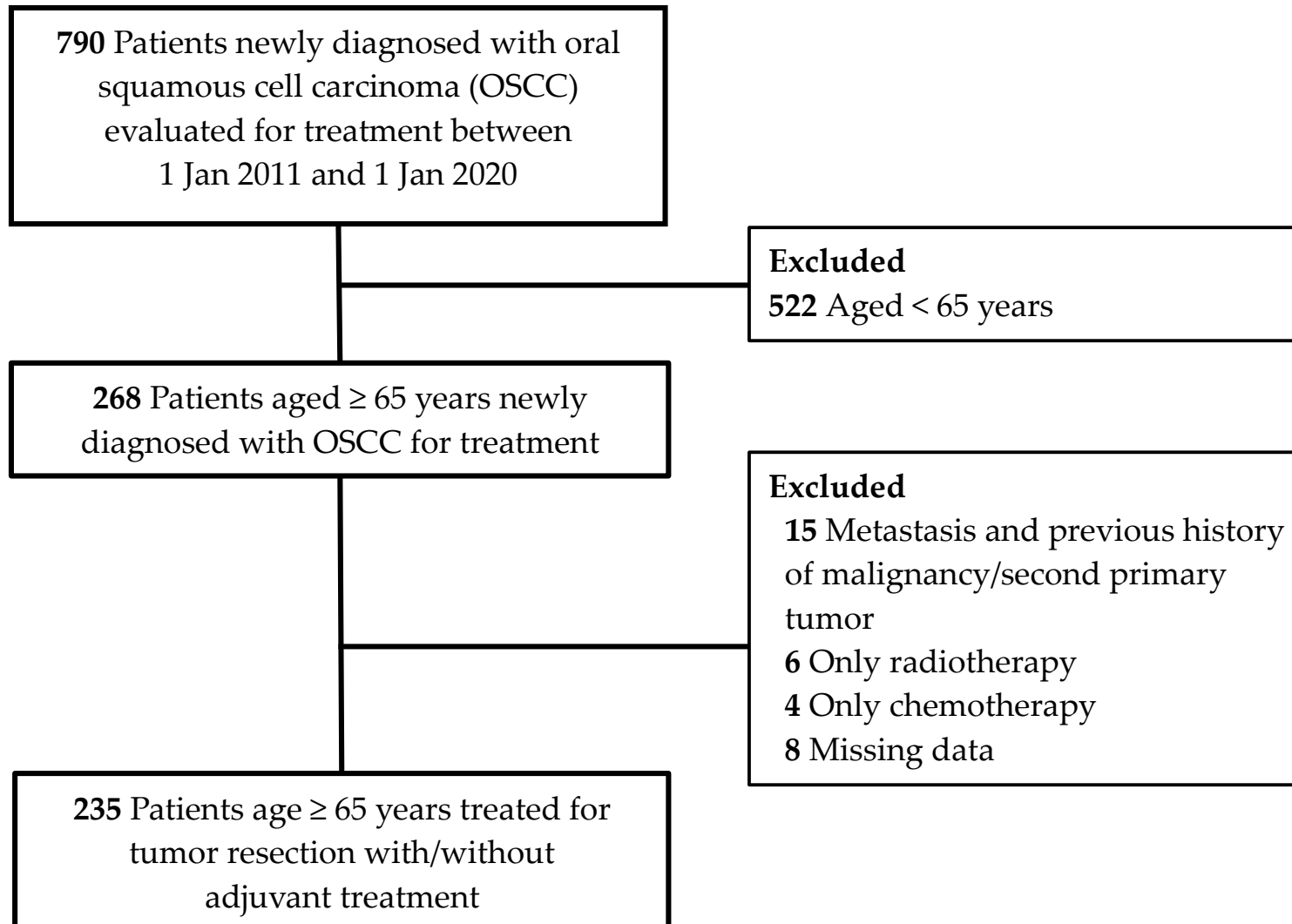


Figure S1: Study flow chart