

Supplementary Materials

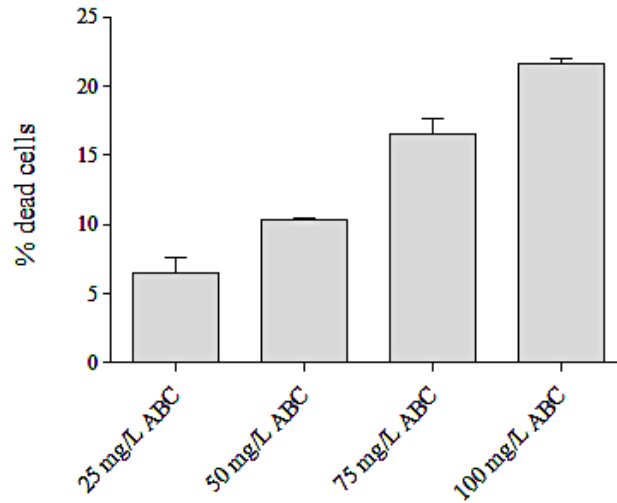


Figure S1: Number of dead cells after treatment of LCL721.221 cells with various ABC concentrations for 24 h. The number of dead cells was calculated by 7-AAD staining and the percentage of dead cells is depicted in the diagram for n=2.

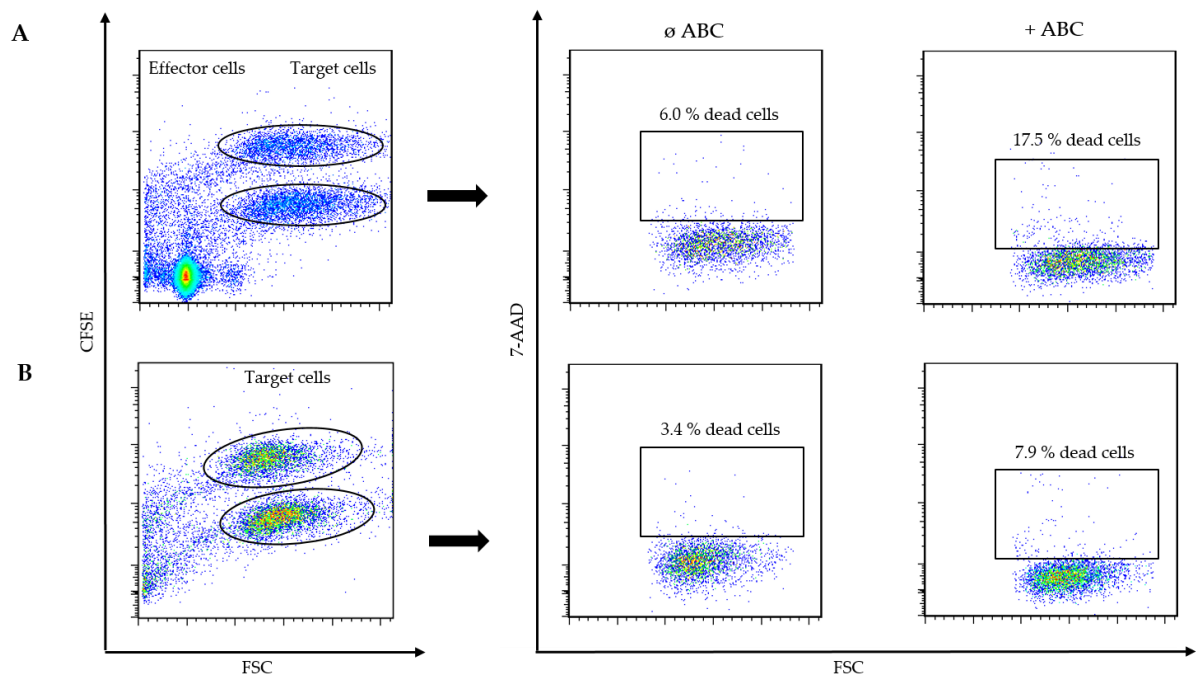


Figure S2: Analysis of the specific cytotoxicity of CD8⁺ cells from an HLA-B*57:01 carrier towards ABC-treated and untreated LCL721.221/HLA-B*57:01 cells. **(A)** CD8⁺ T cells from an HLA-B*57:01 carrier were incubated with LCL721.221/HLA-B*57:01 target cells in a 10:1 ratio for 4 hours. ABC-preincubated target cells were previously stained with 1 μ M CFSE and untreated target cells were stained with 4 μ M CFSE to distinguish between the two target cell populations. After 4 hours of incubation, target cell viability of untreated and ABC-treated cells was determined by 7-AAD staining to calculate the cytotoxic potential of CD8⁺ cells. **(B)** ABC-treated and untreated target cells were incubated for 4 hours in the absence of CD8⁺ cells. Afterwards, target cell viability was determined by 7-AAD staining to calculate the spontaneous cell death of untreated and ABC-treated cells.