

Figure S1. Results of Geneland analyses. **(A)** Number of clusters along the chain after burn-in. **(B)** Map of posterior probability to belong to clusters 1-4 (indicated by dark colors).

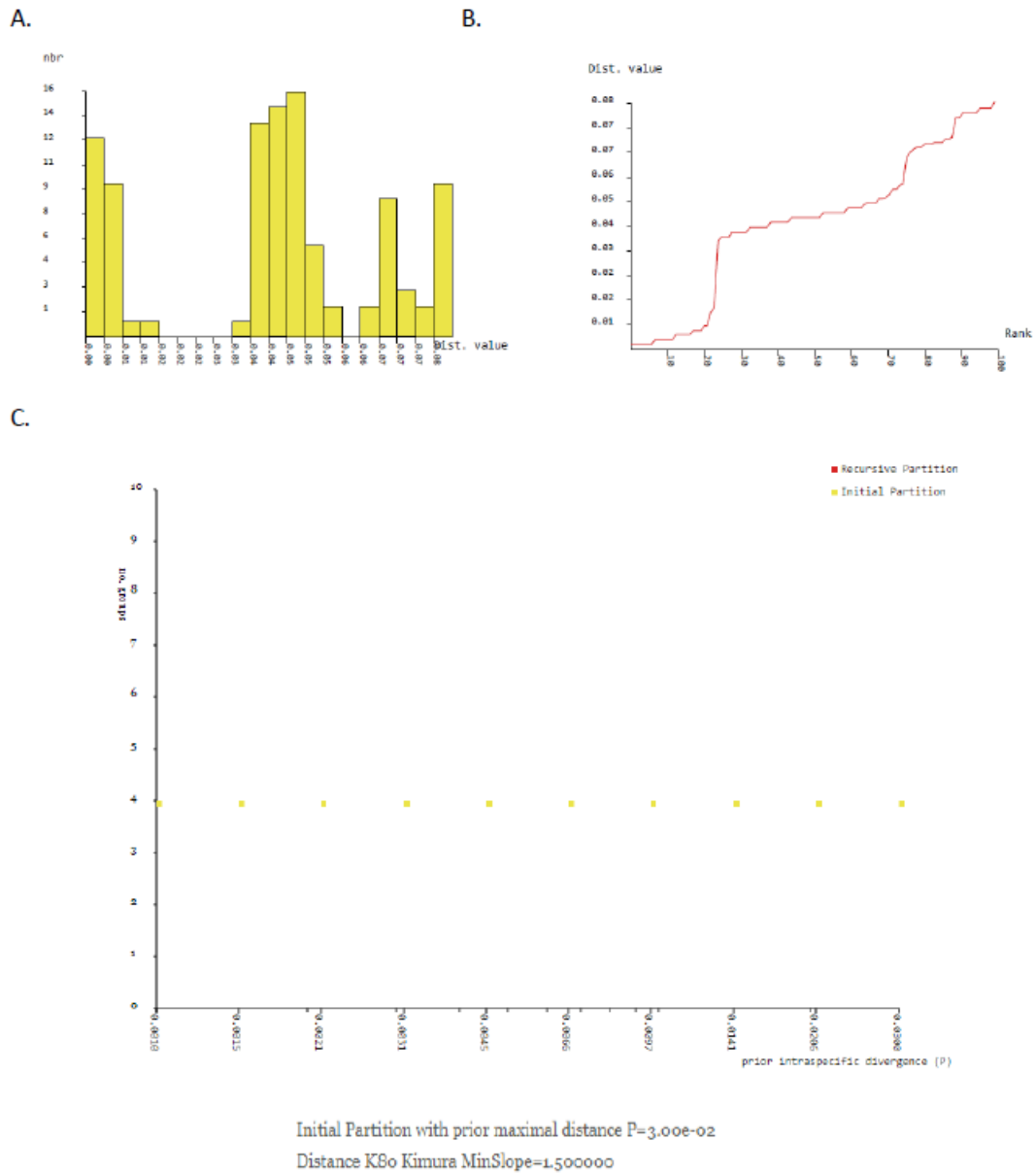


Figure S2. Graphical results of the ABGD analysis. (A) Histogram of pairwise Kimura 2-parameter distances for the COI marker, showing three barcode gaps. (B) Ranked pairwise distances. (C) Number of groups for partitions per value of prior intraspecific divergence.

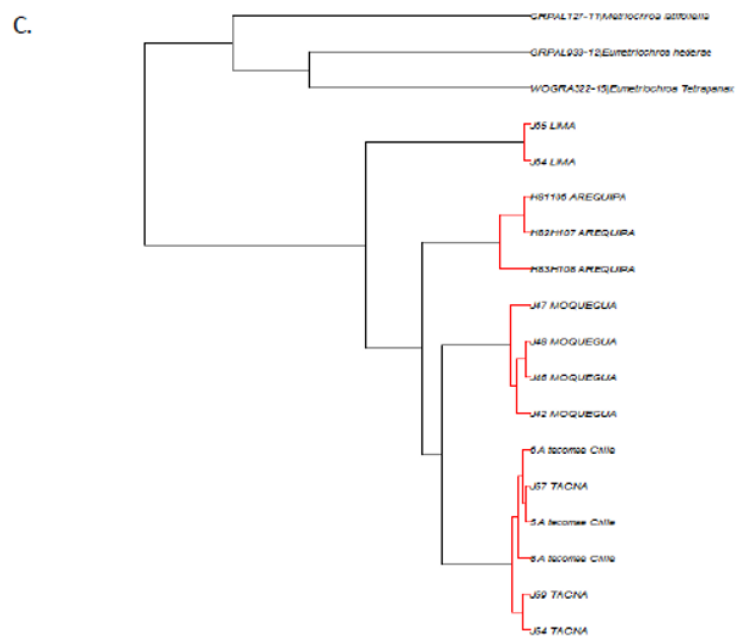
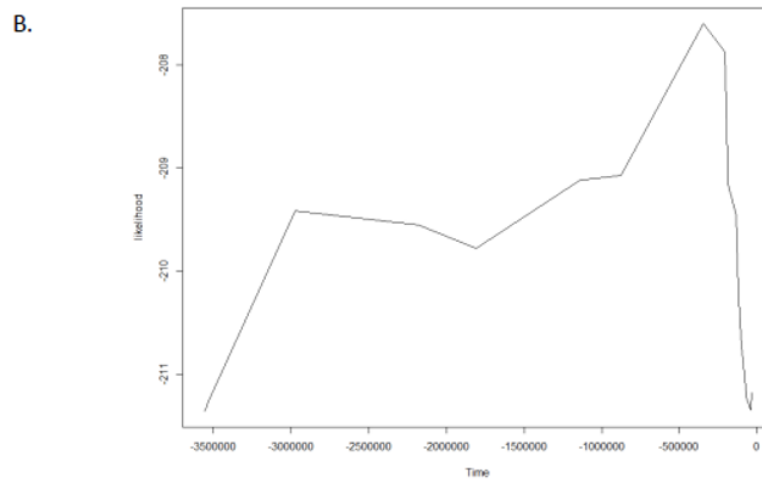
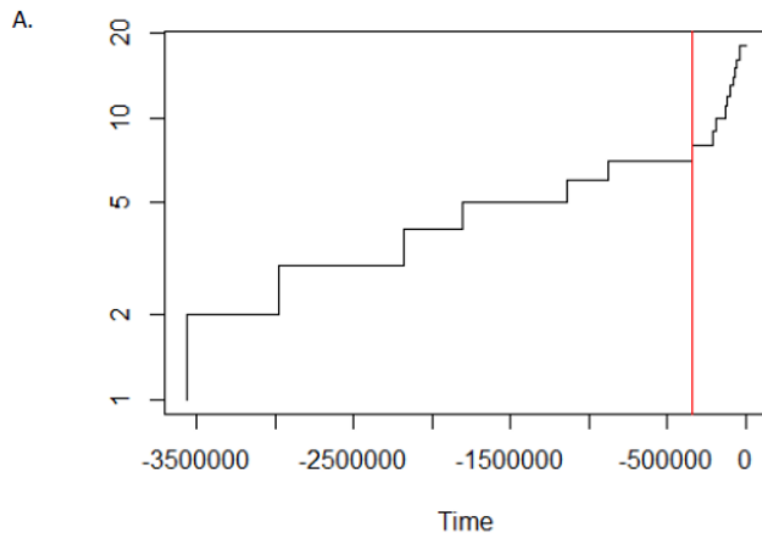


Figure S3. Results of the st-GMYC analysis. (A) Number of lineages over time (years) (red vertical line indicates the threshold time between inter- intraspecific branching). (B) Likelihood surface through time. (C) Tree with species delimited (indicated by red branches).

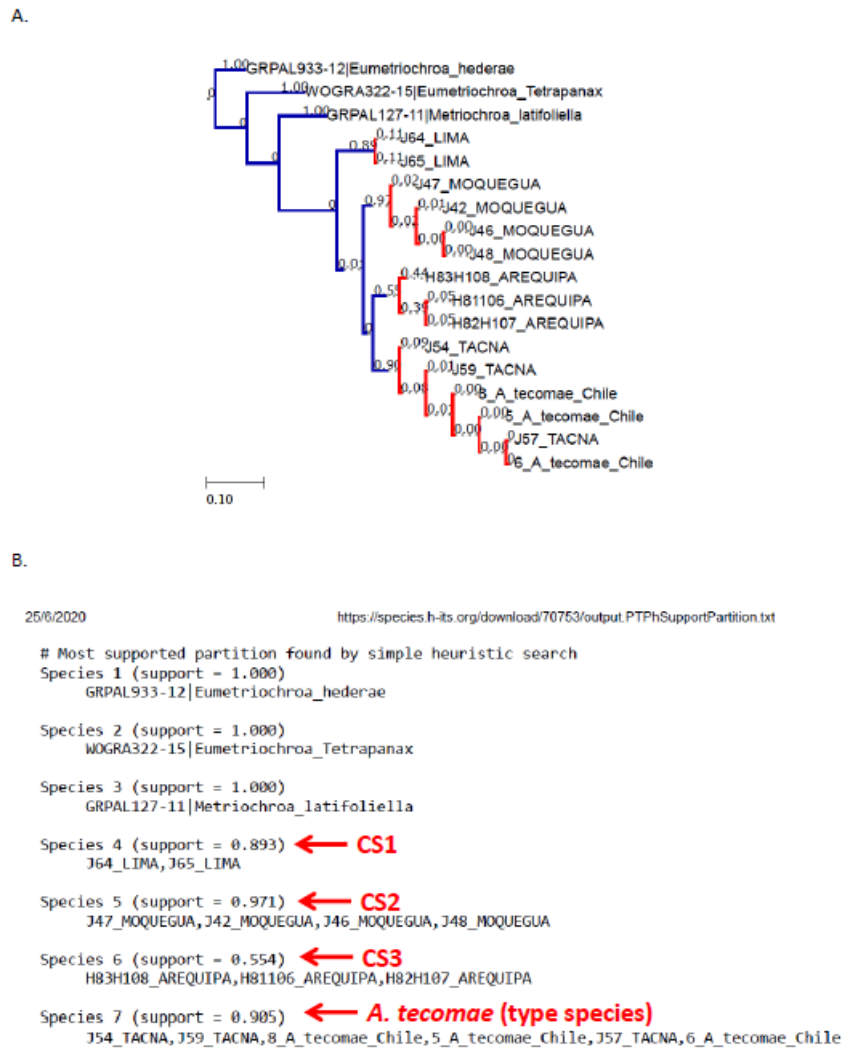


Figure S4. Results of the bPTP analysis. (A) Highest Bayesian supported solution. (B) Delimitation supports for candidate species (CS) of *Angelabella*.