

Figure S1: Genital capsule of *T. brassicae* (A) and *T. evanescens* (B), assigned to group *evanescens*.

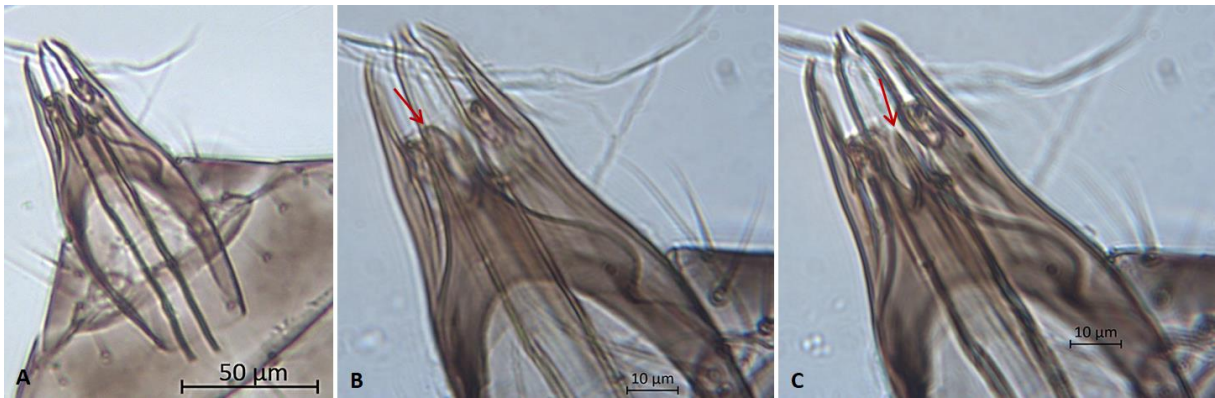


Figure S2: Genital capsule of strain COR, assigned to group *minutum*. Posterior extension of dorsal lamina (B) exceeds intervallosellar process (IVP) (C).



Figure S3: Genital capsule of *T. bourarachae* (A) and *T. pintoii* (B), assigned to group *perkinsi*.

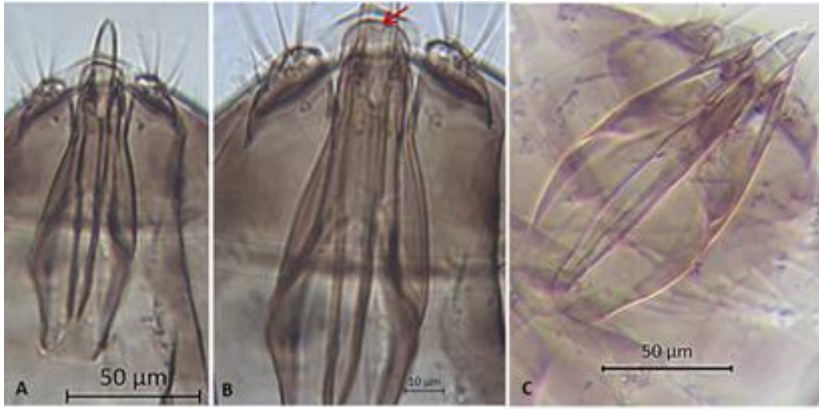


Figure S4: Genital capsule of strain PIC (A: Overall view, B: Posterior extension of dorsal lamina is broad and rounded and exceeds IVP, volsella and paramere), assigned to group *fasciatum*, and *T. dendrolimi* (C, group *dendrolimi*).

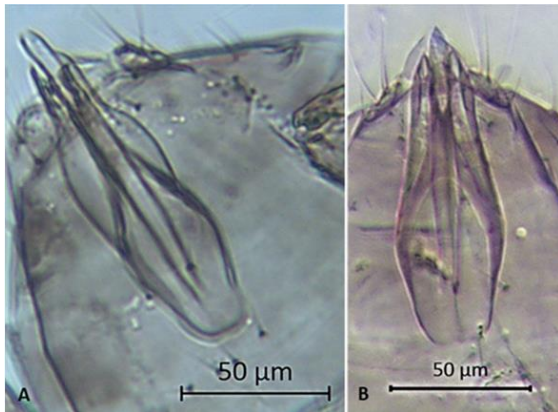


Figure S5. Genital capsule of *T. nerudai* (A) and *T. achaeae* (B).