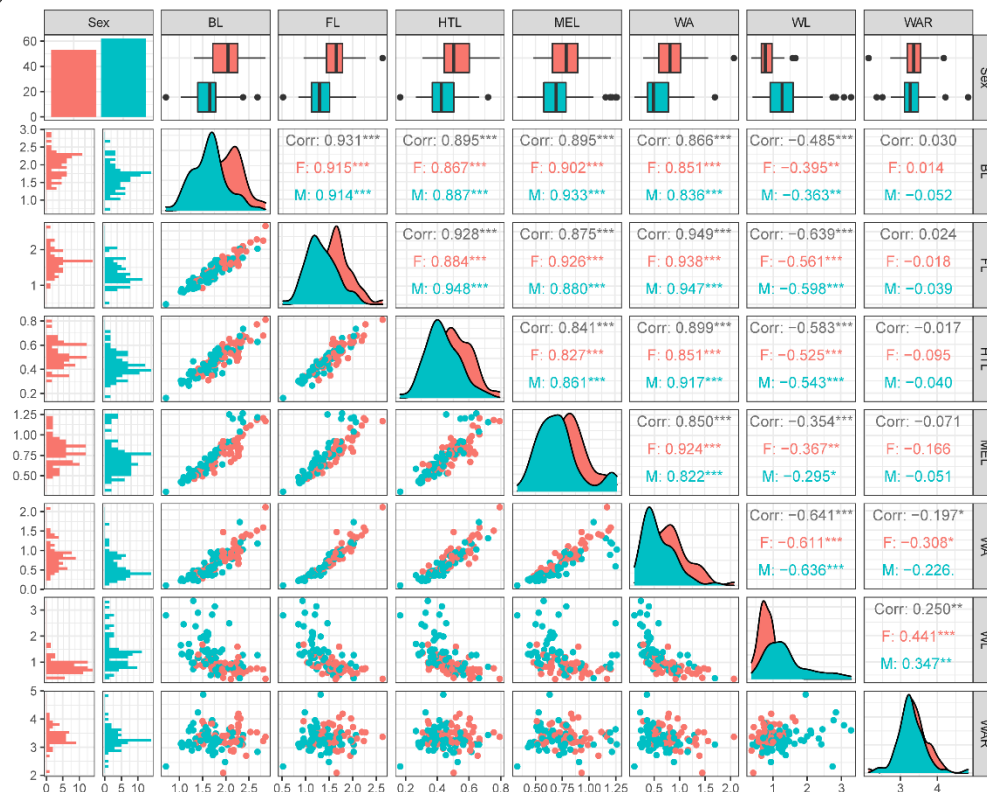


Table S1 Overview of the numbers of analyzed specimens in Pteromalidae and Eulophidae.

Data sources		Pteromalidae		Eulophidae	
		Female	Male	Female	Male
From the field	Number	458	316	415	316
	Altitudinal range	277~4337 m		16~4237 m	
	Genera	24		23	
	Total	774		731	
From the BOLD system	Number	424	208	579	237
	Altitudinal range	4~2052 m		-21~2028 m	
	Genera	41		49	
	Total	632		816	
SUM		1406		1547	

Figure S1 The correlation between seven morphological characteristics of both sexes in Pteromalidae(a) and Eulophidae(b).

(a) Pteromalidae



(b)Eulophidae

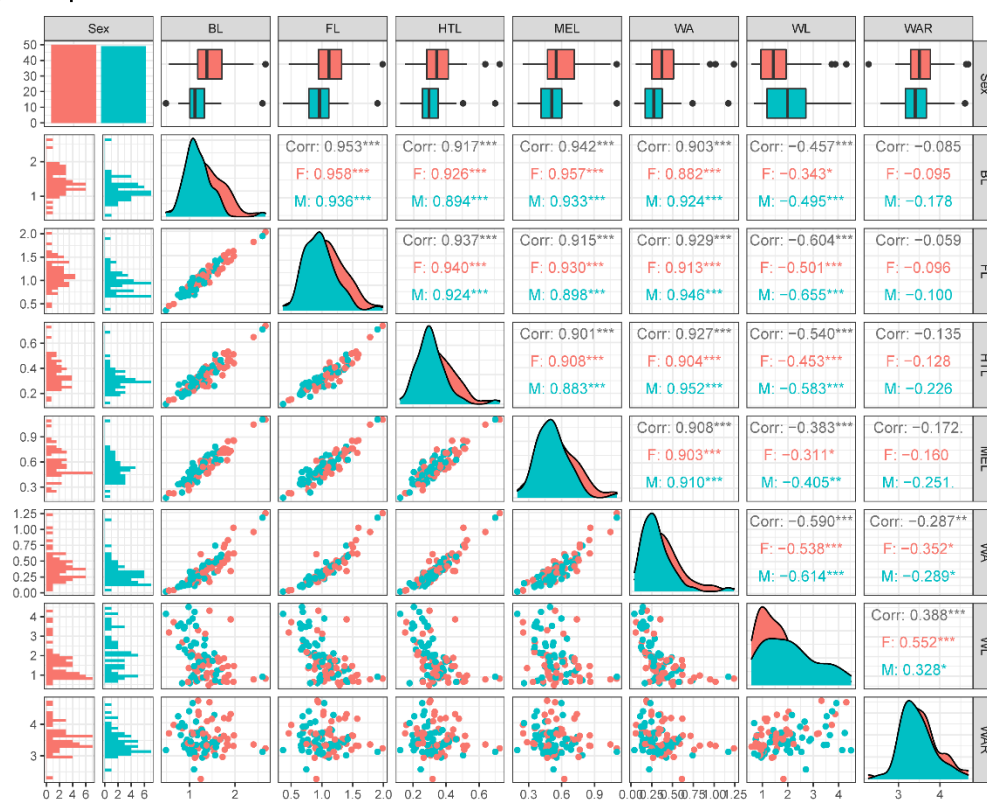


Figure S2 Frequency distribution histogram of the FL of Pteromalidae(a) and Eulophidae(b) from all elevation gradients.

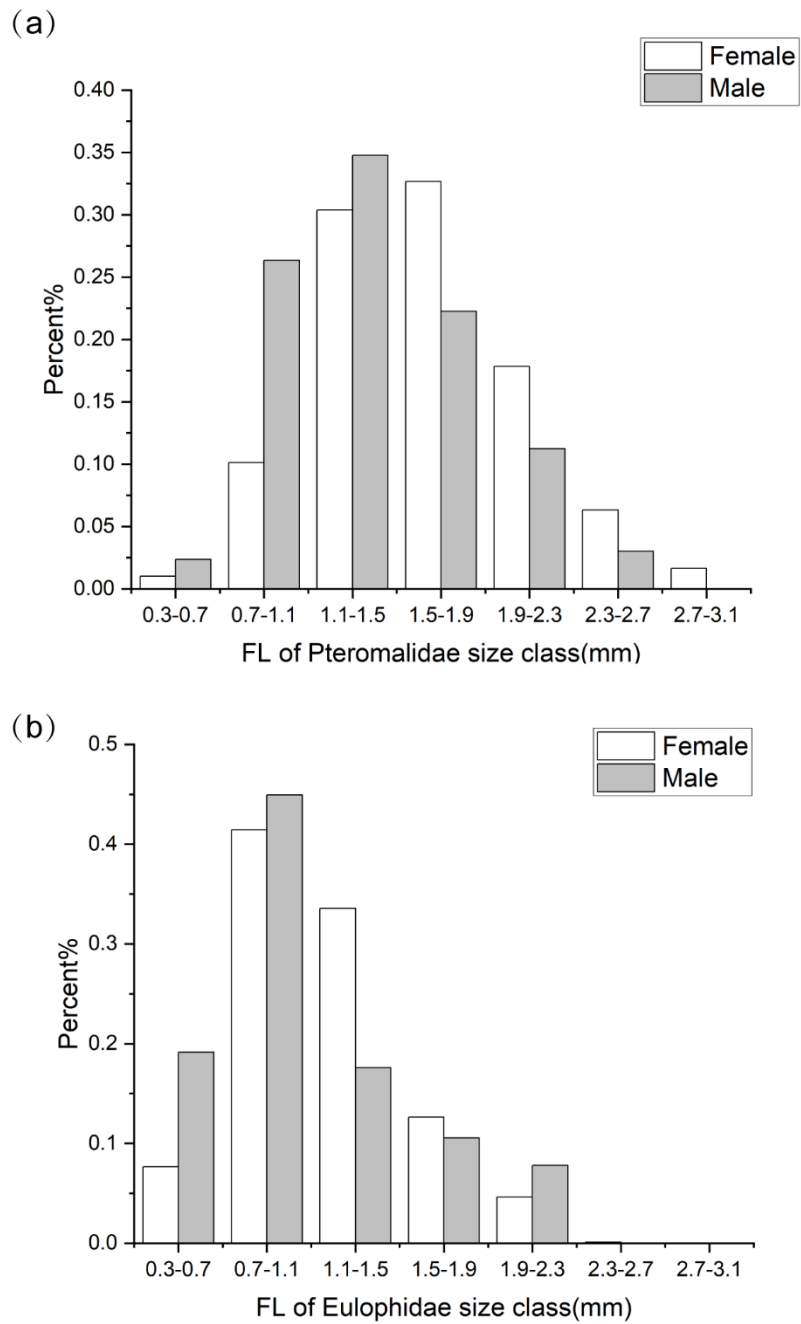
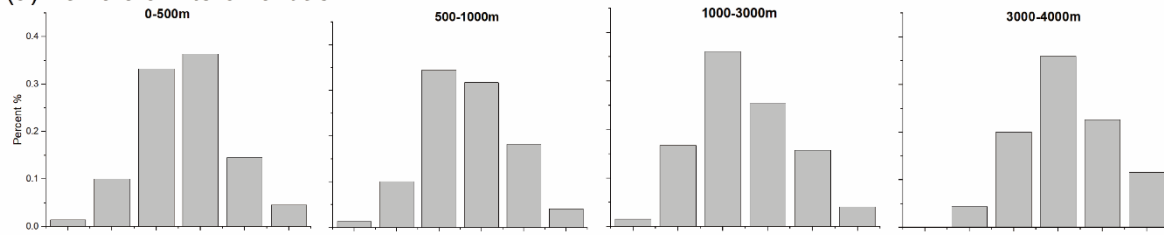
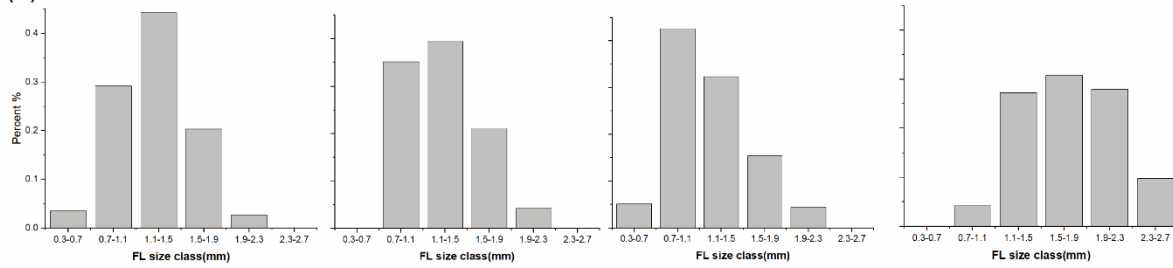


Figure S3 Histogram of the FL of Pteromalidae(a,b) and Eulophidae(c,d) from four elevation ranges.

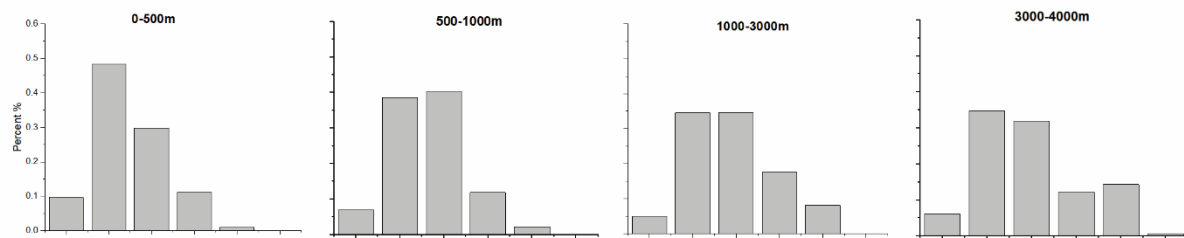
(a) Female of Pteromalidae



(b) Male of Pteromalidae



(c) Female of Eulophidae



(d) Male of Eulophidae

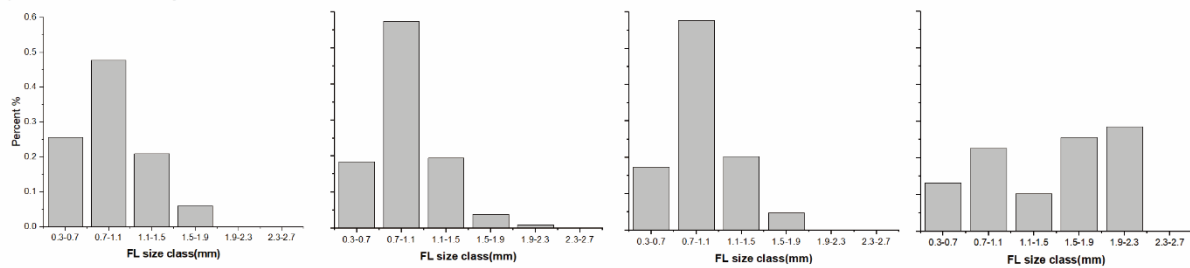


Figure S4 The relationship between forewing length and elevation in six subfamilies from Pteromalidae (a–c) and Eulophidae (d–f).

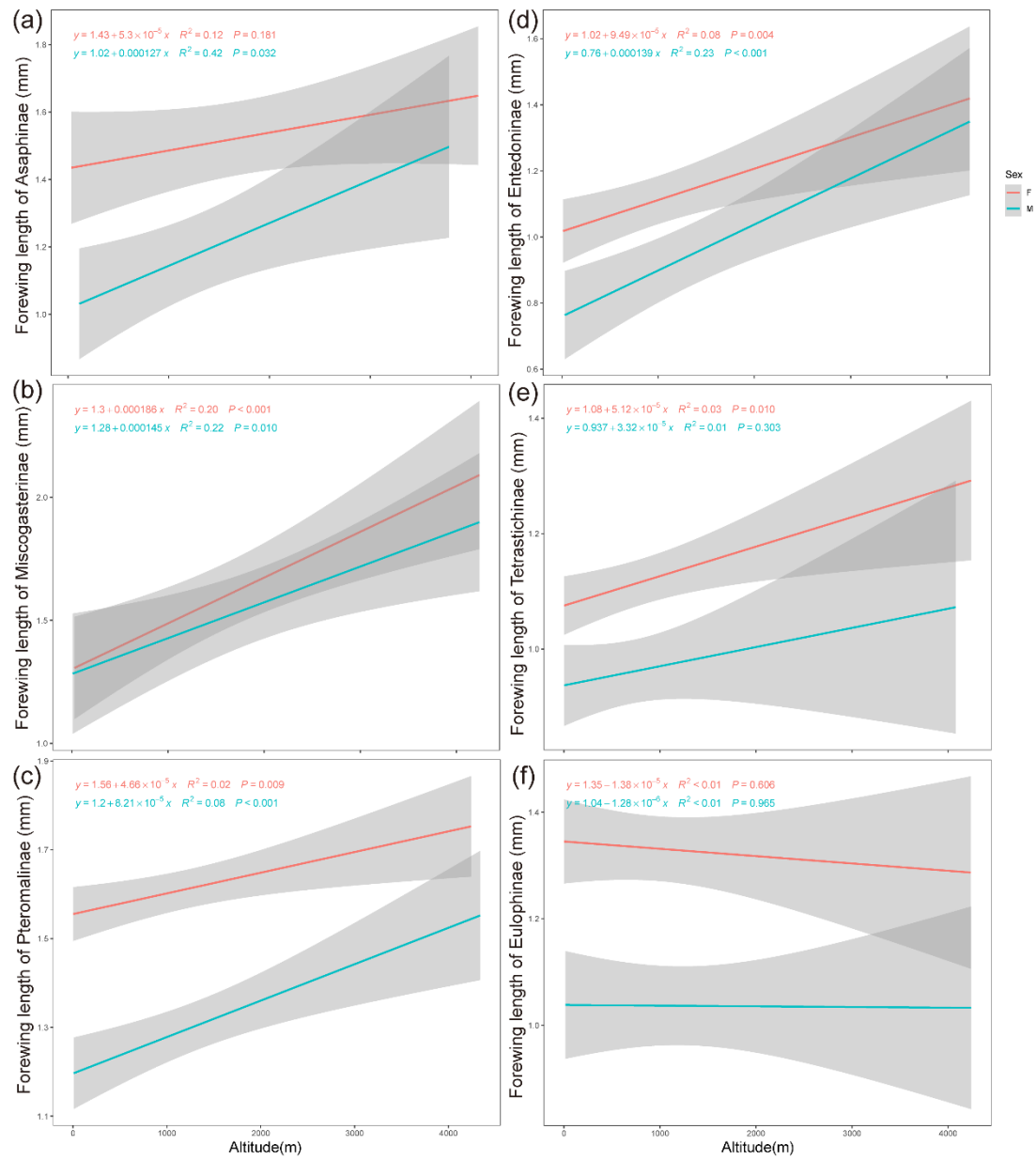


Figure S5 The relationship between forewing length and elevation in eight genera($n \geq 30$ and with wide altitudinal range) of Pteromalidae.

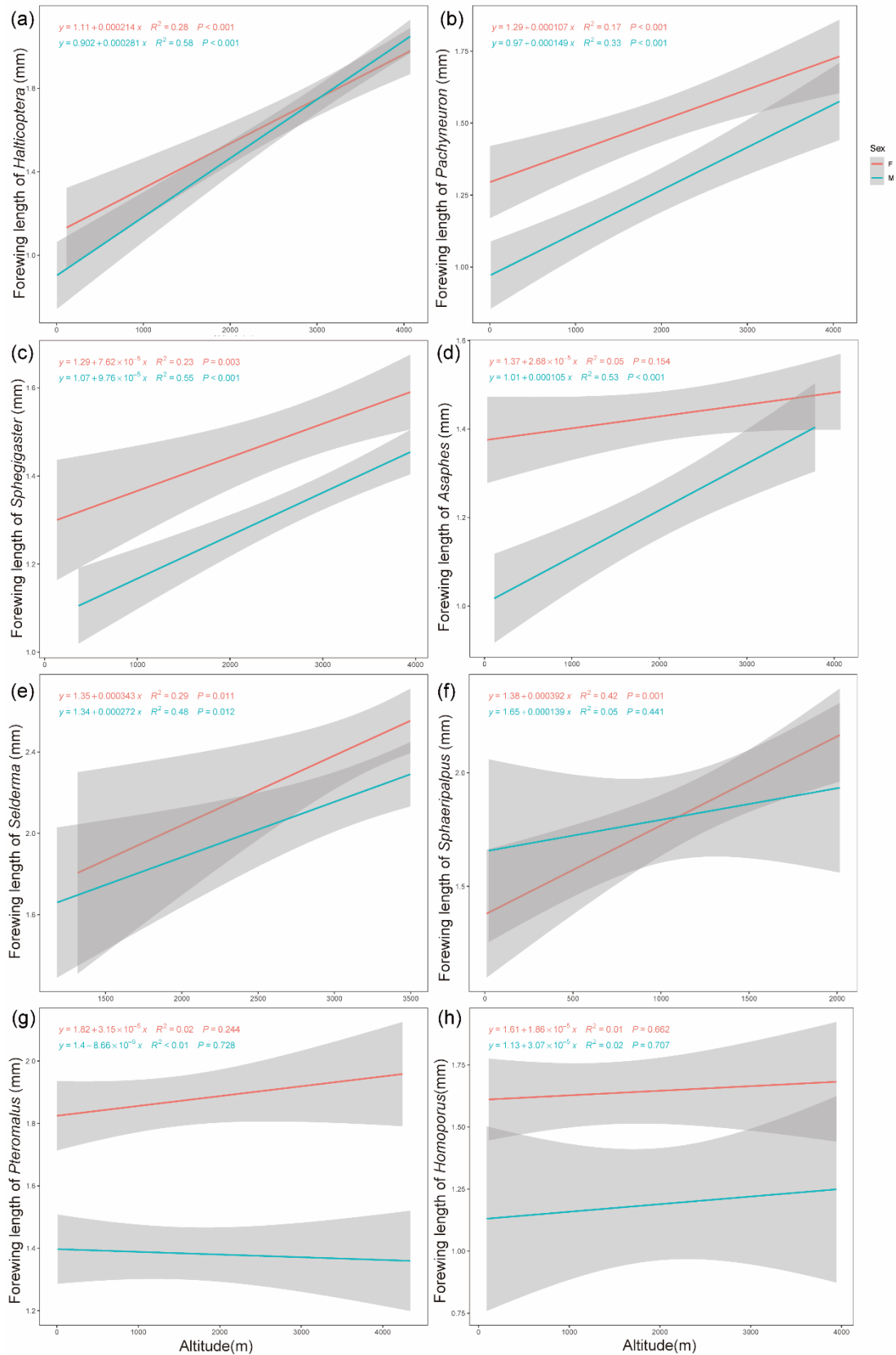


Figure S6 The relationship between forewing length and elevation in eight genera ($n \geq 30$ and with wide altitudinal range) of Eulophidae.

