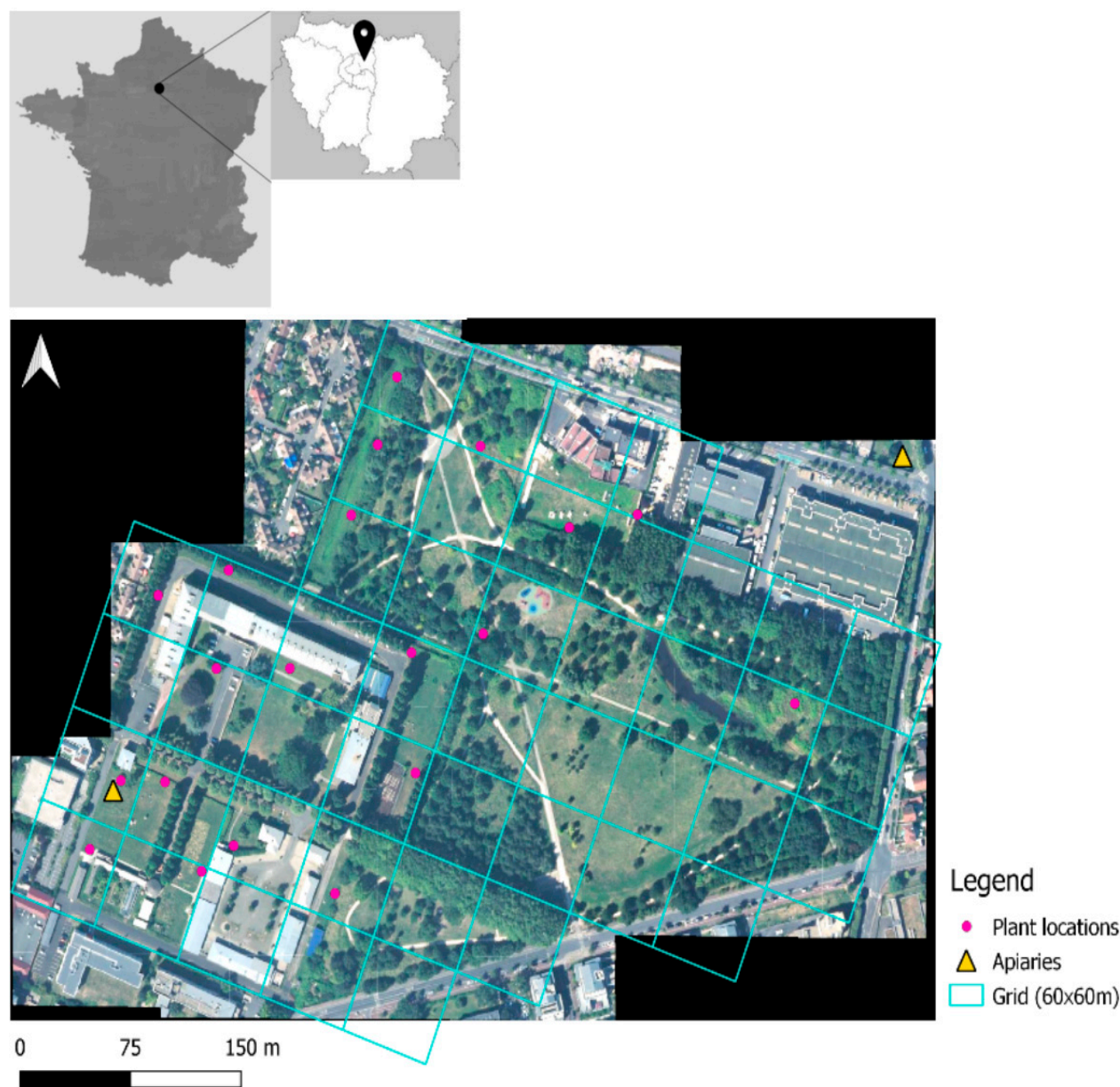


# Insect-mediated pollination of strawberries in an urban environment

Elsa Blareau, Pauline Sy, Karim Daoud, Fabrice Requier

## Supplementary Information

**Figure S1.** Location of the study area and study sites with apiary and plant locations.



**Figure S2.** (a) Strawberry plants after potting, (b) example of two strawberry plants at their designated location with pollinator exclusion bags around the open flowers, (c) a strawberry flower excluded from insect visits by means of a pollinator exclusion bag, (d) a Diptera visiting a strawberry flower.





**Figure S3.** Example of a strawberry from the experiment showing a malformation.

