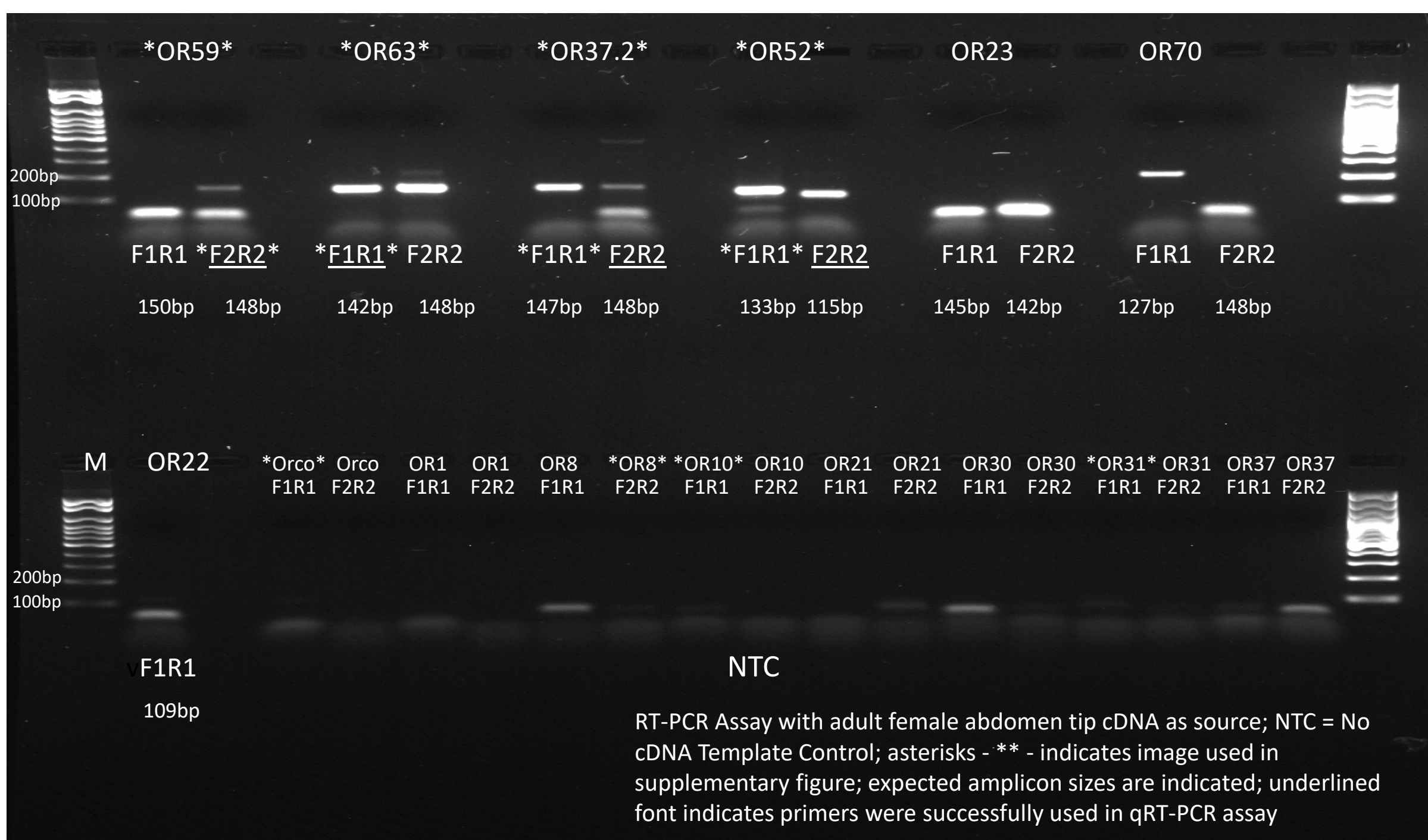
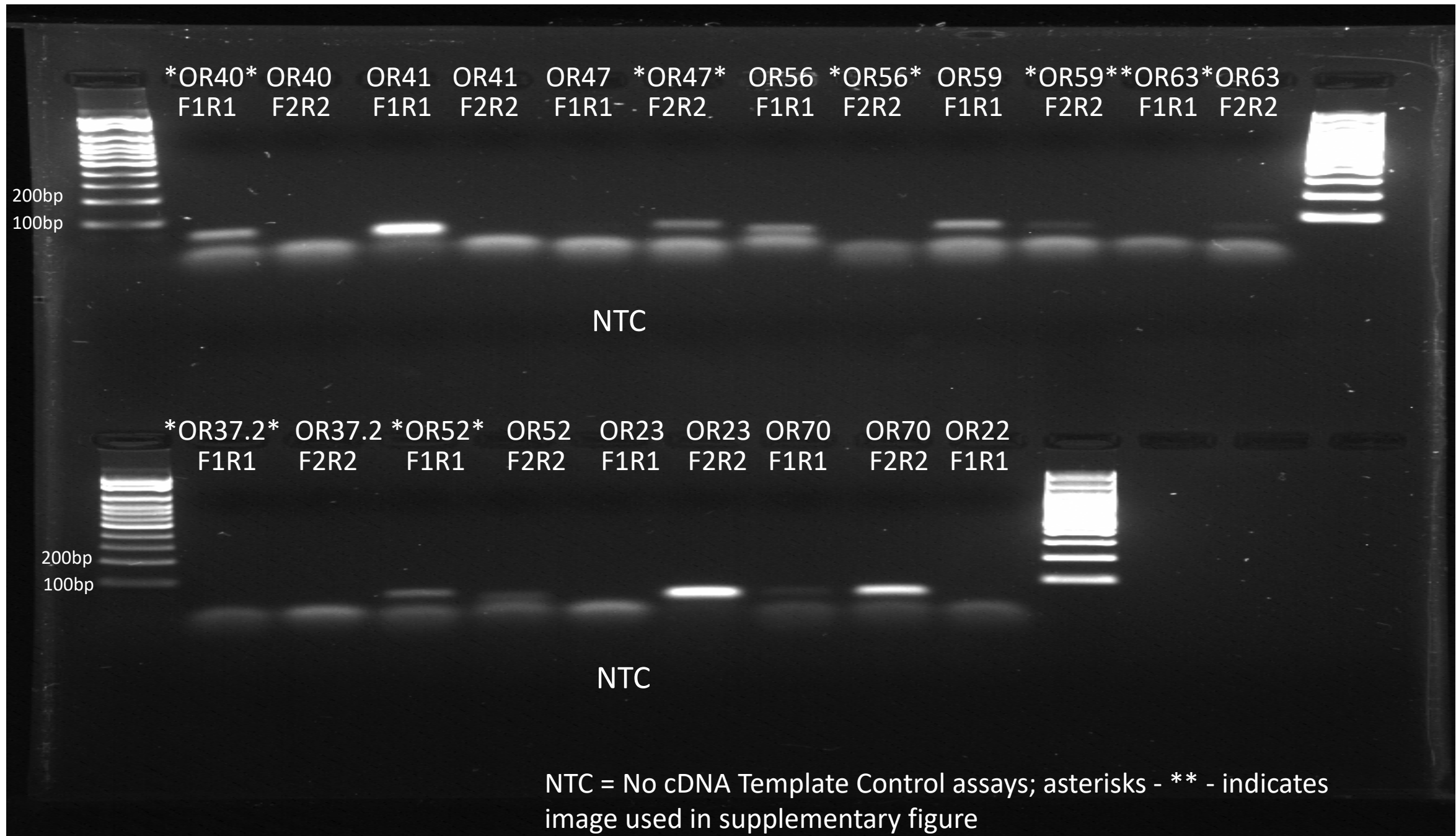
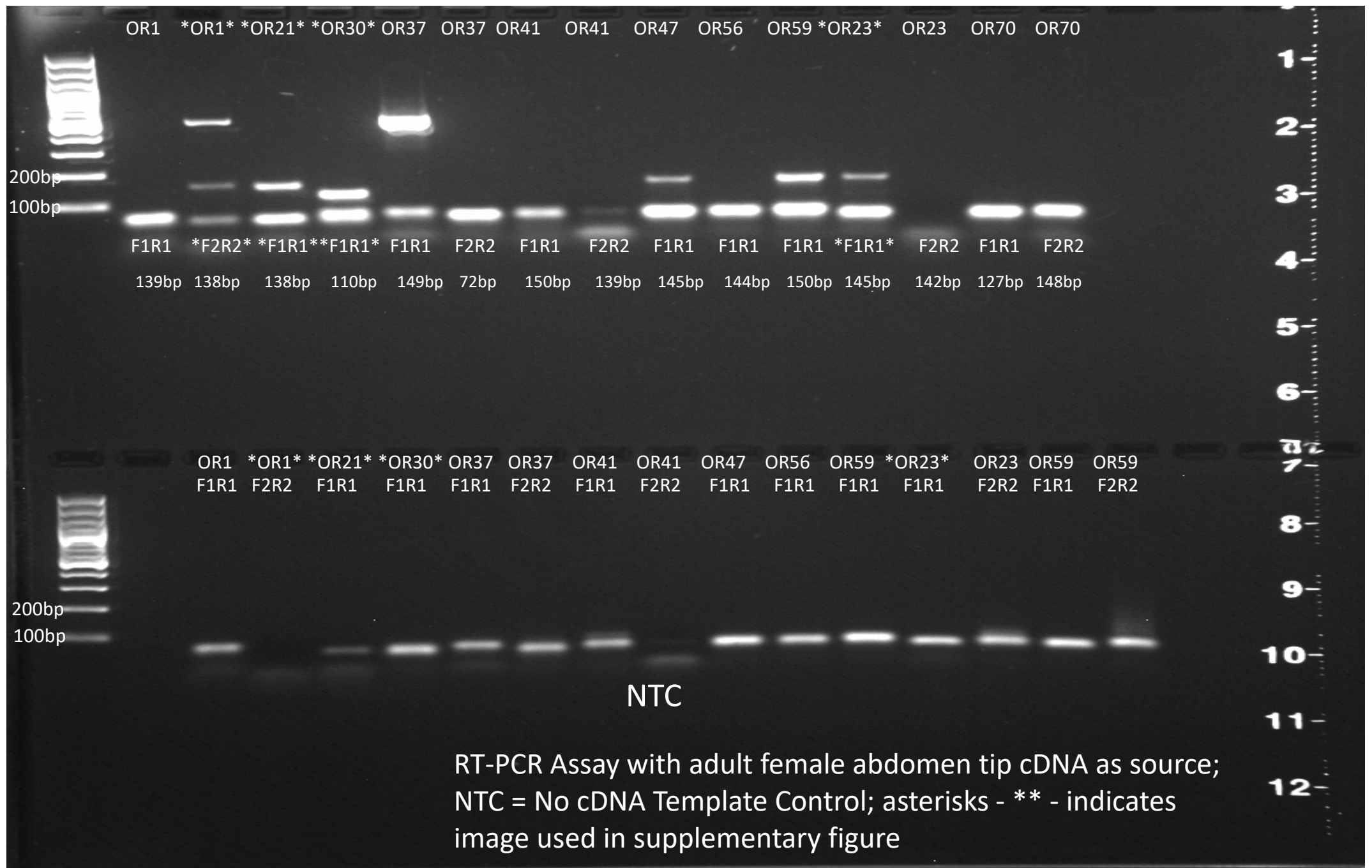




RT-PCR Assay with adult female abdomen tip cDNA as source; asterisks - \*\* - indicates image used in supplementary figure; expected amplicon sizes are indicated; underlined font indicates primers were successfully used in qRT-PCR assay



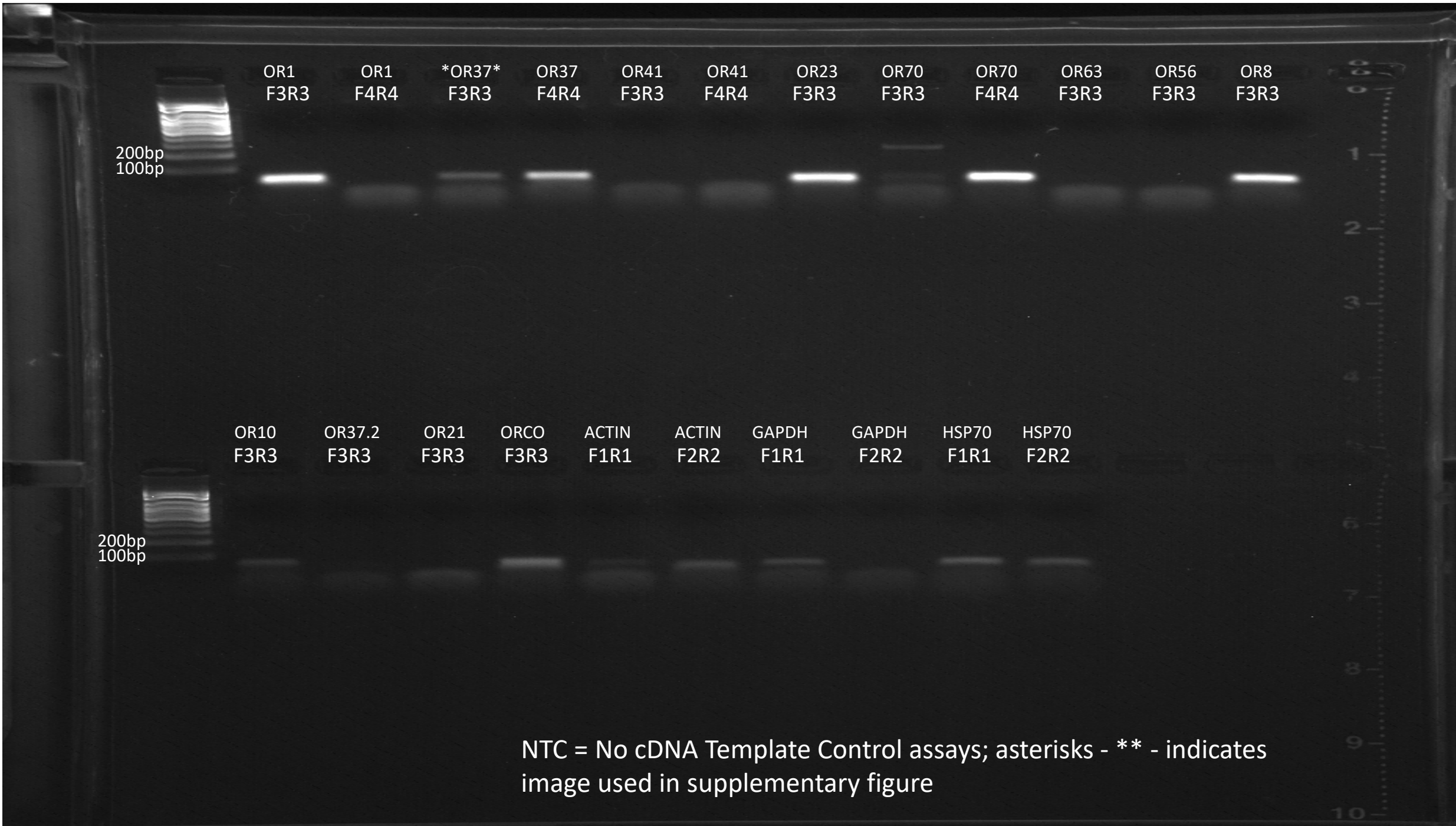








RT-PCR Assay with adult female abdomen tip cDNA as source;  
 asterisks - \*\* - indicates image used in supplementary figure;  
 underlined font indicates primers were successfully used in qRT-PCR  
 assay



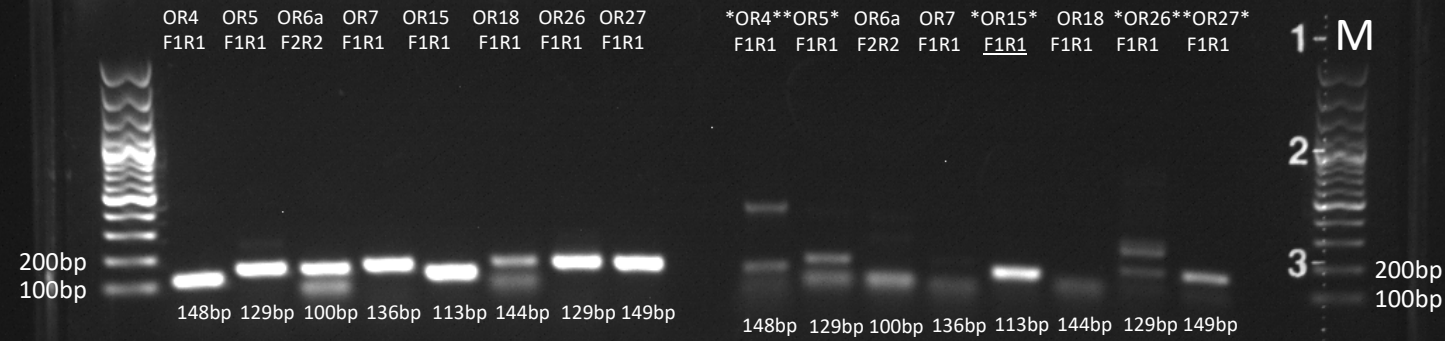


RT-PCR Assay with antennal (ANT) or adult female abdomen tip (AbTip) cDNA as source; NTC = No cDNA Template Control; asterisks - \*\* - indicates image used in supplementary figure; expected amplicon sizes are indicated

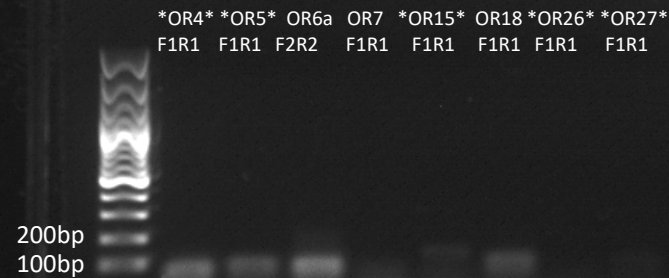


## Antennae

## Abdomen Tips



## NTC

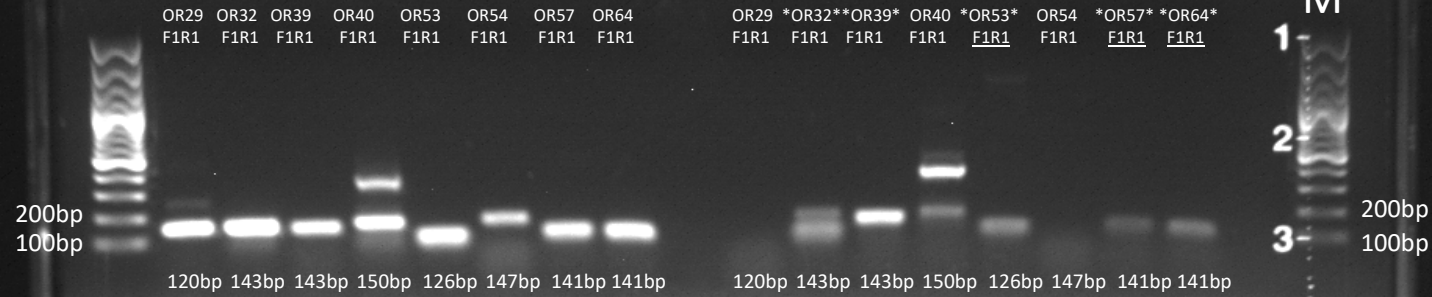


RT-PCR Assay with antennal or adult female abdomen tip cDNA as source;  
 NTC = No cDNA Template Control; asterisks - \*\* - indicates image used in  
 supplementary figure; expected amplicon sizes are indicated; underlined  
 font indicates primers were successfully used in qRT-PCR assay

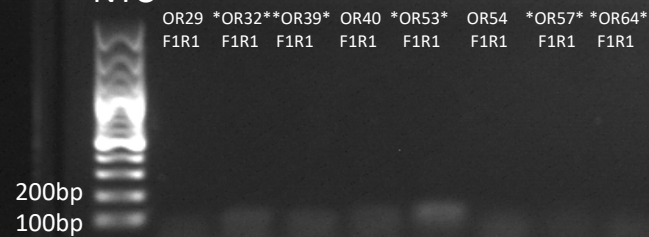


## Antennae

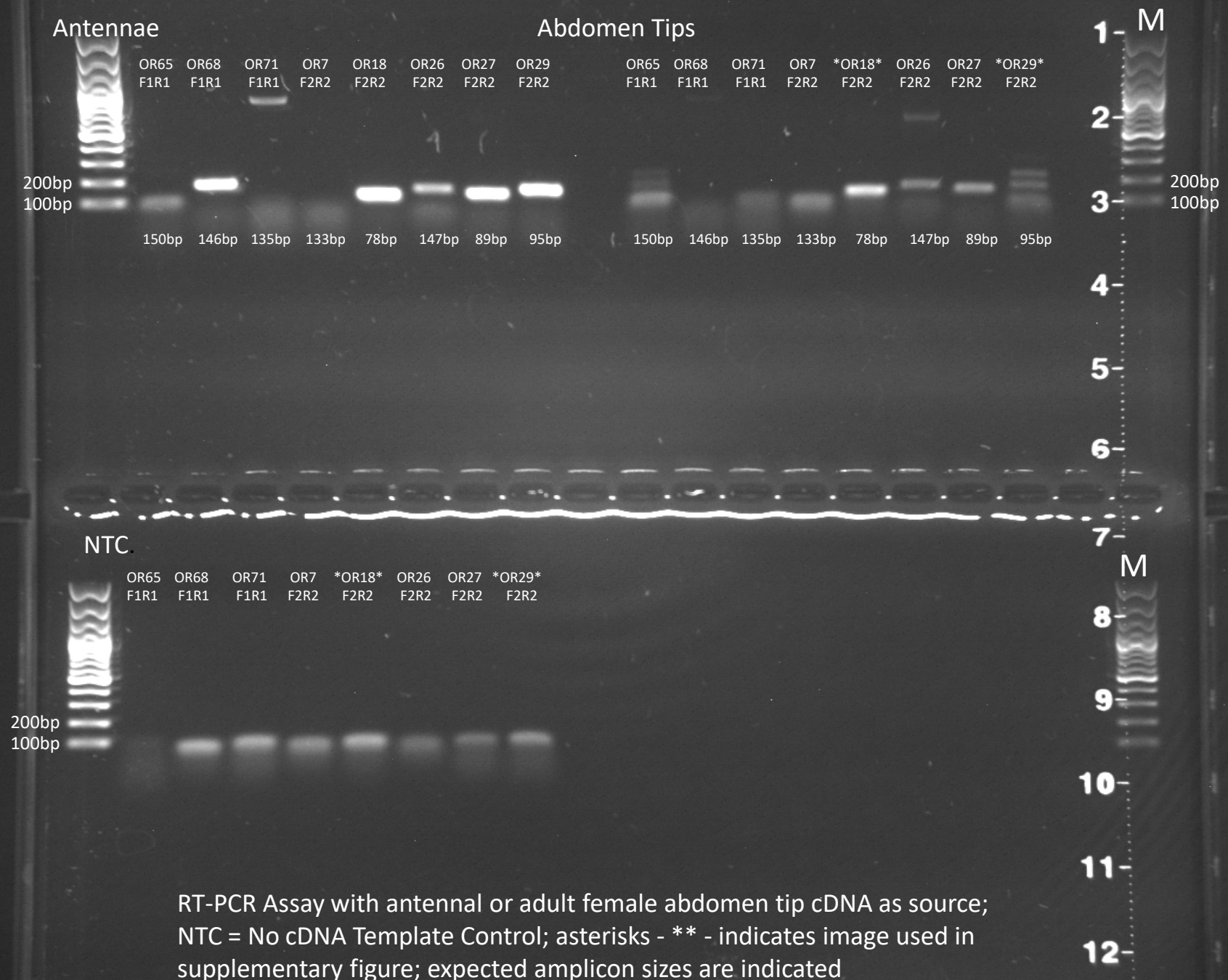
## Abdomen Tips



## NTC



RT-PCR Assay with antennal or adult female abdomen tip cDNA as source;  
 NTC = No cDNA Template Control; asterisks - \*\* - indicates image used in  
 supplementary figure; expected amplicon sizes are indicated; underlined  
 font indicates primers were successfully used in qRT-PCR assay



RT-PCR Assay with antennal or adult female abdomen tip cDNA as source;  
NTC = No cDNA Template Control; asterisks - \*\* - indicates image used in  
supplementary figure; expected amplicon sizes are indicated

## Antennae

OR40 OR54 OR65 OR70 OR69 OR69  
F2R2 F2R2 F2R2 F2R2 F1R1 F2R2

200bp  
100bp

124bp 137bp 84bp 127bp 145bp 133bp

## Abdomen Tips

\*OR40\* OR54 \*OR65\*\*OR70\* OR69 \*OR69\*  
F2R2 F2R2 F2R2 F2R2 F1R1 F2R2

124bp 137bp 84bp 127bp 145bp 133bp

## NTC

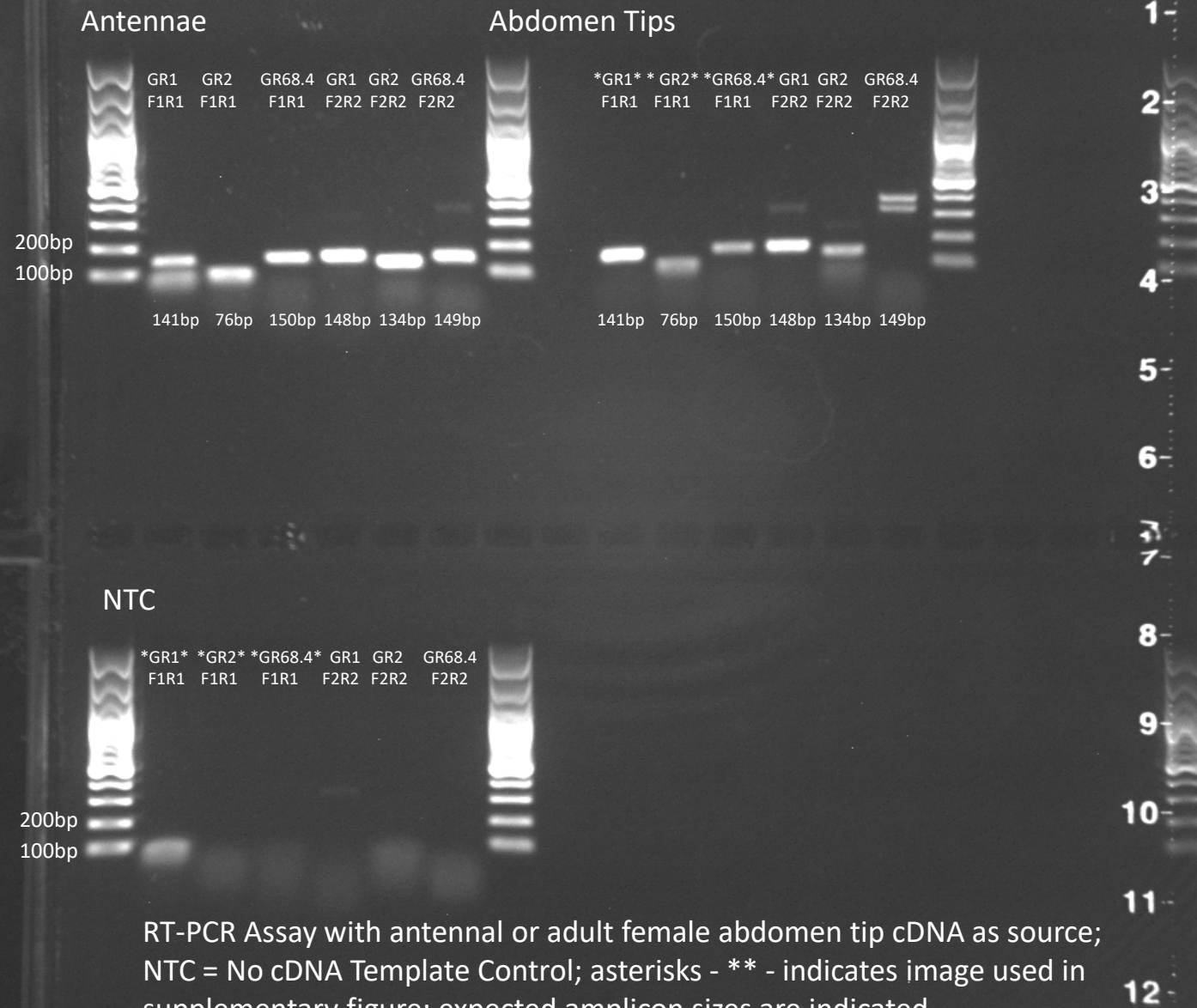
OR40 OR54 OR65 OR70 OR69 OR69  
F2R2 F2R2 F2R2 F2R2 F1R1 F2R2

200bp  
100bp

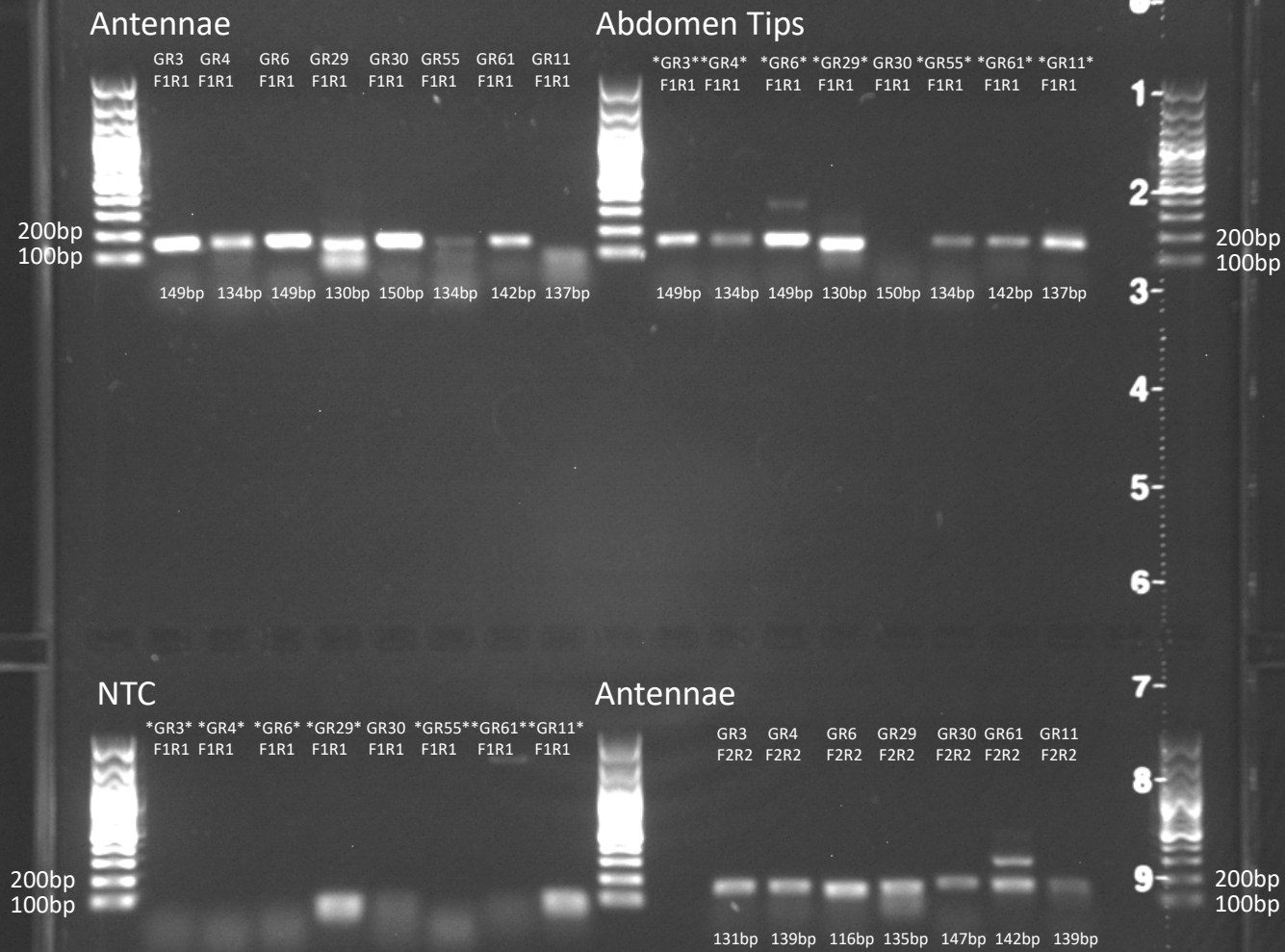
RT-PCR Assay with antennal or adult female abdomen tip cDNA as source;  
NTC = No cDNA Template Control; asterisks - \*\* - indicates image used in  
supplementary figure; expected amplicon sizes are indicated; underlined  
font indicates primers were successfully used in qRT-PCR assay

1  
2  
3  
4  
5  
6  
7  
8  
9  
10  
11  
12



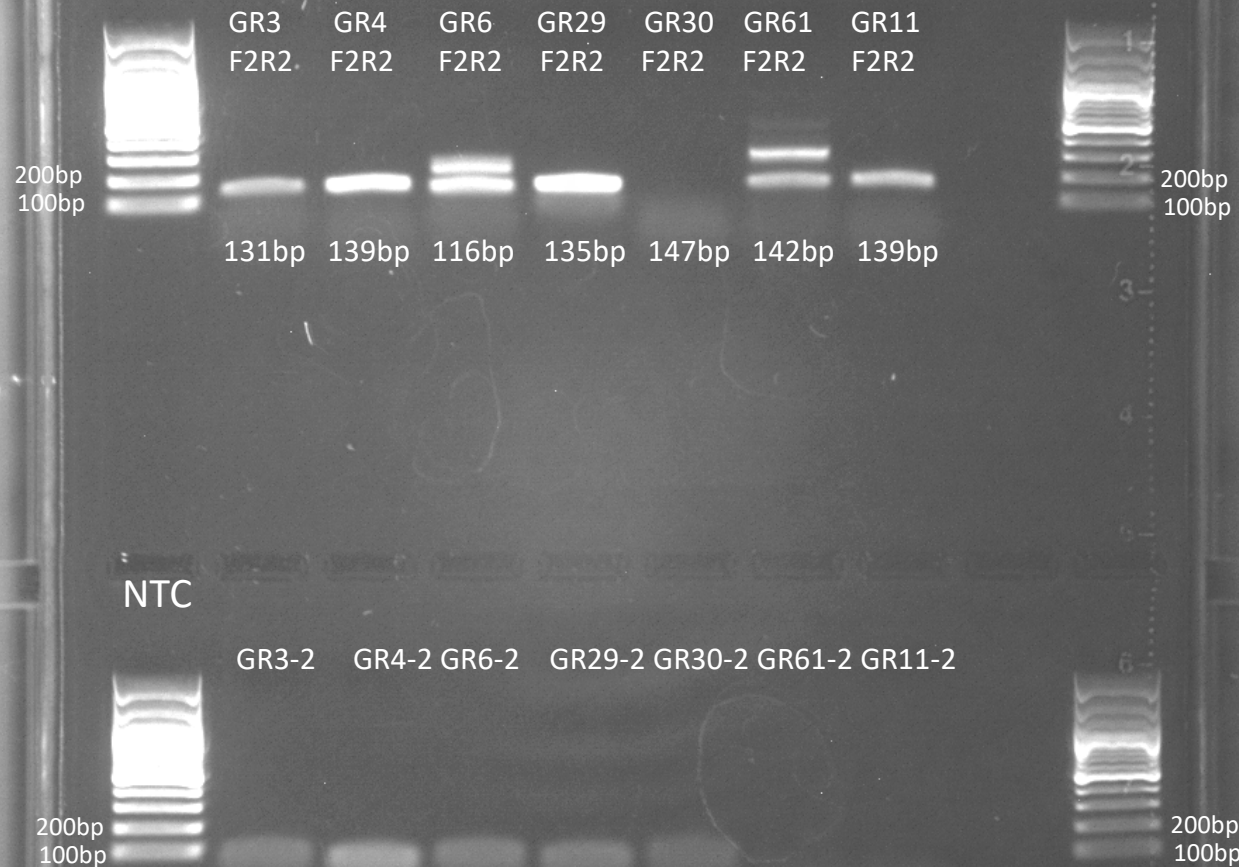






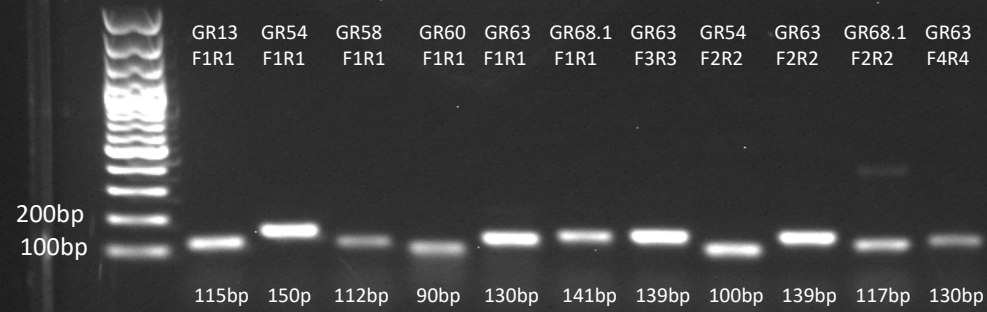
RT-PCR Assay with antennal or adult female abdomen tip cDNA as source; NTC = No cDNA Template Control; asterisks - \*\* - indicates image used in supplementary figure; expected amplicon sizes are indicated

# Abdomen Tips

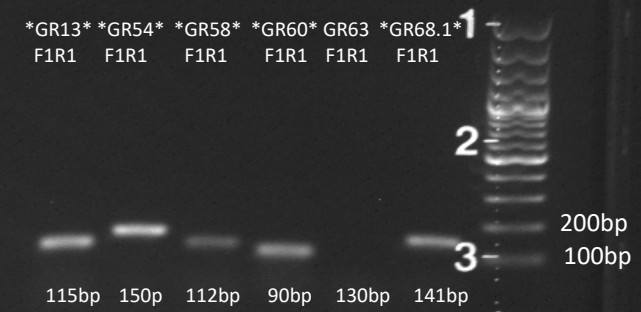


RT-PCR Assay with antennal or adult female abdomen tip cDNA as source; NTC = No cDNA Template Control; asterisks - \*\* - indicates image used in supplementary figure; expected amplicon sizes are indicated

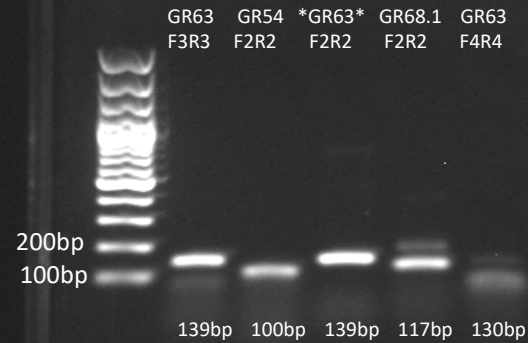
## Antennae



## Abdomen Tips



## Abdomen Tips



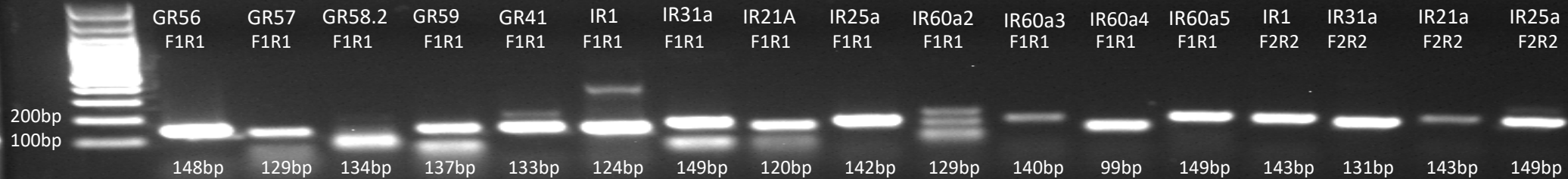
## NTC



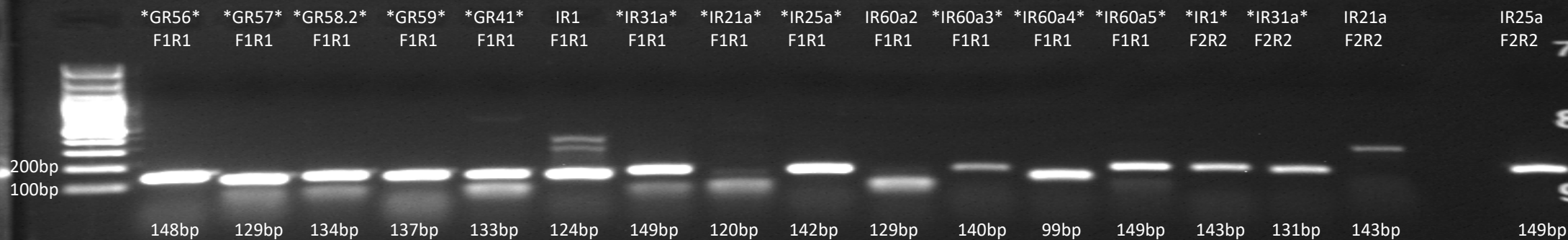
RT-PCR Assay with antennal or adult female abdomen tip cDNA as source;  
 NTC = No cDNA Template Control; asterisks - \*\* - indicates image used in  
 supplementary figure; expected amplicon sizes are indicated



## Antennae

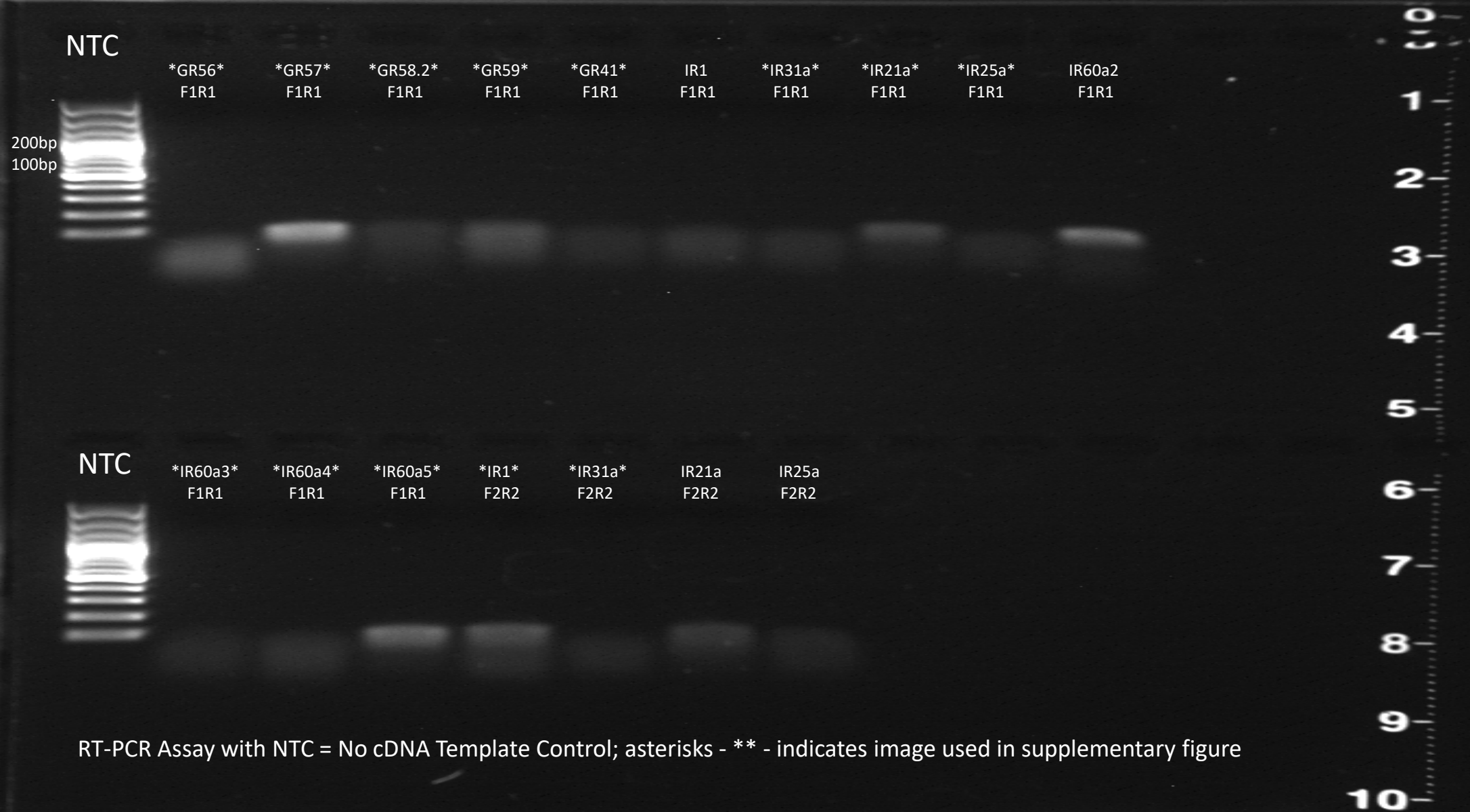


## Abdomen Tips



RT-PCR Assay with antennal or adult female abdomen tip cDNA as source; asterisks - \*\* - indicates image used in supplementary figure; expected amplicon sizes are indicated





RT-PCR Assay with NTC = No cDNA Template Control; asterisks - \*\* - indicates image used in supplementary figure

