

Supplementary Materials

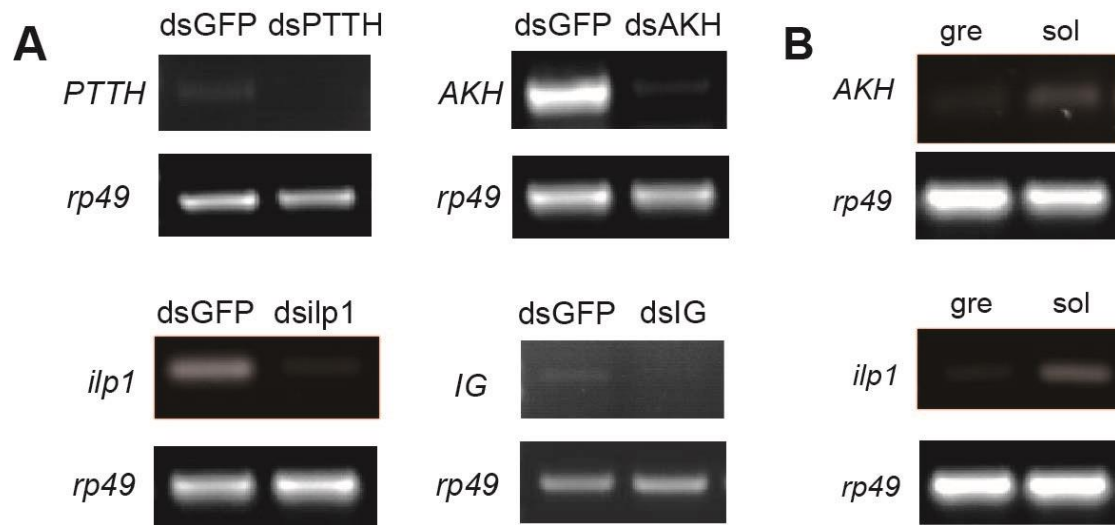


Figure S1. RNAi efficiency confirmation. A. Semi-quantitative RT-PCR showed that RNAi specifically down-regulated the expression level of *PTTH*, *AKH*, *ilp1* and *IG*. B. Semi-quantitative RT-PCR showed relative quantification of *AKH* and *ilp1* transcripts between gregarious and solitary brains.

Table S1. The primers for RT-PCR and RT-qPCR.

Gene ID	Forward Primer (5' to 3')	Reverse Primer (5' to 3')
<i>PTTH</i>	AGTACAACGCCGAGAAGCT	AAGCAGTGTGGTCATCTGTG
<i>AKH</i> (LOCMI17565)	CGACTTCGCAGACCCCTA	TTGGAACACCCAGACATCTTC
<i>ilp1</i> (LOCMI16379)	GCGAGAAGCTCTCCAACG	GCTCCAGTAGTTGTCTTCAG
<i>IG</i> (LOCMI13143)	CATTCGCCGATCATCTGGAA	AGGGAGTGAGCAGCAGAAAT

Table S2. The primers for dsRNA preparation.

Gene ID	Forward Primer (5' to 3')	Reverse Primer (5' to 3')
<i>PTTH</i>	AGCACGTCCATGACGCACT	GCAGCTTCTCGGCGTTGTAC
<i>AKH</i> (LOCMI17565)	ATGGTGCAGCGTTGCGCCCTGG TGG	GTTGGAACACCCAGACATCTT CCTG
<i>ilp1</i> (LOCMI16379)	CCGACCTGTTCTCCTGTC	GGCAGCACTCGTCGAAGA
<i>IG</i> (LOCMI13143)	CATTCGCCGATCATCTGGAA	AGGGAGTGAGCAGCAGAAAT

Note: The T7 promoter (GGATCCTAATACGACTCACTATAGG) is located at the 5' end of the primer sequence.