

## Supplementary Materials

### Pheromone-based mating disruption of *Conogethes punctiferalis* (Lepidoptera: Crambidae) in chestnut orchards

Junheon Kim<sup>1,\*</sup>, Seongchae Jung<sup>2,\*</sup>, Young Un Kim<sup>2</sup>

<sup>1</sup>Forest Entomology and Pathology Division, National Institute of Forest Science, Seoul, 02455, Republic of Korea

<sup>2</sup>AD Corporation, Andong 36729, Republic of Korea

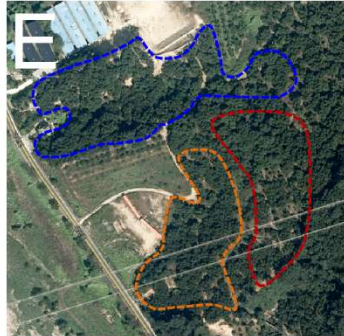
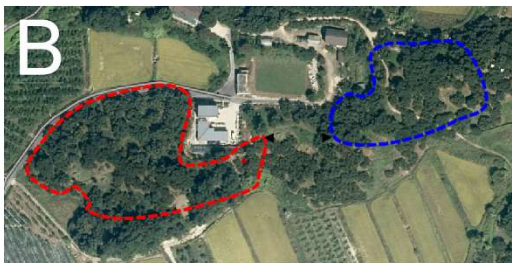
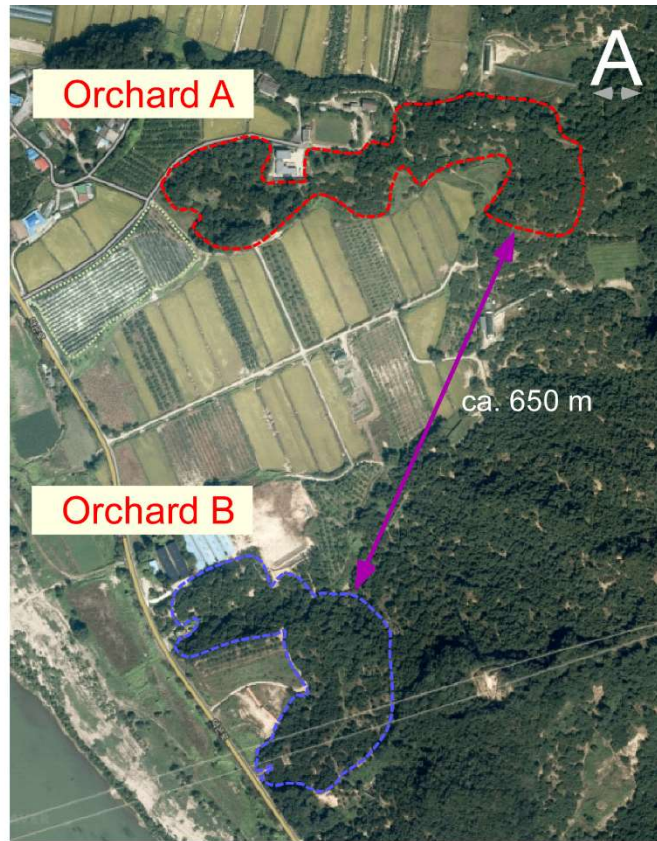


Figure S1. The location of Orchard A and Orchard B (A) and the area of treatment in Orchard A and B; B: Orchard A in 2022, C: Orchard B in 2022, D: Orchard A in 2023, E: Orchard B in 2023. B, C: Red line indicating the single-dose treatment (TS, 50 g/ha) area. Blue line

indicating the control area. D, E: Orange line indicating the two-application treatment (TT, 50 g/ha in June and August) area, purple line indicating the double-dose treatment (TD, 100 g/ha) area, and blue line indicating the control area.

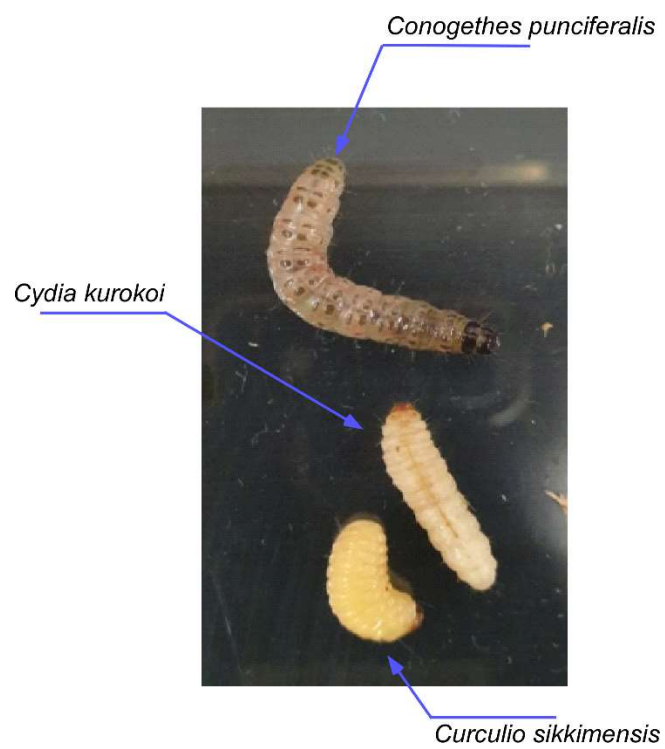


Figure S2. The larvae in the damaged chestnut fruit.