

Figure S1

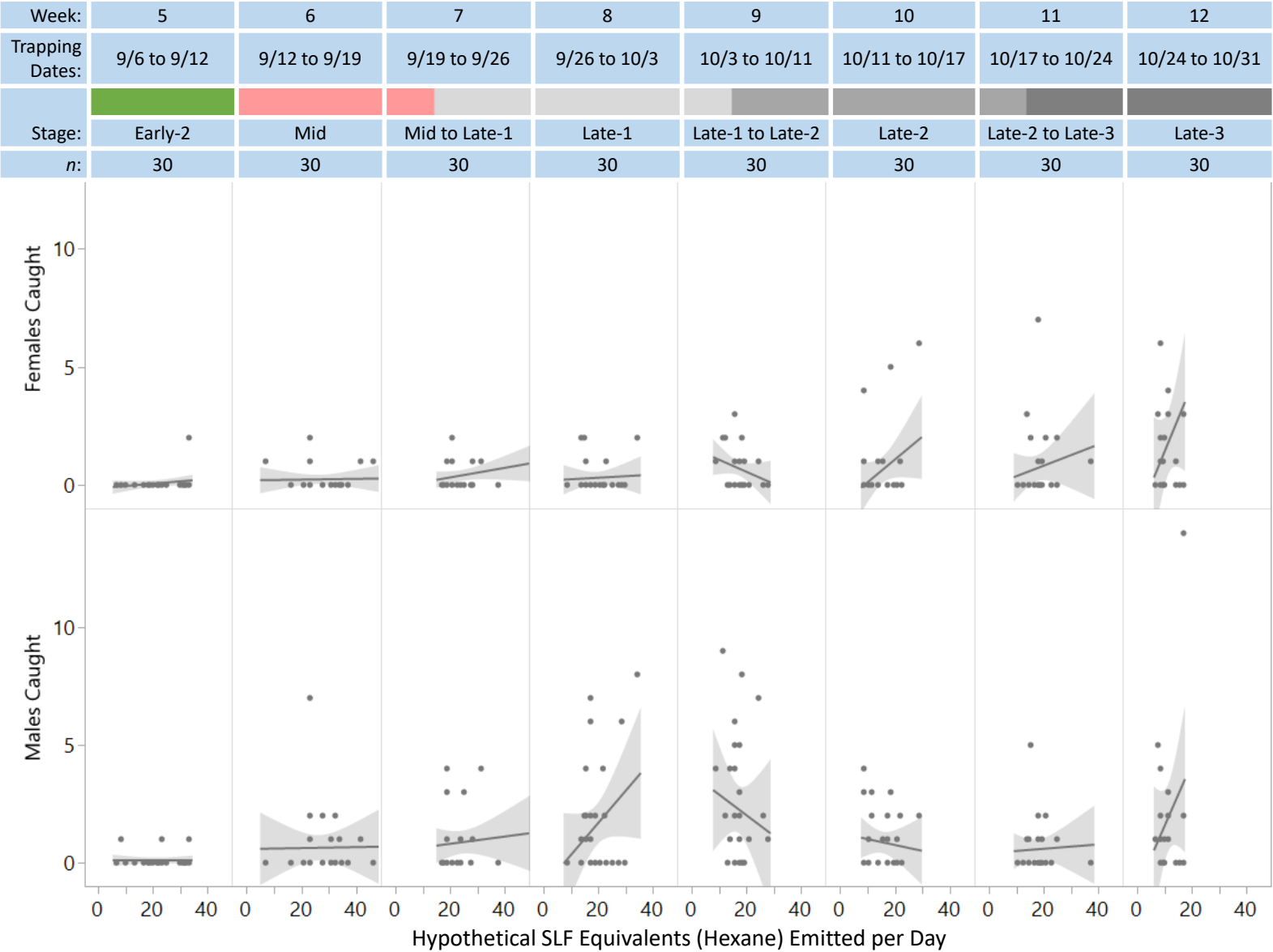


Figure S1. Number of females and males (y-axes) caught from week 5 onward per trap and trapping period with respect to the number of hypothetical SLF equivalents emitted per day (x-axis) from control hexane lures, in the absence of honeydew. Linear regression lines and 95% confidence intervals (shaded regions) are shown. No significance was found.

Figure S2

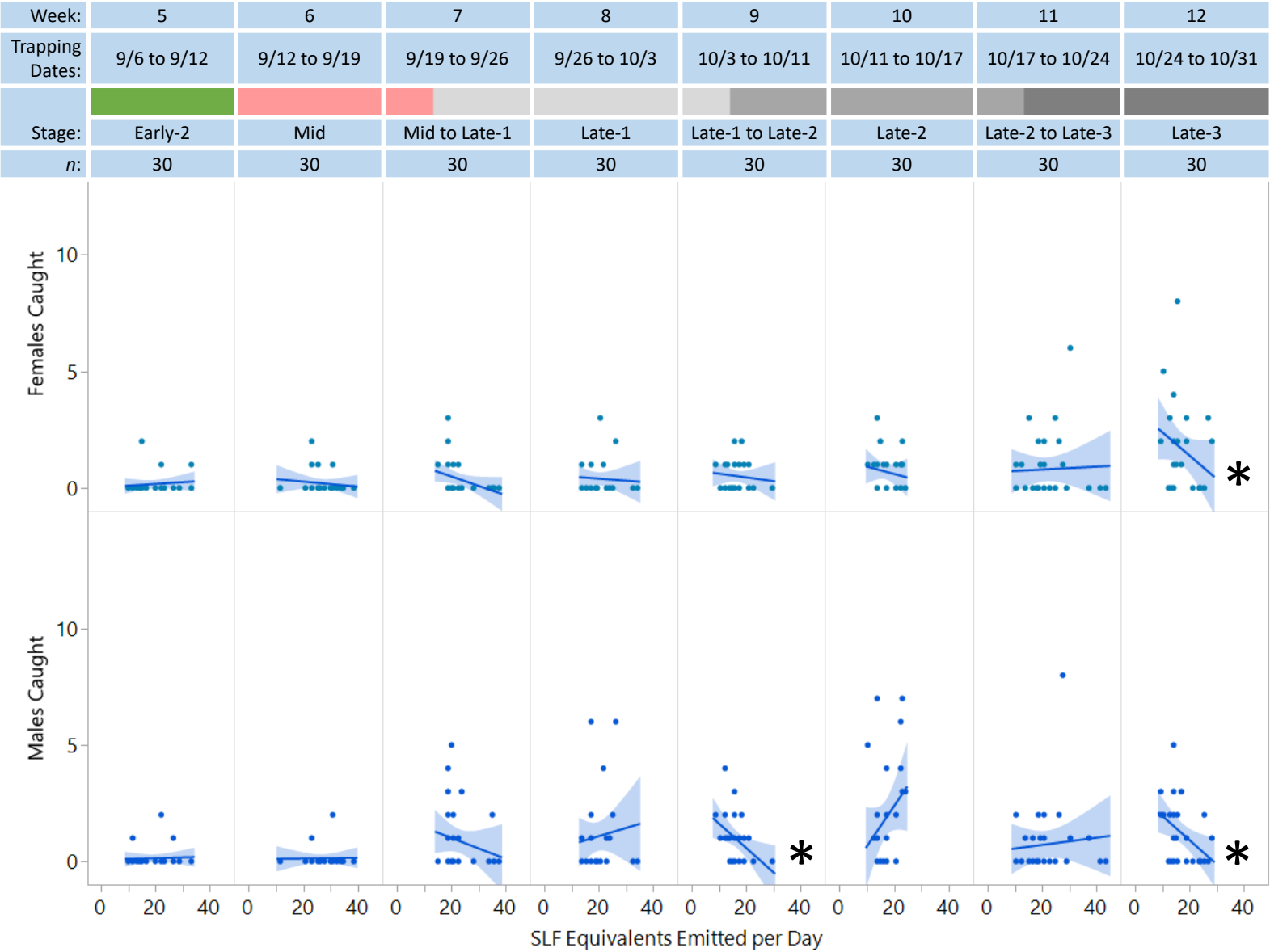


Figure S2. Number of females and males (y-axes) caught from week 5 onward per trap and trapping period with respect to the number of SLF equivalents emitted per day (x-axis) from extract lures in the absence of honeydew. Linear regression lines and 95% confidence intervals (shaded regions) are shown, with asterisks indicating significant negative dose-responses ($P < 0.05$).