

Figure S1. Structure of the stridulatory apparatus of *D. adjunctus* female. **(a and b)** left elytra, **(c)** absence of plectrum, and **(d)** pars stridens in the last sternite.

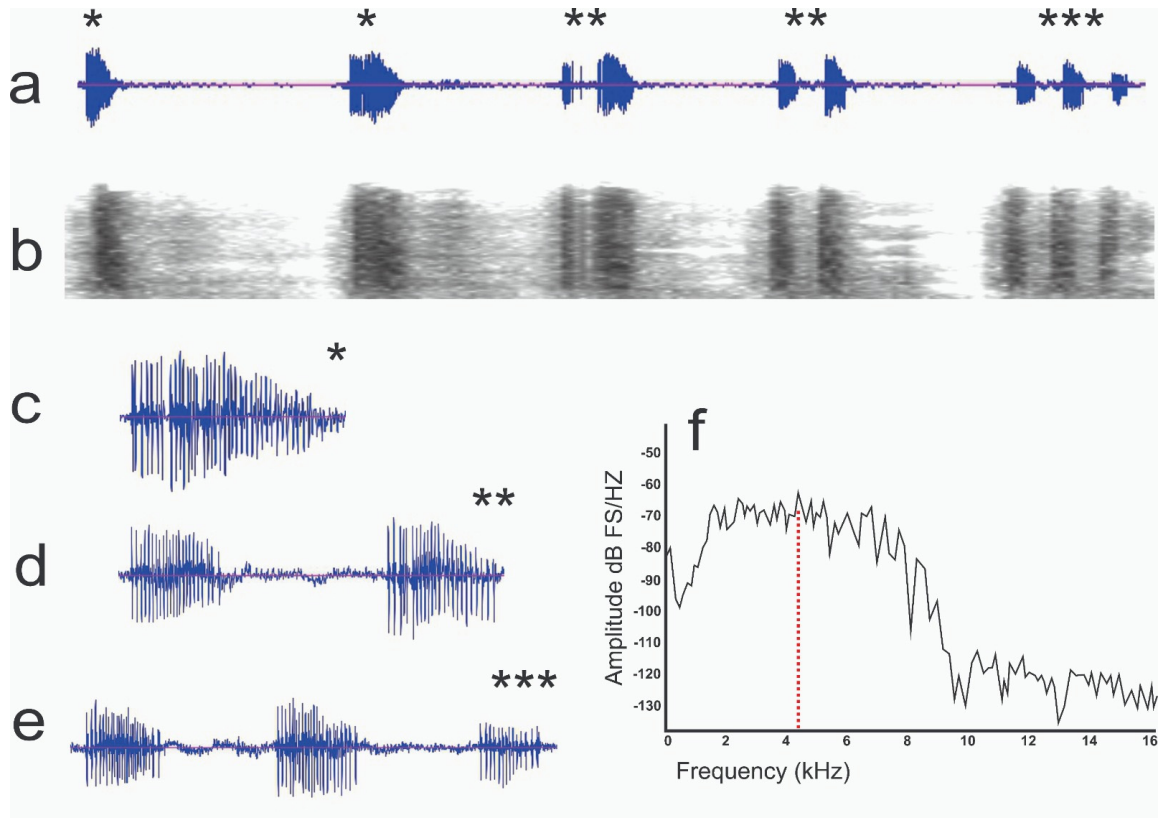


Figure S2. Wave diagram and spectrogram of the male of *Dendroctonus approximatus* in stress condition. (a) Wave diagram, single-noted call (*), multiple-noted call (two note ** and three note ***), and (b) spectrogram of the stress condition, amplification of a (c) single-noted call and multiple-noted call of (d) two note and (e) three note, and (f) single-noted call relative power diagram.