

Supplementary Materials: Relationships between Isometric Force-Time Characteristics and Dynamic Performance

Thomas Dos'Santos *, Christopher Thomas, Paul Comfort, John J. McMahon and Paul A. Jones

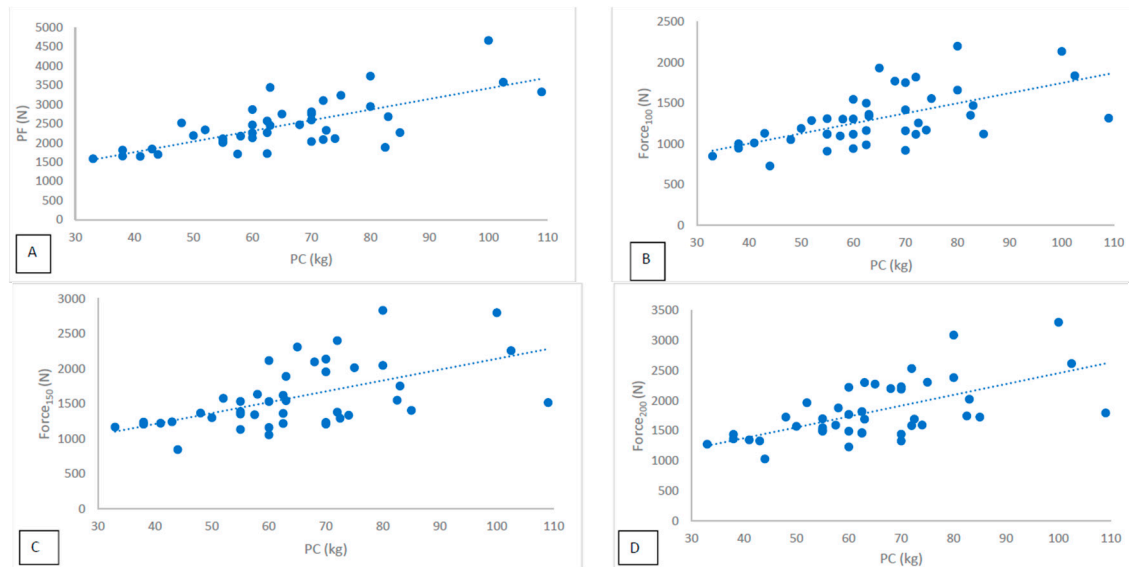


Figure S1. Spearman's correlation between (A) PC and PF; (B) PC and Force₁₀₀; (C) PC and Force₁₅₀; (D) PC and Force₂₀₀.

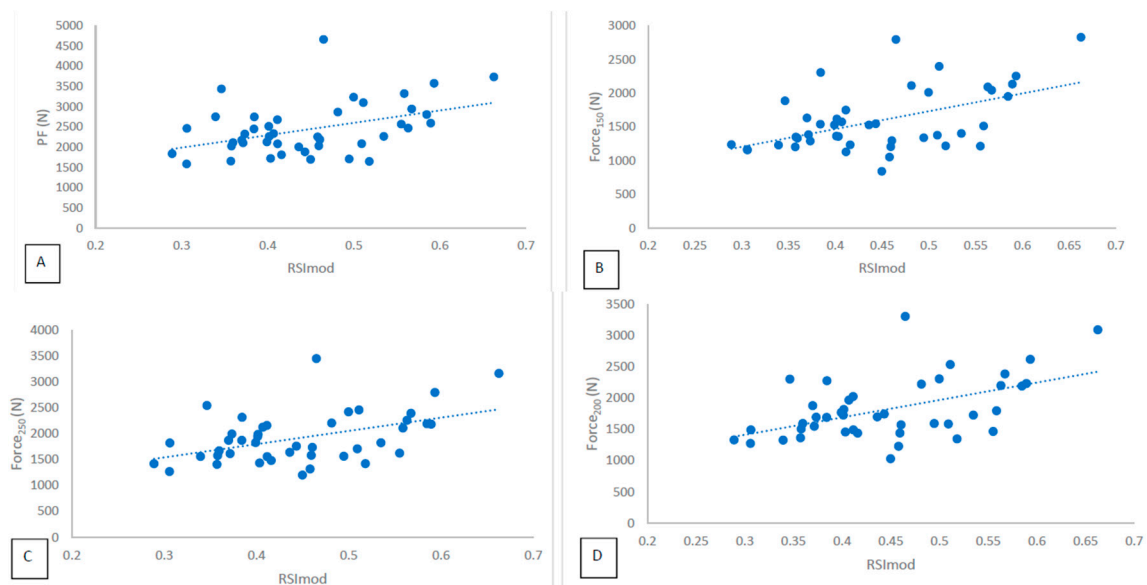


Figure S2. Spearman's correlation between (A) RSImod and PF; (B) RSImod and Force₁₅₀; (C) RSImod and Force₂₅₀; (D) RSImod and Force₂₀₀.

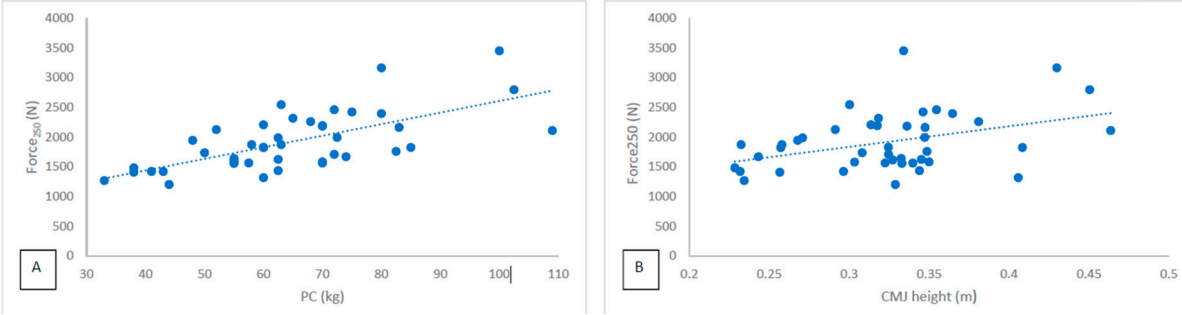


Figure S3. Spearman’s correlation between (A) PC and Force₂₅₀; (B) CMJ height and Force₂₅₀.