

## Article

# Mixed oxide electrodes based on ruthenium and copper: electrochemical properties as a function of the composition and method of manufacture—Supplementary Materials

Elisabetta Petrucci<sup>1</sup>, Francesco Porcelli<sup>2</sup>, Monica Orsini<sup>2</sup>, Serena De Santis<sup>2</sup> and Giovanni Sotgiu<sup>2,\*</sup>

<sup>1</sup> Department of Chemical Engineering Materials Environment; elisabetta.petrucci@uniroma1.it

<sup>2</sup> Department of Industrial, Electronic and Mechanical Engineering; francesco.porcelli@uniroma3.it; monica.orsini@uniroma3.it; serena.desantis@uniroma3.it; giovanni.sotgiu@uniroma3.it

\* Correspondence: giovanni.sotgiu@uniroma3.it

**Citation:** Petrucci, E.; Porcelli, F.; Orsini, M.; De Santis, S.; Sotgiu, G. Mixed Oxide Electrodes Based on Ruthenium and Copper: Electrochemical Properties as a Function of the Composition and Method of Manufacture. *Metals* **2022**, *12*, 316. <https://doi.org/10.3390/met12020316>

Academic Editor: Rastko Vasilic

Received: 31 December 2021

Accepted: 8 February 2022

Published: 11 February 2022

**Publisher's Note:** MDPI stays neutral with regard to jurisdictional claims in published maps and institutional affiliations.



**Copyright:** © 2022 by the authors. Licensee MDPI, Basel, Switzerland. This article is an open access article distributed under the terms and conditions of the Creative Commons Attribution (CC BY) license (<https://creativecommons.org/licenses/by/4.0/>).

## 1. EDS analysis

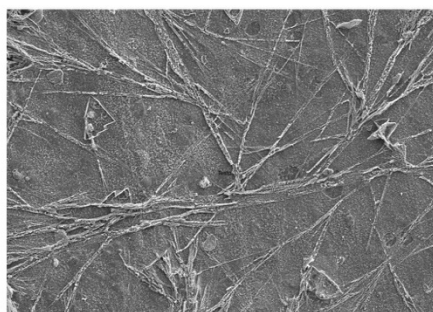
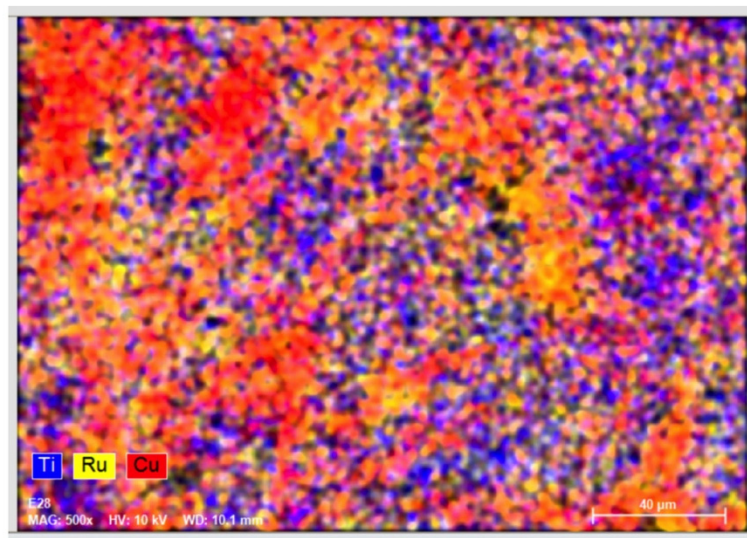
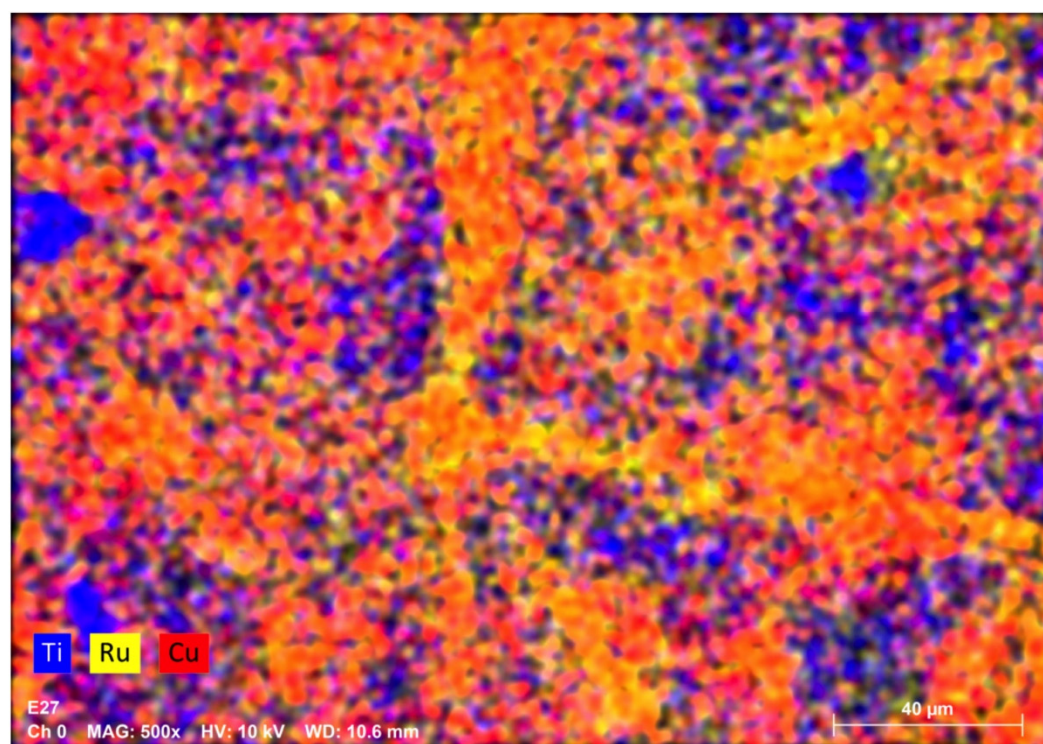


Figure S1: EDS map for Electrode E1



HV [kV]	Mag	WD [mm]
10.0 keV	500x	10.6 mm



HV [kV]	Mag	WD [mm]
10.0 keV	500x	10.6 mm

Figure S2: EDS map for Electrode E2

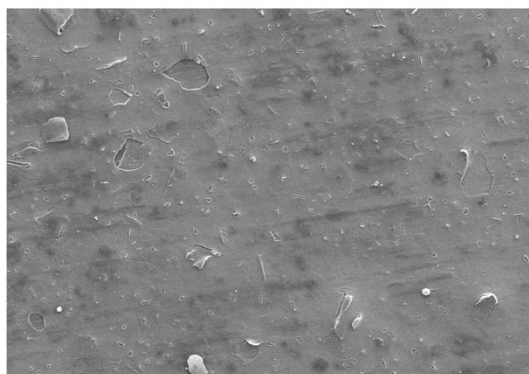
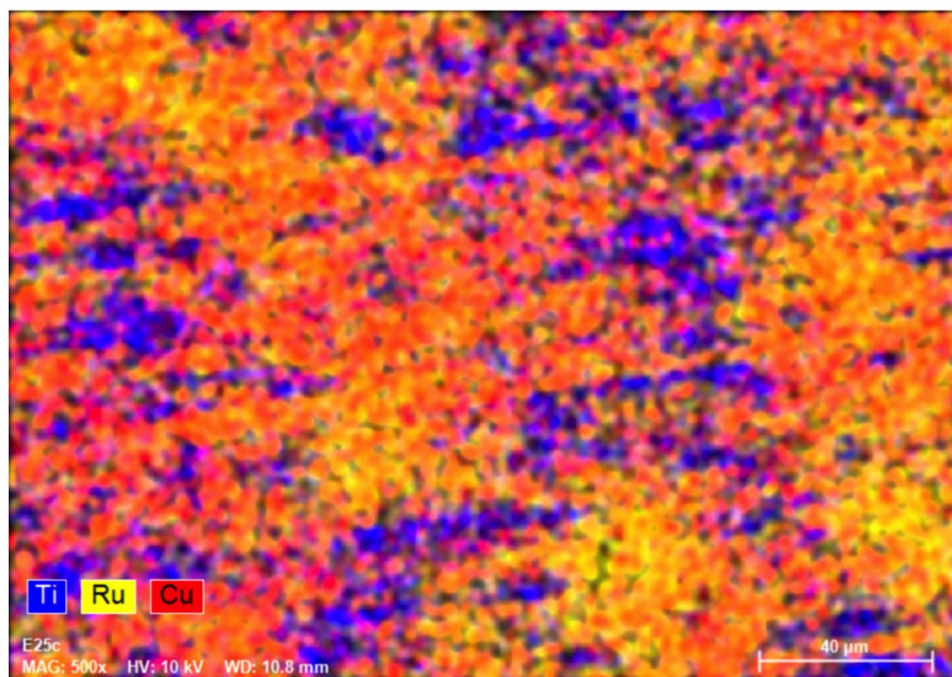
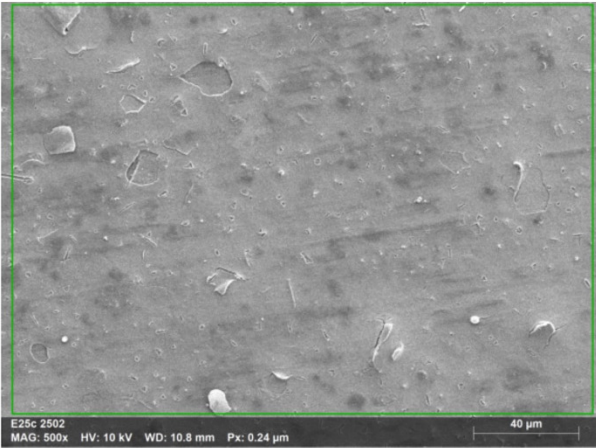
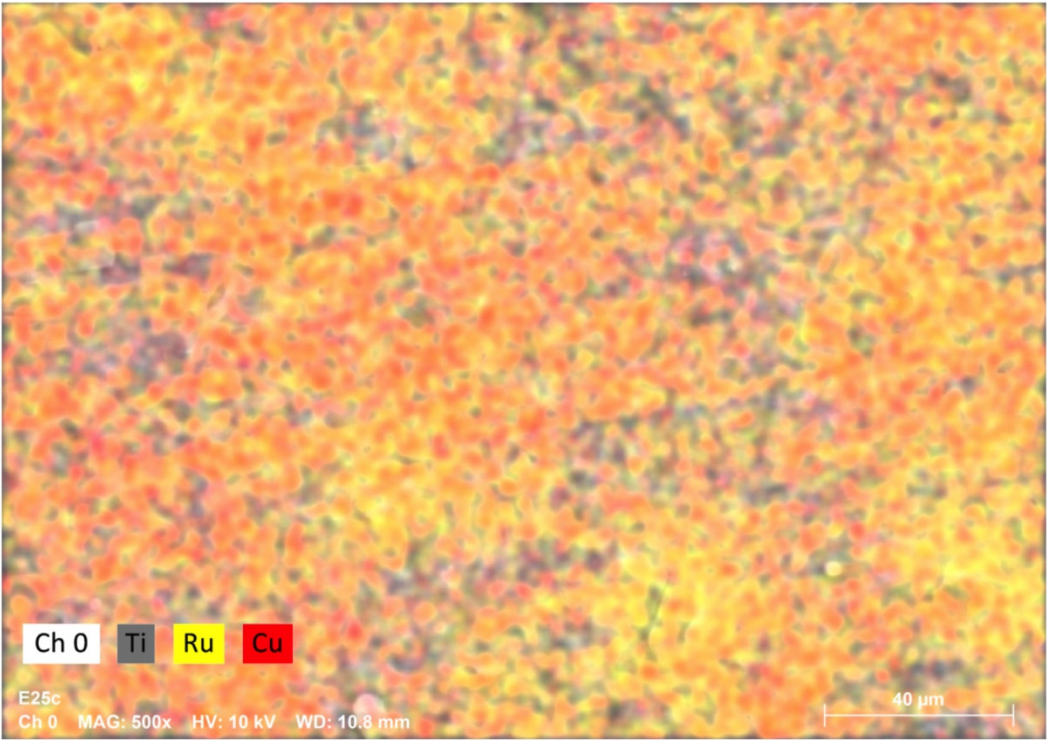


Figure S3: EDS map for Electrode E3



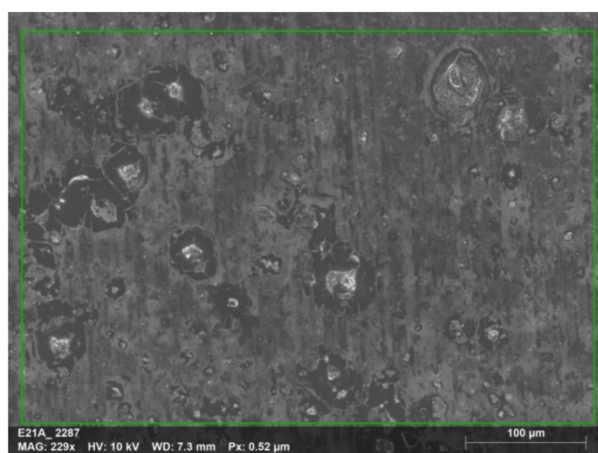


HV	Mag	WD
[kV]		[mm]
10.0 keV	500x	10.8 mm

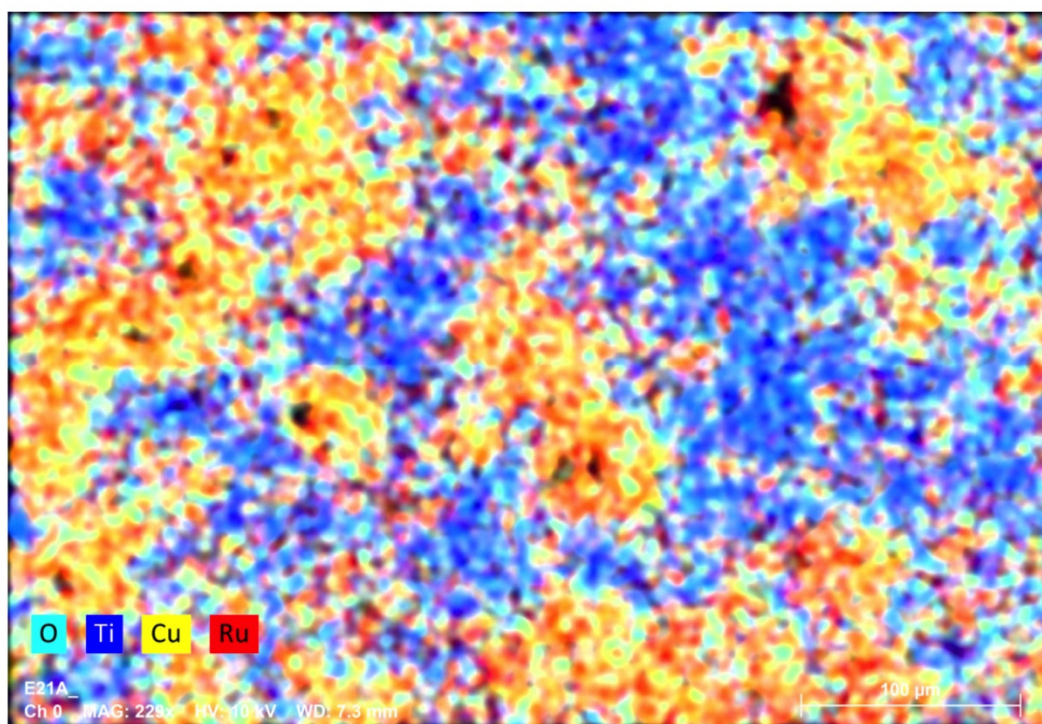


HV	Mag	WD
[kV]		[mm]
10.0 keV	500x	10.8 mm

Figure S4: EDS map for Electrode E4



HV [kV]	Mag	WD [mm]
10.0 keV	229x	7.3 mm



HV [kV]	Mag	WD [mm]
10.0 keV	229x	7.3 mm

Figure S5: EDS map for Electrode E5

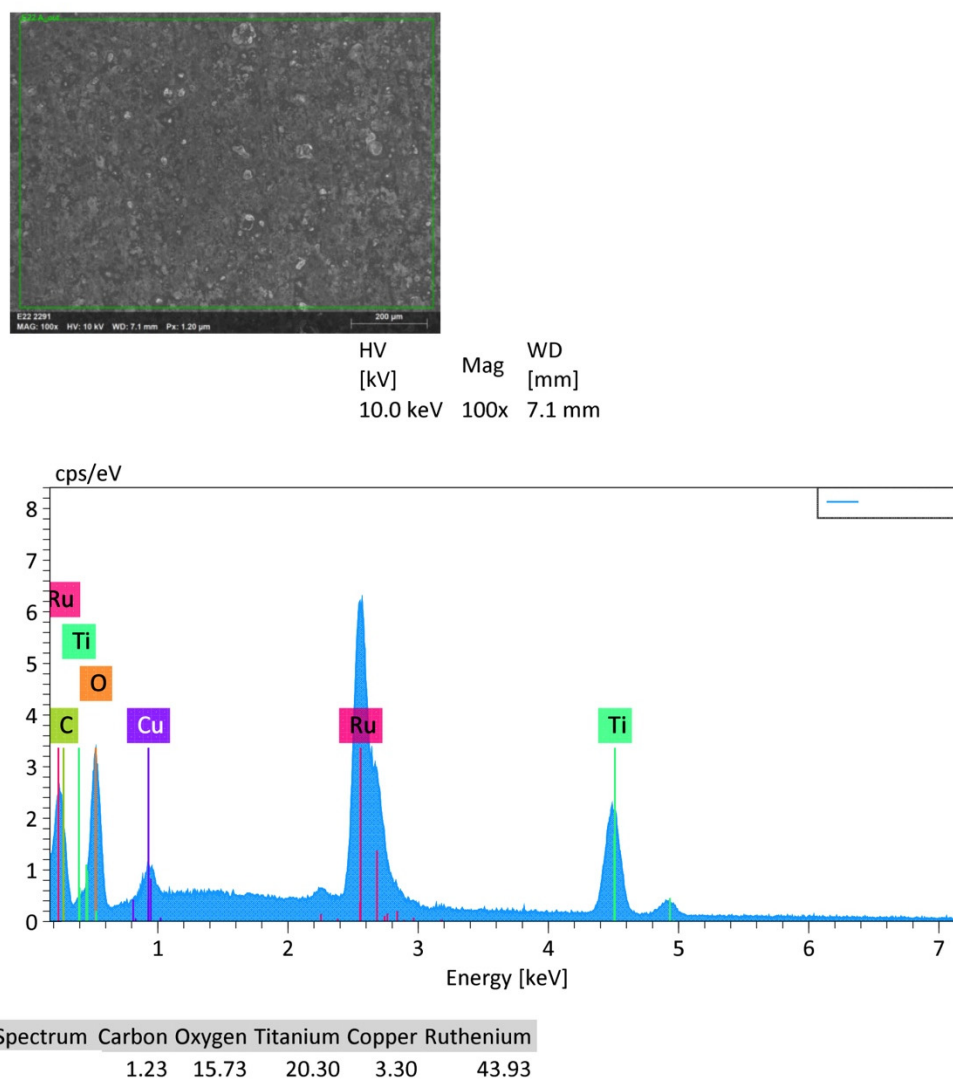


Figure S6: EDS diagram for Electrode E6

## 2. Behavior of electrodes E0, E1, E2 and E3 in repeated voltammetric scans

Solution:  $\text{H}_2\text{O}$  -  $\text{Na}_2\text{SO}_4$  0.1 mol  $\text{L}^{-1}$

100 scans at 50  $\text{mV s}^{-1}$

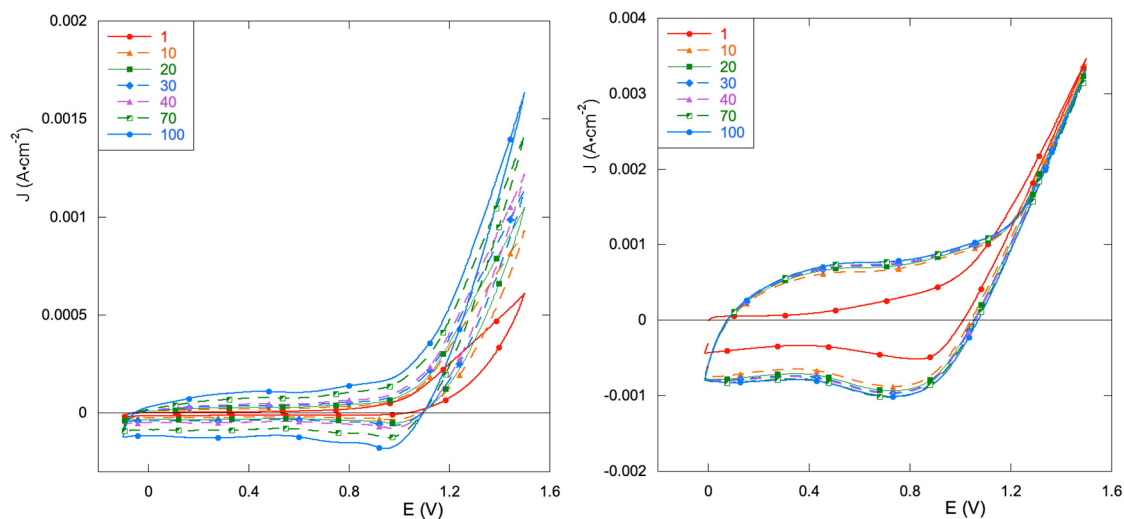


Figure S7: Selected cyclic voltammeteries for Electrode E0 (left) and Electrode E1 (right)

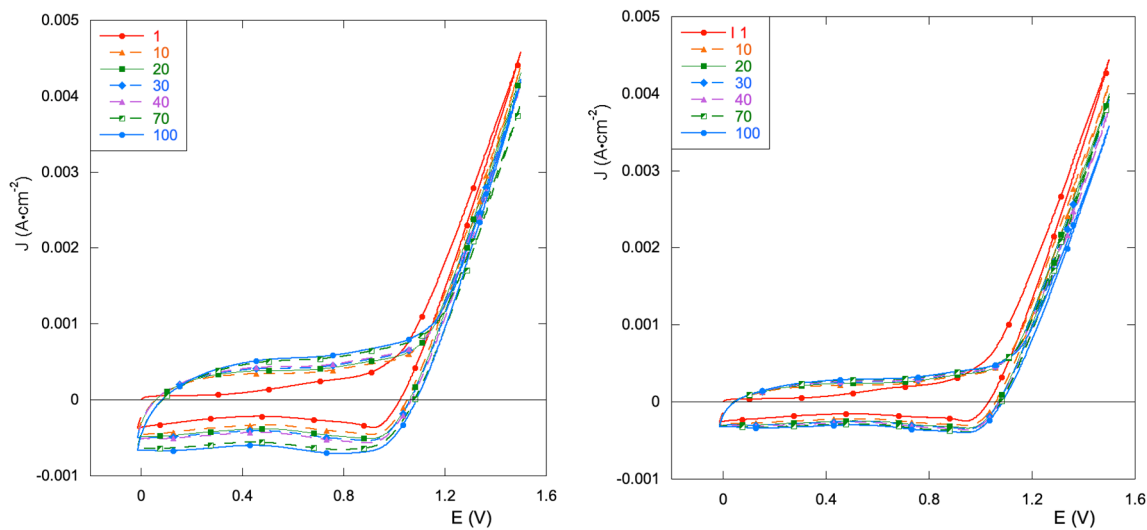


Figure S8: Selected cyclic voltammeteries for Electrode E2 (left) and Electrode E3 (right)