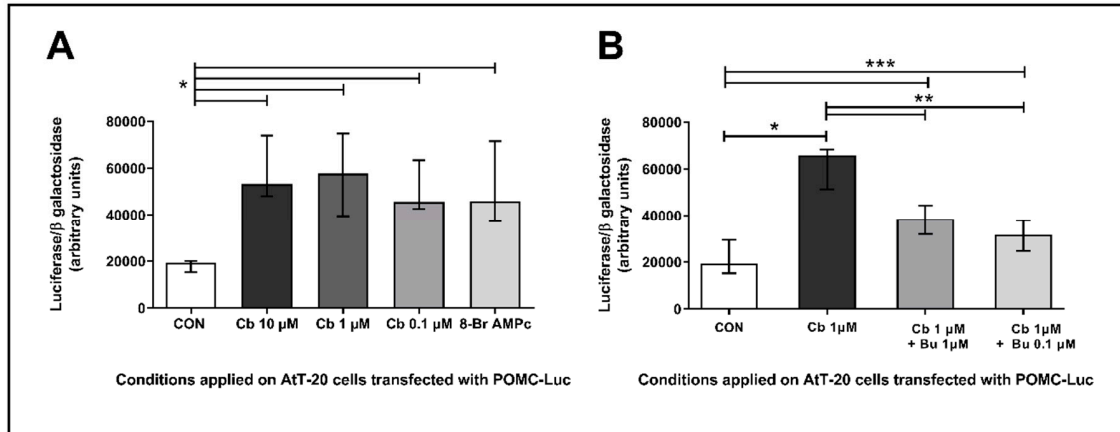


**Supplementary figure.** Dose-response effect of clenbuterol and butoxamine on  $\beta$ 2 adrenergic receptors expressed by AtT20-cells.



Results from experiments performed on AtT20 cells assessing the  $\beta$ 2AR response to different concentrations of clenbuterol (Cb) and butoxamine (Bu). Drugs were prepared in basal medium (CON) composed of serum-free DMEM and IBMX in dilutions ranging from 0.1 to 10  $\mu$ M. For Cb (A), selected dose was 1  $\mu$ M whereas for Bu it was 0.1  $\mu$ M (B). 8-Br cAMP is a cAMP permeable analog incorporated as positive control of cAMP-dependent signaling pathway.

(A)\* Kruskal-Wallis:  $p = 0.009$ ; (B) \*\*\* Kruskal-Wallis:  $p < 0.001$  (CON vs. all conditions); Mann Whitney U: \*  $p = 0.028$  (CON vs. Cb 1  $\mu$ M); \*\*  $p = 0.018$  (Cb 1  $\mu$ M vs. inhibitor treatment with Bu).