

Supplementary data

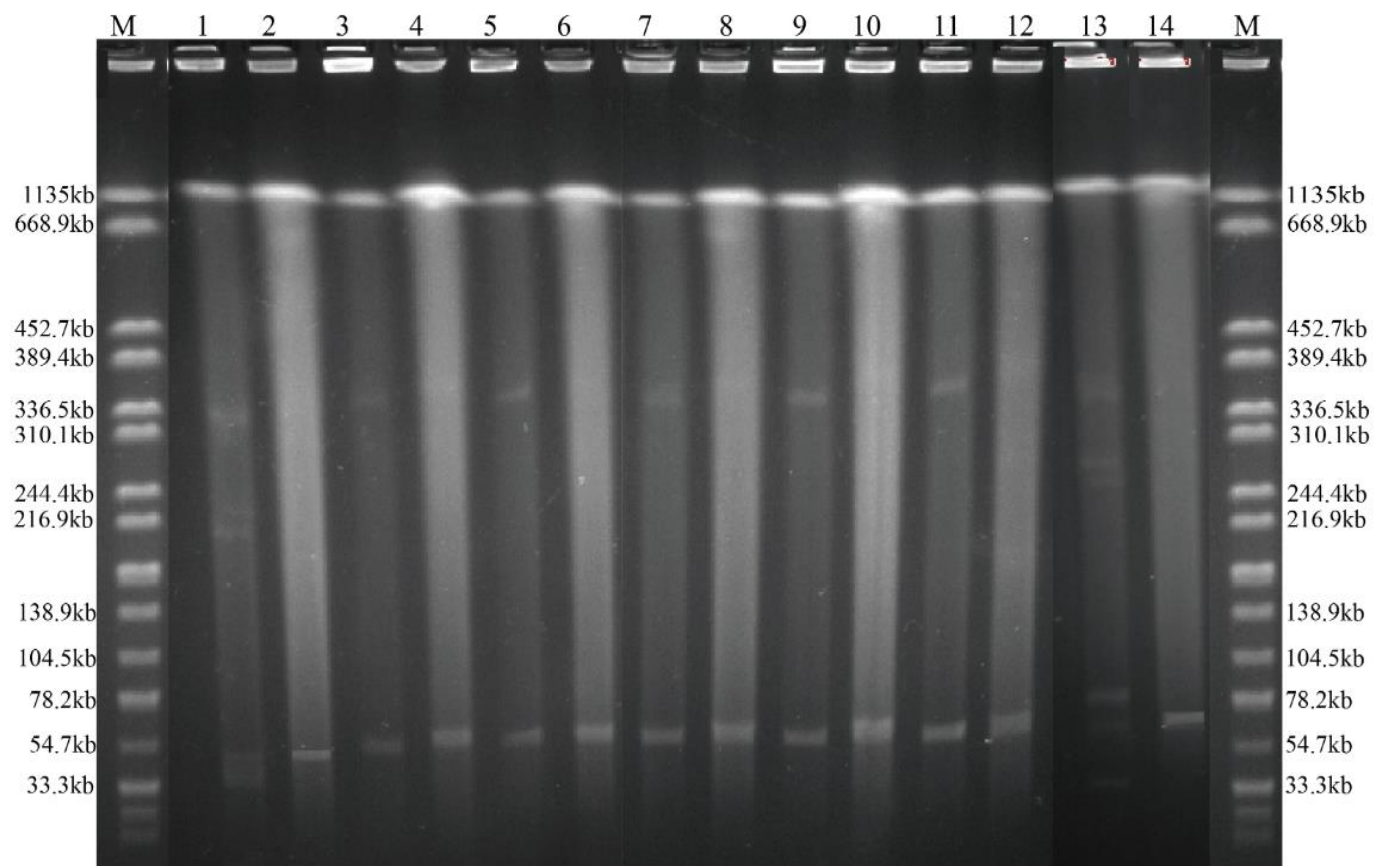


Figure S1. Location of the *pOxtA*-carrying plasmids in seven CoNS isolates and corresponding electrotransformants by S1-PFGE. Lanes M contain the *Xba*I pattern of *Salmonella braenderup* H9812 with the fragment sizes given in kilobases on the left-hand and right-hand sides; lanes 1 to 14 represent GDH8C97P, RN4220/pH97, GDY8P33P, RN4220/pY33, GDY8P50P, RN4220/pY50, GDY8P58P, RN4220/pY58, GDY8P60P, RN4220/pY60, GDY8P80P, RN4220/pY80, GDY8P136P and RN4220/pY136, respectively.