

**Table S1.** The names and sequences of the primers used for random amplified polymorphic DNA – polymerase chain reaction (RAPD-PCR) analysis for each *Candida* sp.

| No. | <i>Candida</i> sp.       | Primer | Sequence 5' – 3' |
|-----|--------------------------|--------|------------------|
| 1.  | <i>C. albicans</i>       | 1247   | AAGAGCCCCGT      |
| 2.  |                          | 1290   | GTGGATGCGA       |
| 3.  | <i>C. dubliniensis</i>   | SOY    | AGGTCAGTGA       |
| 4.  |                          | 1247   | AAGAGCCCCGT      |
| 5.  | <i>C. parapsilosis</i>   | RP2    | AAGGATCAGA       |
| 6.  |                          | 1247   | AAGAGCCCCGT      |
| 7.  | <i>C. guilliermondii</i> | 1247   | AAGAGCCCCGT      |
| 8.  |                          | 1290   | GTGGATGCGA       |
| 9.  | <i>C. krusei</i>         | SOY    | AGGTCAGTGA       |
| 10. |                          | RP2    | AAGGATCAGA       |

**Table S2.** A detailed summary of the study group and results obtained in this study.

| No. | No. of family | Age | Family member | Candida sp.              | Biochemical tests |            | Source             | Name of strain | Genotype/Unique pattern (Un) |
|-----|---------------|-----|---------------|--------------------------|-------------------|------------|--------------------|----------------|------------------------------|
|     |               |     |               |                          | Germ tube         | ATB ID 32C |                    |                |                              |
| 1.  | F1            | 42  | Mother        | <i>C. albicans</i>       | POS               | 7349350215 | Oral cavity        | F1_M_OC1_CA    | A4                           |
|     |               |     |               |                          | POS               | 7349350215 |                    | F1_M_OC2_CA    | A4                           |
|     |               |     |               | <i>C. albicans</i>       | POS               | 7347350215 | Oral cavity        | F1_T1_OC_CA    | A3                           |
| 2.  |               | 12  | Twin 1        | <i>C. krusei</i>         | NEG               | 0300010001 | Anus               | F1_T1_A_CK     | A1                           |
|     |               |     |               |                          | NEG               | 0300010001 | Oral cavity        | F1_T1_OC_CK    | A1                           |
|     |               |     | Twin 2        | <i>C. albicans</i>       | POS               | 7347350215 | Oral cavity        | F1_T2_OC_CA    | A4                           |
| 3.  |               |     |               |                          | POS               | 7347350215 | Anus               | F1_T2_A_CA     | A4                           |
| 4.  | F2            | 29  | Father        | <i>C. albicans</i>       | POS               | 7347340015 | Oral cavity        | F2_F_OC_CA     | A2                           |
|     |               |     |               |                          | POS               | 7347350215 | Oral cavity        | F2_M_OC1_CA    | B                            |
|     |               |     |               | <i>C. albicans</i>       | POS               | 7347340215 |                    | F2_M_OC2_CA    | B                            |
| 5.  |               | 32  | Mother        |                          | POS               | 7347350215 | Anus               | F2_M_A_CA      | B                            |
|     |               |     |               | <i>C. parapsilosis</i>   | NEG               | 5507360317 | Interdigital space | F2_M_IS_CP     | E                            |
|     |               |     |               | <i>C. albicans</i>       | POS               | 7347350215 | Oral cavity        | F2_T2_OC_CA    | B                            |
|     |               |     |               |                          | POS               | 7347350215 | Anus               | F2_T2_A_CA     | B                            |
| 6.  |               | 6   | Twin 2        | <i>C. guilliermondii</i> | NEG               | 5577352117 | Oral cavity        | F2_T2_OC_CG    | B2                           |
|     |               |     |               |                          | NEG               | 5577352117 | Anus               | F2_T2_A_CG     | B2                           |
|     |               |     |               | <i>C. parapsilosis</i>   | NEG               | 5577352117 | Interdigital space | F2_T2_IS_CG    | B2                           |
|     |               |     |               |                          | NEG               | 5547350317 | Anus               | F2_T2_A_CP     | E                            |
| 7.  | F3            | 46  | Mother        | <i>C. albicans</i>       | POS               | 7347350015 | Oral cavity        | F3_M_OC1_CA    | A2                           |
|     |               |     |               |                          | POS               | 7347350015 |                    | F3_M_OC2_CA    | A2                           |
|     |               |     |               |                          | POS               | 7347340015 |                    | F3_M_OC3_CA    | A2                           |
| 8.  |               | 11  | Twin 1        | <i>C. albicans</i>       | POS               | 7347340015 | Anus               | F3_T1_A1_CA    | A2                           |
|     |               |     |               |                          | POS               | 7347340015 |                    | F3_T1_A2_CA    | A2                           |
| 9.  |               | 45  | Father        | <i>C. albicans</i>       | POS               | 7346340015 | Oral cavity        | F4_F_OC1_CA    | C4                           |
|     |               |     |               |                          | POS               | 7347340015 |                    | F4_F_OC2_CA    | C4                           |
|     | F4*           | 43  | Mother        | <i>C. albicans</i>       | POS               | 7347340015 | Oral cavity        | F4_M_OC1_CA    | C4                           |
|     |               |     |               |                          | POS               | 7347340015 |                    | F4_M_OC2_CA    | C4                           |
|     |               |     |               |                          | POS               | 7347340015 | Anus               | F4_M_A1_CA     | C4                           |
|     |               |     |               |                          | POS               | 7347340015 |                    | F4_M_A2_CA     | C4                           |
|     |               |     |               |                          | POS               | 7347340015 | Oral cavity        | F4_T1_OC1_CA   | C4                           |
|     |               |     |               |                          | POS               | 7347340015 |                    | F4_T1_OC2_CA   | C4                           |
| 12. |               |     | Twin 2        | <i>C. albicans</i>       | POS               | 7347340015 | Oral cavity        | F4_T2_OC_CA    | C4                           |
| 13. | F5*           | 40  | Mother        | <i>C. albicans</i>       | POS               | 7347350215 | Oral cavity        | F5_M_OC_CA     | C2                           |
|     |               |     |               |                          | POS               | 7347140015 |                    | F5_T1_OC1_CA   | C3                           |
| 14. |               | 14  | Twin 1        | <i>C. albicans</i>       | POS               | 7347340015 | Oral cavity        | F5_T1_OC2_CA   | C2                           |
|     |               |     |               |                          | POS               | 7347140015 |                    | F5_T1_OC3_CA   | C2                           |

|     |            |             |                 |             |            |             |                    |              |     |
|-----|------------|-------------|-----------------|-------------|------------|-------------|--------------------|--------------|-----|
| 15. |            | Twin 2      | C. albicans     | POS         | 7347140015 | Oral cavity | F5_T2_OC_CA        | C2           |     |
|     |            |             |                 | POS         | 7347140015 | Anus        | F5_T2_A1_CA        | C2           |     |
|     |            |             |                 | POS         | 7347140015 |             | F5_T2_A2_CA        | C3           |     |
| 16. | 29         | Father      | C. albicans     | POS         | 7367340015 | Oral cavity | F6_F_OC1_CA        | D2           |     |
|     |            |             |                 | POS         | 7347340015 |             | F6_F_OC2_CA        | D2           |     |
|     |            |             |                 | POS         | 7347340015 |             | F6_F_OC3_CA        | D2           |     |
|     |            |             |                 | POS         | 7146340015 |             | F6_F_OC4_CA        | D2           |     |
|     |            |             |                 | POS         | 7146340015 | Anus        | F6_F_A_CA          | D2           |     |
|     |            |             |                 | POS         | 7347140015 | Oral cavity | F6_M_OC1_CA        | D2           |     |
| POS | 7347140015 | F6_M_OC2_CA | D2              |             |            |             |                    |              |     |
| POS | 7346140015 | F6_M_OC3_CA | D2              |             |            |             |                    |              |     |
| POS | 7347340015 | F6_M_OC4_CA | D2              |             |            |             |                    |              |     |
| 17. | F6*        | 29          | Mother          | C. albicans | POS        | 7347140015  | Oral cavity        | F6_T1_OC_CA  | D2  |
|     |            |             |                 |             | POS        | 7347140015  |                    | F6_T1_A1_CA  | C1  |
|     |            |             |                 |             | POS        | 7347140015  |                    | F6_T1_A2_CA  | C1  |
| 18. | 2          | Twin 1      | C. albicans     | POS         | 7347140015 | Oral cavity | F6_T2_OC1_CA       | C1           |     |
|     |            |             |                 | POS         | 7347140015 |             | F6_T2_OC2_CA       | D2           |     |
|     |            |             |                 | POS         | 7347140015 |             | F7_M_OC_CA         | D1           |     |
| 19. | 36         | Mother      | C. albicans     | POS         | 7347340015 | Navel       | F7_M_N_CA          | D1           |     |
|     |            |             |                 | POS         | 7347340015 |             | F7_SIB_OC_CA       | D1           |     |
|     |            |             |                 | POS         | 7347340015 |             | F7_T1_OC_CA        | D1           |     |
| 20. | 10         | Siblings    | C. albicans     | POS         | 7347340015 | Oral cavity | F7_T2_OC_CA        | D1           |     |
|     |            |             |                 | POS         | 7346340015 |             | Oral cavity        | F8_B_OC_CA   | Un3 |
|     |            |             |                 | POS         | 5547350317 |             | Interdigital space | F8_SIB_IS_CP | H2  |
| 21. | 11         | Siblings    | C. parapsilosis | POS         | 7347340015 | Oral cavity | F8_T1_OC_CA        | I            |     |
|     |            |             |                 | POS         | 7347340015 |             | F8_T2_OC1_CA       | I            |     |
|     |            |             |                 | POS         | 7347340015 |             | F8_T2_OC2_CA       | I            |     |
| 22. | 9          | Twin 2      | C. albicans     | NEG         | 5547350717 | Oral cavity | F8_T2_OC1_CP       | H1           |     |
|     |            |             |                 | NEG         | 5547350317 |             | F8_T2_OC2_CP       | H1           |     |
|     |            |             |                 | NEG         | 5542350317 |             | F8_T2_OC3_CP       | H1           |     |
|     |            |             |                 | NEG         | 5542350317 |             | F8_T2_OC4_CP       | H1           |     |
|     |            |             |                 | POS         | 7347340015 |             | Oral cavity        | F9_M_OC_CA   | J5  |
| 23. | 34         | Mother      | C. albicans     | POS         | 7347340015 | Anus        | F9_M_A_CA          | J3           |     |
|     |            |             |                 | NEG         | 5547350317 | Oral cavity | F9_M_OC_CP         | A1           |     |
|     |            |             | C. parapsilosis | POS         | 7147340015 | Oral cavity | F9_T1_OC_CA        | J4           |     |
| 24. | F9         | 1           | Twin 1          | C. albicans | POS        | 7147340015  | Interdigital space | F9_T1_IS_CA  | Un2 |
|     |            |             |                 |             | POS        | 7147340015  | Anus               | F9_T1_A_CA   | J5  |
|     |            |             |                 | C. krusei   | NEG        | 0300010001  | Anus               | F9_T1_A_CK   | C2  |
|     |            |             |                 |             | POS        | 7347340015  | Oral cavity        | F9_T2_OC_CA  | J4  |
| 25. | Twin 2     | C. albicans | POS             | 7347340015  | Anus       | F9_T2_A_CA  | J4                 |              |     |

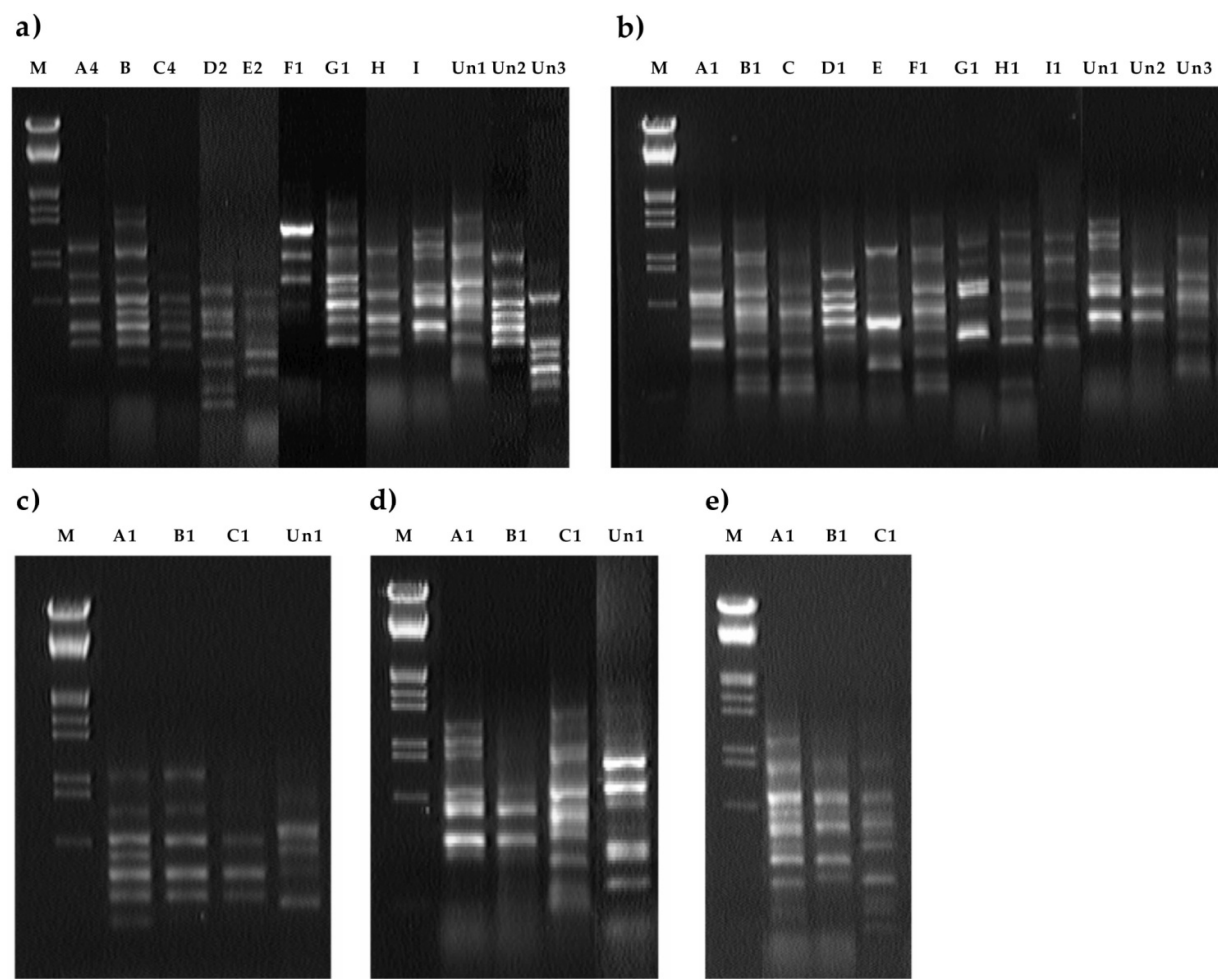
|     |      |        |                        |                        |     |            |                    |               |     |
|-----|------|--------|------------------------|------------------------|-----|------------|--------------------|---------------|-----|
|     |      |        |                        | <i>C. parapsilosis</i> | NEG | 5547350317 | Oral cavity        | F9_T2_OC_CP   | A2  |
|     |      |        |                        |                        | NEG | 5547350317 | Anus               | F9_T2_A_CP    | A2  |
|     |      |        |                        | <i>C. krusei</i>       | NEG | 0300010001 | Oral cavity        | F9_T2_OC_CK   | C2  |
|     |      |        |                        |                        | NEG | 0300010001 | Anus               | F9_T2_A_CK    | C1  |
|     |      |        |                        |                        | NEG | 0300010001 | Interdigital space | F9_T2_IS_CK   | C3  |
| 30. | 41   | Mother | <i>C. albicans</i>     |                        | POS | 7347340015 | Oral cavity        | F10_M_OC_CA   | M3  |
|     |      |        |                        |                        | POS | 7147340015 | Anus               | F10_M_A_CA    | M3  |
|     |      |        |                        |                        | POS | 7347340015 | Interdigital space | F10_M_IS_CA   | M4  |
| 31. | F10* | Twin 1 | <i>C. albicans</i>     |                        | POS | 7347340015 | Oral cavity        | F10_T1_OC1_CA | M3  |
|     |      |        |                        |                        | POS | 7347340015 |                    | F10_T1_OC2_CA | M3  |
| 32. | 13   | Twin 2 | <i>C. albicans</i>     |                        | POS | 7347340015 | Oral cavity        | F10_T2_OC1_CA | M3  |
|     |      |        |                        |                        | POS | 7347340015 |                    | F10_T2_OC2_CA | M3  |
|     |      |        |                        |                        | POS | 7347340015 | Anus               | F10_T2_A_CA   | M3  |
| 33. | F11  | 21     | Twin 1                 | <i>C. albicans</i>     | POS | 7347350215 | Oral cavity        | F11_T1_OC_CA  | M3  |
| 34. |      | 21     | Twin 2                 | <i>C. albicans</i>     | POS | 7347350215 | Anus               | F11_T2_A_CA   | M3  |
|     |      |        |                        | <i>C. albicans</i>     | POS | 7347340015 | Oral cavity        | F12_T1_OC_CA  | M2  |
| 35. | F12* | Twin 1 | <i>C. parapsilosis</i> |                        | NEG | 7147350715 | Oral cavity        | F12_T1_OC1_CP | B1  |
|     |      |        |                        |                        | NEG | 7147350715 |                    | F12_T1_OC2_CP | Un2 |
|     |      |        |                        |                        | NEG | 5545300117 | Interdigital space | F12_T1_IS_CP  | B2  |
| 36. |      | Twin 2 | <i>C. albicans</i>     |                        | POS | 7347340015 | Oral cavity        | F12_T2_OC1_CA | M2  |
|     |      |        |                        |                        | POS | 7347340015 |                    | F12_T2_OC2_CA | M1  |
|     |      |        |                        | <i>C. parapsilosis</i> | NEG | 7147350715 | Interdigital space | F12_T2_IS_CP  | B3  |
|     |      |        |                        |                        | POS | 7346340015 | Oral cavity        | F13_T1_OC1_CA | J1  |
| 37. | F13* | 17     | Twin 1                 | <i>C. albicans</i>     | POS | 7346340015 |                    | F13_T1_OC2_CA | J1  |
|     |      |        |                        |                        | POS | 7346340015 | Anus               | F13_T1_A1_CA  | J1  |
|     |      |        |                        |                        | POS | 7346340015 |                    | F13_T1_A2_CA  | J1  |
| 38. |      | Twin 2 | <i>C. albicans</i>     |                        | POS | 7346340015 | Oral cavity        | F13_T2_OC_CA  | J1  |
| 39. |      | 6      | Siblings               | <i>C. albicans</i>     | POS | 7146340015 | Oral cavity        | F14_SIB_OC_CA | Un1 |
| 40. | F14  | Twin 1 | <i>C. albicans</i>     |                        | POS | 7146340015 | Oral cavity        | F14_T1_OC_CA  | A1  |
|     |      | 2      | Twin 2                 | <i>C. albicans</i>     | POS | 7146340015 |                    | F14_T2_IS1_CA | A1  |
|     |      |        |                        |                        | POS | 7146340015 | Interdigital space | F14_T2_IS2_CA | A1  |
|     |      |        |                        |                        | POS | 7146340015 |                    | F14_T2_IS3_CA | F1  |
| 42. | 39   | Mother | <i>C. parapsilosis</i> |                        | NEG | 5545350117 | Oral cavity        | F15_M_OC_CP   | C   |
|     |      |        |                        |                        | NEG | 5545350117 | Interdigital space | F15_M_IS1_CP  | C   |
|     |      |        |                        |                        | NEG | 5545350117 |                    | F15_M_IS2_CP  | D2  |
| 43. | F15  | Twin 1 | <i>C. albicans</i>     |                        | POS | 7146340015 | Oral cavity        | F15_T1_OC_CA  | M3  |
|     |      | 9      | Twin 1                 | <i>C. parapsilosis</i> | NEG | 7147350715 | Interdigital space | F15_T1_IS1_CP | C   |
|     |      |        |                        |                        | NEG | 7147350715 |                    | F15_T1_IS2_CP | Un3 |
| 44. |      | Twin 2 | <i>C. albicans</i>     |                        | POS | 7146340015 | Oral cavity        | F15_T2_OC1_CA | M3  |
|     |      |        |                        |                        | POS | 7146340015 |                    | F15_T2_OC2_CA | M3  |

|                          |            |               |                    |                          |                        |                          |                    |                    |                    |                        |     |
|--------------------------|------------|---------------|--------------------|--------------------------|------------------------|--------------------------|--------------------|--------------------|--------------------|------------------------|-----|
| 45.                      | F16*       | 34            | Mother             | <i>C. parapsilosis</i>   | NEG                    | 7147350117               | Interdigital space | F15_T2_IS1_CP      | D1                 |                        |     |
|                          |            |               |                    |                          | NEG                    | 5545350117               |                    | F15_T2_IS2_CP      | D1                 |                        |     |
|                          |            |               |                    |                          | NEG                    | 5545350117               |                    | F15_T2_IS3_CP      | D1                 |                        |     |
|                          |            | 39            | Father             | <i>C. albicans</i>       | POS                    | 7147340015               | Oral cavity        | F16_M_OC1_CA       | F2                 |                        |     |
|                          |            |               |                    |                          | POS                    | 7146340015               |                    | F16_M_OC2_CA       | F2                 |                        |     |
|                          |            |               |                    |                          | POS                    | 7146340015               |                    | Anus               | F16_M_A_CA         | F2                     |     |
|                          |            | 11            | Twin 1             | <i>C. albicans</i>       | POS                    | 7147340015               | Oral cavity        | F16_F_OC_CA        | J2                 |                        |     |
|                          |            |               |                    |                          | POS                    | 7147340015               |                    | Interdigital space | F16_F_IS_CA        | J2                     |     |
|                          |            |               |                    |                          | POS                    | 7147340015               |                    | F16_T1_OC1_CA      | J2                 |                        |     |
|                          |            | 47.           | 11                 | Twin 1                   | <i>C. albicans</i>     | POS                      | 7146340015         | Oral cavity        | F16_T1_OC2_CA      | F1                     |     |
| POS                      | 7147340015 |               |                    |                          |                        | F16_T1_OC3_CA            | F2                 |                    |                    |                        |     |
| POS                      | 7147340015 |               |                    |                          |                        | F16_T1_OC4_CA            | F2                 |                    |                    |                        |     |
| 48.                      |            |               | Twin 2             | <i>C. albicans</i>       | POS                    | 7147340015               | Oral cavity        | F16_T2_OC_CA       | J2                 |                        |     |
| 49.                      |            | 35            | Father             | <i>C. krusei</i>         | NEG                    | 0300010001               | Oral cavity        | F17_F_OC_CK        | B2                 |                        |     |
| 50.                      | F17        | 13            | Twin 1             | <i>C. parapsilosis</i>   | NEG                    | 5547350717               | Oral cavity        | F17_T1_OC_CP       | Un1                |                        |     |
|                          |            |               |                    | <i>C. krusei</i>         | NEG                    | 0300010001               | Oral cavity        | F17_T1_OC_CK       | B1                 |                        |     |
|                          |            |               |                    | Twin 2                   | <i>C. parapsilosis</i> | NEG                      | 7547350317         | Interdigital space | F17_T2_IS1_CP      | A1                     |     |
|                          |            | NEG           | 7347340015         |                          | F17_T2_IS2_CP          | A1                       |                    |                    |                    |                        |     |
|                          |            | 52.           | F18                | 27                       | Twin 1                 | <i>C. krusei</i>         | NEG                | 0300010001         | Oral cavity        | F17_T2_OC_CK           | B1  |
|                          |            |               |                    |                          |                        | <i>C. dubliniensis</i>   | POS                | 7042100015         | Oral cavity        | F18_T1_OC1_CD          | A2  |
|                          |            |               |                    |                          |                        | POS                      | 7142100015         | F18_T1_OC2_CD      |                    | A1                     |     |
|                          |            | 53.           | F18                | 27                       | Twin 1                 | <i>C. guilliermondii</i> | NEG                | 7577352117         | Interdigital space | F18_T1_IS1_CG          | A1  |
|                          |            |               |                    |                          |                        | NEG                      | 5577352117         | F18_T1_IS2_CG      |                    | A2                     |     |
|                          |            |               |                    |                          |                        | 53.                      | F18                | 27                 | Twin 2             | <i>C. dubliniensis</i> | POS |
| POS                      | 7142100015 | F18_T2_OC2_CD | A1                 |                          |                        |                          |                    |                    |                    |                        |     |
| <i>C. guilliermondii</i> | NEG        | 5577352117    | Interdigital space | F18_T2_IS_CG             | A1                     |                          |                    |                    |                    |                        |     |
| 54.                      | F19        | 47            | Mother             | <i>C. guilliermondii</i> | NEG                    | 5577352115               | Oral cavity        | F19_M_OC_CG        | C3                 |                        |     |
|                          |            |               |                    |                          | NEG                    | 7577350517               | Anus               | F19_M_A_CG         | C3                 |                        |     |
|                          |            |               |                    |                          | NEG                    | 5577352115               | Interdigital space | F19_M_IS_CG        | C3                 |                        |     |
|                          |            | 11            | Twin 1             | <i>C. dubliniensis</i>   | POS                    | 6142100015               | Oral cavity        | F19_T1_OC_CD       | B1                 |                        |     |
|                          |            |               |                    |                          | POS                    | 7042100015               | Anus               | F19_T1_A_CD        | B2                 |                        |     |
|                          |            |               |                    |                          | NEG                    | 5577352117               | Oral cavity        | F19_T1_OC_CG       | C3                 |                        |     |
|                          |            | 55.           | F19                | 11                       | Twin 1                 | <i>C. guilliermondii</i> | NEG                | 5577352117         | Anus               | F19_T1_A1_CG           | C1  |
|                          |            |               |                    |                          |                        |                          | NEG                | 5577352117         |                    | F19_T1_A2_CG           | Un1 |
|                          |            |               |                    |                          |                        |                          | NEG                | 5577352117         | Interdigital space | F19_T1_IS_CG           | C1  |
|                          |            | 56.           | F19                | 11                       | Twin 1                 | <i>C. guilliermondii</i> | NEG                | 5577352115         | Navel              | F19_T1_N_CG            | C1  |
| POS                      | 6142100015 |               |                    |                          |                        |                          | Oral cavity        | F19_T2_OC1_CD      | B2                 |                        |     |
| POS                      | 7042100015 |               |                    |                          |                        |                          |                    | F19_T2_OC2_CD      | B2                 |                        |     |
| 57.                      | F20        | 50            | Twin 1             | <i>C. dubliniensis</i>   | POS                    | 7142100015               | Anus               | F20_T1_A1_CD       | C1                 |                        |     |
|                          |            |               |                    |                          | POS                    | 6142100015               |                    | F20_T1_A2_CD       | Un1                |                        |     |

|     |      |    |        |                          |     |            |                    |               |    |
|-----|------|----|--------|--------------------------|-----|------------|--------------------|---------------|----|
| 58. |      |    | Twin 2 | <i>C. dubliniensis</i>   | POS | 7142100015 | Oral cavity        | F20_T2_OC_CD  | C2 |
|     |      |    |        |                          | POS | 7146340015 | Oral cavity        | F21_T1_OC_CA  | H  |
| 59. |      |    | Twin 1 | <i>C. albicans</i>       | POS | 7146340015 | Anus               | F21_T1_A_CA   | H  |
|     | F21* | 67 |        | <i>C. guilliermondii</i> | NEG | 5577352115 | Anus               | F21_T1_A_CG   | C1 |
| 60. |      |    | Twin 2 | <i>C. albicans</i>       | POS | 7347340015 | Oral cavity        | F21_T2_OC_CA  | H  |
|     |      |    |        | <i>C. guilliermondii</i> | NEG | 5577352115 | Oral cavity        | F21_T2_OC_CG  | C3 |
| 61. |      |    | Twin 1 | <i>C. albicans</i>       | POS | 7147340015 | Oral cavity        | F22_T1_OC_CA  | F3 |
| 62. | F22* | 34 | Twin 2 | <i>C. albicans</i>       | POS | 7147340015 | Oral cavity        | F22_T2_OC_CA  | F3 |
|     |      |    |        |                          | POS | 7147340015 |                    | F23_M_OC1_CA  | G2 |
| 63. |      | 36 | Mother | <i>C. albicans</i>       | POS | 7147340015 | Oral cavity        | F23_M_OC2_CA  | G1 |
|     |      |    |        |                          | POS | 7147340015 |                    | F23_M_OC3_CA  | G1 |
| 64. | F23  |    | Twin 1 | <i>C. guilliermondii</i> | NEG | 5577352117 | Interdigital space | F23_T1_IS_CG  | C2 |
|     |      | 8  |        | <i>C. albicans</i>       | POS | 7143340015 | Oral cavity        | F23_T2_OC_CA  | G1 |
| 65. |      |    | Twin 2 | <i>C. guilliermondii</i> | NEG | 5577352117 | Interdigital space | F23_T2_IS_CG  | C2 |
|     |      |    |        |                          | POS | 7347350215 |                    | F24_T1_OC1_CA | K4 |
|     |      |    |        |                          | POS | 7347350215 | Oral cavity        | F24_T1_OC2_CA | K4 |
| 66. | F24  | 26 | Twin 1 | <i>C. albicans</i>       | POS | 7347350215 |                    | F24_T1_A1_CA  | K4 |
|     |      |    |        |                          | POS | 7347350215 | Anus               | F24_T1_A2_CA  | K4 |
|     |      |    |        |                          | POS | 7347350215 |                    | F24_T1_A3_CA  | K4 |
| 67. |      | 34 | Father | <i>C. albicans</i>       | POS | 7146340015 | Oral cavity        | F25_F_OC1_CA  | K2 |
|     |      |    |        |                          | POS | 7146340015 |                    | F25_F_OC2_CA  | K2 |
|     |      |    |        | <i>C. albicans</i>       | POS | 7146340015 | Oral cavity        | F25_T1_OC_CA  | K2 |
|     |      |    |        |                          | POS | 7146340015 | Navel              | F25_T1_N_CA   | K2 |
| 68. | F25* |    | Twin 1 |                          | NEG | 5577352117 |                    | F25_T1_OC1_CG | B1 |
|     |      | 2  |        | <i>C. guilliermondii</i> | NEG | 5577352117 | Oral cavity        | F25_T1_OC2_CG | B1 |
|     |      |    |        |                          | NEG | 5577352117 |                    | F25_T1_OC3_CG | B1 |
| 69. |      |    | Twin 2 | <i>C. albicans</i>       | POS | 7146340015 | Oral cavity        | F25_T2_OC_CA  | K2 |
|     |      |    |        | <i>C. guilliermondii</i> | NEG | 5577352117 | Oral cavity        | F25_T2_OC_CG  | B1 |
|     |      |    |        |                          | NEG | 5547350717 | Oral cavity        | F26_T1_OC_CP  | F1 |
| 70. |      |    | Twin 1 | <i>C. parapsilosis</i>   | NEG | 5547350717 | Anus               | F26_T1_A_CP   | F1 |
|     | F26  | 24 |        |                          | NEG | 7547350317 | Interdigital space | F26_T1_IS_CP  | F1 |
|     |      |    |        |                          | POS | 7347340015 | Oral cavity        | F26_T2_OC_CA  | K2 |
| 71. |      |    | Twin 2 | <i>C. albicans</i>       | POS | 7347340015 |                    | F26_T2_A1_CA  | K2 |
|     |      |    |        |                          | POS | 7347340015 | Anus               | F26_T2_A2_CA  | K2 |
| 72. |      | 27 | Mother | <i>C. albicans</i>       | POS | 7346340015 | Oral cavity        | F27_M_OC_CA   | K1 |
|     |      |    |        | <i>C. parapsilosis</i>   | NEG | 5547350311 | Interdigital space | F27_M_IS_CP   | I2 |
| 73. | F27  |    | Twin 1 | <i>C. parapsilosis</i>   | NEG | 5547350311 | Interdigital space | F27_T1_IS_CP  | I1 |
|     |      | 1  |        |                          | POS | 7346340015 |                    | F27_T2_OC1_CA | K1 |
| 74. |      |    | Twin 2 | <i>C. albicans</i>       | POS | 7346340015 | Oral cavity        | F27_T2_OC2_CA | K1 |
| 75. | F28  | 40 | Mother | <i>C. albicans</i>       | POS | 7347350215 | Oral cavity        | F28_M_OC1_CA  | K3 |

|     |      |    |        |                   |     |            |                    |               |     |
|-----|------|----|--------|-------------------|-----|------------|--------------------|---------------|-----|
|     |      |    |        |                   | POS | 7347350215 |                    | F28_M_OC2_CA  | K3  |
|     |      |    |        |                   | POS | 7347350215 |                    | F28_M_OC3_CA  | K2  |
|     |      |    |        |                   | POS | 7347350215 | Anus               | F28_M_A_CA    | K3  |
| 76. |      | 17 | Twin 1 | C. albicans       | POS | 7347350215 | Oral cavity        | F28_T1_OC_CA  | K3  |
| 77. |      |    | Twin 2 | C. albicans       | POS | 7347350215 | Oral cavity        | F28_T2_OC_CA  | K2  |
|     |      |    |        |                   | POS | 7347350215 |                    | F29_T1_OC1_CA | E2  |
|     |      |    |        |                   | POS | 7347350215 |                    | F29_T1_OC2_CA | E2  |
| 78. | F29  | 15 | Twin 1 | C. albicans       | POS | 7347350215 | Oral cavity        | F29_T1_OC3_CA | E2  |
|     |      |    |        |                   | POS | 7347350215 |                    | F29_T1_OC4_CA | E2  |
|     |      |    |        |                   | POS | 7347350215 |                    | F29_T1_OC5_CA | E1  |
|     |      |    |        |                   | POS | 7347340015 | Anus               | F29_T1_A_CA   | E2  |
| 79. |      |    | Twin 2 | C. albicans       | POS | 7347350215 | Oral cavity        | F29_T2_OC_CA  | E2  |
| 80. |      |    | Twin 1 | C. parapsilosis   | NEG | 5547350317 | Oral cavity        | F30_T1_OC_CP  | G1  |
|     | F30  | 13 |        |                   | NEG | 5547350313 | Interdigital space | F30_T1_IS_CP  | F2  |
| 81. |      |    | Twin 2 | C. parapsilosis   | NEG | 5547350313 | Oral cavity        | F30_T2_OC1_CP | G1  |
|     |      |    |        |                   | NEG | 5547350313 |                    | F30_T2_OC2_CP | G2  |
| 82. |      | 27 | Mother | C. parapsilosis   | NEG | 5547350313 | Anus               | F31_M_A_CP    | J   |
| 83. |      | 29 | Father | C. parapsilosis   | NEG | 5547350317 | Anus               | F31_F_A_CP    | J   |
| 84. | F31  |    | Twin 1 | C. parapsilosis   | NEG | 5547350313 | Oral cavity        | F31_T1_OC_CP  | J   |
| 85. |      | 2  | Twin 2 | C. parapsilosis   | NEG | 5547350317 | Oral cavity        | F31_T2_OC_CP  | J   |
|     |      |    |        |                   | NEG | 5547350313 | Interdigital space | F31_T2_IS_CP  | Un4 |
| 88. | F32* | 44 | Twin 1 | C. albicans       | POS | 7143340015 | Oral cavity        | F32_T1_OC1_CA | L3  |
|     |      |    |        |                   | POS | 7346340015 |                    | F32_T1_OC2_CA | L2  |
| 87. |      |    | Twin 2 | C. albicans       | POS | 7346340015 | Oral cavity        | F32_T2_OC_CA  | L1  |
| 88. |      |    | Twin 1 | C. guilliermondii | NEG | 7577350517 | Interdigital space | F33_T1_IS_CG  | C2  |
|     | F33  | 9  |        |                   | NEG | 7577350517 |                    | F33_T2_IS1_CG | C2  |
| 89. |      |    | Twin 2 | C. guilliermondii | NEG | 7547350317 | Interdigital space | F33_T2_IS2_CG | C2  |

The genotypes of the different *Candida* strains are marked with the following colors: yellow – *Candida albicans*, blue – *Candida parapsilosis*, green – *Candida guilliermondii*, red – *Candida dubliniensis*, gray – *Candida krusei*. POS – positive, NEG – negative. \* – family in which affirmed occurrence monozygotic twins.



**Figure S1.** The representative examples of dendrograms for: a) *Candida albicans*, b) *C. parapsilosis*, c) *C. guilliermondii*, d) *C. dubliniensis* and e) *C. krusei*. M – marker.