

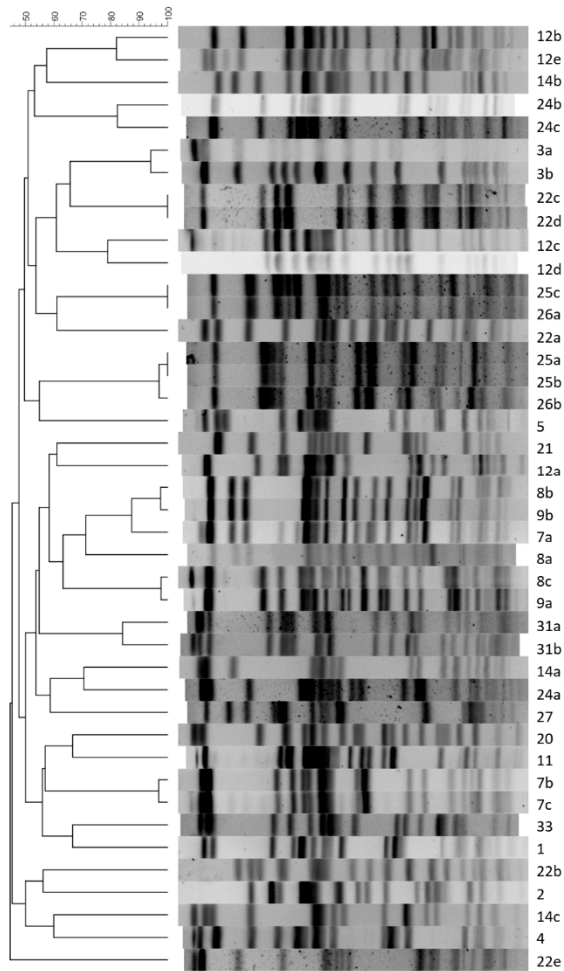
Sample	Location	Growth on AB plates	no. of AB plates with bacterial growth	Ampicillin	Cephalotin	Chloramphenicol	Ciprofloxacin	Colistin	Gentamycin	Sulfasoxazole	Tetracyclin	<i>E. coli</i> isolated
1	Wallnau	yes	1	no	no	no	no	yes	no	no	no	yes
2	Wallnau	yes	3	no	no	yes	no	yes	no	yes	no	yes
3	Wallnau	yes	6	yes	yes	yes	no	no	yes	yes	yes	yes
4	Wallnau	yes	2	no	yes	no	no	yes	no	no	no	yes
5	Wallnau	yes	1	no	no	no	no	yes	no	no	no	yes
6	Wallnau	yes	1	no	no	no	no	yes	no	no	no	no
7	Wallnau	yes	2	no	no	no	no	yes	no	no	yes	yes
8	Wallnau	yes	3	no	no	no	no	yes	no	yes	yes	yes
9	Wallnau	yes	3	no	yes	no	no	no	no	yes	yes	yes
10	Wallnau	no	0	no	no	no	no	no	no	no	no	x
11	Wallnau	yes	1	no	no	no	no	yes	no	no	no	yes
12	Sylt	yes	6	yes	yes	yes	no	yes	no	yes	yes	yes
13	Friedrichsgabekoog	yes	5	yes	yes	yes	no	yes	no	no	yes	no
14	Friedrichsgabekoog	yes	5	yes	yes	no	no	yes	no	yes	yes	yes
15	Friedrichsgabekoog	yes	6	yes	yes	yes	no	yes	no	yes	yes	yes
16	Friedrichsgabekoog	yes	2	no	no	no	no	yes	no	no	yes	no
17	Friedrichsgabekoog	yes	1	no	no	no	yes	no	no	no	no	yes
18	Friedrichsgabekoog	no	0	no	no	no	no	no	no	no	no	x
19	Friedrichsgabekoog	no	0	no	no	no	no	no	no	no	no	x
20	Friedrichsgabekoog	yes	1	no	no	no	no	yes	no	no	no	yes
21	Friedrichsgabekoog	yes	2	no	yes	no	no	yes	no	no	no	yes
22	Friedrichsgabekoog	yes	7	yes	yes	no	yes	yes	yes	yes	yes	yes
23	Friedrichsgabekoog	yes	2	no	no	yes	no	yes	no	no	no	no
24	Friedrichsgabekoog	yes	6	yes	no	yes	yes	yes	no	yes	yes	yes

25	Geltinger Birk	yes	7	yes	yes	yes	yes	yes	yes	no	yes	yes
26	Geltinger Birk	yes	4	yes	yes	no	no	yes	no	no	yes	yes
27	Geltinger Birk	yes	6	yes	yes	no	yes	yes	yes	no	yes	yes
28	Geltinger Birk	yes	5	yes	yes	yes	no	yes	no	no	yes	no
29	Geltinger Birk	no	0	no	no	no	no	no	no	no	no	x
30	Geltinger Birk	yes	5	yes	yes	yes	no	yes	no	no	yes	no
31	Geltinger Birk	yes	7	yes	yes	yes	yes	yes	no	yes	yes	yes
32	Geltinger Birk	yes	5	yes	yes	yes	yes	yes	no	no	no	no
33	Geltinger Birk	yes	4	yes	yes	yes	no	yes	no	no	no	yes

Supplementary Table S1. Antimicrobial plates. The table shows all cormorant sample numbers and which sample grew on which antibiotic containing plate as well if *E. coli* was isolated from at least one of the plates. No *E. coli* isolation was performed in table cells with x because of missing bacterial growth on all antibiotic containing agar plates. All samples showed bacterial growth either on Blood agar, Gassner agar or in the Mossel bouillon indicating bacterial presence in the samples.

Xbal - LT2

Xbal - LT2



Supplementary Figure S1. The figure shows the dendrogram including the pulsed-field gel electrophoresis band patterns of the 42 isolates that were typeable by XbaI macrorestriction.