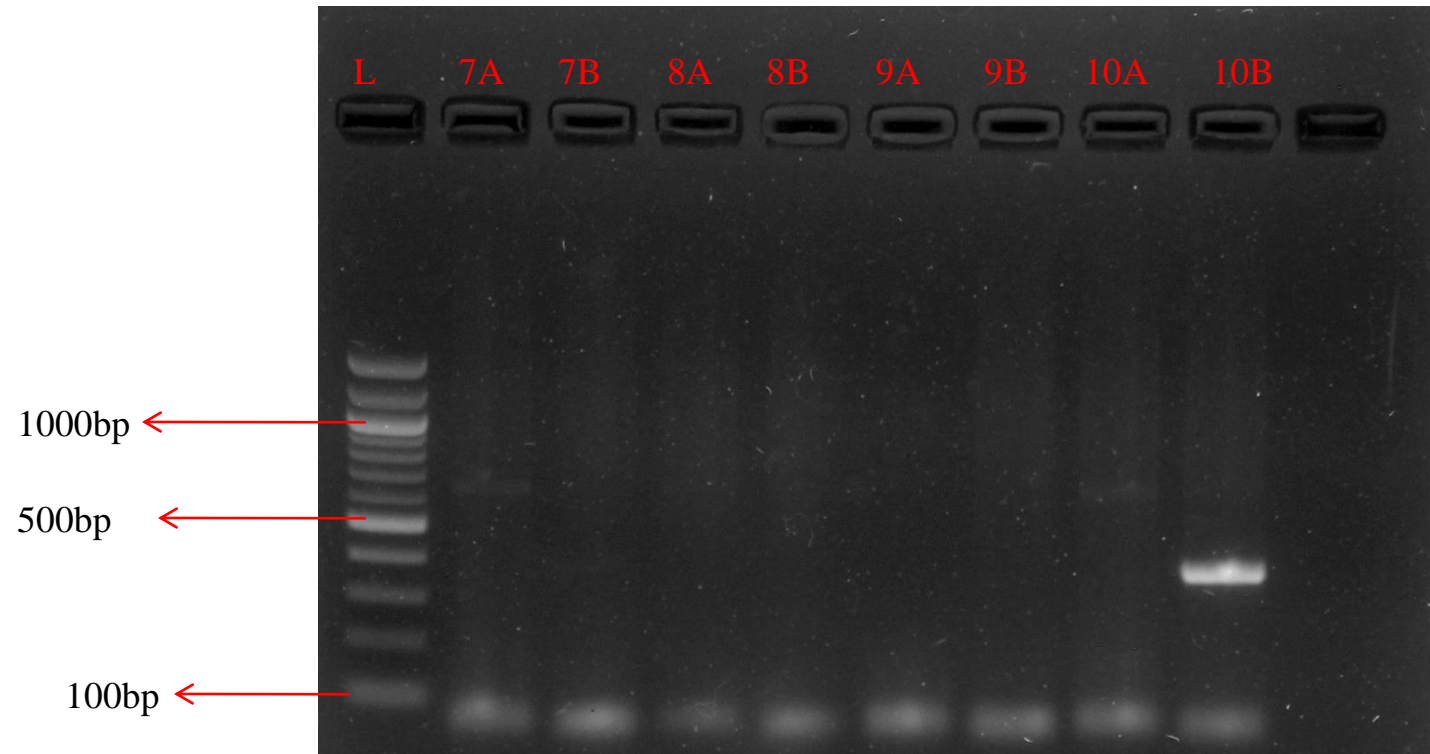


A. Human *estA* (StFh and StRh primers) – 151bp
vtx1 – 260bp
vtx2 – 420bp
ipaH – 647bp

1 – FH21E (*ipaH*)
 2 – FH24E
 3 – SH 70E (Human *estA*, *vtx1*, *ipaH*)
 4 – FH25E (Human *estA*, *ipaH*)

B. Porcine *estA* (StFp and StRp primers) – 160bp
eae – 377bp
eltA – 479bp

Figure S1a: Agarose gel electrophoresis image of multiplex PCR amplicon of DEC isolates. L: 100bp molecular ladder. Sample codes: 1A-4B

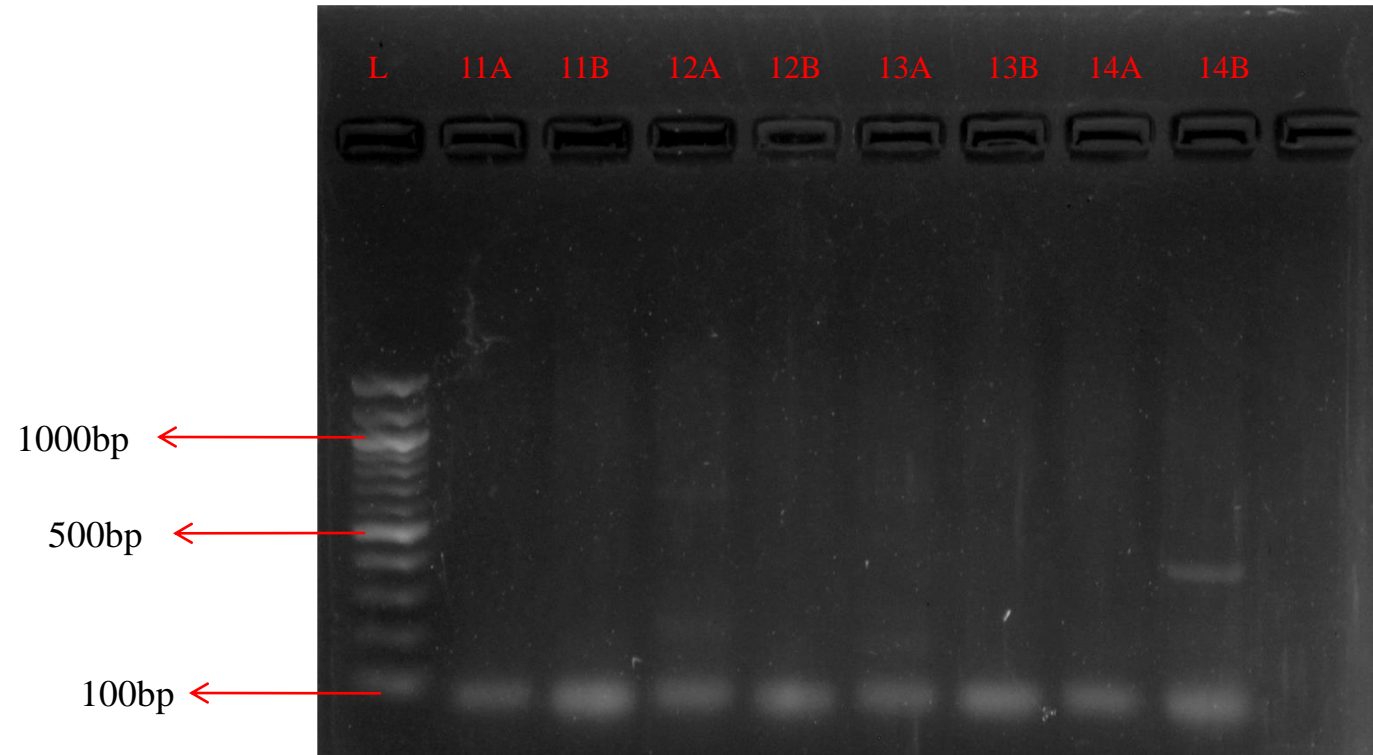


A. Human *estA* (StFh and StRh primers) – 151bp
vtx1 – 260bp
vtx2 – 420bp
ipaH – 647bp

7 – FH23E (*ipaH*)
 8 – FH22E
 9 – SH 73E
 10 – SH74E (*ipaH*, *eae*)

B. Porcine *estA* (StFp and StRp primers) – 160bp
eae – 377bp
eltA – 479bp

Figure S1b: Agarose gel electrophoresis image of multiplex PCR amplicon of DEC isolates. L: 100bp molecular ladder. Sample codes: 7A-10B

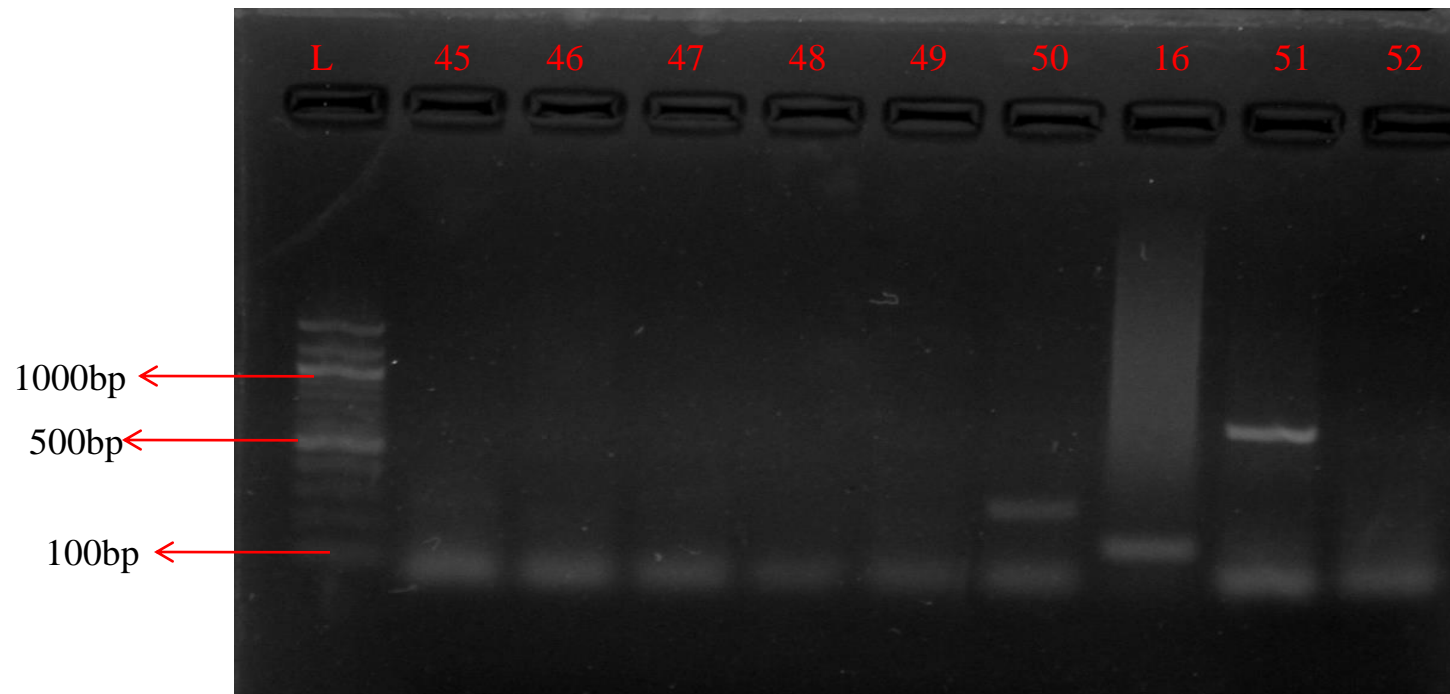


A. Human *estA* (StFh and StRh primers) – 151bp
vtx1 – 260bp
vtx2 – 420bp
ipaH – 647bp

11 – SH68E
 12 – SH65E (Human *estA* , *ipaH*)
 13 – SH61E
 14 – SH67E (*eae*)

B. Porcine *estA* (StFp and StRp primers) – 160bp
eae – 377bp
eltA – 479bp

Figure S1c: Agarose gel electrophoresis image of multiplex PCR amplicon of DEC isolates. L: 100bp molecular ladder. Sample codes: 11A-14B



A. Human *estA* (StFh and StRh primers) – 151bp
vtx1 – 260bp
vtx2 – 420bp
ipaH – 647bp

B. Porcine *estA* (StFp and StRp primers) – 160bp
eae – 377bp
eltA – 479bp

45– SH90E

46 – GH4E

47 – SH93E

48 –SH92E

49 –SH4A

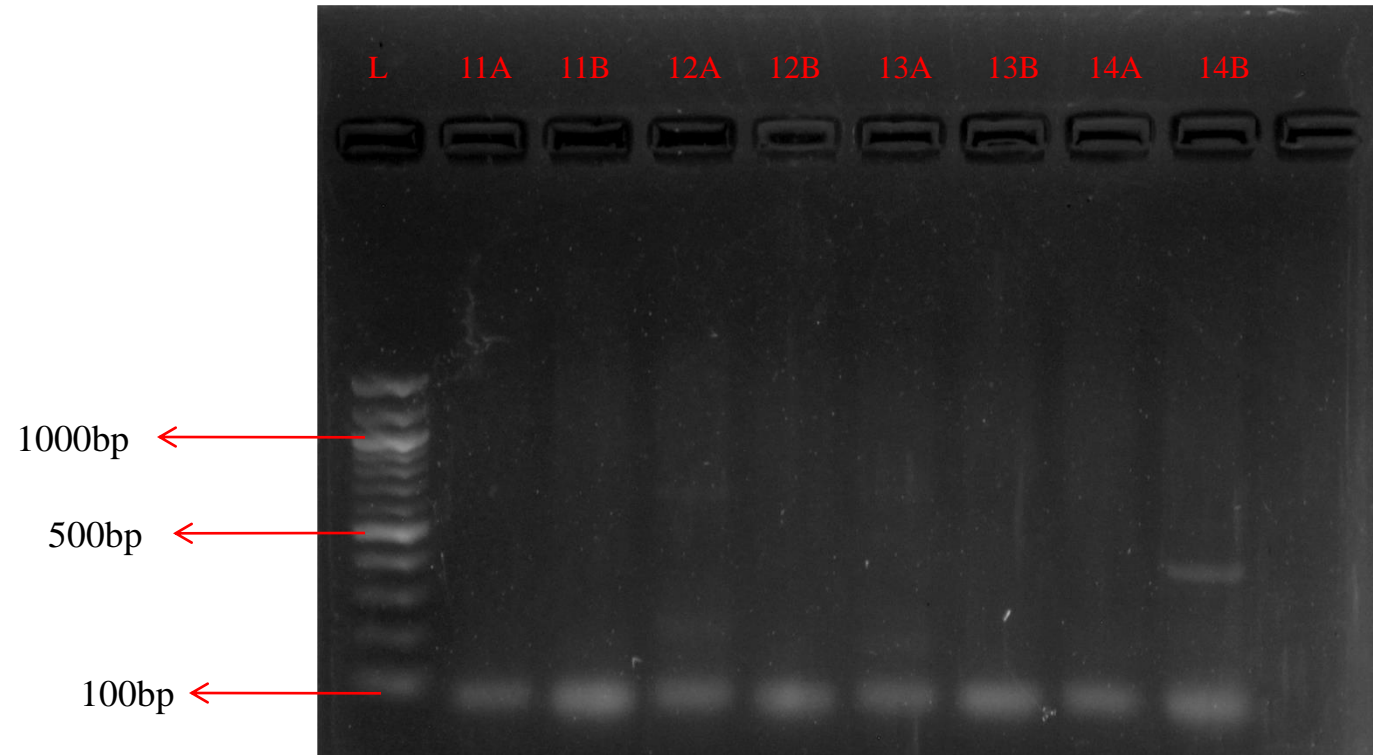
50 –OF1A (*vtx1*)

16 –SH100E (Human *estA*)

51 –FH11E (*ipaH*)

52 –FH12E

Figure S1d: Agarose gel electrophoresis image of multiplex PCR amplicon of DEC isolates. L: 100bp molecular ladder. Sample codes: 45-52



A. Human *estA* (StFh and StRh primers) – 151bp
vtx1 – 260bp
vtx2 – 420bp
ipaH – 647bp

B. Porcine *estA* (StFp and StRp primers) – 160bp
eae – 377bp
eltA – 479bp

11 – SH68E
 12 – SH65E (Human *estA* , *ipaH*)
 13 – SH61E
 14 – SH67E (*eae*)

Figure S1e: Agarose gel electrophoresis image of multiplex PCR amplicon of DEC isolates. L: 100bp molecular ladder. Sample codes: 1A-4B

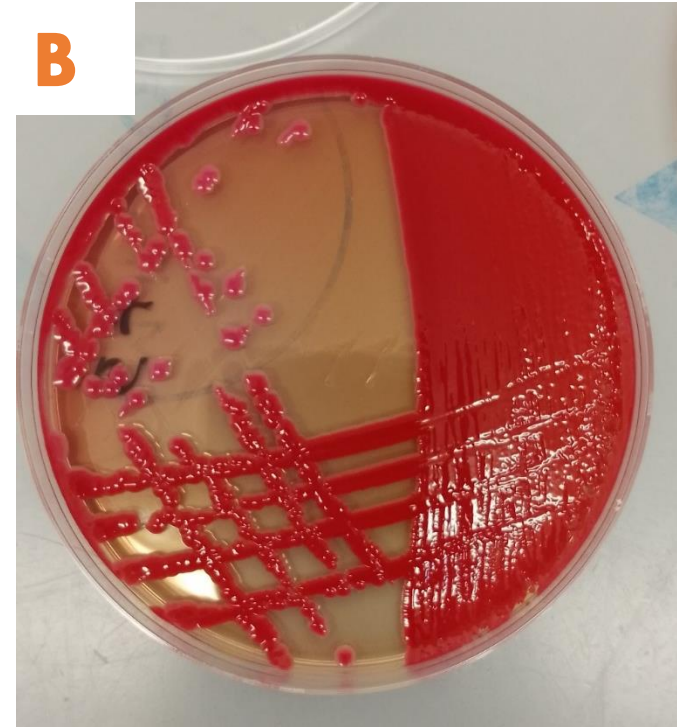


Figure S2: Growth of presumptive DEC colonies on Sorbitol MacConkey Agar (A-Sorbitol fermenter and B- Non Sorbitol fermenter)

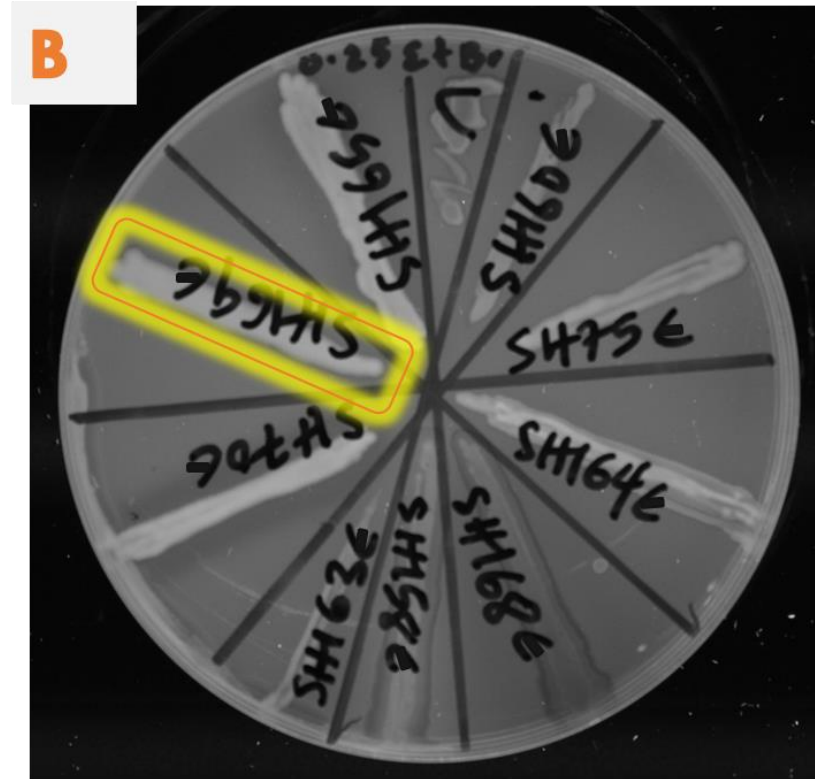
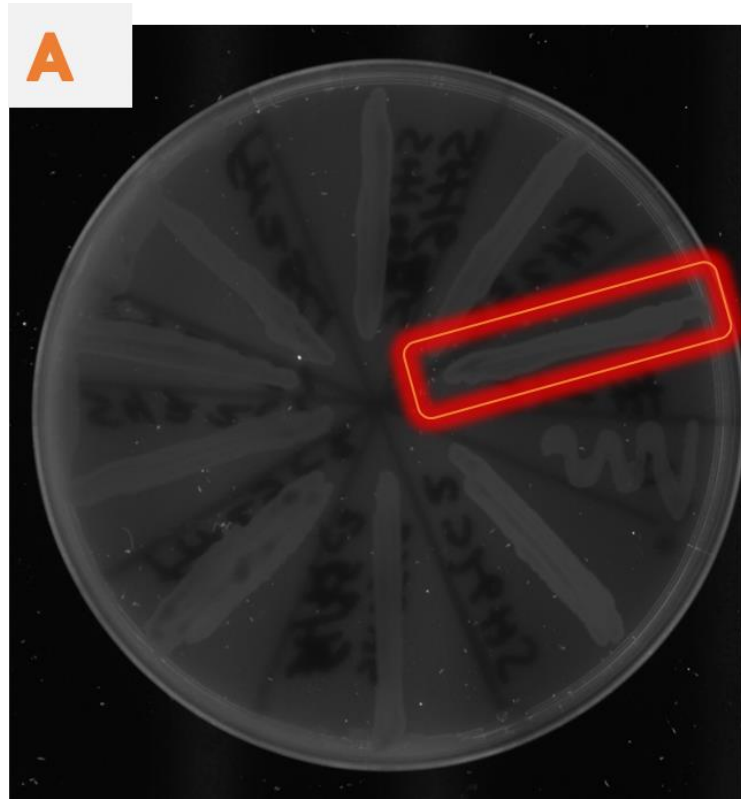


Figure S3: Over expression of efflux pump assay for multidrug resistant DEC isolates. A (Red box): over expression of efflux pump activity. B (Yellow box): No efflux pump activity