

Supplementary Material

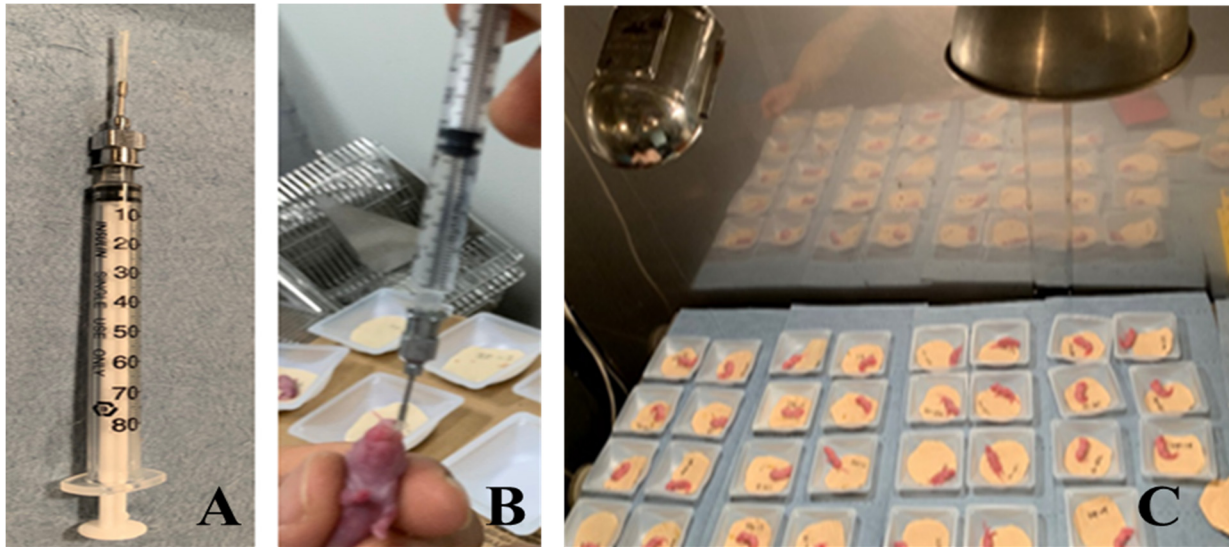


Figure S1. Administration of *Kudoa septempunctata* spores and observations in suckling mice. (A) A 1-mL syringe and needle capped with a polyethylene tube. (B) Spores were administered to suckling mice using a syringe. (C) Suckled mice were arrayed under two incandescent lamps. All suckling mice were handled throughout the experiment, received from a single delivery, stabilized for 1 h, administered with the spores, and observed for diarrhea in a walk-in-incubator maintained at 27 °C and 50% humidity.

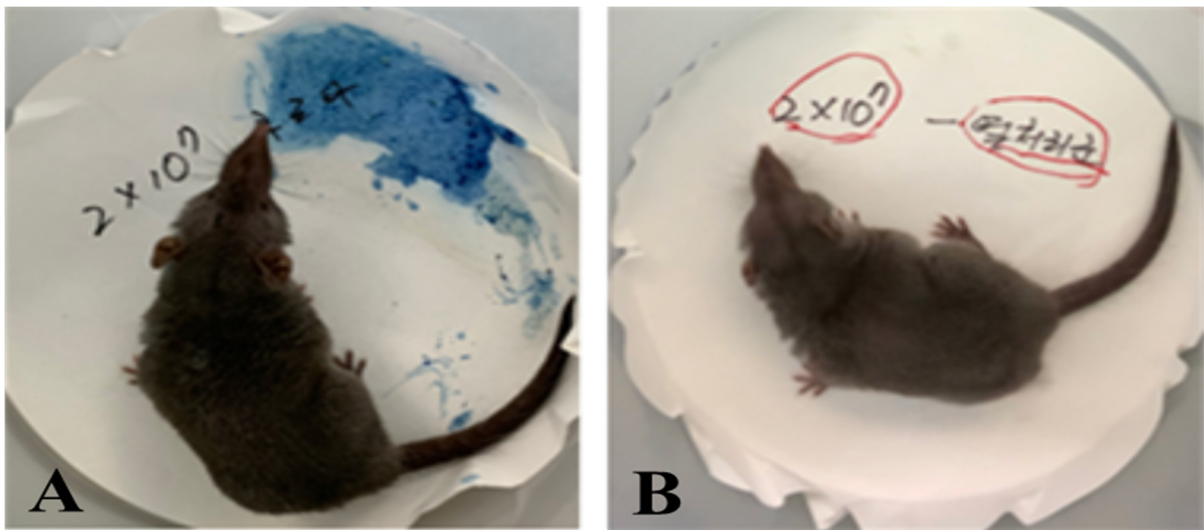


Figure S2. House musk shrews administered with 2×10^7 *Kudoa septempunctata* spores. (A) Vomitus from live spores administered to shrews. (B) Control shrew with heat-inactivated spores.